

GUERNSEY AIRPORT

METEOROLOGICAL OFFICE



CLIMATOLOGICAL REPORT

1998

£6:00

Guernsey Airport
Meteorological Office
Annual Report
1998

The Guernsey Meteorological Office has maintained a comprehensive record of the local weather since 1918 when the States took over the responsibility from a handful of dedicated enthusiasts. Proper daily statistics were kept as early as 1843 by a certain Dr. Hoskins, and it is a credit to his foresight that we are now able to look back, with some accuracy, through 154 years of Meteorological history.

In 1947, the Met. Office moved to the Airport, and now also forms part of a Global web of reporting stations that indulge in the continuous exchange of information that is so vital to Aviation.

This Annual Report has been designed to provide a snapshot view of Guernsey's climate over the last twelve months and contains a number of graphs which illustrate how this period compares to the 30 year average.

Additional Meteorological information is available, for a fee, by writing to:-

The Senior Meteorological Observer
Guernsey Airport
La Villiaze
Forest
Guernsey
GY8 0DS

Useful Telephone Numbers:-

Weather Forecast

Bailiwick - 8080
CI Shipping - 06969 8800

General Enquiries - 06969 1114

(All forecast information supplied by the Jersey Meteorological Department)

CONTENTS

COMMENTS ON THE WEATHER OF 1998	1
<u>MONTHLY COMMENTS:</u>	
JANUARY/FEBRUARY	2
MARCH	3
APRIL/MAY	4
JUNE	5
JULY	6
AUGUST/SEPTEMBER	7
OCTOBER	8
NOVEMBER	9
DECEMBER	10
<u>MONTHLY STATISTICS:</u>	
ANNUAL WEATHER SUMMARY	11
SUNSHINE/PRESSURE/RAINFALL	12
TEMPERATURE	13
NUMBER OF DAYS WITH	14
WIND SPEED	15
WIND SPEED, DIRECTION(PERCENTAGE FREQUENCIES)	16
FOG (visibility < 1000m)	17
RUNWAY VISUAL RANGE (< 600m)	18
REPORT FOR ROCQUAINE	19
<u>DAILY OBSERVATIONS FOR 1998:</u>	
JANUARY	20
FEBRUARY	21
MARCH	22
APRIL	23
MAY	24
JUNE	25
JULY	26
AUGUST	27
SEPTEMBER	28
OCTOBER	29
NOVEMBER	30
DECEMBER	31
<u>APPENDICES:</u>	
<u>GRAPHS</u>	
Monthly Sunshine / Sunless Days	I
Monthly Rainfall / Wetdays	II
Percentage Frequency of Wind Direction and Speed	III
Weekly Mean Temperature / Monthly Mean Air Pressure	IV
Monthly Hours of Fog / Surface Sea Water Temperatures	V
<u>SUPPLEMENTARY INFORMATION PAGES</u>	
Diary of Astronomical Events	VI
Lihou Island Access Times	VII
Ormering Tides	VIII

METEOROLOGICAL OFFICE GUERNSEY AIRPORT

COMMENT ON THE WEATHER OF 1998

A very stormy, but mild start to the year was followed by quieter and sunny conditions later in January, which ended up as the sunniest on record by more than 15 hours. The second half of January was also generally dry. This change of pattern led to a very mild, quiet and sunny February, which was more of an early Spring month, rather than late Winter. The mean temperature was the third highest on record, rainfall was the fourth lowest and sunshine the fifth highest. The Winter overall was the sunniest on record, reaching 300 hours for the first time and it was also very mild, although in recent years 1989, 1990 and 1995 have all had milder Winters. Before that, though, only 1975 was milder.

The mildness persisted through March, but it was, in contrast a dull month. Despite this lack of sun, rainfall was below average, with just 1.1mm in the middle two weeks. A noticeable change occurred towards Easter, with a cold northerly flow setting in, which produced our only snow of the year. Despite this cold snap April saw temperatures close to normal. Throughout the month pressure was low, resulting in the lowest mean pressure on record and the third lowest pressure for any month. This did not give the wettest April on record, this honour goes to 1966. Sunshine was, not surprisingly, well below normal. May redressed the balance, with warm weather arriving on the 8th and then persisting for much of the following two weeks. This warm spell meant that this was the third warmest May on record and it was also the second driest. The total of sunshine, while being well above normal, has been exceeded five times in the last 10 years. Thanks to the warmth of March and May, this was the fourth warmest Spring on record, although not quite as warm as in 1997. The very wet April meant that Spring was also wet.

June this year was similar to that for last year, with generally cloudy and wet conditions prevailing. Unlike 1997 we had a couple of very warm days, with the year's highest temperature of 28.2°C on the 20th. There was no real warmth during July and this ensured that this was the first month since January 1997 to have a mean temperature below average. This lack of warmth was accentuated by a dearth of sunshine, more than 50 hours less than usual, and the windiest July for eight years. The predominance of high pressure during August resulted in a very dry and sunny month, which along with light winds, made this by far the best of the Summer. Winds, though, were often from between west and north, so that temperatures were held close to normal. This Summer was the coolest for five years, but sunnier and drier than in 1997. The means for rainfall, temperature and sunshine were close to the 30 year averages, but were all worse than has been the case for much of the last 10 years.

Low pressure was dominant during the first half of September and towards the end, which resulted in a wet month. A warm, sunny and dry period occurred from the 18th to 24th. This helped to make this a rather warm month and raised the sunshine total close to average. During the earlier wet period it had also been windy, although without any gales. October's weather was very disturbed, there being only three days with no measurable rain. Rainfall was the highest and sunshine the lowest since 1982. The last 10 days of the month we particularly windy, including the first gale since January. Overall this was the windiest October since 1983. Early November was also unsettled and rather windy, then around mid-month conditions became quieter, but rather cold. This spell resulted in November being colder than usual, but to compensate it was a sunny month, whilst rainfall was below average. For the Autumn, sunshine and temperature were average, but rainfall was well above normal, making this the wettest Autumn for 16 years.

Cold weather in early December was more than balanced out by mild conditions after the first week, so that overall this was a mild month. It was, though, the wettest December for four years. Nearly two-thirds of this rain fell on four days, the 8th, 19th, 23rd and 26th. Much of the month was gloomy, with the second lowest December sunshine total on record.

After three near record warm months out of the first five, the rest of the year was disappointing. The mean temperature for the year was above the 30 year average for the seventh year in succession. Sunshine was slightly above normal, but if January and February are discounted, the rest of the year was rather dull. Rainfall was the highest for four years. Following January's early storms, most months were quieter than usual, so that whilst this year was windier than last year, it was still less windy than the long term average.

JANUARY

Some very disturbed stormy weather heralded the start of the New Year. A complex area of low pressure to the west of Scotland, early on the 1st, deepened through the day, with its fronts being pushed rapidly east towards the British Isles. Rain reached during the afternoon, becoming heavy in the evening. There was more heavy rain before dawn the next day as a wave depression passed by to the north. The rain soon gave way to showers, these becoming heavy in the late morning with hail accompanying some of the showers. It also got very windy with gales for several hours. During the following three days a series of deep lows crossed the United Kingdom from the south-west, bringing spells of very mild weather and rain, interspersed with heavy showers of rain or hail and passing brief thunderstorms. Despite all the rain there were also periods of sunshine.

A short-lived ridge crossed the area early on the 6th, but more fronts were soon moving through, giving further spells of rain. This turned out to be the first sunless day of the month, but it was again very mild. Showery conditions were back with us on the 7th, though, with hail and thunder once more. Winds also increased to gale force for a time in the early afternoon. The weather pattern then began to change as pressure rose over Spain and southern France. The air-flow backed, so that whilst another low crossed Britain bringing more rain, we just got some cloudy spells. The 9th turned out to be a pleasant winter's day, being very mild and sunny with a light or moderate breeze.

The southerly flow continued for another four days, but the sunny conditions did not persist. Mist spread north from France on the 10th, with cloud becoming low enough to give fog at the Airport for several hours, before clearing during the afternoon. The next day was cloudy after a clear night. The passage of a front early on the 12th brought a period of rain, with the cloud not clearing until the evening. Several hours of sunshine on the 13th helped to raise the temperature to its highest for the month, but a low was moving slowly north-east close to the Brest peninsula. As the low moved away towards the south coast of England early the following day winds increased to gale force for a while. The rest of the day had a mixture of sunny periods and showers, with a fall of hail around midday.

Unsettled weather then returned for several more days. Fronts crossed the area early on the 15th, followed by showery conditions. A transient ridge of high pressure moved through on the night of the 16th/17th, before fronts came in later to bring rain the next night. Over the following couple of days an area of low pressure transferred east across Britain, whilst a small high moved south-east towards Scotland. Northerly winds swept south through the British Isles, eventually reaching us on the evening of the 19th, introducing cold air for the first time this month. Very dry air on the 20th meant that it was sunny, but daytime temperatures were about 4°C lower than they been previously. Light winds and clear skies resulted in a sharp ground frost for a while overnight, before cloud spread down from the north-west to bring outbreaks of rain by daylight on the 21st. It was cold enough for some of the rain to be accompanied by ice pellets.

The weather became sunny by late morning on the 22nd, as we came more under the influence of a ridge of high pressure extending from an anticyclone over Russia. At the same time a low became slow moving near to western Ireland before sinking south during the following couple of days. Another anticyclone then started to drift east from just south of Iceland, intensifying as it did so. By the 24th the new high was the dominant feature, being centred near to northern Scotland, with a pressure of 1047mb. Weak fronts moved south into the Channel, giving outbreaks of showery rain. The wind was also strong at times by now, accentuating the cool nature of the weather. Winds blowing down from the North Sea, resulted in cloudy conditions the next day, with wintry showers developing for a while.

After a cloudy start to the 25th, the sun came out in the late morning and this marked the beginning of a very sunny end to the month. The last five days of January had virtually unbroken sunshine, with only a few small areas of cloud passing through at times. With an air-flow off France, though, it was rather cold and we continued to have a moderate to fresh breeze. The Airport escaped an air frost, but there were several ground frosts; more sheltered areas on the west of the island did see the temperature dip just below 0°C.

FEBRUARY

To begin with a cold easterly flow covered the Channel, which initially gave fair conditions on the 1st, but cloud spread down the Channel during the morning and we even managed some light showers. Both to the north and south of the Bailiwick skies remained clear, with Jersey, for instance, getting more than 8 hours of sunshine. For the following three days an area of slack pressure covered the islands, with mainly fair conditions. Clear periods overnight, though, resulted in sharp ground frosts, although the air temperature did not drop below 0°C. With much more sunshine than on the 1st, the next three days had higher maximum temperatures.

A very weak cold front came south on the 5th, to give us some light rain. By the morning of the 6th the whole of the British isles had south-west winds, blowing between low pressure near to Iceland and a high over the Alps. A cold front swept through early the next day, producing a short spell of heavy rain before skies cleared to allow mainly sunny and mild weather to arrive.

A new and deepening low then moved rapidly north-east over the Atlantic, towards Iceland, whilst a high built over western France. This situation allowed very mild air to sweep across most of the United Kingdom. Brittany and the Bailiwick had a light and moist southerly flow, which resulted in the formation of fog overnight on the near continent. This fog drifted north to keep the islands cold and dull on the 9th. After a fine, but misty night, the next day was cloudy and milder.

For the following five days pressure remained high over France and the western Mediterranean, with depressions moving north-east over the Atlantic. Light winds were maintained through the Channel, but a slightly drier flow allowed mainly fair conditions to develop. With the origin of the flow being the Sahara desert, and the sunny skies, it became very mild. The peak temperature at the Airport, of 14.6°C on the 14th, is the second highest recorded in February and the highest reached in the first half of the month.

A weak cold front cleared through early on the 16th, followed by mainly sunny and breezy conditions, but with temperatures slightly lower than the previous few days. An anticyclone moving east up the Channel the next day brought unbroken sunshine and it stayed very mild. A south-east wind on the 18th, though, dragged in cooler air from France and then troughs crossing the area overnight deposited a little rain.

The pressure subsequently started to fall, as the main anticyclone drifted further east to the Alps and a low pushed into western Ireland. A couple of days of unsettled weather followed, with rain late on the 20th and from mid to late morning the next day. Despite the rain, there was still some sunshine on both days, with mainly sunny conditions the day after. A new and intense high was drifting slowly north-east towards the Bay of Biscay. By the 24th a large anticyclone was centred over western Biscay, with a light north-west wind blowing across the area. This was a mainly sunny and mild day. The high was maintained for the next two days, whilst edging slowly eastwards. Slow moving areas of cloud ensured that amounts of sunshine were reduced.

A cold front, which had crossed most of the British Isles on the 26th, reached us on the morning of the 27th. With the arrival of this front it became windier and cooler. The end of the month was characterised by a fresh north-west wind and occasional showers.

MARCH

Unsettled weather prevailed through the first eight days of the month. Initially, the British isles were covered by a showery westerly flow on the southern flank of a complex area of low pressure, stretching from near southern Greenland, to the Western Isles of Scotland. We had a combination of sunny periods and showers, but with temperatures above normal. A series of warm fronts pushed north-east into Britain on the 2nd, making it cloudy and bringing rain late in the day. The next day was damp and dull, with outbreaks of rain through the day and some hill fog. Brighter conditions returned the following afternoon, but it was windy with a few showers. The showery weather persisted up to the evening of the 5th, before more cloud and rain spread in.

Fronts crossed southern Britain on the 6th, ensuring that we were cloudy with spells of rain or drizzle. The rain and drizzle cleared away the next morning, followed once more by sunny periods and showers. The 8th was cloudier again, with fronts moving down from the north, giving some heavy rain in the late morning. On the 9th, very dry air spread south-west over the area, behind a weak cold front. The relative humidity fell to 20%, whilst the visibility became exceptionally good. Despite a sunny afternoon, it was a rather cool day.

A frontal system crossed the British Isles on the 10th, followed by a strong northerly flow as the associated low moved out into the North sea. An intensifying anticyclone was drifting east over the Atlantic, but it stayed far enough away, for weak fronts to move south-east across the United Kingdom, to keep the weather cloudy. The anticyclone remained south-west of Britain from the 11th to the 18th, keeping the weather dry, but with a flow from the Atlantic it was cloudy most of the time.

The original high then became absorbed by a new high moving in from the west. This one was slightly further north and following the passage of a weak cold front early on the 19th, clear conditions arrived. The next day turned out to be the sunniest of the month, however, cloud spread south from England late in the day. Another two mainly cloudy, but dry, days followed, before sunny conditions came in from France on the 23rd. By this time, though, the general weather pattern was starting to change. The high, which had been dominant, began to move south-west as fronts pushed into Scotland. At the same time a decaying front approached from Europe, bringing increased cloud.

By the 25th, the whole of the British Isles were cloudy with outbreaks of rain. As mild and moist air came in, hill fog developed. The next two days were also dull, with hill fog at times, but it did turn mild. Winds became southerly on the 28th, bringing air north from Africa. A series of troughs in the flow, meant that there was virtually no sunshine, although a brief sunny spell in the late morning raised the temperature by 4°C, to reach the highest for the year so far. The southerly flow was maintained for the 29th, but it was again cloudy with rain at times and heavier bursts of rain in the evening. After drizzle and fog late the following morning, the sun eventually appeared. A transient ridge gave clear conditions overnight, which combined with light winds allowed fog patches to form. Sunny periods developed, though, for the month to end on a pleasant note.

APRIL

Frontal troughs, moving north-east through the area on the 1st, gave a mainly cloudy start to the month, although south-west winds meant that it was mild. Cloud, ahead of a deepening low over the Atlantic, spread in rapidly on the 2nd, bringing rain along by the evening with some heavy rain for a while. The low then slowed down as it approached south-west Ireland, taking three days to get as far as north-east England. After this it started to slip south towards the Channel, eventually being absorbed by a new low moving north-east over France. The associated weather was showery and windy at first, but there were good sunny periods between the showers. South-west winds also ensured that the temperatures were above normal. On the morning of the 3rd a waterspout was seen for several minutes over Rocquaine Bay, moving from near to Les Hanois towards Lihou island.

By the 8th a depression was approaching Scotland from the north-west, with air from the Arctic following in its wake. We still managed a mild, but showery day with over eight hours of sunshine. It became noticeably colder on the 9th, with the temperature failing to reach 10°C. Good Friday was dull, wet and cold, although we did not suffer as badly as much central England and Wales. The next day was similar, with low pressure remaining nearby. As the depression drifted east into the Continent it turned brighter, but stayed cold in the Arctic airflow. Easter Sunday was fairly sunny, however, during a couple of showers during the morning we had snow. Snow was seen again on the Monday, but it was sunnier.

Low pressure was still dominating the general weather pattern. By the 14th a low had moved south-east into the Bay of Biscay, before turning north-east towards Brittany. At the same time another low was edging west towards Scotland, whilst yet another was crossing Northern Ireland. This situation gave us rain, with some sleet for a while early on the 15th. Some other parts of Britain, though, had several hours of snow. After the depression which produced our rain moved off into the North Sea, a new development came in from the Atlantic. This gave continuous rain for most of the 16th, depositing 22mm of rain, which made this our second wettest April day on record. The minimum pressure read during the day was also a new April record. The rain persisted into the following day for about three hours, then it was cloudy with a few showers, before the sun came out in the afternoon. The wind was strong, which kept it feeling cold, although the temperature was slightly higher than had been experienced in the previous eight days.

The changeable weather persisted as lows and their associated fronts crossed the British Isles, bringing periods of rain and allowing us only small amounts of sunshine. Winds were now from the south or south-west, so that it became milder. On the 22nd a southerly airstream brought potentially warm air north from Spain, but the proximity of fronts gave a large amount of cloud, which held temperatures down. A brief burst of sun in the late morning pushed our temperature to its highest for the month, before dropping back several degrees as the cloud returned. On the 24th, the Airport was troubled by fog, with rain or drizzle at times despite the pressure being at its peak for the month. The passage of a cold front the next day allowed the sun to come out. This was followed by another three mainly sunny days, helped by showers not forming easily over the sea, whilst nearby France and southern England had passing thunderstorms.

Cloud returned for the last two days. Rainfall was limited this time, although low pressure was close by during the 29th.

MAY

Chilly weather early in the month was the product of a northerly flow blowing between low pressure over Germany and high pressure over the central Atlantic. Apart from the chilliness it was cloudy but mainly dry. A passing ridge helped to give us sunny weather on the 4th, the Spring bank Holiday. By the 5th the Atlantic high had slipped south, allowing fronts to move into western Britain. These fronts were very weak in our latitude, but a very moist airflow spread in late in the day. The next day was dull, with occasional light rain or drizzle. Improving conditions came along on the 7th as the flow backed, with the main area of high pressure over the Mediterranean and low pressure to the west and north of Scotland. It became warm the following day, but

troughs, moving north across Biscay, brought us increased cloud during the afternoon, although without any rain. A switch of wind direction to the west gave lower temperatures on Liberation Day, but it was mainly sunny and winds fell light in the afternoon.

The development of a depression off Portugal and a small anticyclone over the British Isles pulled the wind around to the east, bringing in warmer air again. The general situation was potentially thundery and we had large amounts of cloud on the 10th, however, there was only some light rain towards midnight with any thunder staying just off the west coast. The weather pattern was similar on the 11th, but for the next few days the pressure gradient was very slight. With the air being warm, this situation encouraged the development of sea breezes, which brought sea fog onshore at times on the 13th. By the 14th the main high was centred over southern Sweden, with a ridge across the United Kingdom. A very weak cold front was drifting westwards through the Low Countries, reaching us on the 15th, bringing little change of temperature, but introducing clearer conditions.

For most of the next week pressure was high over the British Isles, resulting in a north-east flow down the Channel. The associated weather was sunny and warm, especially away from any exposed coasts. Towards the end of this period the high drifted west, allowing a weak front to edge slowly south over Britain. The front finally reached here late on the 21st, marked by a band of cloud, but no rain. The 22nd was a noticeably cooler day than many in the previous two weeks, with a maximum at the Airport of 15.2°C compared to 19.1°C on the 21st. As it got closer to the late May Bank Holiday weekend, the high moved further west, with fronts more in evidence, although tending to affect the east of Britain rather than the Channel.

After the Bank Holiday the weather was less settled and cooler, with troughs of low pressure bringing thunderstorms to many parts of the British Isles, whereas we generally escaped. There was a thunderstorm on the 28th, but mostly it affected the west of the Island, with the eastern coast staying dry. By this time low pressure was centred over the Channel. The low then moved west as a new low pushed north-east across Biscay. As this approached an easterly breeze picked up, which dragged in some warm air again, although there were only a few glimpses of the sun through thick high cloud. To end with we had a sunny and reasonably warm day, with just one passing shower in the late afternoon.

JUNE

At the start of the month a complex area of low pressure extended from south-west Ireland to Portugal. During the 1st a low moved north-east across Biscay bringing rain after a bright start to the day. There was some heavy rain that night, followed by brighter conditions on the 2nd, but with showers in the afternoon. Further heavy showers came along early the next day and it remained cloudy until the afternoon. The area of low pressure was now moving away towards Scandinavia, allowing pressure to rise across the British Isles. After a sunny day on the 4th, Britain came under attack from more low pressure approaching from the south and west. The next couple of days were mainly cloudy, but the only rain came from showers late on the 6th. The passage of a cold front brought clearer weather the day after, but there were soon more fronts on the way.

Rain arrived on the 8th as an active warm front pushed in from the south-west. Hill fog developed in the evening as very moist air reached the Islands and the fog was again a problem at times on the 9th, accompanied by more heavy rain. The inclement nature of the weather was accentuated by a moderate to fresh breeze. The next day was better, with sunny periods and only a few light showers. As the low moved away into the Continent, a very cool northerly flow spread south through the British Isles. Around midday on the 11th a shower pushed the temperature down to just 9°C, with winds gusting to gale force briefly.

The unsettled pattern continued, with a transient ridge of high pressure followed by yet more fronts bringing heavy rain at about dawn on the 13th. Late in the day the fronts cleared, followed by a showery airstream. The 14th was a dry day and reasonably sunny, despite a depression moving very slowly north-east over England. Similar weather was experienced the next day and by that evening pressure was rising, as a developing anticyclone moved north-east over the Bay of Biscay. The 16th was the sunniest day of the month, but with temperatures slightly below normal. The proximity of high pressure the next day failed to stop weak fronts making it mainly cloudy and rather cool.

An anticyclone moved east into France on the 18th, whilst fronts pushed north-east over the United Kingdom, reaching southern Scotland by the end of the day. By now it had become warmer and going into the 19th the winds had backed to the south-east, bringing in very warm air from France. The wind remained south-east through the day and overnight, keeping it warm and it became hot the following day, after the clearance of early morning cloud. The pressure, though, had already fallen as a thundery low moved north over Biscay. The heat was short-lived, because the low continued its journey north, bringing the wind around to the west, with

hill fog coming in by the early hours of the 21st. The fog cleared readily in the morning to allow sunshine by midday, but it was more than 10°C cooler than the day before.

We managed to maintain mainly dry weather for another couple of days, but low pressure was still the dominant feature for much of the British Isles. This situation kept the wind coming in from the Atlantic, thus holding the temperature down to about normal. The first significant rain for more than 10 days arrived in the 24th as an active cold front crossed the area. This front was clear by the 25th, which was mainly sunny, and dry during daylight hours. The next day was cloudy for the most part, with some rain & drizzle, before heavy rain arrived in the late evening as a cold front moved slowly through the Islands. Over the following two days a depression edged slowly north over Scotland, maintaining showery conditions for the rest of Britain. Luckily for us most of the showers occurred over the larger land areas of England and nearby France.

To keep the unsettled nature of June's weather going, more fronts spread in by the 30th, bringing rain early on, followed by mist & fog before becoming sunny in the afternoon.

JULY

An anticyclone south of Iceland, and low pressure over Biscay and northern Spain, ensured that the 1st was a cloudy and rather cool day. The situation was similar on the 2nd, but with stronger winds. As the anticyclone drifted south a ridge of high pressure moved south through the British Isles, bringing mainly sunny conditions for the following couple of days. Temperatures, though, stayed below normal. The anticyclone continued to pull away further into the Atlantic, allowing fronts to push south-east over Britain. The weather then became mainly cloudy for the next three days, with some rain or drizzle and the increased moistness of the air meant that hill fog developed.

A short-lived ridge of high pressure gave sunny periods on the 8th, but more fronts were already pushing through western areas of the British Isles. From the 9th to the 12th a series of lows crossed the United Kingdom, with fronts never too far from the Islands, maintaining a very moist airflow. The resultant weather was cloudy, with a mixture of rain and drizzle for a good part of the time. The cloud was generally low, bringing spells of hill fog, which disrupted flying at times. To add to the misery winds were fresh to strong.

A cold front had cleared through by the early hours of the 13th, with a couple of mainly sunny days to follow. It remained breezy, though, with temperatures below normal. The changeable situation continued as yet more fronts came in from the Atlantic on the 15th. Rain arrived in the late evening, then in the early hours of the 16th the rain became heavy, accompanied by hill fog. The rain had eased off by first light, but drizzle and hill fog persisted into the afternoon. The sun came out for a couple of hours that evening, but further rain, drizzle and fog came in for a while early the next day. Sunny conditions followed in the afternoon.

Pressure rose slightly on the 18th as a small high drifted north-east over Biscay, but the proximity of a weak warm front meant that we had another cloudy morning, before it brightened up in the afternoon. The next depression to affect the British Isles moved north-east just to the west of Ireland, rather than across the country, so that its influence here was limited. The 19th was a mainly sunny day with south-east winds, allowing it to become warm for the first time this month. On the 20th thundery low pressure drifted north over western France. Whilst it was cloudy for a time in the afternoon, with a slight shower, we missed any of the thunderstorms that crossed the nearby Continent. The 21st was also mainly sunny, although the temperature fell back to just below average with the wind blowing in from the Atlantic once more.

Cloud had spread in from the south-west by mid-morning on the 22nd. Outbreaks of rain and drizzle came along soon after midday, with some heavier bursts in the evening and a few patches of hill fog. A brief heavy shower early on the 23rd was followed by mist, before the sun came out in the late morning. Pressure was now rising as an anticyclone edged slowly east towards the Channel. Despite this we did not have unbroken sunshine on the 24th, but it became fine in the afternoon. With the high over the area on the 25th winds were very light and it was generally sunny, but still not warm. The high declined quickly during the day, so that a frontal system was already close to south-west England by dawn on the 26th. There were a few spots of rain during the morning, before sunny spells developed in the afternoon.

The quiet conditions of the previous three days were replaced on the 27th by the moderate to fresh breezes that have been common this month. There were, though, good sunny periods with the temperature at a similar level to those of the previous three days. Having managed five days without any appreciable rainfall or fog, the 28th saw the arrival of rain early on and drizzle and fog before the end of the morning. It then dried up in the afternoon, but stayed cloudy. A small wave disturbance brought more rain, drizzle and hill fog the next morning, with sunny periods coming along in the afternoon, as winds swung around to the west.

The last couple of days were sunny on the whole, although temperatures remained depressed and winds were fresh to strong again.

AUGUST

On the 1st a northerly flow covered the British Isles, between high pressure over the Atlantic and low pressure over Scandinavia. Troughs moving south in the flow set off some heavy and thundery showers over England, whereas we had dry and reasonably sunny conditions, although with temperatures below normal. A ridge of high pressure toppled south-east through the area on the 2nd, to give a sunny day. Weakening fronts spread east the next day, making it cloudy by first light with some light rain during the morning. The evening and early part of the night saw damp conditions, with outbreaks of rain and drizzle and hill fog stopping the last flights of the day.

The passage of a cold front, in the early hours of the 4th, was followed by a developing anticyclone moving slowly north-east towards the Channel. The high then became the dominant feature of our weather for the next four days. This high brought mainly sunny weather with temperatures picking up, although winds remained west or north-west stopping any real heat from building up. By the 8th winds were north to north-east and this, combined with very high temperatures over nearby France and England, resulted in the formation of sea fog. A moderate north-east breeze the next day made it warmer here, especially in the sheltered south-west of the Island. Lighter winds on the 10th ensured that it was warmest away from coasts where sea breezes developed.

During the following couple of days it cooled down a few degrees, but stayed mainly sunny and dry. Fronts crossed northern Britain on the 13th, whilst we remained under the influence of high pressure, so it was sunny again. After another sunny day on the 14th, a weakening cold front approached the area, reaching us shortly after dawn the next day. We had about an hour of rain before the cloud began to disperse, allowing us sunshine once more. The pattern continued to repeat itself, with fronts moving east over Britain on the 16th, whilst we stayed sunny, followed by a weak cold front making a brief appearance late on the 17th.

Another ridge of high pressure brought more sun for the next two days. Once more a weakening cold front went through early on the 20th, followed by a transient ridge. The next frontal system crossed the British Isles on a more southerly track than previous ones, bringing strong winds, with rain and drizzle for the 21st. The cold front cleared through during the morning, to allow sunny spells, but the front did not get far away and returned the following morning to bring rain, drizzle and hill fog. By late afternoon the front had cleared away giving a fine end to the day.

The 23rd started off clear, but an approaching warm front soon brought cloud in, with some light rain or drizzle. That evening we had a spell of heavy rain and strong winds as the following cold front went through. A subsequent build of pressure then allowed us our first sunny day since the 19th. The ridge kept it sunny for another day, before a very weak front gave a spell of light rain. Pressure began rising once more on the 26th, but it was mainly cloudy. Overnight the cloud moved away to the south, leaving us with sunshine again on the 27th.

The general situation had now started to change, with an anticyclone drifting slowly east over Ireland. It then controlled the weather of the British Isles through most of the following Bank Holiday weekend. On the 28th and 29th the weather was sunny, with temperatures similar to those recorded during much of the previous couple of weeks. Winds blowing off France made the next day warmer, especially on the sheltered west of the Island, whilst Bank Holiday Monday was warm generally, but rather cloudy.

SEPTEMBER

After a foggy morning on the 1st, the clearance of a weak cold front allowed sunny and rather warm conditions during the afternoon. Thundery low pressure, moving north-east over France, then spread cloud in from the south bringing rain around dawn on the 2nd. The rain persisted through the day, becoming heavy in the evening and continuing for part of the night, to help make this the wettest September day since 1986. A transient ridge of high pressure gave mainly sunny conditions the next day, but more fronts were moving in from the Atlantic, to make the 4th another dull and damp day.

For the following six days the weather was dominated by low pressure. One depression arrived just off western Ireland early on the 6th, before almost grinding to a halt and filling slowly. Another one came in a couple of days later and these two then combined and moved slowly north-east across Scotland, eventually getting close to the coast of Norway on the 10th. We experienced a mixture of weather during this period, with sunshine at sometime on each day, but also spells of rain, or showers. It was generally breezy as well, with gusts near to gale force occasionally. As the winds were blowing from the south-west, though, daytime temperatures managed to reach normal or just above, whilst nights were rather warm.

By the 11th the airflow was from the north-west across the British Isles, bringing the coolest conditions of the month during this and the subsequent two days. We continued to get showers; one such during the latter part of the morning of the 12th was exceptionally heavy, accompanied by a brief thunderstorm and a small amount of hail. There were further showers on the next two days and winds remained fresh or strong, but it was also mainly sunny helping temperatures to rise somewhat.

A small low crossed Northern Ireland on the morning of the 15th, then passing over the Irish Sea and northern England during the rest of the day. We got some heavy rain as the warm front of the system went through, but it was dry after that, although staying cloudy. After this the weather began to change for the better. A ridge of high pressure started to extend north-east towards Britain, with an anticyclone forming over the Bay of Biscay by the 17th. Thereafter it drifted into the Continent and intensified, pulling the wind around to the south-east to give us warm and sunny conditions. Between the 18th and 23rd there was very little cloud around, with the sun keeping temperatures a few degrees above normal. A fresh east to north-east breeze sprung up on the 21st and 22nd, however, making those two days less warm than the ones around them.

A new shift in the weather pattern was already under way on the 23rd, but these changes were not evident in the Islands until the next day. There was still some warm sunshine, but thundery showers were pushing north over Brittany. These reached here during the evening, giving some parts of the Island rain heavy enough to cause short-lived flooding. On the 25th a depression moved into western Biscay, then continuing to move east it passed as close to us as the mouth of the Loire, before making its way to the Low Countries. With the low nearby our weather was mainly cloudy, with some rain and temperatures near normal. Once this low had moved away the remnants of ex-hurricane Karl came into the eastern Atlantic and helped in the re-invigoration of an old depression, which then edged into the Western Approaches early on the 30th. As it drifted closer to the Bailiwick we had some heavy showers, boosting the rainfall for the month.

OCTOBER

To start with a deep low was centred close to the Islands, ensuring we had some showers, but sunshine in the early afternoon helped to give us our highest temperature of the month. Overnight thundery showers came along, clearing away by the next morning to allow sunny spells. As the low moved away to the south-east, a north-east flow developed, bringing in much cooler air. By the 4th daytime temperatures were almost 6°C lower than three days earlier.

Pressure remained low through France and Spain and high over Scandinavia, for another three days. This kept us in a rather cool and showery regime, although the amount of rain was small and we managed sunny spells. By the 8th the high over Scandinavia had drifted down to the Ukraine, with low pressure over Germany and a second high over Ireland. This situation brought no improvement to our weather, with only a few glimpses of the sun and temperatures below average, accentuated by a fresh northerly breeze.

By now the weather pattern was beginning to shift, as a generally westerly flow started to push into the British Isles. The first set of fronts gave rain on the night of the 9th/10th, followed by sunny periods, which allowed it to become warmer again. The changeable nature of the weather, meant that another frontal system was soon on its way, bringing rain and drizzle the next night, which in turn were followed by sunny periods on the 11th. No fronts affected us on the 12th, although we still had a few showers.

For the 13th and 14th a moist south-west flow covered the Bailiwick, keeping it dull with outbreaks of rain and drizzle, as well as hill fog patches. Under these conditions the temperature was near normal during the day, but this was hardly noticeable due to the wind and rain. A fairly sunny day followed as a small anticyclone passed through the area. It was soon back to the more common type of weather, as more rain and drizzle came in early on the 16th. The clearance to brighter conditions arrived the next morning, but once more with some showers. A weak ridge that night made it rather chilly, however, this did help to give sunny periods in the morning, before a few showers spread in again.

After a couple of reasonably quiet days, winds began to pick on the 20th as low pressure renewed its hold on the weather for the British Isles. For the following three days the whole of Britain was swept by a strong south-west airstream, blowing around the southern flank of a very deep depression centred near Iceland. Fronts were never far away, so the we saw very little sunshine and there was rain of varying intensities for much of the time. As the air was coming to us from tropical regions, though, it was very mild for the latter half of October.

The most notable depression of the month began to form near Newfoundland early on the 23rd. A day later it was approaching Ireland, having deepened by 30mbs. Rain arrived before dawn on the 24th and continued through until the evening. Southerly winds increased close to gale force during the morning, which together with low cloud made flying very difficult. With the arrival of clearer air the wind swung around to the west and strengthened to a full gale.

The 25th had sunny periods and shower, whilst the wind eased down gradually. A showery regime then persisted until the evening of the 26th, before a warm front moved rapidly east across the United Kingdom. Pressure was high over northern Spain, at this time, which helped to make the front very weak here. Rain came in during the afternoon and the wind picked up near to gale force again. Dull conditions then held on until the early hours of the 29th, when a showery airstream took over. A heavy shower and brief thunderstorm just before dawn, were followed by a mainly sunny day. The 30th was also showery, before more wind and rain came in on the 31st to finish things off.

NOVEMBER

Following the passage of a front early on the 1st we managed a mainly sunny, but rather chilly day. The unsettled pattern of the weather, that had dominated conditions through October, was maintained for the early part of this month. This meant that a developing depression was soon making its presence felt, with fronts affecting us on the 2nd. The heaviest rain fell in the afternoon, before clearing up for the evening. The associated low then moved east across Wales and England, keeping showery weather going overnight and on the 3rd.

Over the next couple of days an anticyclone drifted south-east from the mid-Atlantic, towards north-west Spain, while a depression and its fronts crossed much of the British Isles. We received no rain from these fronts, although the weather became showery once the whole system had cleared through. The anticyclone then edged eastwards into western France, keeping fronts away from the Islands and by dawn on the 7th it was clear with a light southerly breeze. A deep and complex area of low pressure centred south of Iceland was soon pushing fronts into Ireland. The rain from these arrived in the Islands early the next day, introducing mild conditions as well. The mildest weather of the month actually occurred on the night of the 8th/9th, with the temperature peaking at 15.7°C in the early hours of the 9th, shortly before a burst of heavy rain which heralded the arrival of a cold front. South-west winds, though, kept it mild before a secondary cold front came through the next night, followed by cooler north-west winds.

A transient ridge of high pressure allowed mainly sunny conditions on the 10th, with a slight ground frost that night, then rain late the following day, brought in by a new frontal system. The weather at this stage was still unsettled, so that after a bright and showery day we had another dull and damp day. By the morning of the 14th a complex area of low pressure covered the British Isles, with frequent showers in the Islands, some accompanied by hail. As the area of low pressure edged away to the east the weather became more settled. For the next four days we had dry conditions, with plenty of sunshine, but it was rather cold.

The anticyclone, which had kept fronts away from us, finally declined enough by the 19th to allow weak fronts to get close and bring cloud and a few spots of rain. High pressure, though, was being maintained farther east over Europe and this ensured that rain bearing fronts ground to a halt at the mouth of the Channel. An airflow off France meant that temperatures were kept well below normal, with the 22nd the coldest day. The next day, whilst still cold, was mainly sunny and winds were light.

The weather pattern now began to change quickly as fronts made their way further south, to bring in rain before dawn on the 24th. Rain continued through the morning, turning to drizzle in the afternoon, before clearing away by the evening. The next day was brighter, but with some showers, followed in turn by cloudy conditions on the 26th, caused by a frontal system crossing the United Kingdom. Temperatures, though, climbed higher than they had been for more than two weeks and remained well above normal overnight. Outbreaks of rain and drizzle occurred for much of the 27th and the morning of the 28th. The sun then came out once a cold front had passed through and mainly fair conditions prevailed for the last couple of days of the month, but as the wind veered gradually to north then north-east it became colder again.

DECEMBER

A very intense anticyclone was centred over Russia on the 1st, with a ridge extending to a smaller high over Ireland. This situation produced an easterly flow across the Islands, ensuring a cold start to the month, but it was dry with a little sunshine. The easterly flow persisted for the next couple of days, with mainly cloudy conditions and by the 3rd it had cooled down enough to allow outbreaks of sleet at the Airport. By that evening, winds had backed towards the north, cutting off the supply of the coldest continental air. The following two days were still mainly cloudy, though, then conditions improved early on the 6th, with skies clearing to allow a ground frost. This turned out to be the sunniest and quietest day of the month, although it was still chilly.

A warm front came in from the Atlantic on the morning of the 7th, reaching us around midday. It gave some rain and introduced much milder air. Fronts remained close by on the 8th, resulting in wet weather most of the day. A clearance followed the next morning, with sunny intervals and the day ended clear. More fronts were soon on their way in from the west, re-introducing very moist air. These moist conditions stayed with us for most of the next three days, bringing periods of rain and drizzle and occasional fog patches. Any spells of clear weather managed to occur at night.

Mild but unsettled weather continued for another four days. Pressure, though, remained high to the south of us, restricting the affects of any fronts. Following the passage of a cold front early on the 18th, we had several hours of sunshine, before heavy showers arrived in the evening. There was more sunshine the next morning, then the approach of a deepening low brought rain by the evening. The low passed by over Brittany, with rain, heavy at times, persisting into the early hours of the 20th.

Once the low had moved out of the way, a northerly flow set in for a while. This introduced much colder weather, allowing a ground frost to develop early on the 21st, as a transient ridge passed through. After this brief interlude, fronts once again came in from the west. These gave mainly light rain on the 22nd, but then heavier rain on the 23rd. There was sunshine during the morning of Christmas Eve, before more rain & drizzle arrived in the late afternoon. Both Christmas Day and Boxing Day were mild and breezy, with periods of rain; the heaviest occurring on Boxing Day.

A spell of rain early on the 27th was followed by a showery regime, which continued through the 28th. There were a number of heavy showers, accompanied at times by hail. The last three days of the month were mainly dry, for a change, but sunshine was still in short supply. Temperatures, though, stayed well above normal.

ANNUAL WEATHER SUMMARY

MONTH	MEAN AIR TEMPERATURE °C		RAINFALL mm		SUNSHINE hrs	
	1998	DIFFERENCE FROM AVERAGE	1998	PERCENTAGE OF AVERAGE	1998	PERCENTAGE OF AVERAGE
JAN	7.2	+1.0	123.4	128.1	112.8	214.4
FEB	8.1	+2.2	15.0	18.9	117.1	148.0
MAR	8.8	+1.8	54.5	77.6	92.3	70.3
APR	8.9	+0.4	122.4	238.1	154.2	84.3
MAY	13.6	+2.4	6.7	13.2	275.1	117.6
JUN	14.7	+0.8	78.8	169.8	208.4	87.1
JUL	15.5	-0.4	43.8	117.4	199.1	79.3
AUG	16.5	+0.3	12.9	28.3	302.5	133.9
SEP	15.8	+0.8	115.8	180.7	164.5	97.7
OCT	12.7	+0.1	174.1	205.1	85.7	73.1
NOV	8.9	-0.4	62.3	61.0	106.1	148.0
DEC	8.3	+0.9	135.1	129.0	31.3	61.3
YEAR	11.6	+0.8	944.8	113.4	1849.1	102.5

SUNSHINE

MONTH	SUNSHINE (hours)						SUNNIEST DAY		% OF POSSIBLE SUN		SUNLESS DAYS	
	1998	AVERAGE 1961-90	RECORD HIGHEST	YEAR	RECORD LOWEST	YEAR	1998	DATE	1998	AVERAGE 1961-90	1998	AVERAGE 1961-90
JAN	112.8 *	52.6	97.2	1959	26.0	1966	8.5	30th	41.9	19.5	5	11.5
FEB	117.1	79.1	140.9	1959	36.1	1976	9.7	17th	39.8	26.9	4	7.5
MAR	92.3	131.3	206.1	1973	67.4	1964	10.8	20th	25.1	35.7	10	5.2
APR	154.2	182.9	280.4	1984	122.2	1981	13.3	27th	37.7	44.8	4	2.6
MAY	275.1	233.9	336.4	1989	136.9	1981	14.5	17th	58.2	49.5	2	1.8
JUN	208.4	239.3	355.3	1975	147.8	1977	13.4	16th	43.3	49.7	0	2.2
JUL	199.1	251.2	335.9	1959	167.7	1972	14.1	13th	41.1	51.8	3	1.3
AUG	302.5	225.9	323.0	1955	139.2	1992	14.3	5th	68.3	51.0	0	1.4
SEP	164.5	168.4	266.5	1959	104.5	1956	10.9	19th	43.7	44.7	2	2.6
OCT	85.7	117.2	176.4	1971	72.6	1968	7.4	19th	25.9	36.1	9	4.7
NOV	106.1	71.7	117.7	1988	38.9	1981	8.2	1st	39.1	26.4	5	6.9
DEC	31.3	51.1	98.5	1962	26.6	1966	5.8	6th	12.3	20.0	13	11.5
YEAR	1849.1	1804.5	2262.8	1959	1532.5	1981	14.5	17-May	41.5	40.5	57	59.0

ATMOSPHERE PRESSURE (Millibars) AT MEAN SEA LEVEL

MONTH	MEAN PRESSURE						EXTREME PRESSURE					
	1998	AVERAGE 1961-90	RECORD HIGHEST	YEAR	RECORD LOWEST	YEAR	RECORD HIGHEST	DATE & TIME G.M.T.	RECORD LOWEST	DATE & TIME G.M.T.	RECORD HIGHEST	DATE & TIME G.M.T.
JAN	1014.4	1016.2	1030.5	1992	1001.1	1948	1045.9	30/1989 0945	966.6	20/1965	1220	
FEB	1026.5	1015.6	1032.1	1959	1003.5	1966	1047.5	7/1964 1050	952.5	25/1989	1050	
MAR	1023.9	1016.1	1029.9	1953	1003.0	1947	1047.7	3/1990 0930	969.6	13/1951	1630	
APR	1002.6 *	1015.6	1025.1	1954	1008.2	1983	1040.2	10/1947 0800	981.0	4/1998	0050	
MAY	1017.3	1015.7	1025.3	1991	1007.8	1983	1036.1	22/1991 0900	993.5	17/1955	0850	
JUN	1015.7	1018.0	1024.5	1962	1009.5	1997	1037.5	14/1959 0850	988.9	9/1954	1500	
JUL	1015.7	1018.8	1023.5	1969	1013.9	1988	1034.5	12/1969 1150	986.6	3/1988	0845	
AUG	1020.8	1017.6	1022.0	1981	1011.9	1963	1036.1	12/1949 0930	982.3	9/1948	0000	
SEP	1010.2 *	1017.7	1024.2	1977	1010.9	1993	1037.3	22/1947 0700	974.7	13/1993	0630	
OCT	1014.8	1016.4	1024.5	1971	1003.9	1960	1040.0	26/1969 2200	959.5	16/1987	0200	
NOV	1019.6	1015.7	1026.2	1978	1003.0	1963	1040.5	30/1980 2345	965.0	19/1996	1720	
DEC	1019.9	1016.2	1029.5	1991	1000.6	1978	1046.0	25/1991 0950	964.2	8/1954	1450	
YEAR	1016.8	1016.6	1019.8	1949	1013.4	1960	1047.7	03/02/90 0930	952.5	25/02/89	1050	

RAINFALL

MONTH	RAINFALL mm						WETTEST DAY		RAIN DAYS (≥0.2mm)		WET DAYS (≥1.0mm)	
	1998	AVERAGE 1961-90	RECORD HIGHEST	YEAR	RECORD LOWEST	YEAR	1998	DATE	1998	AVERAGE 1961-90	1998	AVERAGE 1961-90
JAN	123.4	96.3	190.4	1988	15.4	1992	19.2	3rd	18	20.0	16	15.8
FEB	15.0	79.3	182.8	1978	4.8	1965	5.1	21st	8	15.9	5	12.3
MAR	54.5	70.2	160.2	1947	2.7	1961	12.1	25th	15	16.1	14	12.2
APR	122.4	51.4	130.4	1966	2.9	1980	22.0	16th	26 *	13.3	21 *	9.9
MAY	6.7	50.8	128.7	1994	4.1	1989	2.6	28th	7	12.4	3	9.4
JUN	78.8	46.4	129.7	1986	0.6	1976	20.7	26th	15	10.3	11	6.8
JUL	43.8	37.3	120.2	1960	6.6	1983	18.4	15th	12	9.6	10	6.5
AUG	12.9	45.6	122.0	1951	3.8	1955	5.9	23rd	8	11.1	4	7.6
SEP	115.8	64.1	194.5	1952	6.9	1997	29.2	2nd	18	13.1	13	9.6
OCT	174.1	84.9	233.9	1960	3.4	1978	33.1	24th	28	15.3	20	11.9
NOV	62.3	102.1	192.5	1965	16.1	1978	10.7	2nd	16	19.0	12	14.9
DEC	135.1	104.7	227.2	1965	28.1	1953	29.3	19th	21	19.1	17	15.4
YEAR	944.8	833.1	1317.0	1960	531.3	1989	33.1	24-Oct	192	175.1	146	132.0

* NEW RECORD

TEMPERATURE °C

MONTH	MEAN MAXIMUM		HIGHEST MAXIMUM				MEAN MINIMUM		LOWEST MINIMUM			
	1998	AVERAGE 1961-90	1998	DATE	RECORD HIGHEST	DATE	1998	AVERAGE 1961-90	1998	DATE	RECORD LOWEST	DATE
JAN	9.1	8.1	12.7	13th	13.3	4/1948	5.3	4.4	0.7	23rd	-7.8	20/1963
FEB	10.2	7.8	14.6	14th	15.0	29/1948	6.1	4.0	0.4	2nd	-7.2	21/48,7/91
MAR	10.8	9.2	15.4	28th	19.4	29/1965	6.7	4.7	3.4	1st	-2.2	10,11/1958
APR	11.2	11.0	16.0	22nd	23.0	22/1984	6.6	6.0	1.5	12th,13th	-1.4	11/1986
MAY	16.8	14.0	22.0	13th,14th	25.7	5/1995	10.3	8.4	4.9	4th	0.1	2/1979
JUN	17.3	16.8	28.2	20th	30.8	26/1976	12.1	10.9	8.5	4th	5.4	1/1975
JUL	17.7	18.9	21.8	19th	31.7	1/1952	13.3	12.9	11.5	4th,24th,26th	8.3	8/1954
AUG	19.6	19.0	26.5	10th	32.8	3/1990	13.4	13.4	10.9	6th	9.2	28/1986
SEP	18.0	17.5	21.5	1st	30.6	2/1961	13.7	12.5	9.6	13th	5.8	28/1974
OCT	14.7	14.7	17.9	1st	23.3	4,5/1959	10.7	10.5	7.1	29th	3.9	30/1983 {18/52,19/85 {22,28/93
NOV	10.7	11.2	15.7	9th	16.7	6/1955	7.1	7.4	2.8	23rd	0.0	
DEC	10.0	9.3	13.5	12th	15.6	6/1953	6.5	5.6	1.2	3rd	-3.8	24/1963
YEAR	13.9	13.1	28.2	20-Jun	32.8	03/08/90	9.3	8.4	0.4	02-Feb	-7.8	20/01/63

MONTH	MEAN DAILY AIR TEMPERATURE					MEAN DAILY RANGE				
	1998	AVERAGE 1961-90	RECORD HIGHEST	YEAR	RECORD LOWEST	YEAR	1998	AVERAGE 1961-90	RECORD HIGHEST	YEAR
JAN	7.2	6.2	8.6	1993	1.5	1963	3.8	3.7	4.7	1984
FEB	8.1	5.9	9.0	1990	1.5	1986	4.1	3.8	4.6	1988
MAR	8.8	7.0	10.3	1957	4.4	1962	4.1	4.5	6.4	1953
APR	8.9	8.5	10.9	1961	6.4	1986	4.6	5.0	6.3	1984
MAY	13.6	11.2	13.9	1989	9.9	1984	6.5	5.6	7.3	1989
JUN	14.7	13.9	16.7	1976	11.3	1972	5.2	5.8	8.3	1976
JUL	15.5	15.9	19.4	1983	13.8	1954	4.4	6.0	7.9	1983
AUG	16.5	16.2	19.1	1995	14.3	1956	6.2	5.6	7.3	1955
SEP	15.8	15.0	17.5	1949	12.8	1986	4.3	5.0	6.1	1961
OCT	12.7	12.6	14.7	1995	9.6	1974	4.0	4.2	5.1	1947
NOV	8.9	9.3	12.0	1994	7.7	1993	3.6	3.8	4.9	1969
DEC	8.3	7.4	10.1	1953	4.6	1950	3.5	3.7	4.5	1968
YEAR	11.6	10.8	12.1	1989	9.6	1963	4.6	4.7	5.2	1949,89,90

MONTH	LOWEST GRASS MINIMUM TEMPERATURE				DAYS WITH AIR FROST				DAYS WITH GRASS MINIMUM BELOW 0°C			
	1998	DATE	RECORD LOWEST	DATE	1998	AVERAGE 1961-90	RECORD HIGHEST	YEAR	1998	AVERAGE 1961-90	RECORD HIGHEST	YEAR
JAN	-6.9	21st	-10.0	29/1947	0	2.5	16	1963	7	7.4	20	1985
FEB	-7.2	4th	-11.1	12/1978	0	2.6	18	1986	8	7.8	24	1956
MAR	-2.0	31st	-9.4	3/1965	0	0.6	4	1947	6	7.0	18	1955
APR	-2.5	13th	-7.0	5/1990	0	0.1	1	1978,86	4	4.5	10	1984
MAY	-2.8	4th	-5.6	5/1979	0	0.0	—		1	2.0	9	1979
JUN	1.4	4th	-3.0	14/1987	0	0.0	—		0	0.3	3	1987,89
JUL	4.2	26th	1.0	Jul-96	0	0.0	—		0	0.0	—	
AUG	4.5	28th	0.8	11/1981	0	0.0	—		0	0.0	—	
SEP	6.5	4th	-1.0	23/1979	0	0.0	—		0	0.1	1	1979,86,87
OCT	0.8	18th	-4.0	30/1983	0	0.0	—		0	0.5	6	1992
NOV	-2.5	24th	-5.6	29/1987	0	0.0	—		5	3.3	9	1988
DEC	-6.0	6th	-8.9	29/1964,27/1995	0	1.0	5	1970	7	5.4	10	1976
YEAR	-7.2	04-Feb	-11.1	12/02/78	0	6.7	31	1963	38	38.4	62	1985

NUMBER OF DAYS WITH

MONTH	FOG					THUNDER				
	1998	AVERAGE 1961-90	RECORD HIGHEST	YEAR	RECORD LOWEST	YEAR	1998	AVERAGE 1961-90	RECORD HIGHEST	YEAR
JAN	2	5.8	13	1955,82	2	1963,67,72,74,92	4	0.7	4	1979
FEB	4	6.0	15	1979	0	1969	0	0.5	3	1957,89
MAR	6	7.2	16	1960,94	0	1968,73	0	0.4	4	1958,67,82,87,95
APR	3	6.4	16	1963	2	1976,90	1	0.4	4	1981,95
MAY	5	7.2	19	1964	2	1988	2	1.1	4	1950,71
JUN	7	10.2	18	1965	1	1975	0	1.2	6	1982
JUL	12	10.3	20	1972,78	4	1966	0	1.3	5	1982,94
AUG	9	8.8	21	1997	2	1976	0	1.2	5	1974
SEP	5	6.2	15	1987	0	1952,53,72	1	1.1	10	1976
OCT	5	3.9	17	1986	0	1971,73	3	1.3	5	1964
NOV	4	3.1	14	1992	0	-	0	0.9	4	1969
DEC	7	4.1	11	1995	0	1947,64,75	0	0.8	4	1976,93
YEAR	69	79.2	115	1994	55	1989	11	11.0	21	1982,95

MONTH	SNOW OR SLEET				HAIL					
	1998	AVERAGE 1961-90	RECORD HIGHEST	YEAR	1998	AVERAGE 1961-90	RECORD HIGHEST	YEAR	RECORD LOWEST	YEAR
JAN	2	3.4	12	1963,85	9	5.1	13	1984,85	0	1955,64,70,92,93
FEB	0	4.5	18	1956	0	3.4	13	1988	0	—
MAR	0	2.7	10	1962,70	1	3.7	9	1979	0	—
APR	4	0.8	4	1970	6	2.4	10	1994	0	—
MAY	0	0.1	3	1979	0	0.6	3	1955,82	0	—
JUN	0	0.0	—		0	0.1	1	1986,87	0	—
JUL	0	0.0	—		0	0.1	1	1971,87,94	0	—
AUG	0	0.0	—		0	0.2	1	—	0	—
SEP	0	0.0	—		1	0.4	2	1973,74,84	0	—
OCT	0	0.0	—		1	1.6	7	1992	0	—
NOV	0	0.7	5	1980	3	4.2	8	1979,85,87,91	0	1948,55,83,94,95
DEC	1	2.1	8	1962,70	3	3.9	10	1979,82,86,93	0	1964,68,75
YEAR	7	14.6	30	1962,63,70,79	24	25.7	50	1986	10	1964

MONTH	RAIN DAYS(≥0.2mm)					WET DAYS(≥1.0mm)				
	1998	RECORD HIGHEST	YEAR	RECORD LOWEST	YEAR	1998	RECORD HIGHEST	YEAR	RECORD LOWEST	YEAR
JAN	18	31	1948	4	1992	16	28	1948	3	1992
FEB	8	26	1970,95	2	1959	5	23	1951	1	1965
MAR	15	27	1979	3	1961	14	21	1947	1	1961
APR	26 *	21	1983	3	1976	21 *	18	1966	1	1976,80
MAY	7	26	1981	2	1989	3	19	1981	1	1989
JUN	15	21	1991	3	1975,76	11	14	1987,91	0	1976
JUL	12	20	1960	4	1954,69,79,83	10	15	1950	2	1969,93
AUG	8	21	1963	1	1976	4	18	1992	1	1955,76
SEP	18	23	1950,52	4	1959,97	13	21	1950	2	1959,97
OCT	28	28	1981	5	1965,78	20	24	1981	1	1978
NOV	16	27	1960	8	1978	12	25	1960	5	1988
DEC	21	28	1993	8	1991	17	26	1959	5	1991
YEAR	192	212	1960	138	1971	146	175	1960	96	1953

* NEW RECORD

WIND SPEED

MONTH	MEAN SPEED (KNOTS)		NUMBER OF DAYS OF GALES				HIGHEST GUST (KNOTS)			
	1998	AVERAGE 1961-90	1998	AVERAGE 1961-90	RECORD HIGHEST	YEAR	1998	DATE	RECORD HIGHEST	DATE
JAN	16.6	14.9	7	2.7	11	1984	66	3rd	77	25/1990
FEB	8.4	14.0	0	1.6	10	1990	35	28th	69	9/1988,11/1990
MAR	10.9	13.0	0	1.1	6	1980	47	5th	70	10/1982
APR	11.3	12.2	0	0.3	2	1964,72,83,94 (1954,55,58,62	44	16th	60	9/1994
MAY	9.5	11.3	0	0.1	1	(1962,72,79,96	29	30th	58	19/1996
JUN	11.5	10.5	0	0.0	0	-	36	11th	51	16/1965
JUL	11.8	10.3	0	0.0	1	1956,69	34	11th,12th	63	31/1983
AUG	8.7	10.3	0	0.1	1	1956,61,86	37	21st	52	26/1986
SEP	12.4	11.3	0	0.3	2	1953,65,74,83	43	13th	60	29/1962
OCT	14.7	12.5	1	0.8	4	1967,76	56	24th	81	16/1987
NOV	12.8	14.1	0	1.7	8	1977	52	3rd	73	23/1984
DEC	12.6	14.9	0	2.3	9	1979	48	26th	83	15/1979
YEAR	11.8	12.4	8	11.1	20	1972	66	03-Jan	83	15/12/79

PERCENTAGE FREQUENCIES OF HOURLY MEAN WIND SPEED AND DIRECTION

MONTH	DIRECTION RANGE	350 -010	020 -040	050 -070	080 -100	110 -130	140 -160	170 -190	200 -220	230 -250	260 -280	290 -310	320 -340	SPEED ONLY
	SPEED RANGE													
JAN	0-3 knots	-	-	-	-	-	-	-	-	-	-	-	-	1.3
	4-10 knots	0.9	-	0.3	1.1	0.5	4.8	3.6	0.5	0.9	0.3	0.1	0.3	13.4
	11-21 knots	1.9	3.4	8.6	14.5	2.3	7.5	4.4	12.6	4.2	1.7	3.0	0.8	64.9
	22-33 knots	-	0.3	2.0	-	-	0.7	1.2	3.0	4.6	5.2	1.9	-	18.8
	≥34 knots	-	-	-	-	-	-	-	-	0.7	0.8	-	-	1.5
	DIRECTION ONLY	2.8	3.6	10.9	15.6	2.8	13.0	9.3	16.1	10.3	8.1	5.0	1.1	-
FEB	0-3 knots	-	-	-	-	-	-	-	-	-	-	-	-	10.1
	4-10 knots	0.6	5.8	3.7	1.5	2.2	15.6	10.0	9.4	4.3	1.6	5.7	3.3	63.7
	11-21 knots	-	-	0.9	0.1	0.1	2.1	3.4	3.6	3.9	4.3	5.8	1.8	26.0
	22-33 knots	-	-	-	-	-	-	-	-	0.1	-	-	-	0.1
	≥34 knots	-	-	-	-	-	-	-	-	-	-	-	-	-
	DIRECTION ONLY	0.6	5.8	4.6	1.6	2.4	17.7	13.4	12.9	8.3	6.0	11.5	5.1	-
MAR	0-3 knots	-	-	-	-	-	-	-	-	-	-	-	-	5.9
	4-10 knots	4.8	5.1	5.8	1.6	3.6	3.9	2.4	2.3	1.1	3.2	4.7	9.9	48.5
	11-21 knots	0.8	0.4	3.5	2.2	1.6	0.7	3.4	11.4	9.3	3.8	1.3	1.9	40.2
	22-33 knots	-	-	-	-	-	-	0.3	1.7	1.1	0.8	0.4	1.1	5.4
	≥34 knots	-	-	-	-	-	-	-	-	-	-	-	-	-
	DIRECTION ONLY	5.6	5.5	9.3	3.8	5.2	4.6	6.0	15.5	11.4	7.8	6.5	12.9	-
APR	0-3 knots	-	-	-	-	-	-	-	-	-	-	-	-	3.3
	4-10 knots	1.7	1.4	1.5	0.8	2.1	6.5	6.1	8.3	5.7	4.7	3.5	4.3	46.7
	11-21 knots	5.8	2.1	0.6	0.8	2.1	2.5	2.6	11.8	9.3	2.4	2.5	3.6	46.1
	22-33 knots	0.8	0.3	0.4	-	-	-	0.3	0.7	0.4	-	-	1.0	3.9
	≥34 knots	-	-	-	-	-	-	-	-	-	-	-	-	-
	DIRECTION ONLY	8.3	3.8	2.5	1.7	4.2	9.0	9.0	20.8	15.4	7.1	6.0	8.9	-
MAY	0-3 knots	-	-	-	-	-	-	-	-	-	-	-	-	3.1
	4-10 knots	10.8	15.1	5.5	2.7	2.7	3.5	1.9	1.6	2.0	3.0	5.5	6.7	60.9
	11-21 knots	0.9	9.5	10.8	1.1	0.1	1.3	0.9	2.2	5.5	2.6	0.9	0.1	36.0
	22-33 knots	-	-	-	-	-	-	-	-	-	-	-	-	-
	≥34 knots	-	-	-	-	-	-	-	-	-	-	-	-	-
	DIRECTION ONLY	11.7	24.6	16.3	3.8	2.8	4.8	2.8	3.8	7.5	5.5	6.5	6.9	-
JUN	0-3 knots	-	-	-	-	-	-	-	-	-	-	-	-	1.4
	4-10 knots	-	0.3	0.7	2.2	2.9	2.8	4.0	9.0	6.8	4.4	3.2	0.3	36.7
	11-21 knots	-	0.3	1.9	1.5	2.2	1.0	2.4	11.8	23.6	9.9	4.7	2.1	61.4
	22-33 knots	-	-	-	-	-	-	-	-	-	-	0.6	-	0.6
	≥34 knots	-	-	-	-	-	-	-	-	-	-	-	-	-
	DIRECTION ONLY	-	0.6	2.6	3.8	5.1	3.8	6.4	20.8	30.4	14.3	8.5	2.4	-
JUL	0-3 knots	-	-	-	-	-	-	-	-	-	-	-	-	3.0
	4-10 knots	3.0	0.7	0.9	-	0.9	3.0	3.5	4.4	2.2	4.7	5.2	6.9	35.3
	11-21 knots	-	2.6	4.0	-	-	0.8	0.3	4.0	18.7	27.4	2.3	0.8	60.9
	22-33 knots	-	0.3	0.1	-	-	-	-	-	0.4	-	-	-	0.8
	≥34 knots	-	-	-	-	-	-	-	-	-	-	-	-	-
	DIRECTION ONLY	3.0	3.5	5.1	-	0.9	3.8	3.8	8.5	21.2	32.1	7.5	7.7	-
AUG	0-3 knots	-	-	-	-	-	-	-	-	-	-	-	-	5.5
	4-10 knots	6.6	5.2	2.8	0.7	3.1	1.7	0.7	2.4	5.4	7.5	12.1	17.9	66.1
	11-21 knots	0.3	1.5	1.3	0.5	1.7	-	-	1.3	5.1	8.3	4.7	2.4	27.3
	22-33 knots	-	-	-	-	-	-	-	-	0.9	0.1	-	-	1.1
	≥34 knots	-	-	-	-	-	-	-	-	-	-	-	-	-
	DIRECTION ONLY	6.9	6.7	4.2	1.2	4.8	1.7	0.7	3.8	11.4	16.0	16.8	20.3	-
SEP	0-3 knots	-	-	-	-	-	-	-	-	-	-	-	-	3.9
	4-10 knots	1.0	1.7	1.4	5.8	6.1	5.1	1.7	2.2	1.8	2.4	3.8	0.7	33.6
	11-21 knots	0.1	-	8.3	1.4	2.2	3.1	3.9	7.2	8.1	11.0	11.0	3.9	60.1
	22-33 knots	-	-	-	-	-	-	0.3	0.6	-	0.3	1.1	0.1	2.4
	≥34 knots	-	-	-	-	-	-	-	-	-	-	-	-	-
	DIRECTION ONLY	1.1	1.7	9.7	7.2	8.3	8.2	5.9	10.0	9.8	13.7	15.8	4.7	-
OCT	0-3 knots	-	-	-	-	-	-	-	-	-	-	-	-	3.9
	4-10 knots	3.2	7.0	2.4	0.5	1.3	1.1	0.7	0.4	1.7	1.9	4.8	2.2	27.3
	11-21 knots	5.4	2.3	1.7	0.3	0.3	0.3	1.2	13.0	9.1	6.2	10.1	1.3	51.2
	22-33 knots	-	-	-	-	-	-	0.7	1.3	6.3	7.7	1.1	-	17.1
	≥34 knots	-	-	-	-	-	-	-	-	0.1	0.4	-	-	0.5
	DIRECTION ONLY	8.6	9.3	4.2	0.8	1.6	1.3	2.6	14.8	17.3	16.1	16.0	3.5	-
NOV	0-3 knots	-	-	-	-	-	-	-	-	-	-	-	-	2.6
	4-10 knots	1.4	0.6	0.1	0.6	2.9	9.2	4.2	1.5	1.9	2.2	1.8	2.4	28.8
	11-21 knots	3.9	2.2	-	-	0.1	9.6	6.4	4.6	4.3	7.9	10.7	12.6	62.4
	22-33 knots	-	-	-	-	-	0.1	0.1	-	0.8	3.6	1.5	-	6.2
	≥34 knots	-	-	-	-	-	-	-	-	-	-	-	-	-
	DIRECTION ONLY	5.3	2.8	0.1	0.6	3.0	18.9	10.7	6.1	7.1	13.8	14.0	15.0	-
DEC	0-3 knots	-	-	-	-	-	-	-	-	-	-	-	-	4.2
	4-10 knots	3.1	0.1	0.1	0.8	1.5	1.6	5.0	6.3	3.6	1.5	2.8	2.6	29.0
	11-21 knots	1.6	3.8	3.2	0.5	0.1	8.6	9.1	19.1	7.3	4.8	2.2	1.6	62.0
	22-33 knots	-	0.7	0.3	-	-	-	0.1	1.2	1.3	0.4	0.8	-	4.8
	≥34 knots	-	-	-	-	-	-	-	-	-	-	-	-	-
	DIRECTION ONLY	4.7	4.6	3.6	1.3	1.6	10.2	14.2	26.6	12.2	6.7	5.8	4.2	-
YEAR	0-3 knots	-	-	-	-	-	-	-	-	-	-	-	-	4.0
	4-10 knots	3.1	3.6	2.1	1.5	2.5	4.8	3.6	4.0	3.1	3.1	4.4	4.8	40.7
	11-21 knots	1.7	2.4	3.8	1.9	1.1	3.1	3.2	8.6	9.0	7.5	4.9	2.7	50.0
	22-33 knots	0.1	0.1	0.2	-	-	0.1	0.3	0.7	1.4	1.5	0.6	0.2	5.2
	≥34 knots	-	-	-	-	-	-	-	-	0.1	0.1	-	-	0.2
	DIRECTION ONLY	4.9	6.1	6.1	3.5	3.6	8.0	7.0	13.3	13.6	12.3	10.0	7.7	-

GUERNSEY AIRPORT MET OFFICE 1998**Days and Number of Hours with FOG (Vis <1000m) During Flying Hours**0520-2120 Local Time**1998**

DATE	JAN	FEB	MAR	APR	MAY	JUN	JUL	AUG	SEP	OCT	NOV	DEC	
1				0.5					5.0				
2													
3			0.5					4.0					
4													
5													
6					0.5				0.5				
7							2.5						
8						1.5		0.5			3.0		
9		15.0			0.5	6.0	8.5						
10	5.0						2.5					1.5	
11		1.0					2.0	2.5					
12							5.5					4.0	
13					0.5	1.0				3.0			
14										3.5			
15					2.5			0.5	0.5			1.5	
16							6.5			1.0		0.5	
17							1.5						
18													
19				1.5									
20													
21						0.5				2.5			
22							1.5	3.0					
23													
24				5.0						0.5	0.5	0.5	
25			5.0										
26			4.5										
27			3.5								0.5		
28							5.5				1.0		
29							3.5						
30			3.5			5.0							
31			2.0										
Tot. Hrs	5.0	16.0	19.0	7.0	4.0	14.0	39.5	10.5	6.0	10.5	5.0	8.0	144.5
Tot. Days	1	2	6	3	4	5	10	5	3	5	4	5	53

10 Year Period Average (1988-1997)

Hours	21.6	23.4	32.0	25.3	16.7	21.0	32.0	22.7	9.1	3.6	13.5	13.2	233.9
Days	5.2	5.9	7.7	6.5	4.9	6.8	9.1	8.2	3.3	2.2	3.6	4.0	67.4

GUERNSEY AIRPORT MET OFFICE 1998**Days and Number of Hours with Runway Visual Range <600m During Flying Hours**0520-2120 Local Time**1998**

DATE	JAN	FEB	MAR	APR	MAY	JUN	JUL	AUG	SEP	OCT	NOV	DEC	
1									3.0				
2													
3								2.0					
4													
5													
6													
7							1.5						
8						1.0					2.5		
9		10.5				3.5	7.5						
10	1.5						1.5						
11		0.5						1.5					
12							1.0					1.0	
13						0.5							
14													
15					2.0								
16							2.0			0.5		0.5	
17							1.5						
18													
19													
20													
21										0.5			
22							0.5	1.0					
23													
24				5.0									
25													
26			2.5										
27			3.5				3.0						
28							1.5						
29													
30			2.0			4.0							
31			0.5										
Tot.Hrs	1.5	11.0	8.5	5.0	2.0	9.0	20.0	4.5	3.0	1.0	2.5	1.5	69.5
Tot.Days	1	2	4	1	1	4	9	3	1	2	1	2	31

10 Year Period Average (1988-1997)

Hours	9.9	10.5	16.0	12.5	7.6	9.4	15.1	7.9	3.0	1.2	4.9	5.7	103.5
Days	2.5	2.9	4.4	4.0	2.9	3.6	5.5	5.1	1.5	0.7	1.9	1.7	36.7

REPORT FOR ROCQUAINE

MONTH	TEMPERATURE °C						RAINFALL mm			MEAN RH% AT 9 a.m.	CLOUD OKTAS AT 9a.m.
	MEAN MAXIMUM	HIGHEST MAXIMUM	DATE	MEAN MINIMUM	LOWEST MINIMUM	DATE	1998	WETTEST DAY	DATE		
JAN	10.0	13.5	13th	5.8	-0.8	28th	114.3	20.7	4th	79.6	5.3
FEB	11.3	15.2	14th	6.5	0.4	2nd	15.7	6.9	21st	82.6	5.5
MAR	12.2	17.2	28th	7.6	3.5	23rd	49.3	10.6	3rd	79.6	6.7
APR	12.6	17.0	22nd	7.4	1.8	13th	118.0	24.1	16th	79.0	5.8
MAY	18.1	23.1	8th	10.5	5.6	4th	10.9	7.7	28th	75.7	4.6
JUN	18.4	30.2	20th	12.8	9.4	4th	71.0	17.7	26th	82.6	6.0
JUL	18.8	23.2	19th	14.0	10.8	26th	35.9	15.0	15th	85.6	6.0
AUG	20.4	25.5	9th	14.2	11.7	27th	10.3	4.8	23rd	80.6	4.1
SEP	19.0	23.0	20th	14.3	11.0	13th	107.1	30.1	2nd	84.3	5.0
OCT	15.6	19.3	1st	11.7	7.5	18th	136.5	22.9	24th	82.7	6.6
NOV	11.4	16.3	8th	8.0	2.2	23rd	48.0	9.2	24th	74.6	5.4
DEC	11.0	14.2	12th	7.1	2.3	4th	123.4	30.3	19th	83.9	6.4
YEAR	14.9	30.2	20-Jun	10.0	-0.8	28-Jan	840.4	30.3	19-Dec	80.9	5.6

METEOROLOGICAL OBSERVATIONS GUERNSEY AIRPORT. JANUARY 1998

DAY	DATE	BAROMETER	TEMPERATURE deg C						WIND				RAIN	SUN	WEATHER			
		mb	AIR			GRASS	SOIL		DIR'N	SPEED(knots)			mm	hrs				
		at 9a.m.	MAX	MIN	MEAN	MIN	30cm	100cm	9a.m.	9a.m.	MEAN	MAX						
THU	1	1010.8	11.6	5.0	8.3	-2.2	8.1	<u>9.5</u>	210	16	19.4	51	17.4	2.9	Shwrs bec fine. Cloudy late am. Gradu rain pm, hvy rain evng			
FRI	2	<u>982.3</u>	11.4	6.5	9.0	6.0	8.3	9.3	270	<u>32</u>	25.3	58	7.2	3.1	Rain ocnl hvy mid am. Hvy shwrs late am. Gales, hail. Ocnl fair			
SAT	3	990.4	12.2	4.5	8.4	7.2	8.6	9.4	230	<u>28</u>	26.2	<u>66</u>	<u>19.2</u>	2.7	Rain & drzl am. Fog patch early. Gales late am. Rain, hail pm. TS			
SUN	4	995.0	10.4	5.3	7.9	1.8	8.2	9.3	230	22	<u>27.0</u>	60	18.6	1.2	Shwrs early, tempo rain. Hvy shwrs, hail & TS. Gales pm			
MON	5	995.5	9.8	5.1	7.5	4.0	7.6	9.4	220	22	<u>27.0</u>	55	8.0	1.8	Shwrs. TS & rain mid am. Very hvy shwr. Gales late am. Hail			
TUE	6	1008.8	12.0	6.9	9.5	3.9	7.4	9.3	160	13	13.4	33	4.9	NIL	Ocnl rain & drzl am. Hvy rain early pm. Ocnl rain later			
WED	7	1007.2	11.2	7.1	9.2	6.1	8.4	9.1	230	18	20.4	53	10.8	2.6	Cloudy, ocnl fair. Hvy shwrs. Hail. Gale early pm. Ocnl TS pm			
THU	8	1017.7	12.4	9.6	11.0	7.1	8.3	9.2	200	18	16.6	32	TR	2.9	Fair bec ocnl cloudy. Cloudy late pm			
FRI	9	1024.8	12.3	<u>10.6</u>	<u>11.5</u>	8.0	8.8	9.1	160	11	10.7	21	NIL	7.3	Cloudy bec fine, dew. Fair late pm			
SAT	10	1021.8	10.7	8.3	9.5	6.7	8.7	9.3	160	11	12.0	24	NIL	1.2	Fair or fine , dew. Mist mid am, bec fog. Thick fog midday bec fine			
SUN	11	1013.4	11.2	9.2	10.2	7.0	8.7	9.3	160	14	12.5	24	1.3	NIL	Fair, haze & dew bec cloudy. Mist early pm. Fair evng			
MON	12	1012.7	11.0	10.0	10.5	9.0	9.0	9.3	150	<u>08</u>	9.4	22	3.7	NIL	Mist early. Slt rain am. Cloudy bec fair evng, dew			
TUE	13	995.3	<u>12.7</u>	9.7	11.2	7.4	<u>9.2</u>	9.3	150	13	18.8	44	2.4	3.6	Cloudy gradu rain. Fine late am bec cloudy pm, rain			
WED	14	1009.7	10.4	7.1	8.8	5.2	<u>9.2</u>	9.4	290	20	20.3	48	5.0	4.5	Slt rain early, gale. Fair by mid am. Shwrs, hail late am. Rain late p			
THU	15	1011.5	12.0	8.8	10.4	6.3	8.7	9.4	230	13	14.9	33	5.7	1.8	Rain early, bec ocnl fair from mid am. Shwr pm			
FRI	16	1009.8	10.4	7.6	9.0	6.2	8.9	9.4	300	18	16.0	31	NIL	5.5	Ocnl heavy shwrs early, bec fair then mainly fine p.m.			
SAT	17	1026.5	10.2	5.7	8.0	0.0	8.3	9.4	210	13	12.0	31	10.3	2.7	Fine bec fair then cloudy. Rain late evng, tempo mod rain			
SUN	18	997.7	10.6	6.3	8.5	5.9	8.5	9.3	260	25	24.3	54	3.9	2.0	Rain & drzl early. Hvy rain mid a.m. bec shwrs. Gale, hail			
MON	19	1003.9	10.6	4.3	7.5	4.6	8.2	9.3	290	20	18.1	38	0.1	3.9	Cloudy ocnl fair. Slt shwrs early & p.m. Fair or fine late evng			
TUE	20	1029.8	6.4	3.0	4.7	0.4	7.5	9.1	360	10	<u>7.5</u>	24	0.3	8.0	Fair bec fine. Dry air. Slt hoar frost late evng			
WED	21	<u>1035.8</u>	6.3	2.9	4.6	<u>-6.9</u>	6.5	9.0	170	09	7.9	18	1.4	NIL	Fair bec cloudy. Rain mid a.m. to early p.m. Ice pellets a.m.			
THU	22	1030.8	6.2	2.3	4.3	4.0	6.6	8.8	130	12	11.5	22	NIL	4.9	Cloudy bec fair late a.m. Ocnl dry air. Fine p.m.			
FRI	23	1027.2	6.1	<u>0.7</u>	3.4	-2.7	5.9	8.7	070	13	17.3	36	TR	4.0	Fine bec fair. Cloudy p.m.			
SAT	24	1030.1	6.8	4.2	5.5	3.0	5.8	8.5	050	19	18.8	33	0.3	0.6	Cloudy. Ocnl slt rain a.m. Slt shwrs p.m. Sleet. Fine, dry air late			
SUN	25	1028.3	5.9	3.5	4.7	1.9	5.9	8.2	040	20	20.8	42	2.9	NIL	Fine bec cloudy. Shwrs, ocnl ice pellets or sleet.			
MON	26	1030.1	4.7	1.8	3.3	1.4	5.5	8.1	070	14	16.6	29	NIL	5.8	Cloudy bec haze. Fair late a.m., fine p.m. Tempo dry air			
TUE	27	1022.4	4.3	1.1	2.7	-2.1	5.0	7.8	070	16	14.5	26	NIL	7.6	Mainly fine, ocnl haze a.m. Slt hoar frost. Dry air p.m.			
WED	28	1019.6	<u>4.1</u>	0.8	2.5	-2.0	4.5	7.7	080	13	14.0	27	NIL	7.7	Fine, haze & hoar frost early. Tempo dry air p.m.			
THU	29	1020.8	5.7	1.6	3.7	-1.0	<u>4.3</u>	7.6	090	19	16.8	32	NIL	8.1	Fine, ocnl fair a.m. Slt hoar frost early			
FRI	30	1019.6	5.8	3.0	4.4	1.0	<u>4.3</u>	<u>7.2</u>	100	11	11.0	21	NIL	<u>8.5</u>	Fine, dew early.			
SAT	31	1018.0	7.2	1.9	4.6	-0.7	4.4	<u>7.2</u>	090	13	13.7	25	NIL	7.9	Fine bec fair, dew early			
MEAN		1014.4	9.1	5.3	7.2	3.1	7.3	8.9	SW	16.3	16.6	TOTAL	123.4	112.8				
30 YEAR AVE. 1961-90		1016.2	8.1	4.4	6.2	2.5	6.4	7.8	W	14.7	14.9	////	96.3	52.6				
EXTREMES ARE IN BOLD TYPE	NUMBER OF DAYS WITH	RAIN ≥0.2mm	WET ≥1.0mm	SNOW/ SLEET	HAIL	THUNDER	LGHTNG	AIR FROST	GROUND FROST	FOG	FOG 9a.m.	GALE	NO SUN	TOTALS FOR YEAR TO DATE				
		18		2	9	4	6	0	7	2	1	7	5					
RECORDS FROM JANUARY 1947															RAINFALL	123.4mm	SUNSHINE	112.8hrs
WETTEST DAY DAY/YEAR	32.3mm 5th/1959	DRIEST MONTH YEAR		15.4mm 1992	LOWEST MIN DAY/YEAR		-7.8°C 20th/1963	WARMEST MNTH YEAR		8.5°C 1993	SUNNIEST MNTH YEAR		97.2hrs 1959	RAIN DAYS	18	SUNLESS DAYS	5	
WETTEST MNTH DAY/YEAR	190.4mm 1988	HIGHEST MAX DAY/YEAR		13.3°C 4th/1948	LOWEST GRASS DAY/YEAR		-10.0°C 29th/1947	COLDEST MONTH YEAR		1.5°C 1963	DULLEST MNTH YEAR		26.0hrs 1966	WET DAYS	16			

METEOROLOGICAL OBSERVATIONS GUERNSEY AIRPORT. FEBRUARY 1998

DAY	DATE	BAROMETER	TEMPERATURE deg C						WIND				RAIN	SUN	WEATHER	
		mb	AIR			GRASS	SOIL		DIR'N	SPEED(knots)						
		at 9a.m.	MAX	MIN	MEAN	MIN	30cm	100cm	9a.m.	9a.m.	MEAN	MAX	mm	hrs		
SUN	1	1016.7	<u>5.3</u>	3.3	4.3	-0.8	4.4	7.0	060	09	8.7	23	TR	0.7	Fair, haze bec cloudy. Slt shwrs. Fair late p.m.	
MON	2	1015.5	<u>7.2</u>	<u>0.4</u>	<u>3.8</u>	-5.2	4.2	6.9	030	05	6.2	14	NIL	6.1	Fine, hoar frost. Fair ocnl cloudy early p.m.	
TUE	3	1014.6	6.7	2.7	4.7	-4.5	4.2	6.9	030	06	5.6	17	NIL	4.6	Fair or fine, hoar frost. Ocnl cloudy early p.m., tempo dry air	
WED	4	1016.5	8.5	2.9	5.7	<u>-7.2</u>	<u>4.0</u>	6.7	210	03	4.5	13	TR	6.7	Fair , hoar frost bec cloudy. Fair late a.m. Mainly cloudy late evng	
THU	5	1022.8	9.8	5.9	7.9	2.2	4.8	<u>6.6</u>	290	03	4.1	09	0.1	NIL	Cloudy, slt rain early & p.m.	
FRI	6	1022.8	8.6	6.8	7.7	6.2	5.7	6.7	200	10	10.3	25	3.9	0.1	Cloudy, slt rain mid a.m.	
SAT	7	1020.8	10.4	6.1	8.3	2.7	5.9	6.7	320	08	9.5	28	TR	8.2	Cloudy bec rain, tempo hvy rain mid a.m. bec fair or fine	
SUN	8	1027.9	9.2	6.7	8.0	2.0	6.2	6.9	210	06	7.3	16	0.1	2.5	Cloudy, dew bec fair. Cloudy early p.m. Fair evng, de. Haze late	
MON	9	1025.4	7.5	4.2	5.9	4.0	6.3	6.9	160	07	7.1	14	0.1	NIL	Cloudy, haze bec mist. Fog from mid a.m. Thick fog p.m. Mist late	
TUE	10	1028.6	9.0	4.5	6.8	-1.4	6.2	7.0	230	03	5.0	14	NIL	0.3	Fine, mist & shallow fog, dew bec cloudy	
WED	11	1028.3	10.5	7.0	8.8	4.3	6.4	7.2	170	13	9.5	19	0.2	6.5	Fair, haze & dew. Fog patches a.m. Mist late evng	
THU	12	1031.1	10.7	7.9	9.3	5.4	6.9	7.2	160	06	6.9	14	0.1	4.7	Fair, mist & hvy dew. Cloudy late a.m., adj fog bec fair	
FRI	13	1033.8	12.3	7.6	10.0	3.5	7.3	7.3	130	04	5.4	13	NIL	8.9	Fine, haze tempo mist, dew	
SAT	14	1033.4	<u>14.6</u>	7.8	<u>11.2</u>	0.0	7.2	7.3	170	04	5.4	13	NIL	9.3	Fine, haze. Dew early. Fair evng	
SUN	15	1031.0	13.1	8.0	10.6	-0.3	7.5	7.5	160	09	9.2	22	0.2	4.8	Fair or fine, haze. Dew early. Cloudy pm. Drzl & fog late pm	
MON	16	1027.8	11.6	<u>8.9</u>	10.3	7.8	8.2	7.7	300	15	14.7	29	TR	5.3	Drzl & thick fog early, bec fair late a.m. Tempo cloudy evng	
TUE	17	1037.7	11.6	6.8	9.2	3.3	8.2	7.7	080	04	6.6	15	NIL	<u>9.7</u>	Fair bec fine, dew.	
WED	18	1031.6	8.9	5.6	7.3	-0.5	7.7	7.9	160	11	8.7	19	TR	5.0	Fine, dew early bec fair. Haze p.m. Cloudy evng, slt rain later	
THU	19	1029.8	10.7	8.8	9.8	4.0	7.8	7.9	210	07	8.0	18	TR	NIL	Cloudy, mist. Tempo slt drzl a.m., bec haze. Fair, dew evng	
FRI	20	1017.0	11.9	7.3	9.6	6.3	8.2	8.0	150	15	10.4	22	1.5	3.0	Fair to cloudy, mist & dew bec haze. Slt rain late p.m.	
SAT	21	<u>1010.7</u>	11.3	6.4	8.9	<u>8.1</u>	8.5	8.0	170	14	11.7	34	<u>5.1</u>	4.0	Cloudy, rain mid a.m. to midday bec fine p.m. Hvy shwrs evng	
SUN	22	1022.2	9.4	5.7	7.6	3.0	8.2	8.2	320	15	13.4	31	NIL	8.7	Cloudy early bec fair or fine. Slt shwrs mid a.m.	
MON	23	1037.5	11.5	5.0	8.3	0.5	7.8	8.2	280	09	10.3	21	TR	2.2	Fair or fine bec cloudy mid a.m. Slt rain early p.m. bec fair	
TUE	24	<u>1040.3</u>	11.2	7.2	9.2	4.0	8.0	8.2	320	08	7.6	16	NIL	7.3	Fair, dew bec cloudy mid a.m. Fair late a.m. Cloudy evng	
WED	25	<u>1040.3</u>	12.0	7.0	9.5	6.8	8.5	8.3	070	04	<u>3.3</u>	11	NIL	4.2	Cloudy bec fine early p.m. Dry air. Haze evng	
THU	26	1034.4	11.8	6.0	8.9	-1.8	8.2	8.3	100	<u>02</u>	5.0	17	0.2	2.2	Fine, haze & dew, bec cloudy. Ocnl fair p.m.	
FRI	27	1025.9	10.2	8.4	9.3	7.9	<u>8.7</u>	8.3	240	14	<u>15.7</u>	32	2.3	NIL	Cloudy,rain & drzl mid to late am. Slt shwrs evng	
SAT	28	1017.6	9.2	5.4	7.3	4.5	8.5	<u>8.5</u>	310	<u>17</u>	15.2	<u>35</u>	1.2	2.1	Cloudy, ocnl rain or shwrs early. Dry air, ocnl fair	
MEAN		1026.5	10.2	6.1	8.1	2.3	6.9	7.5	S	8.3	8.4	TOTAL	15.0	117.1		
30 YEAR AVE. 1961-90		1015.6	7.8	4.0	5.9	1.1	6.2	7.2	E	14.0	14.0	////	79.3	79.1		
EXTREMES ARE IN BOLD TYPE	NUMBER OF DAYS WITH	RAIN ≥0.2mm	WET ≥1.0mm	SNOW/ SLEET	HAIL	THNDER	LGHTNG	AIR FROST	GROUND FROST	FOG	FOG 9a.m.	GALE	NO SUN	TOTALS FOR YEAR TO DATE		
		8	5	0	0	0	0	0	8	4	2	0	4			
RECORDS FROM JANUARY 1947															RAINFALL 138.4mm	SUNSHINE 229.9hrs
WETTEST DAY	59.0mm	DRIEST MONTH	4.8mm	LOWEST MIN	-7.2°C	WARMEST MNTH	9.0°C	SUNNIEST MNTH	140.9hrs	RAIN DAYS 26 WET DAYS 21						
DAY/YEAR	18th/1978	9	6	1965	DAY/YEAR	21st/48,7	000	8	1990							
WETTEST MNTH	182.8mm	HIGHEST MAX	15.0°C	LOWEST GRASS	-11.1°C	COLDEST MNTH	1.5°C	DULLEST MNTH	36.1hrs							
DAY/YEAR	1978	DAY/YEAR	29th/1948	DAY/YEAR	12th/1978	YEAR	1986	YEAR	1976							

METEOROLOGICAL OBSERVATIONS GUERNSEY AIRPORT. MARCH 1998

DAY	DATE	BAROMETER	TEMPERATURE deg C						WIND				RAIN	SUN	WEATHER			
		mb	AIR			GRASS	SOIL		DIR'N	SPEED(knots)								
			at 9a.m.	MAX	MIN	MEAN	MIN	30cm		100cm	9a.m.	9a.m.				MEAN	MAX	
SUN	1	1017.5	11.1	<u>3.4</u>	7.3	-1.0	7.9	8.6	250	14	13.0	25	1.5	7.1	Fair, ocnl cloudy, shwrs			
MON	2	1019.3	10.2	7.7	9.0	5.0	8.0	8.5	240	10	13.0	32	1.2	NIL	Fair bec cloudy. Shwrs a.m. Rain late p.m.			
TUE	3	1005.1	12.3	9.4	10.9	8.0	8.4	<u>8.4</u>	210	<u>28</u>	19.4	37	10.9	NIL	Cloudy, rain & drzl. Mod rain early p.m. Fog patch			
WED	4	<u>999.5</u>	12.1	6.3	9.2	8.4	9.2	<u>8.5</u>	290	13	20.3	45	0.7	4.6	Cloudy, rain. Tempo hvy rain mid a.m. Ocnl fair p.m. Shwrs			
THU	5	1023.1	10.9	5.3	8.1	3.5	8.6	8.6	270	16	17.5	<u>47</u>	2.0	6.0	Shwrs early. Ice pellets. Fair or fine, dry air. Gradu cloudy p.m. Rain			
FRI	6	1018.2	10.4	8.2	9.3	6.2	8.7	8.7	230	20	19.5	35	3.7	NIL	Cloudy. Rain & drzl a.m. Slt rain late p.m.			
SAT	7	1010.7	11.9	9.2	10.6	8.6	9.0	8.8	240	21	<u>21.1</u>	38	1.1	5.6	Rain & drzl early. Adj. fog. Fair mid a.m. Slt shwrs. Hvy shwr late p.m.			
SUN	8	1009.6	11.3	7.2	9.3	6.5	9.2	8.8	260	07	10.1	29	5.5	1.5	Fair bec cloudy, shwrs. Rain mid a.m. Hvy rain late a.m. Shwrs			
MON	9	1025.9	<u>8.4</u>	4.5	<u>6.5</u>	3.4	9.0	8.8	100	16	12.2	24	NIL	6.8	Cloudy, slt shwrs early. Fair late a.m. Dry air. Exceptional vis			
TUE	10	1027.6	8.7	5.4	7.1	1.8	7.9	8.9	180	17	17.4	34	1.1	NIL	Fair, dry air bec cloudy. Rain & drzl p.m.			
WED	11	1015.6	9.5	7.2	8.4	5.5	8.0	8.7	330	26	20.3	42	TR	2.9	Mainly cloudy. Gradu fair p.m., dry air			
THU	12	1030.1	<u>8.4</u>	5.5	7.0	2.9	<u>7.7</u>	8.8	010	11	10.1	28	TR	4.3	Fair or fine bec cloudy p.m. Slt rain late evng			
FRI	13	1028.9	10.3	7.9	9.1	5.0	8.2	8.7	350	07	7.3	15	NIL	NIL	Cloudy. Inter slt rain a.m.			
SAT	14	1033.5	11.7	5.4	8.6	5.1	8.7	8.7	350	06	4.9	13	NIL	5.4	Cloudy bec fair p.m., then fine. Dew evng. Cloudy later			
SUN	15	1036.2	9.3	5.3	7.3	-1.1	8.8	8.7	320	06	4.8	12	NIL	NIL	Cloudy			
MON	16	1034.1	9.2	4.8	7.0	5.4	9.0	8.8	290	<u>02</u>	<u>4.7</u>	13	NIL	0.1	Cloudy. Ocnl haze a.m. Fine evng			
TUE	17	1034.8	10.9	4.3	7.6	-0.7	8.7	8.8	330	03	5.8	15	NIL	2.0	Cloudy, tempo fine mid a.m. & around midday			
WED	18	1038.4	11.0	5.9	8.5	7.5	9.3	8.8	030	04	5.5	12	NIL	1.3	Cloudy. Fine evng bec ocnl fair, dew			
THU	19	<u>1042.6</u>	11.0	5.4	8.2	-1.8	8.8	9.0	050	12	7.7	18	NIL	9.7	Fine, dew early. Fair late a.m. Fine again evng, dew			
FRI	20	1040.9	11.2	5.3	8.3	0.2	8.7	9.0	050	07	6.0	13	NIL	<u>10.8</u>	Fine, dew. Tempo haze mid a.m. Ocnl dry air. Cloudy late evng			
SAT	21	1036.9	11.2	6.9	9.1	2.9	8.9	9.0	070	07	8.8	19	NIL	2.1	Ocnl fine early. Cloudy. Haze mid a.m.			
SUN	22	1035.1	10.4	6.7	8.6	6.8	9.2	9.1	060	10	11.6	26	NIL	3.4	Cloudy bec fine p.m.			
MON	23	1033.2	10.5	5.0	7.8	-0.3	8.7	9.0	030	05	5.7	13	NIL	10.2	Fine, dew early. Ocnl fair late a.m. Cloudy late evng			
TUE	24	1031.8	9.2	6.2	7.7	0.3	8.8	9.1	120	05	4.7	11	1.6	NIL	Cloudy. Haze late a.m.			
WED	25	1028.7	8.8	7.2	8.0	4.5	9.0	9.0	180	08	9.3	22	<u>12.1</u>	NIL	Cloudy, haze. Rain mid a.m., tempo mod rain. Fog patches p.m.			
THU	26	1018.8	9.8	8.3	9.1	8.0	9.0	9.0	210	16	14.2	26	5.8	NIL	Rain, drzl & mist. Ocnl mod rain. Fog by evng			
FRI	27	1018.5	12.2	9.5	10.9	<u>9.2</u>	9.2	9.1	220	08	8.7	21	1.2	1.2	Drzl & fog, ocnl thick fog bec cloudy			
SAT	28	1012.3	<u>15.4</u>	9.6	<u>12.5</u>	8.1	9.8	9.1	140	10	8.4	28	NIL	0.2	Cloudy, rain mid a.m. Tempo fair late a.m. Ocnl slt drzl p.m.			
SUN	29	1004.7	13.4	<u>10.3</u>	11.9	<u>9.2</u>	10.0	9.2	130	10	9.4	24	5.2	NIL	Cloudy, haze. Ocnl fair early. Slt rain late a.m. Mod rain evng			
MON	30	1011.4	12.0	7.6	9.8	8.7	<u>10.1</u>	9.4	220	12	9.6	24	0.1	1.7	Slt rain early. Drzl & thick fog late a.m. Ocnl fair p.m. Shallow fog			
TUE	31	1016.5	13.2	6.9	10.1	<u>-2.0</u>	9.8	<u>9.5</u>	100	04	6.8	16	0.8	5.4	Fine, dew bec fair. Shallow Fog. Fog patches mid a.m. Rain later			
MEAN		1023.9	10.8	6.7	8.8	4.3	8.8	8.9	SW	11.0	10.9	TOTAL	54.5	92.3				
30 YEAR AVE. 1961-90		1016.1	9.2	4.7	7.0	2.5	7.1	7.5	W	13.3	13.0	////	70.2	131.3				
EXTREMES ARE IN BOLD TYPE	NUMBER OF DAYS WITH	RAIN ≥0.2mm	WET ≥1.0mm	SNOW/ SLEET	HAIL	THUNDER	LIGHTNG	AIR FROST	GROUND FROST	FOG	FOG 9a.m.	GALE	NO SUN	TOTALS FOR YEAR TO DATE				
		15	13	0	1	0	0	0	6	6	1	0	10					
RECORDS FROM JANUARY 1947															RAINFALL	192.9mm	SUNSHINE	322.2hrs
WETTEST DAY	30.0mm	DRIEST MONTH		2.7mm	LOWEST MIN		-2.2°C	WARMEST MNTH		10.3°C	SUNNIEST MNTH		206.1hrs	RAIN DAYS	41	SUNLESS DAYS	19	
DAY/YEAR	28th/1960	YEAR		1961	DAY/YEAR		10th/11th/1958	YEAR		1957	YEAR		1973	WET DAYS	35			
WETTEST MNTH	160.2mm	HIGHEST MAX		19.4°C	LOWEST GRASS		-9.4°C	COLDEST MNTH		4.4°C	DULLEST MNTH		67.4hrs					
DAY/YEAR	1947	DAY/YEAR		29th/1965	DAY/YEAR		3rd/1965	YEAR		1962	YEAR		1964					

23

DAY	DATE	BAROMETER	TEMPERATURE deg C						WIND				RAIN	SUN	WEATHER			
		mb	AIR			GRASS	SOIL		DIR'N	SPEED(knots)			mm	hrs				
		at 9a.m.	MAX	MIN	MEAN	MIN	30cm	100cm	9a.m.	9a.m.	MEAN	MAX						
WED	1	1011.1	14.1	9.2	11.7	7.5	10.3	9.5	190	07	7.7	17	5.9	2.4	Cloudy, mist or haze. Tempo fair a.m. Slt rain early p.m. Hvy shwr			
THU	2	1001.3	11.8	8.7	10.3	5.8	10.5	9.6	140	06	10.0	33	3.5	0.4	Fair bec cloudy. Rain mid a.m. Rain & drzl evng. Hvy rain bec fair			
FRI	3	987.7	12.5	7.7	10.1	5.8	10.4	9.8	210	20	18.8	38	8.8	7.1	Mainly fair. Shwrs. Waterspout. Cloudy evng Hvy shwr late p.m.			
SAT	4	987.0	12.3	8.4	10.4	7.3	10.1	9.8	230	22	20.2	37	1.4	7.5	Mainly cloudy a.m., shwrs. Ice pellets. Ocnl fair p.m.			
SUN	5	995.9	12.0	7.7	9.9	6.2	10.1	9.8	220	14	16.0	31	7.0	7.8	Cloudy, shwrs. Fair late a.m. Shwrs evng. Hvy shwr late p.m.			
MON	6	1002.1	11.8	7.3	9.6	6.0	10.0	9.9	210	15	10.9	31	3.2	7.7	Frequent shwrs a.m. Mainly fair p.m.			
TUE	7	1000.9	11.9	5.5	8.7	-0.8	10.0	9.9	280	06	6.2	16	NIL	10.3	Hvy shwr early. Fair			
WED	8	1005.1	11.7	5.5	8.6	-1.6	9.9	10.0	300	06	7.7	22	6.9	8.3	Fine, dew. Shallow fog. Fair, ocnl cloudy p.m. shwrs			
THU	9	990.3	8.8	4.1	6.5	2.1	9.7	10.0	150	04	4.2	14	2.8	4.3	Hvy rain early, then shwrs. Fair ocnl cloudy. Lghtng late p.m.			
G.FRI	10	992.2	7.2	4.0	5.6	1.9	9.2	9.9	010	13	11.0	24	11.3	NIL	Hvy shwr early. Ocnl rain. Rain p.m. Hvy rain evng			
SAT	11	999.4	6.7	4.6	5.7	3.7	8.6	9.8	350	13	13.9	32	4.2	NIL	Cloudy, rain early. Shwrs p.m. Rain evng			
E.SUN	12	1009.5	7.0	1.5	4.3	1.6	7.9	9.7	300	12	8.0	24	4.8	6.7	Fair ocnl cloudy. Shwrs. Sn late a.m., sn pellets. Slt TS late p.m.			
E.MON	13	1012.2	8.1	1.5	4.8	-2.5	7.5	9.5	340	09	7.8	26	1.7	10.5	Shwrs, sleet or Sn pellets. Fair, dry air. Snow shwr evng			
TUE	14	1003.0	8.4	3.2	5.8	-1.2	7.6	9.3	190	09	7.0	23	13.6	4.9	Snow shwr early. Cloudy, ocnl fair a.m. Dry air. Rain evng, sleet			
WED	15	994.0	8.7	2.3	5.5	1.5	7.9	9.3	300	19	16.7	32	2.0	6.0	Rain or sleet early. Cloudy, ocnl fair. Slt shwrs p.m. Dry air			
THU	16	989.1	9.7	4.8	7.3	1.4	7.6	9.1	140	16	15.1	44	22.0	NIL	Fair, dry air. Rain from mid a.m. Ocnl hvy rain			
FRI	17	994.3	10.3	4.7	7.5	3.4	7.4	9.0	350	22	20.2	42	TR	4.3	Rain, ocnl hvy early. Cloudy, slt shwrs bec fair p.m.			
SAT	18	1007.2	11.0	6.0	8.5	3.5	7.4	8.9	320	11	9.8	25	0.7	7.5	Fine bec cloudy. Fair late a.m. Slt shwrs p.m.			
SUN	19	1006.0	10.6	6.5	8.6	2.7	8.1	8.8	160	12	8.8	24	5.6	NIL	Fair bec cloudy. Rain mid a.m. Tempo hvy rain p.m. Fog patches			
MON	20	1010.5	12.1	8.2	10.2	6.4	8.7	8.9	270	13	9.5	20	TR	5.1	Cloudy, dew. Shwrs mid a.m. Fair p.m.			
TUE	21	1014.0	12.0	8.5	10.3	5.6	9.2	9.0	170	11	8.7	18	0.4	1.2	Mainly cloudy. Rain late p.m.			
WED	22	1009.2	16.0	9.9	13.0	8.5	9.8	9.0	140	07	6.0	17	2.6	2.5	Rain to mid a.m. Mainly cloudy, shwrs. Rain evng			
THU	23	1007.8	12.9	8.3	10.6	7.5	10.3	9.2	160	16	15.8	34	3.2	1.8	Mainly cloudy. Rain mid to late a.m., hvy rain. Fair early p.m.			
FRI	24	1016.6	11.8	9.5	10.7	8.1	10.0	9.4	190	12	12.7	26	6.1	1.2	Cloudy. Rain, drzl & fog late a.m. Thick fog early p.m. Mist.			
SAT	25	1012.0	12.7	9.0	10.9	8.7	10.3	9.5	250	11	11.0	26	0.2	7.8	Rain & drzl. Tempo thick fog. Ocnl fair late a.m., bec fine p.m.			
SUN	26	1005.8	12.6	8.6	10.6	6.0	10.6	9.6	210	14	11.1	23	0.2	11.7	Fine, dew. Slt shwr mid a.m. & late p.m.			
MON	27	1004.0	12.7	7.0	9.9	2.6	10.9	9.8	250	09	7.9	17	0.3	13.3	Fair, shwrs early. Funnel cloud. Fair or fine. Shwr late p.m.			
TUE	28	1005.4	12.8	7.7	10.3	4.5	11.1	9.8	220	09	8.4	21	2.7	10.0	Fair or fine, slt shwr early. Cloudy by evng			
WED	29	996.2	12.2	8.7	10.5	6.3	11.2	10.0	110	11	11.7	30	1.3	0.4	Cloudy ocnl rain. Tempo mod rain			
THU	30	1007.2	12.1	9.0	10.6	6.2	11.0	10.2	040	19	16.1	37	TR	3.5	Cloudy, ocnl fair early, dew. Bec haze. Slt rain a.m. Ocnl fair p.m.			
MEAN		1002.6	11.2	6.6	8.9	4.2	9.4	9.5	SW	12.3	11.3	TOTAL	122.4	154.2				
30 YEAR AVE. 1961-90		1015.6	11.0	6.0	8.5	3.5	9.2	9.0	NE	12.9	12.2	////	51.4	182.9				
EXTREMES ARE IN BOLD TYPE	NUMBER OF DAYS WITH	RAIN ≥0.2mm	WET ≥1.0mm	SNOW/ SLEET	HAIL	THUNDER	LGHTNG	AIR FROST	GROUND FROST	FOG	FOG 9a.m.	GALE	NO SUN	TOTALS FOR YEAR TO DATE				
		26	21	4	6	1	3	0	4	3	0	0	4					
RECORDS FROM JANUARY 1947															RAINFALL	315.3mm	SUNSHINE	476.4hrs
WETTEST DAY DAY/YEAR		23.8mm 30th/1953	DRIEST MONTH YEAR		2.9mm 1980	LOWEST MIN DAY/YEAR		-1.4°C 11th/1986	WARMEST MNTH YEAR		10.9°C 1961	SUNNIEST MNTH YEAR		280.4hrs 1984	RAIN DAYS	67	SUNLESS DAYS	23
WETTEST MNTH DAY/YEAR		130.4mm 1966	HIGHEST MAX DAY/YEAR		23.0°C 22nd/1984	LOWEST GRASS DAY/YEAR		-7.0°C 5th/1990	COLDEST MNTH YEAR		6.4°C 1986	DULLEST MNTH YEAR		122.2hrs 1981	WET DAYS	56		

METEOROLOGICAL OBSERVATIONS GUERNSEY AIRPORT. MAY 1998

DAY	DATE	BAROMETER	TEMPERATURE deg C					WIND				RAIN	SUN	WEATHER							
		mb	AIR			GRASS	SOIL		DIR'N	SPEED(knots)			mm		hrs						
		at 9a.m.	MAX	MIN	MEAN	MIN	30cm	100cm	9a.m.	9a.m.	MEAN	MAX									
FRI	1	1019.1	10.6	8.0	9.3	7.2	10.6	10.2	020	13	12.0	26	0.1	NIL	Cloudy. Slight rain evening						
SAT	2	1017.0	11.5	8.0	9.8	7.0	10.4	10.2	020	11	9.0	23	TR	0.1	Cloudy. Ocnl slt rain or drizzle. Fine, dew late pm						
SUN	3	1018.7	11.4	7.5	9.5	0.0	10.2	10.3	030	15	11.7	29	0.1	2.8	Fine, dew bec cloudy. Slt shwrs.						
B.HOL	4	1020.8	12.8	4.9	8.9	-2.8	10.1	10.2	340	09	7.4	15	NIL	13.5	Fine, dew early bec fair. Cloudy late pm						
TUE	5	1016.8	13.0	8.7	10.9	6.7	11.1	10.2	290	16	15.1	28	0.5	5.6	Cloudy bec fine, dew. Mainly cloudy. Drzl late pm						
WED	6	1010.3	11.0	10.0	10.5	8.9	11.2	10.3	240	16	16.2	29	TR	NIL	Cloudy, drzl early. Ocnl rain & drzl. Fog patch am						
THU	7	1014.9	15.3	10.3	12.8	9.4	11.0	10.4	200	13	8.8	23	1.0	6.3	Cloudy. Tempo hvy rain late am bec fair pm, fine evng						
FRI	8	1016.0	20.7	9.9	15.3	4.3	11.6	10.4	160	11	8.9	24	NIL	8.8	Fine, slt dew bec fair. Ocnl cloudy pm						
LIB.D	9	1020.1	16.5	11.0	13.8	7.9	12.6	10.6	260	13	8.4	26	NIL	10.3	Fair bec cloudy, mist. Fog patch am. Fair late am						
SUN	10	1017.5	18.9	10.2	14.6	6.9	12.9	10.7	050	14	9.5	21	0.2	6.7	Fair. Ocnl cloudy late am, slt shwr. Cloudy evng. Rain later, TS						
MON	11	1012.5	18.8	12.2	15.5	11.2	13.5	11.0	050	14	11.4	28	TR	9.3	Cloudy, haze. Slt rain. Fair late am bec ocnl fine.						
TUE	12	1016.6	20.1	12.7	16.4	9.5	14.0	11.3	260	02	5.7	14	NIL	10.7	Fair ocnl cloudy early, haze						
WED	13	1019.0	22.0	12.4	17.2	11.2	14.7	11.7	240	03	4.8	16	0.3	5.3	Fair, mist or haze bec cloudy. Fog patches. Fair. Slt rain evng						
THU	14	1020.1	22.0	10.8	16.4	7.4	15.2	11.8	330	06	6.9	15	NIL	13.0	Fine, mist. Fog patches mid am bec haze. Fog patch late pm						
FRI	15	1020.3	20.2	13.4	16.8	11.2	15.6	12.2	020	09	9.0	22	NIL	11.0	Fine, haze & dew. Cloudy mid am, thick fog bec fine, haze						
SAT	16	1021.2	20.0	12.8	16.4	7.5	15.5	12.5	030	12	9.7	23	NIL	14.3	Fine, haze. Tempo fair am. Dry air pm						
SUN	17	1023.3	17.5	10.9	14.2	7.5	15.2	12.7	040	13	12.6	25	NIL	14.5	Fine, ocnl fair am. Dry air pm						
MON	18	1026.4	19.5	11.0	15.3	8.9	14.8	12.9	050	12	11.6	21	NIL	13.8	Fine. Dry air pm						
TUE	19	1027.1	19.8	11.6	15.7	9.2	15.0	13.0	070	13	12.0	23	NIL	14.0	Fine. Dry air late am						
WED	20	1024.7	20.8	10.5	15.7	7.2	14.9	13.0	050	13	9.6	22	NIL	14.4	Fine. Dry air pm						
THU	21	1023.0	19.1	12.5	15.8	9.1	15.4	13.1	350	07	7.6	16	NIL	13.0	Fine. Tempo haze mid am. Fair late am. Tempo cloudy evng						
FRI	22	1027.8	15.2	10.3	12.8	8.7	15.5	13.3	070	12	7.9	20	NIL	8.3	Fair, haze bec cloudy. Fair late am. Tempo dry. Fine evng						
SAT	23	1025.2	16.5	9.5	13.0	5.0	15.1	13.4	030	11	8.3	19	NIL	12.2	Cloudy. Tempo fair mid am. Fine late am. Dry air. Dew late pm						
SUN	24	1018.9	15.9	11.3	13.6	9.5	15.3	13.4	350	08	7.7	15	NIL	9.6	Fine, dew bec cloudy. Fair late am, tempo fine. Cloudy late evng						
B.HOL	25	1014.1	16.2	10.7	13.5	9.1	15.6	13.5	320	07	8.9	19	TR	8.2	Cloudy bec fair mid am. Ocnl cloudy. Fine, dew late evng						
TUE	26	1006.9	14.9	10.5	12.7	8.0	15.5	13.7	240	09	9.3	20	1.1	6.5	Mainly cloudy am. Ocnl mist. Shwr late am. Bec fair pm						
WED	27	1005.7	14.6	8.6	11.6	2.8	15.0	13.8	340	06	6.5	16	NIL	11.5	Fine, dew. Ocnl cloudy am & evng. Fine, dew late pm						
THU	28	1006.6	15.5	8.0	11.8	2.5	14.7	13.8	020	04	6.5	18	2.6	3.3	Fine, dew bec mainly cloudy. Shwr midday. TS late evng, rain						
FRI	29	1009.4	16.3	8.5	12.4	6.0	14.4	13.8	180	11	9.1	20	TR	13.7	Slt shwr early, lghtng bec fair or fine						
SAT	30	1007.1	18.0	12.3	15.2	9.5	15.0	13.7	070	18	13.8	29	0.7	0.2	Cloudy. Ocnl rain						
SUN	31	1009.7	17.0	11.1	14.1	8.5	14.7	13.8	160	10	8.8	18	0.1	14.2	Cloudy bec fine. Shower pm						
MEAN		1017.3	16.8	10.3	13.6	7.3	13.8	12.1	NE	10.7	9.5	TOTAL	6.7	275.1							
30 YEAR AVE. 1961-90		1015.7	14.0	8.4	11.2	6.0	12.4	11.4	NE	12.2	11.3	////	50.8	233.9							
EXTREMES ARE IN BOLD TYPE	NUMBER OF DAYS WITH	RAIN ≥0.2mm	WET ≥1.0mm	SNOW/ SLEET	HAIL	THNDER	LGHTNG	AIR FROST	GROUND FROST	FOG	FOG 9a.m.	GALE	NO SUN	TOTALS FOR YEAR TO DATE							
		7		3		0		0		2	3					0	1	5	1	0	2
RECORDS FROM JANUARY 1947																					
WETTEST DAY DAY/YEAR	40.4mm 24th/1950	DRIEST MONTH YEAR		4.1mm 1989		LOWEST MIN DAY/YEAR		0.1°C 2nd/1979		WARMEST MNTH YEAR				13.9°C 1989	SUNNIEST MNTH YEAR		336.4hrs 1989	RAINFALL 322.0mm	SUNSHINE 751.5hrs		
														RAIN DAYS 74	SUNLESS DAYS 25						
														WET DAYS 59							
WETTEST MNTH DAY/YEAR	128.7mm 1994	HIGHEST MAX DAY/YEAR		25.7°C 5th/1995		LOWEST GRASS DAY/YEAR		-5.6°C 5th/1979		COLDEST MNTH YEAR				9.9°C 1984	DULLEST MNTH YEAR		136.9hrs 1981				

METEOROLOGICAL OBSERVATIONS GUERNSEY AIRPORT. JUNE 1998

DAY	DATE	BAROMETER	TEMPERATURE deg C						WIND				RAIN	SUN	WEATHER			
		mb	AIR			GRASS	SOIL		DIR'N	SPEED(knots)			mm	hrs				
		at 9a.m.	MAX	MIN	MEAN	MIN	30cm	100cm	9a.m.	9a.m.	MEAN	MAX						
MON	1	1010.3	14.5	11.4	13.0	9.2	15.4	13.8	120	08	9.0	20	6.7	2.1	Fair or fine bec cloudy, slt rain. Tempo hvy rain evng			
TUE	2	1006.4	16.4	11.7	14.1	11.5	14.8	13.9	240	18	10.9	28	11.3	7.5	Rain, tempo mod. Fog patch am. Fair late am. Shwrs pm			
WED	3	1011.2	15.6	11.5	13.6	10.5	15.1	13.8	190	12	11.6	26	TR	6.3	Cloudy, hvy shwrs early. Ocnl fair pm. Fine later, dew			
THU	4	1020.4	16.4	8.5	12.5	1.4	14.8	13.9	080	05	7.2	23	NIL	13.0	Fine, dew bec fair. Ocnl dry air pm			
FRI	5	1012.1	18.5	11.7	15.1	9.9	15.2	13.9	070	15	11.3	21	TR	4.4	Cloudy, ocnl fair. Haze. Mist late pm, lghtng			
SAT	6	1010.3	18.4	13.5	16.0	12.5	15.8	14.0	200	09	8.5	16	2.5	4.7	Cloudy, mist. Adj fog. Fine early pm. Hvy shwrs evng. Fog patch			
SUN	7	1011.9	16.6	12.0	14.3	10.1	15.8	14.1	240	16	14.7	28	NIL	10.8	Fair, dew bec cloudy. Fair again late am, ocnl fine pm			
MON	8	1017.7	15.4	12.2	13.8	10.5	15.7	14.2	200	11	12.2	25	10.4	1.0	Cloudy, slt rain late am. Tempo mod rain pm. Fog late evng			
TUE	9	1009.9	15.9	13.6	14.8	13.5	15.4	14.3	200	14	13.8	27	8.0	2.3	Fog early. Rain & drzl mid am, Ocnl hvy rain, tempo thick fog			
WED	10	1005.3	16.4	12.2	14.3	10.8	15.0	14.3	240	16	15.6	30	1.0	9.4	Fair to cloudy. Slt shwrs			
THU	11	1010.2	13.0	8.6	10.8	7.5	15.0	14.3	300	24	18.6	36	3.1	2.5	Hvy shwr early bec fair. Shwrs late am. Fair again late pm			
FRI	12	1023.1	15.8	10.1	13.0	7.9	13.8	14.3	310	13	10.3	18	7.9	9.1	Fine, dew bec fair. Gradu cloudy pm. Slt rain later			
SAT	13	1010.3	15.2	11.0	13.1	9.8	14.3	14.1	190	11	15.5	28	0.9	2.8	Slt rain. Hvy rain mid am. Rain & drzl, fog patches. Shwrs later			
SUN	14	1009.2	15.9	11.9	13.9	10.7	14.5	14.1	250	14	13.6	27	NIL	8.7	Cloudy, ocnl fair early pm			
MON	15	1014.1	16.6	11.2	13.9	9.3	14.9	14.0	310	13	13.7	26	NIL	8.8	Cloudy bec fair then fine pm			
TUE	16	1022.7	15.9	11.0	13.5	8.9	14.9	14.1	270	14	12.3	24	NIL	13.4	Fine, dew early. Fair evng			
WED	17	1028.0	16.1	9.9	13.0	6.9	15.1	14.2	230	08	6.7	14	TR	4.3	Fine, dew bec cloudy. Ocnl fair pm			
THU	18	1025.4	17.7	12.5	15.1	11.1	15.4	14.3	200	09	6.6	16	TR	6.3	Cloudy, slt rain am. Fair ocnl cloudy pm			
FRI	19	1022.6	24.2	12.8	18.5	6.8	16.0	14.3	140	12	8.3	18	TR	12.8	Mainly fair. Dry air pm			
SAT	20	1016.9	28.2	17.6	22.9	17.1	17.1	14.5	130	12	12.5	24	TR	9.7	Fine bec cloudy. Slt shwr mid am. Fair late am, dry air.			
SUN	21	1020.1	21.7	12.5	17.1	12.4	17.5	14.8	280	12	12.2	23	NIL	10.9	Cloudy bec fog, slt drzl. fair mid am. Dew late evng			
MON	22	1026.1	17.8	13.3	15.6	12.2	17.2	15.0	230	10	10.7	19	TR	11.9	Cloudy bec mainly fair mid am			
TUE	23	1022.6	18.3	12.7	15.5	11.0	17.1	15.0	220	12	10.1	21	NIL	1.8	Fair, dew bec cloudy. Slt rain mid am. Ocnl fair pm			
WED	24	1014.5	16.5	13.0	14.8	11.8	16.8	15.2	160	09	8.0	16	1.0	4.7	Cloudy bec fair. Cloudy late am. Rain or drzl pm. Fair, dew later			
THU	25	1013.8	17.2	12.4	14.8	10.2	16.4	15.3	240	12	11.6	22	0.3	12.7	Fair, dew. Ocnl cloudy mid am, slt rain. Fair ocnl fine			
FRI	26	1012.7	17.7	12.3	15.0	10.6	16.6	15.3	210	12	11.8	26	20.7	1.4	Fair bec cloudy, slt rain & drzl mid am. Slt rain evng			
SAT	27	1009.2	16.3	12.1	14.2	11.9	16.2	15.4	240	14	14.5	27	0.2	6.9	Rain & drzl, hvy early. Ocnl fair late am & pm			
SUN	28	1018.7	16.8	12.5	14.7	10.5	16.0	15.3	240	15	12.7	24	0.1	5.1	Mainly cloudy am, slt shwrs. Ocnl fair pm. Cloudy by evng. Shwrs			
MON	29	1021.4	16.9	12.5	14.7	10.4	16.1	15.3	240	09	10.9	23	4.5	7.3	Fine, dew bec cloudy, slt shwrs. Ocnl fine pm. Cloudy later			
TUE	30	1014.1	18.3	13.3	15.8	11.9	16.3	15.3	280	12	9.7	24	0.2	5.8	Cloudy, rain & drzl. Fog am, tempo thick fog. Fair early pm			
MEAN		1015.7	17.3	12.1	14.7	10.3	15.7	14.5	SW	12.4	11.5	TOTAL	78.8	208.4				
30 YEAR AVE. 1961-90		1018.0	16.8	10.9	13.9	8.8	15.5	14.0	W	11.2	10.5	////	46.4	239.3				
EXTREMES ARE IN BOLD TYPE	NUMBER OF DAYS WITH	RAIN ≥0.2mm	WET ≥1.0mm	SNOW/ SLEET	HAIL	THUNDER	LIGHTNG	AIR FROST	GROUND FROST	FOG	FOG 9a.m.	GALE	NO SUN	TOTALS FOR YEAR TO DATE				
		15	11	0	0	0	2	0	0	7	2	0	0					
RECORDS FROM JANUARY 1947															RAINFALL	400.8mm	SUNSHINE	959.9hrs
WETTEST DAY	46.8mm	DRIEST MONTH	0.6mm	LOWEST MIN	5.4°C	WARMEST MNTH	16.7°C	SUNNIEST MNTH	355.3hrs	RAIN DAYS	89	SUNLESS DAYS	25					
DAY/YEAR	16th/1970	YEAR	1976	DAY/YEAR	1st/1975	YEAR	1976	YEAR	1975	WET DAYS	70							
WETTEST MNTH	129.7mm	HIGHEST MAX	30.8°C	LOWEST GRASS	-3.0°C	COLDEST MNTH	11.3°C	DULLEST MNTH	147.8hrs									
DAY/YEAR	1986	DAY/YEAR	26th/1976	DAY/YEAR	14th/1987	YEAR	1972	YEAR	1977									

METEOROLOGICAL OBSERVATIONS GUERNSEY AIRPORT. JULY 1998

DAY	DATE	BAROMETER	TEMPERATURE deg C						WIND				RAIN	SUN	WEATHER	
		mb	AIR			GRASS	SOIL		DIR'N	SPEED(knots)			mm	hrs		
		at 9a.m.	MAX	MIN	MEAN	MIN	30cm	100cm	9a.m.	9a.m.	MEAN	MAX				
WED	1	1013.3	16.5	12.8	14.7	9.0	16.7	<u>15.3</u>	060	12	13.1	28	NIL	0.1	Fair, dew bec cloudy. Fair late evng	
THU	2	1015.8	16.1	13.3	14.7	12.6	16.1	15.4	060	17	18.5	<u>34</u>	NIL	1.8	Fair bec cloudy. Fair by evng, cloudy later	
FRI	3	1022.4	16.6	12.3	<u>14.5</u>	10.5	<u>15.8</u>	15.4	030	13	10.2	24	NIL	12.7	Cloudy bec fine ocnl fair	
SAT	4	<u>1026.3</u>	17.7	<u>11.5</u>	14.6	8.9	16.2	<u>15.3</u>	300	11	9.1	19	TR	10.9	Fine, dew bec fair. Cloudy evng	
SUN	5	1023.3	18.0	13.8	15.9	12.9	16.7	15.4	280	11	12.3	24	0.1	4.0	Cloudy, ocnl drzl mid am. Tempo fine early pm. cloudy	
MON	6	1016.0	17.4	12.8	15.1	12.6	16.7	15.5	290	11	8.0	17	0.8	0.3	Cloudy, ocnl slt drzl. Drzl & fog late pm	
TUE	7	1014.4	18.0	14.1	16.1	14.0	16.8	15.5	320	06	6.6	16	TR	4.0	Fog, ocnl thick. Rain & drzl early. Mist late am. bec fair pm	
WED	8	1020.0	18.3	12.0	15.2	9.0	16.5	15.6	330	12	12.4	23	4.4	10.3	Fine, dew bec fair. Cloudy by evng	
THU	9	1015.5	<u>15.5</u>	13.5	<u>14.5</u>	11.2	16.7	15.6	250	16	14.5	26	1.9	NIL	Cloudy. Rain & drzl mid am bec fog. Thick fog midday. Cloudy	
FRI	10	1016.0	16.4	14.1	15.3	13.4	16.3	15.7	240	11	13.7	27	0.2	0.8	Cloudy. Rain, drzl & mist early. Slt drzl midday. Drzl & fog evng	
SAT	11	1016.9	16.5	13.5	15.0	11.7	16.3	15.7	250	15	16.8	<u>34</u>	1.2	0.9	Cloudy, slt rain early. Ocnl rain & drzl pm. Fog evng	
SUN	12	1010.0	16.2	14.2	15.2	<u>14.1</u>	16.1	15.6	220	<u>20</u>	<u>19.0</u>	<u>34</u>	4.1	NIL	Drzl & fog early. Rain, drzl & fog patches pm	
MON	13	1011.3	17.1	12.5	14.8	10.6	<u>15.8</u>	15.7	270	16	15.3	28	NIL	<u>14.1</u>	Cloudy bec fair or fine	
TUE	14	1018.1	17.5	12.9	15.2	10.6	16.0	15.4	280	12	14.9	28	0.1	11.5	Fair or fine. Ocnl cloud early pm. Cloudy evng	
WED	15	1017.6	16.6	13.5	15.1	11.7	16.3	15.5	240	15	11.7	23	<u>18.4</u>	1.0	Cloudy. Ocnl slt rain am. Rain late pm	
THU	16	1009.7	17.0	12.9	14.9	12.0	16.3	15.7	250	14	11.3	25	3.0	2.3	Rain, ocnl hvy early. Fog & drzl. Fair evng	
FRI	17	1012.4	17.5	13.5	15.5	11.5	16.4	15.5	250	15	14.4	31	TR	8.3	Fair bec cloudy. Drzl & fog. Ocnl fair from late am	
SAT	18	1015.2	18.1	13.4	15.8	12.2	16.6	15.6	250	12	10.4	20	TR	6.2	Cloudy, ocnl slt rain bec fair or fine by evng. Dew late pm	
SUN	19	1013.8	<u>21.8</u>	13.2	17.5	8.9	16.6	15.6	130	07	5.7	15	NIL	12.7	Fine, dew bec fair. Ocnl cloudy am	
MON	20	<u>1008.6</u>	21.0	<u>14.5</u>	<u>17.8</u>	10.0	17.5	15.7	170	08	8.7	23	TR	11.3	Fair or fine, dew early. Bec cloudy pm, slt shwrs. Fog late pm	
TUE	21	1010.1	17.8	13.9	15.9	11.7	18.0	15.8	220	14	13.3	28	TR	11.6	Slt rain early bec fair. Slt shwr early pm bec fine	
WED	22	1015.5	17.3	13.7	15.5	11.0	17.6	16.0	150	11	8.7	22	5.8	1.8	Fine, dew bec cloudy. Slt rain late am. Rain & drzl pm. Fog	
THU	23	1014.9	18.4	14.0	16.2	12.6	17.1	16.1	240	13	12.3	24	NIL	9.6	Cloudy, hvy shwr early. Mist. Fair late am bec fine	
FRI	24	1024.0	18.5	<u>11.5</u>	15.0	6.8	17.0	16.1	350	04	6.0	14	NIL	8.9	Fine, dew bec fair ocnl cloudy. Gradu fine pm, dew later	
SAT	25	1025.1	18.5	11.8	15.2	8.2	17.2	16.1	010	<u>02</u>	4.5	12	TR	11.0	Fine, dew bec fair. Tempo dry air pm	
SUN	26	1016.6	19.0	<u>11.5</u>	15.3	<u>4.2</u>	17.2	<u>16.3</u>	020	04	<u>4.0</u>	13	TR	4.7	Fine, dew bec cloudy. Slt rain bec fair late am. Cloudy evng	
MON	27	1013.4	18.7	14.4	16.6	12.5	<u>17.5</u>	<u>16.3</u>	280	14	13.3	24	1.5	11.2	Cloudy, slt shwr early. Fair or fine by late am. Cloudy late pm	
TUE	28	1011.9	16.7	14.2	15.5	13.0	<u>17.5</u>	16.2	160	10	12.9	24	0.5	NIL	Cloudy ocnl rain early. Drzl & thick fog late am. Cloudy pm	
WED	29	1011.4	17.6	14.2	15.9	13.0	16.8	<u>16.3</u>	230	14	16.0	28	1.8	3.3	Cloudy. Rain & drzl mid am. Fog late pm. Ocnl fair pm	
THU	30	1012.0	18.0	13.3	15.7	11.0	16.5	<u>16.3</u>	260	18	16.8	32	NIL	12.2	Fair ocnl cloudy	
FRI	31	1016.4	18.4	14.1	16.3	12.3	16.8	<u>16.3</u>	270	11	11.2	20	NIL	11.6	Cloudy bec fair	
MEAN		1015.7	17.7	13.3	15.5	11.1	16.7	15.8	W	11.9	11.8	TOTAL	43.8	199.1		
30 YEAR AVE. 1961-90		1018.8	18.9	12.9	15.9	11.0	17.4	16.0	W	10.9	10.3	////	37.3	251.2		
EXTREMES ARE IN BOLD TYPE	NUMBER OF DAYS WITH	RAIN ≥0.2mm	WET ≥1.0mm	SNOW/ SLEET	HAIL	THUNDER	LGHTNG	AIR FROST	GROUND FROST	FOG	FOG 9a.m.	GALE	NO SUN	TOTALS FOR YEAR TO DATE		
		12	9	0	0	0	0	0	0	12	3	0	3			
RECORDS FROM JANUARY 1947															RAINFALL 444.6mm	SUNSHINE 1159.0
WETTEST DAY DAY/YEAR		59.0mm 6th/1969	DRIEST MONTH YEAR		6.6mm 1983	LOWEST MIN DAY/YEAR		8.3°C 8th/1954	WARMEST MNTH YEAR		19.4°C 1983	SUNNIEST MNTH YEAR		335.9hrs 1959	RAIN DAYS 101	SUNLESS DAYS 28
WETTEST MNTH DAY/YEAR		120.2mm 1960	HIGHEST MAX DAY/YEAR		31.7°C 1st/1952	LOWEST GRASS DAY/YEAR		1.0°C 7th/1996	COLDEST MNTH YEAR		13.8°C 1954	DULLEST MNTH YEAR		167.7hrs 1972	WET DAYS 80	

METEOROLOGICAL OBSERVATIONS GUERNSEY AIRPORT. AUGUST 1998

DAY	DATE	BAROMETER	TEMPERATURE deg C						WIND				RAIN	SUN	WEATHER			
		mb	AIR			GRASS	SOIL		DIR'N	SPEED(knots)								
		at 9a.m.	MAX	MIN	MEAN	MIN	30cm	100cm	9a.m.	9a.m.	MEAN	MAX	mm	hrs				
SAT	1	1018.1	<u>17.4</u>	12.1	14.8	8.0	17.0	<u>16.2</u>	310	06	6.0	12	NIL	8.3	Fine, dew bec fair ocnl cloudy			
SUN	2	1022.5	18.7	12.5	15.6	6.5	17.1	16.4	040	08	6.3	19	0.1	13.0	Cloudy bec fair, dew. Shallow fog patches early. Fine evng			
MON	3	1024.8	17.8	12.6	15.2	7.4	17.2	16.3	220	09	11.3	29	2.0	<u>0.1</u>	Fair bec cloudy. Slt rain am. Rain & drzl mid pm, fog ocnl thick			
TUE	4	1027.9	18.5	14.1	16.3	12.9	17.0	16.3	340	12	10.5	22	NIL	13.8	Rain, drzl & thick fog early bec fair then fine. Dew late evng			
WED	5	<u>1033.4</u>	20.9	13.7	17.3	6.8	17.0	16.3	330	05	6.7	16	NIL	<u>14.3</u>	Fine, dew. Shallow fog patches early. Ocnl dry air early pm			
THU	6	1029.3	18.6	<u>10.9</u>	14.8	5.0	17.4	16.4	280	07	7.4	18	TR	13.6	Fine, dew. Shallow fog patches early. Cloudy spells am			
FRI	7	1025.1	21.0	13.0	17.0	7.2	17.4	16.4	340	04	<u>4.5</u>	10	NIL	12.5	Fine, dew. Shallow fog patches early. Cloudy spells am			
SAT	8	1019.2	21.2	13.4	17.3	8.1	18.0	16.5	010	07	7.5	17	NIL	13.9	Fine, dew. Fog patches early. Adj fog late am			
SUN	9	1016.8	21.9	14.7	18.3	9.3	18.1	16.6	030	07	7.6	19	NIL	13.7	Fine, dew. Haze			
MON	10	1015.6	<u>26.5</u>	<u>17.5</u>	<u>22.0</u>	11.2	18.5	16.7	200	<u>02</u>	4.7	12	TR	13.5	Fine, haze & dew. Shallow fog bec fair. Thick fog late pm			
TUE	11	1019.1	22.2	14.9	18.6	13.8	<u>19.2</u>	16.9	330	05	6.7	14	TR	12.7	Thick fog bec fair or fine			
WED	12	1020.1	19.6	14.9	17.3	13.0	19.1	17.0	310	10	11.2	21	NIL	10.8	Fair or fine, dew. Ocnl cloudy am, slt rain. Mainly fair			
THU	13	1022.0	19.0	12.2	15.6	7.9	18.3	<u>17.2</u>	290	08	9.0	18	NIL	11.9	Fair, dew early			
FRI	14	1017.1	19.2	13.3	16.3	8.5	18.0	<u>17.2</u>	220	06	6.9	16	1.1	12.7	Fair or fine, dew early & late			
SAT	15	1017.0	18.9	13.7	16.3	12.3	18.2	<u>17.2</u>	350	11	8.6	19	NIL	10.7	Fair, dew bec cloudy. Rain, drzl & fog patch mid am bec fair			
SUN	16	1024.2	18.9	12.0	15.5	5.0	17.7	<u>17.2</u>	330	05	6.7	14	NIL	13.3	Fine, dew. Shallow fog patch early bec fair. Fine pm			
MON	17	1020.7	19.5	13.3	16.4	10.0	17.9	17.1	230	06	9.8	22	TR	5.9	Fine, dew bec cloudy. Fair late am. Cloudy evng. Drzl & fog patch			
TUE	18	1021.0	19.7	13.9	16.8	12.7	18.2	<u>17.2</u>	010	05	6.7	14	NIL	13.3	Drzl early bec mainly fair			
WED	19	1022.4	20.6	13.6	17.1	6.1	18.0	<u>17.2</u>	290	03	5.7	13	0.2	12.8	Fine,dew. Ocnl fair. Dew late evng			
THU	20	1020.4	19.5	13.6	16.6	10.1	18.0	17.1	270	11	12.8	32	2.4	2.5	Fine, dew bec cloudy. Ocnl fair. Slt rain evng. rain & drzl later			
FRI	21	<u>1010.6</u>	19.6	15.4	17.5	<u>14.3</u>	17.9	<u>17.2</u>	270	<u>20</u>	<u>19.0</u>	<u>37</u>	0.3	2.9	Rain, drzl & mist. Fog patches early. Ocnl fair			
SAT	22	1013.8	<u>16.8</u>	13.7	15.3	13.7	17.8	<u>17.2</u>	250	09	9.4	19	0.2	2.6	Cloudy. Rain, drzl & fog patches. Fine by mid pm. Dew later			
SUN	23	1018.0	17.7	11.0	<u>14.4</u>	5.4	16.9	<u>17.2</u>	230	14	14.4	36	<u>5.9</u>	0.3	Fine, dew bec cloudy. Slt drzl. Rain evng. Tempo hvy rain			
MON	24	1016.2	18.7	13.4	16.1	12.6	16.9	17.0	300	16	12.6	28	NIL	10.8	Cloudy bec fair. Fine pm			
TUE	25	1022.4	18.1	11.2	14.7	5.5	<u>16.7</u>	16.9	280	09	8.8	23	0.7	9.8	Fine, dew bec fair. Cloudy mid pm			
WED	26	1018.2	19.4	14.5	17.0	12.5	17.2	16.9	290	10	10.8	20	TR	1.9	Cloudy, ocnl rain early. Ocnl fair pm			
THU	27	1024.6	17.5	11.8	14.7	10.1	17.2	16.9	050	11	8.7	19	NIL	12.6	Cloudy bec fine. Ocnl fair. Dry air			
FRI	28	1025.7	18.5	11.0	14.8	<u>4.5</u>	<u>16.7</u>	16.9	310	05	5.6	14	NIL	12.5	Fine, dew. Shallow fog patches. Ocnl fair			
SAT	29	1024.2	19.2	12.4	15.8	6.3	16.8	16.8	160	05	4.7	11	NIL	11.4	Fine, shallow fog mid am. Bec fair. Ocnl dry air pm. Fine evng			
SUN	30	1020.5	20.8	14.5	17.7	11.9	17.1	16.8	130	07	8.0	21	NIL	12.3	Fair bec fine late am. Dry air			
B.HOL	31	1013.5	22.1	16.2	19.2	14.0	17.5	16.8	120	12	11.0	25	TR	2.1	Fine bec mainly cloudy. Ocnl light rain pm. Ocnl dry air			
MEAN		1020.8	19.6	13.4	16.5	9.4	17.6	16.8	W	8.2	8.7	TOTAL	12.9	302.5				
30 YEAR AVE. 1961-90		1017.6	19.0	13.4	16.2	11.0	17.5	16.7	W	10.9	10.3	////	45.6	225.9				
EXTREMES ARE IN BOLD TYPE	NUMBER OF DAYS WITH	RAIN ≥0.2mm	WET ≥1.0mm	SNOW/ SLEET	HAIL	THUNDER	LIGHTNING	AIR FROST	GROUND FROST	FOG	FOG 9a.m.	GALE	NO SUN	TOTALS FOR YEAR TO DATE				
		8	4	0	0	0	0	0	0	9	0	0	0					
RECORDS FROM JANUARY 1947															RAINFALL	457.5mm	SUNSHINE	1461.5hrs
WETTEST DAY DAY/YEAR		55.8mm 22nd/1973	DRIEST MONTH YEAR		3.8mm 1955	LOWEST MIN DAY/YEAR		9.2°C 28th/1986	WARMEST MNTH YEAR		19.1°C 1995	SUNNIEST MNTH YEAR		323.0hrs 1955	RAIN DAYS	109	SUNLESS DAYS	28
WETTEST MNTH DAY/YEAR		122.0mm 1951	HIGHEST MAX DAY/YEAR		32.8°C 3rd/1990	LOWEST GRASS DAY/YEAR		0.8°C 11th/1981	COLDEST MNTH YEAR		14.3°C 1956	DULLEST MNTH YEAR		139.2hrs 1992	WET DAYS	84		

METEOROLOGICAL OBSERVATIONS GUERNSEY AIRPORT. SEPTEMBER 1998

DAY	DATE	BAROMETER	TEMPERATURE deg C						WIND				RAIN	SUN	WEATHER			
		mb	AIR			GRASS	SOIL		DIR'N	SPEED(knots)								
		at 9a.m.	MAX	MIN	MEAN	MIN	30cm	100cm	9a.m.	9a.m.	MEAN	MAX	mm	hrs				
TUE	1	1010.7	<u>21.5</u>	15.5	<u>18.5</u>	13.8	17.6	16.8	270	08	6.9	18	0.6	3.4	Slt rain early. Thick fog mid am. Ocnl fair pm. Fog patches evng			
WED	2	1013.5	16.7	13.7	15.2	11.5	<u>17.8</u>	16.9	090	<u>03</u>	7.0	23	<u>29.2</u>	NIL	Cloudy. Rain by mid am. Mod rain late am. Tempo hvy rain evng			
THU	3	1015.3	18.3	13.9	16.1	13.1	16.8	<u>17.0</u>	290	12	10.0	21	0.6	10.1	Rain early bec fair ocnl cloudy. Fine evng. Cloudy later			
FRI	4	1007.4	16.7	13.9	15.3	<u>6.5</u>	16.9	16.8	150	12	10.0	22	5.7	NIL	Rain mid am. Mod rain late am. Tempo hvy rain early pm. Cloud			
SAT	5	1006.3	18.7	15.5	17.1	14.0	16.6	16.8	250	17	15.5	30	0.5	7.6	Fair to cloudy. Ocnl shwrs			
SUN	6	1008.6	19.2	15.2	17.2	13.0	16.9	16.7	160	13	10.6	24	TR	2.0	Cloudy. Slt rain early pm. Rain, drzl & fog patch evng. Shrs late			
MON	7	1002.2	19.7	15.5	17.6	13.5	17.1	16.7	190	11	13.0	26	5.2	5.9	Fine, dew bec fair. Gradu cloudy pm, slt rain			
TUE	8	1003.4	18.7	14.8	16.8	13.7	17.4	16.8	250	19	15.5	31	9.5	6.8	Cloudy, shwrs bec rain. Fog patch. Fair bec fine pm. Rain, fog			
WED	9	999.5	19.5	15.5	17.5	<u>15.0</u>	17.5	16.7	220	17	17.8	34	6.0	5.8	Slt rain & drzl early bec fair. Ocnl cloudy. Shwrs evng			
THU	10	1003.4	18.0	14.2	16.1	14.0	17.4	16.7	250	15	17.4	30	5.1	9.0	Mainly cloudy early. Hvy shwr mid am. Fair. Shwrs late evng			
FRI	11	1003.7	15.4	11.2	13.3	10.2	16.7	16.8	280	11	12.3	26	0.8	2.0	Cloudy. Shwrs mid am. Lghtng. Hvy shwr. Rain late am. Shwrs			
SAT	12	1002.0	<u>14.7</u>	10.2	<u>12.5</u>	8.9	15.7	16.7	260	<u>21</u>	16.6	37	17.3	6.2	Fair bec cloudy. Hvy shwr, TS late am, fog patch. Fair pm			
SUN	13	1002.5	16.0	<u>9.6</u>	12.8	8.2	14.6	16.5	340	17	18.3	<u>43</u>	1.3	10.0	Shwrs early, hvy rain. Cloudy bec fair. Fine evng. Shwrs later			
MON	14	1007.3	16.5	11.0	13.8	9.0	<u>14.5</u>	16.2	310	<u>21</u>	18.4	34	6.7	8.7	Fair, ocnl cloudy. Shwr mid am. Fair			
TUE	15	1008.9	17.4	12.7	15.1	10.5	14.7	16.0	270	19	17.8	31	TR	0.3	Cloudy. Rain mid am. Hvy rain, fog patches. Cloudy			
WED	16	1015.7	16.7	12.5	14.6	9.8	15.2	16.0	290	16	17.0	29	NIL	8.3	Cloudy bec fair, ocnl cloudy. Cloudy late pm			
THU	17	1018.3	17.4	13.5	15.5	12.4	15.5	<u>15.8</u>	320	07	8.3	26	TR	5.8	Cloudy. Fair mid am, ocnl cloudy. Slt shwr early pm			
FRI	18	1023.9	18.8	13.5	16.2	8.5	15.6	<u>15.8</u>	200	06	<u>5.1</u>	13	NIL	10.2	Fair or fine, dew. tempo cloudy am. Fine pm. Dew later			
SAT	19	1029.6	20.6	14.2	17.4	8.6	16.0	<u>15.8</u>	130	07	7.0	16	NIL	<u>10.9</u>	Fine, dew bec fair. Fine pm. Tempo dry			
SUN	20	<u>1032.2</u>	20.7	14.5	17.6	12.7	16.2	15.9	100	08	11.4	24	NIL	9.6	Fine. Tempo cloudy mid pm. Haze			
MON	21	1030.2	18.6	14.6	16.6	12.4	16.4	15.9	070	16	15.3	31	NIL	9.7	Fair, mist & dew. Fine, fair pm			
TUE	22	1023.1	18.7	14.5	16.6	12.2	16.1	15.9	070	15	15.3	30	NIL	10.6	Fine, dew early. Haze evng			
WED	23	1017.3	19.8	13.7	16.8	10.8	16.0	16.0	090	10	9.5	21	NIL	10.2	Cloudy, haze early bec fine. Haze evng			
THU	24	1013.2	20.2	<u>15.7</u>	18.0	13.0	16.2	16.0	130	05	7.2	17	0.6	4.0	Fair, haze bec cloudy. Tempo mist am, Ocnl fair pm. Shwr evng			
FRI	25	1006.9	16.5	15.0	15.8	12.7	16.6	16.0	120	07	8.9	23	7.7	0.1	Cloudy, mist or haze. Rain late am & pm. Fair or fine later, dew			
SAT	26	997.1	18.0	15.0	16.5	12.9	16.2	16.0	130	12	9.7	26	0.1	0.6	Fine, dew bec cloudy. Hvy rain mid am. Cloudy			
SUN	27	999.3	17.3	12.5	14.9	8.6	16.2	16.0	330	11	10.6	22	4.5	2.2	Fine, dew bec fair to cloudy. Gradu rain pm. Hvy rain evng			
MON	28	1006.8	16.9	14.4	15.7	13.0	16.1	16.0	300	08	10.6	19	NIL	1.1	Cloudy, mist. Tempo fair mid am. Haze			
TUE	29	1005.9	15.4	12.2	13.8	6.8	16.0	16.0	110	<u>03</u>	9.4	36	5.1	0.2	Cloudy, haze. Tempo fair, mist early. Slt shwr am. Rain evng			
WED	30	<u>991.5</u>	16.0	13.6	14.8	12.2	15.7	16.0	180	<u>21</u>	<u>19.3</u>	38	9.3	3.2	Cloudy. Ocnl fair am. Shwrs pm, tempo hvy shwrs			
MEAN		1010.2	18.0	13.7	15.8	11.4	16.3	16.3	W	12.3	12.4	TOTAL	115.8	164.5				
30 YEAR AVE. 1961-90		1017.7	17.5	12.5	15.0	9.8	15.9	16.0	W	11.8	11.3	////	64.1	168.4				
EXTREMES ARE IN BOLD TYPE	NUMBER OF DAYS WITH	RAIN ≥0.2mm	WET ≥1.0mm	SNOW/ SLEET	HAIL	THNDER	LGHTNG	AIR FROST	GROUND FROST	FOG	FOG 9a.m.	GALE	NO SUN	TOTALS FOR YEAR TO DATE				
		18	13	0	1	1	2	0	0	5	1	0	2					
RECORDS FROM JANUARY 1947															RAINFALL	573.3mm	SUNSHINE	1626.0hrs
WETTEST DAY	43.7mm	DRIEST MONTH		6.9mm	LOWEST MIN		5.8°C	WARMEST MNTH		17.5°C	SUNNIEST MNTH		266.5hrs	RAIN DAYS	127	SUNLESS DAYS	30	
DAY/YEAR	20th/1949	YEAR		1997	DAY/YEAR		28th/1974	YEAR		1949	YEAR		1959	WET DAYS	97			
WETTEST MNTH	194.5mm	HIGHEST MAX		30.6°C	LOWEST GRASS		-1.0°C	COLDEST MNTH		12.8°C	DULLEST MNTH		104.5hrs					
DAY/YEAR	1952	DAY/YEAR		2nd/1961	DAY/YEAR		23rd/1979	YEAR		1986	YEAR		1956					

METEOROLOGICAL OBSERVATIONS GUERNSEY AIRPORT. OCTOBER 1998

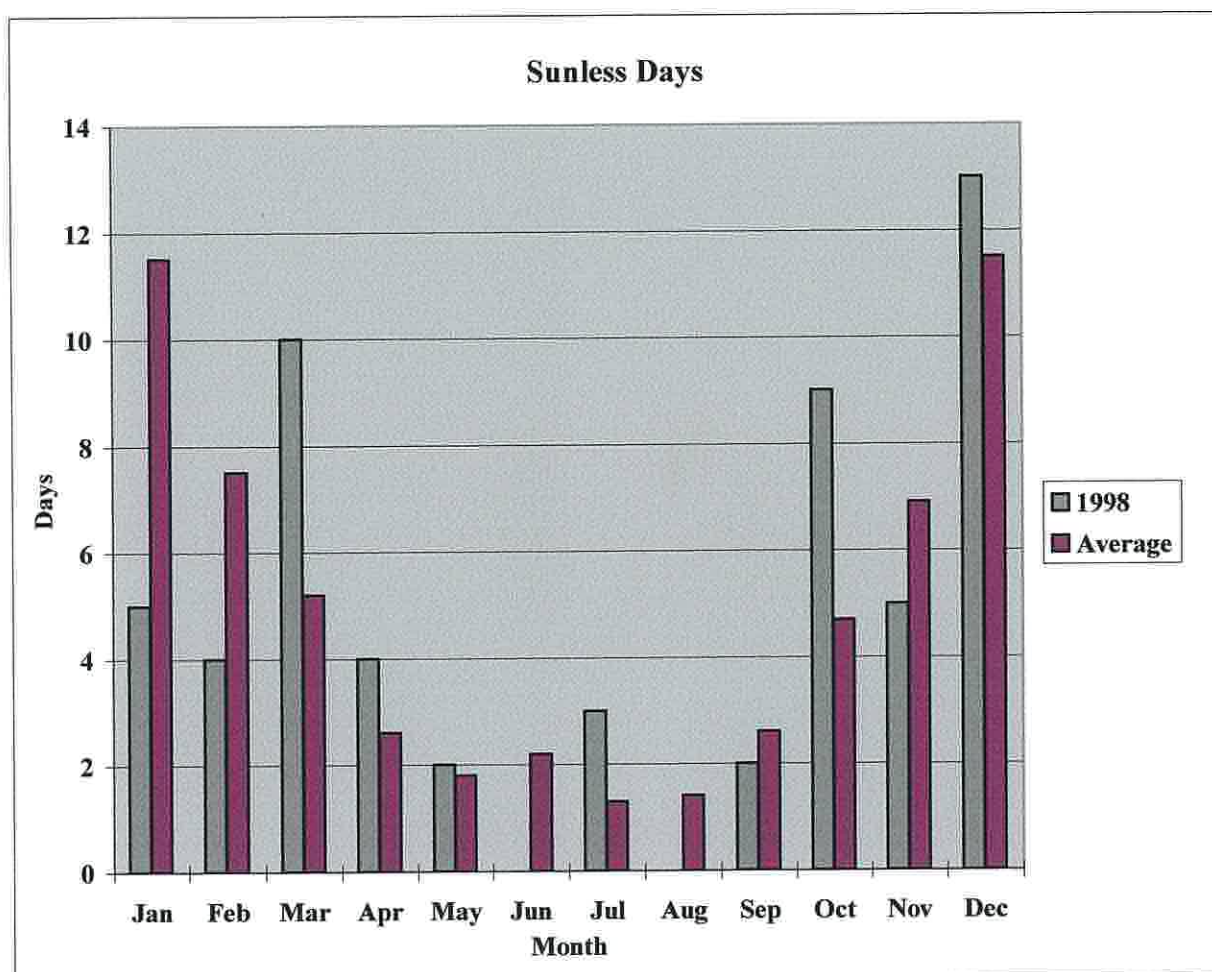
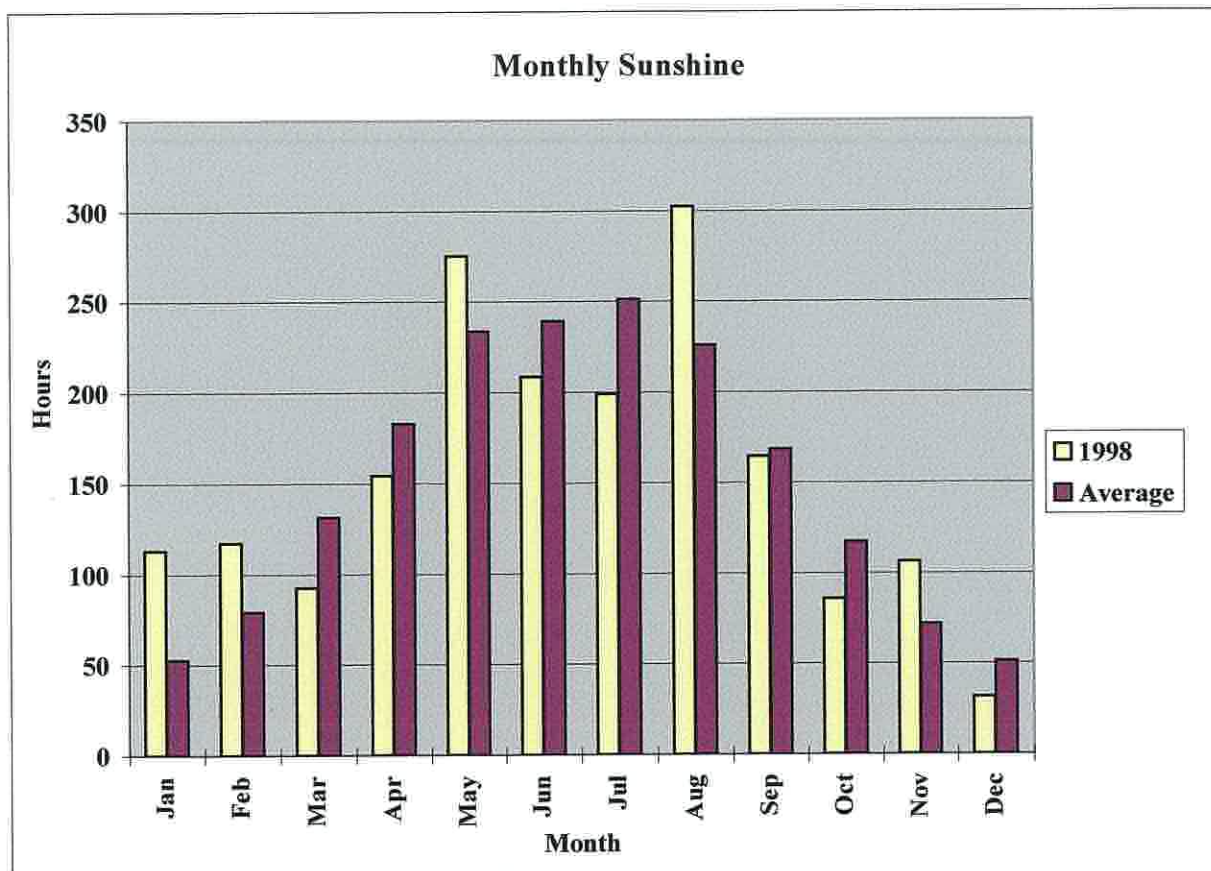
DAY	DATE	BAROMETER	TEMPERATURE deg C						WIND				RAIN	SUN	WEATHER
		mb	AIR			GRASS	SOIL		DIR'N	SPEED(knots)					
		at 9a.m.	MAX	MIN	MEAN	MIN	30cm	100cm	9a.m.	9a.m.	MEAN	MAX	mm	hrs	
THU	1	<u>995.3</u>	<u>17.9</u>	13.7	15.8	12.5	<u>15.5</u>	<u>15.9</u>	120	09	11.5	26	5.9	4.4	Cloudy, shwrs. Fair early pm. Shwr, slt Tstorm late pm
FRI	2	1010.9	16.3	12.7	14.5	12.0	<u>15.5</u>	<u>15.8</u>	030	14	10.1	24	0.2	5.7	Tstorm early, hvy rain. Shwrs bec ocnl fair. Shwrs later
SAT	3	1015.2	13.3	9.2	11.3	8.2	<u>15.2</u>	15.8	010	07	5.8	18	NIL	5.0	Cloudy bec ocnl fair. tempo dry air pm
SUN	4	1006.7	<u>11.8</u>	8.8	10.3	1.6	14.4	15.7	-	<u>00</u>	5.1	18	8.7	NIL	Cloudy. Hvy shwr late am. Rain late pm
MON	5	1008.2	12.7	9.0	10.9	7.4	13.6	15.5	060	13	8.5	24	3.7	1.1	Rain early, ocnl hvy. Shwrs. Tempo fair pm. Hvy shwrs later
TUE	6	1013.7	14.3	8.7	11.5	6.3	13.3	15.3	070	07	8.2	19	4.4	1.9	Cloudy. Shwr am. Tempo fair late am. Shwrs evng, hvy shwr
WED	7	1020.5	13.3	10.5	11.9	8.1	13.3	15.1	010	11	11.3	26	TR	0.2	Fair bec cloudy. Slt shwrs
THU	8	<u>1026.9</u>	12.6	10.7	11.7	9.6	13.2	15.0	350	18	17.3	32	TR	1.3	Cloudy tempo fine early. Slt shwrs pm
FRI	9	1025.2	13.5	11.2	12.4	10.5	13.0	14.8	350	05	10.3	25	9.9	0.7	Cloudy. Slt shwrs am. Rain & drzl evng, mist
SAT	10	1013.9	15.4	11.8	13.6	9.9	13.5	14.6	320	11	12.3	24	3.4	3.4	Rain & drzl early. Shwrs. Fair pm. Cloudy later
SUN	11	1013.1	16.4	11.6	14.0	8.9	13.5	14.5	260	22	17.5	35	0.6	3.2	Cloudy. Rain & drzl mid am. Bec fair pm
MON	12	1019.9	14.7	11.1	12.9	10.1	13.7	14.5	310	17	13.1	27	0.9	6.7	Cloudy, shwrs bec fair. Dry air midday. Cloudy by evng
TUE	13	1020.1	15.3	11.1	13.2	8.6	13.5	14.5	210	15	15.1	30	7.4	NIL	Cloudy. Rain mid am. Rain or drzl, ocnl fog.
WED	14	1019.2	15.6	13.0	14.3	<u>14.3</u>	14.2	14.3	240	17	14.5	30	0.9	NIL	Cloudy. Rain mid am bec drzl. Ocnl fog pm. Fair late evng
THU	15	1024.7	15.5	8.5	12.0	3.3	13.9	14.5	290	03	<u>4.2</u>	11	0.2	4.5	Fair or fine, dew. Ocnl cloudy. Fair evng
FRI	16	1015.7	15.7	11.0	13.4	6.2	13.8	14.5	200	12	14.3	34	10.5	NIL	Cloudy. Drzl & fog mid am. Ocnl drzl
SAT	17	1005.8	15.2	10.5	12.9	9.6	14.0	14.3	280	18	18.1	37	1.1	6.8	Cloudy, rain early. Hvy rain mid am bec fair, shwrs. Fine later
SUN	18	1020.2	14.3	7.5	10.9	<u>0.8</u>	13.2	14.3	120	07	6.2	19	0.6	5.9	Fine,slt dew bec fair. Funnel clouds pm. Lghtng later
MON	19	1020.5	13.6	9.5	11.6	6.2	12.7	14.3	290	14	9.9	23	2.1	<u>7.4</u>	Mainly fair, shwrs. Hvy shwrs early pm
TUE	20	1022.6	14.9	9.1	12.0	5.7	12.4	14.2	220	10	14.0	33	0.7	1.5	Fair bec cloudy. Tempo fair pm
WED	21	1012.6	15.7	12.9	14.3	11.1	12.8	14.0	200	18	17.2	37	6.6	NIL	Cloudy, rain & drzl. Ocnl fog
THU	22	1018.0	16.5	<u>15.2</u>	<u>15.9</u>	13.4	13.7	13.8	200	16	15.1	34	12.1	0.1	Cloudy, slt rain early & pm
FRI	23	1012.2	16.0	11.4	13.7	13.5	14.3	13.8	220	15	19.5	36	9.3	2.1	Cloudy, ocnl hvy rain early. Bec fair pm
SAT	24	1005.5	15.7	11.3	13.5	8.4	13.7	13.7	180	<u>29</u>	24.2	<u>56</u>	<u>33.1</u>	NIL	Fine bec cloudy. Rain mid am, ocnl hvy rain. Gale evng, shwrs
SUN	25	1003.9	14.1	10.1	12.1	8.4	13.0	14.1	270	23	22.4	44	6.0	6.9	Cloudy bec fair, shwrs. Hvy shwr pm
MON	26	1013.0	13.4	9.3	11.4	6.6	12.4	14.0	290	17	18.7	36	0.3	5.6	Fair, shwrs. Hvy shwr early. Cloudy late pm
TUE	27	1014.4	15.0	11.9	13.5	8.1	12.4	13.8	270	27	<u>25.0</u>	43	4.6	NIL	Cloudy. Slt rain am. Rain & drzl by evng
WED	28	1007.9	15.5	11.8	13.7	13.1	13.3	13.7	270	<u>29</u>	24.2	46	8.3	NIL	Cloudy, rain & drzl. Rain evng. Hvy rain later
THU	29	1018.9	13.0	<u>7.1</u>	<u>10.1</u>	3.2	12.7	13.6	300	20	22.1	45	9.8	7.1	Cloudy. Hvy shwr, hail & Tstorm mid am. Fair. Hvy shwrs evng
FRI	30	1020.6	13.4	9.7	11.6	7.1	<u>12.0</u>	13.7	280	22	19.9	43	8.4	4.2	Hvy shwrs early bec fair, shwrs. Cloudy late pm
SAT	31	1012.6	14.5	10.5	12.5	7.4	<u>12.0</u>	<u>13.4</u>	230	20	20.9	44	14.4	NIL	Cloudy, rain ocnl hvy am. Rain & drzl, mist
MEAN		1014.8	14.7	10.7	12.7	8.4	13.5	14.5	W	15.0	14.7	TOTAL	174.1	85.7	
30 YEAR AVE. 1961-90		1016.4	14.7	10.5	12.6	8.0	13.3	14.2	W	12.6	12.5	////	84.9	117.2	
EXTREMES ARE IN BOLD TYPE	NUMBER OF DAYS WITH	RAIN ≥0.2mm	WET ≥1.0mm	SNOW/ SLEET	HAIL	THNDER	LGHTNG	AIR FROST	GROUND FROST	FOG	FOG 9a.m.	GALE	NO SUN	TOTALS FOR YEAR TO DATE	
		28	20	0	1	3	4	0	0	5	0	1	9		
RECORDS FROM JANUARY 1947															
WETTEST DAY	46.2mm	DRIEST MONTH	3.4mm	LOWEST MIN	3.9°C	WARMEST MNTH	14.7°C	SUNNIEST MNTH	176.4hrs	RAIN FALL 747.7mm SUNSHINE 1711.7hrs RAIN DAYS 155 SUNLESS DAYS 39 WET DAYS 117					
DAY/YEAR	7th/1987	YEAR	1978	DAY/YEAR	30th/1983	YEAR	1995	YEAR	1971						
WETTEST MNTH	233.9mm	HIGHEST MAX	23.3°C	LOWEST GRASS	-4.0°C	COLDEST MNTH	9.6°C	DULLEST MNTH	72.6hrs						
DAY/YEAR	1960	DAY/YEAR	4th,5th/1959	DAY/YEAR	30th/1983	YEAR	1974	YEAR	1968						

METEOROLOGICAL OBSERVATIONS GUERNSEY AIRPORT. NOVEMBER 1998

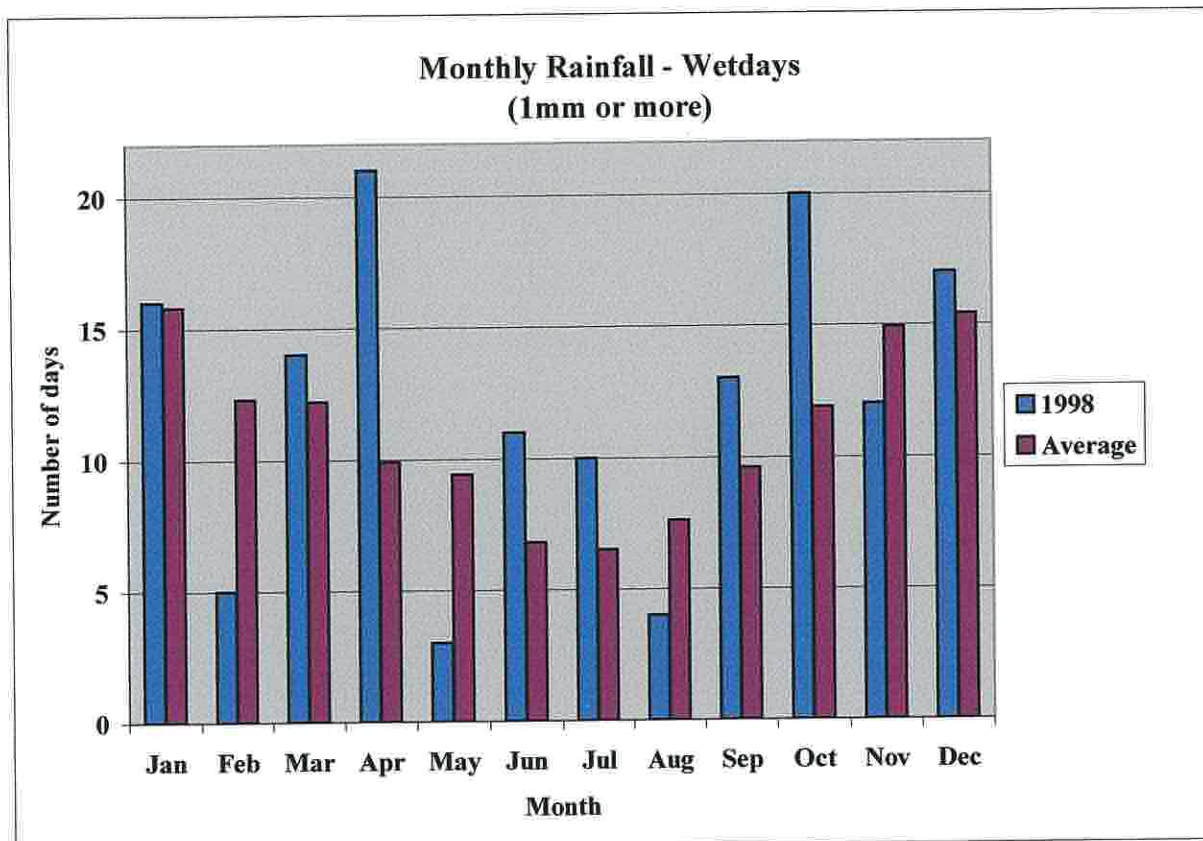
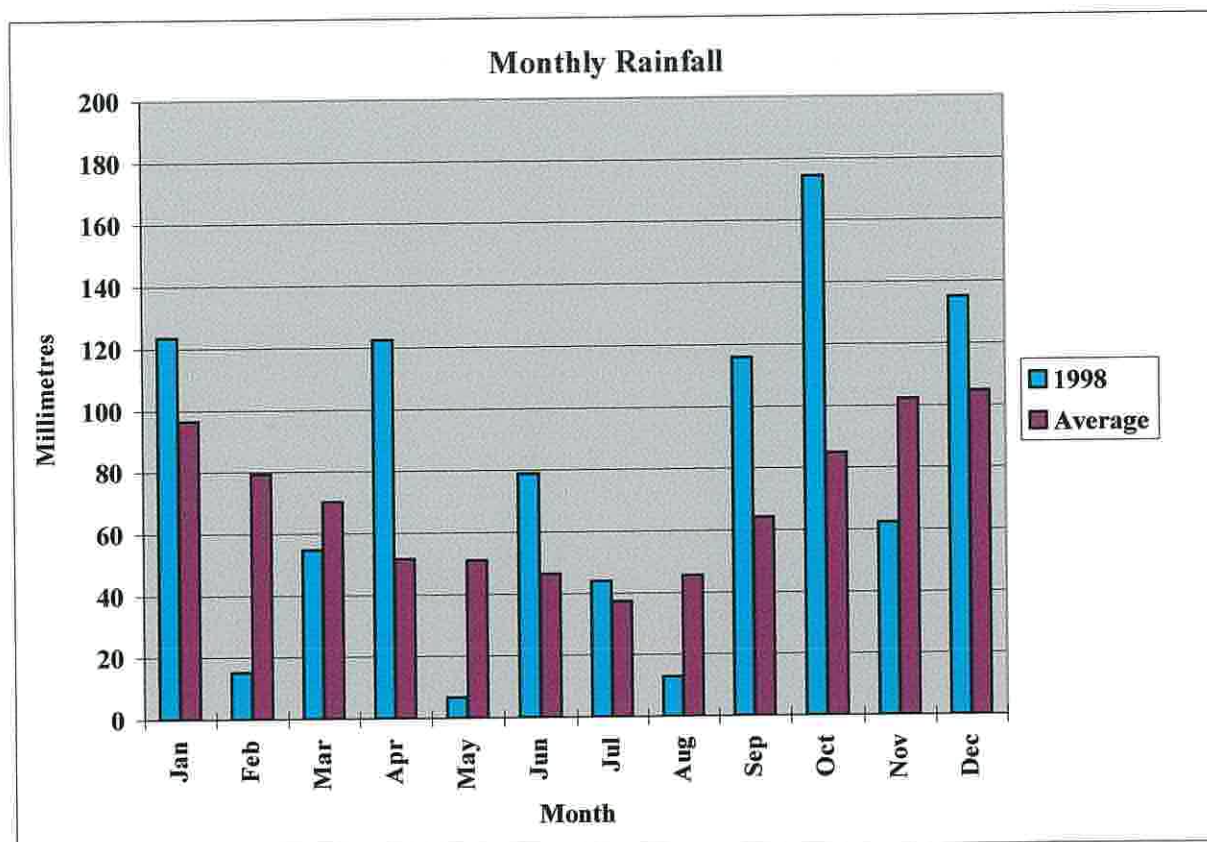
DAY	DATE	BAROMETER	TEMPERATURE deg C						WIND				RAIN	SUN	WEATHER		
			AIR			GRASS	SOIL		DIR'N	SPEED(knots)							
			mb														
		at 9a.m.	MAX	MIN	MEAN	MIN	30cm	100cm	9a.m.	9a.m.	MEAN	MAX	mm	hrs			
SUN	1	1010.2	13.8	8.3	11.1	6.0	12.1	13.4	340	10	11.2	30	NIL	8.2	Cloudy bec fair or fine. Ocnl dry air		
MON	2	1003.8	13.2	7.5	10.4	3.0	11.5	13.2	180	15	17.9	48	10.7	0.8	Ocnl fair early. Cloudy, tempo hvy rain early pm bec fair		
TUE	3	995.9	11.8	7.1	9.5	5.0	10.8	13.1	270	24	22.0	52	3.3	5.9	Shwrs early, lghtng. Hvy shwr. Fair ocnl cloudy, shwrs		
WED	4	1006.3	9.9	6.9	8.4	5.0	10.7	13.0	340	07	11.3	26	0.7	4.4	Cloudy bec fair. Ocnl cloudy, slt shwrs. Fine evng		
THU	5	1019.7	12.3	5.3	8.8	0.5	9.9	12.7	260	13	16.0	32	1.5	4.7	Fair ocnl cloudy. Shwrs. Lghtng early		
FRI	6	1026.4	13.8	9.5	11.7	7.2	10.2	12.5	280	09	10.5	30	TR	2.6	Fair ocnl cloudy, shwrs am. Cloudy pm		
SAT	7	1026.3	12.4	10.4	11.4	7.0	10.7	12.4	170	12	13.2	33	1.7	7.6	Cloudy bec fair or fine.		
SUN	8	1013.8	14.9	10.4	12.7	7.8	10.9	12.2	190	17	14.7	33	8.9	NIL	Cloudy. Rain mid am. Rain & drzl. Fog patches. Thick fog evng		
MON	9	1016.3	15.7	12.5	14.1	11.7	12.1	12.2	230	12	14.3	34	1.0	2.4	Cloudy, mist. Rain, ocnl hvy early. Ocnl fair		
TUE	10	1020.5	13.2	9.2	11.2	7.3	12.2	12.3	300	14	14.5	29	0.1	6.3	Cloudy, ocnl rain early bec fair. Slt shwrs, bec fine pm		
WED	11	1028.3	11.3	7.1	9.2	-1.0	11.0	12.4	150	03	11.2	39	6.1	0.8	Fine bec fair then mainly cloudy. Hvy rain late pm		
THU	12	1010.2	11.4	8.0	9.7	6.0	10.5	12.4	280	24	20.6	40	0.2	2.8	Rain & drzl early bec shwrs. Ice pellets. Hvy shwr. Ocnl fair		
FRI	13	1006.4	10.1	8.7	9.4	5.7	10.3	12.2	190	09	9.3	30	6.6	NIL	Cloudy, slt shwrs early. Rain mid am. Mod rain early pm		
SAT	14	1005.0	10.5	6.9	8.7	4.4	10.0	12.1	310	23	19.3	40	3.5	4.5	Rain early. Shwrs mid am. Hvy shwr evng, lghtng. Ice pellets		
SUN	15	1018.7	11.1	7.9	9.5	4.4	9.7	11.8	330	11	12.1	23	NIL	8.0	Fair or fine, ocnl cloudy early, shwrs. Fine pm		
MON	16	1029.2	8.3	3.6	6.0	-1.2	9.3	11.8	010	04	5.7	22	NIL	6.8	Fair bec fine. Dry air. Bec cloudy pm		
TUE	17	1029.7	8.7	5.7	7.2	-1.5	8.7	11.5	160	06	7.0	16	NIL	4.7	Cloudy ocnl fair early. Mainly fair pm		
WED	18	1028.1	7.0	4.7	5.9	2.9	8.5	11.4	140	09	9.0	19	NIL	6.6	Fair bec cloudy. Fair mid am. Fine pm, dry air		
THU	19	1027.2	8.5	4.7	6.6	0.9	7.8	11.2	190	09	10.5	20	TR	0.9	Fine bec mainly cloudy. Dry air. Slt rain late pm		
FRI	20	1031.3	8.0	6.8	7.4	5.3	7.8	10.9	150	10	10.3	22	TR	NIL	Cloudy, dry air early.		
SAT	21	1034.8	7.0	3.6	5.3	1.8	8.0	10.7	160	13	13.3	23	NIL	3.2	Cloudy, slt rain early. Ocnl fair am bec fine pm, dry air		
SUN	22	1025.5	5.5	3.2	4.4	1.1	7.1	10.6	160	14	12.7	25	NIL	1.8	Fine bec fair. Cloudy late am		
MON	23	1023.5	6.9	2.8	4.9	-0.1	6.9	10.4	110	06	5.8	16	0.3	6.7	Cloudy bec fair mid am. Fine late am, dry air		
TUE	24	1019.7	10.3	3.7	7.0	-2.5	6.7	10.2	210	12	11.8	28	10.3	0.1	Fine bec cloudy. Rain mid am bec mod rain. Drzl & fog patch pm		
WED	25	1017.8	11.1	7.9	9.5	4.4	7.7	9.9	330	11	12.5	25	0.4	4.0	Cloudy bec fair. Slt shwr late am, shwr pm. Fair		
THU	26	1024.9	11.7	8.7	10.2	5.2	8.0	9.8	280	11	15.5	32	TR	NIL	Fair or fine bec cloudy at dawn		
FRI	27	1023.0	11.9	10.8	11.4	9.0	8.9	9.9	280	12	12.8	24	4.3	NIL	Cloudy, slt rain mid am. Rain & drzl. Fog patches midday. Fair late		
SAT	28	1014.8	11.9	8.1	10.0	6.8	9.1	9.8	210	17	13.0	31	2.7	3.2	Cloudy. Drzl & fog mid am, tempo mod rain. Fair pm		
SUN	29	1021.1	9.4	7.4	8.4	4.0	9.0	10.0	340	12	12.7	23	NIL	4.1	Mainly fair, slt shwr am. Cloudy evening		
MON	30	1029.1	8.7	6.6	7.7	4.4	8.3	10.1	020	12	13.5	27	TR	5.0	Fair, ocnl cloudy am. Slt shwr. Cloudy late evening		
MEAN		1019.6	10.7	7.1	8.9	4.0	9.5	11.5	S	12.0	12.8	TOTAL	62.3	106.1			
30 YEAR AVE. 1961-90		1015.7	11.2	7.4	9.3	5.0	10.1	11.6	SW	14.0	14.1	////	102.1	71.7			
EXTREMES ARE IN BOLD TYPE	NUMBER OF DAYS WITH	RAIN ≥0.2mm	WET ≥1.0mm	SNOW/ SLEET	HAIL	THUNDER	LGHTNG	AIR FROST	GROUND FROST	FOG	FOG 9a.m.	GALE	NO SUN	TOTALS FOR YEAR TO DATE			
		16	12	0	3	0	3	0	5	4	1	0	5				
RECORDS FROM JANUARY 1947														RAINFALL	810.1mm	SUNSHINE	1817.8hrs
WETTEST DAY	39.4mm	DRIEST MONTH	16.1mm	LOWEST MIN		0.0°C	WARMEST MNTH		12.0°C	SUNNIEST MNTH		117.7hrs	RAIN DAYS	171	SUNLESS DAYS		44
DAY/YEAR	15th/1975	YEAR	1978	18th/1952, 19th/1985, 22nd, 28th/1993		YEAR	1994		YEAR	1988		YEAR	WET DAYS	129			
WETTEST MNTH	192.5mm	HIGHEST MAX	16.7°C	LOWEST GRASS		-5.6°C	COLDEST MNTH		7.7°C	DULLEST MNTH		35.9hrs					
DAY/YEAR	1965	DAY/YEAR	6th/1955	DAY/YEAR		29th/1987	YEAR		1993	YEAR		1994					

METEOROLOGICAL OBSERVATIONS GUERNSEY AIRPORT. DECEMBER 1998

DAY	DATE	BAROMETER	TEMPERATURE deg C						WIND				RAIN	SUN	WEATHER	
		mb	AIR			GRASS	SOIL		DIR'N	SPEED(knots)			mm	hrs		
		at 9a.m.	MAX	MIN	MEAN	MIN	30cm	100cm	9a.m.	9a.m.	MEAN	MAX				
TUE	1	1033.9	7.6	5.2	6.4	4.7	8.0	10.0	080	13	14.8	27	TR	0.9	Cloudy, slt rain early. Ocnl fair early pm. Slt rain late pm	
WED	2	1028.3	7.6	3.9	5.8	3.5	7.8	10.0	070	13	15.6	29	TR	0.1	Slt rain early bec fair. Mainly cloudy from mid am. Slt rain evng	
THU	3	1021.9	4.1	1.2	2.7	0.8	7.2	9.8	100	05	5.3	15	2.4	NIL	Slt rain early bec sleet. Snow grains mid am. Rain, drzl & haze	
FRI	4	1014.5	6.7	2.0	4.4	-0.9	6.8	9.7	360	11	8.6	23	1.0	0.6	Cloudy, ocnl rain am. Shwrs late am. Fair or fine evng bec cloudy	
SAT	5	1020.3	7.6	3.7	5.7	-0.3	6.6	9.4	320	11	12.9	29	TR	0.7	Cloudy. Shwr mid am. Tempo fair. Cloudy, slt shwrs	
SUN	6	1026.6	7.6	1.7	4.7	-6.0	6.4	9.3	-	00	3.7	20	NIL	5.8	Cloudy bec fair. Ocnl dry air pm. Fine late pm	
MON	7	1029.8	10.8	3.8	7.3	-4.5	5.7	9.1	170	07	7.3	19	2.6	NIL	Fine bec fair then cloudy. Rain & drzl late am	
TUE	8	1025.4	10.7	8.8	9.8	7.5	7.2	9.0	200	17	14.9	29	24.3	NIL	Cloudy, slt rain early bec mod & drzl. Mod rain evng	
WED	9	1020.9	12.2	8.7	10.5	8.5	8.0	9.0	260	07	8.0	23	0.3	1.3	Rain bec mist mid am. Ocnl fair. Fine, dew evng	
THU	10	1016.9	11.9	9.2	10.6	2.2	8.3	9.0	160	10	12.1	25	7.7	NIL	Fine, hvy dew bec cloudy. Rain late am, fog & hvy rain. Fair late	
FRI	11	1019.9	11.4	8.9	10.2	6.0	8.6	9.1	240	07	11.0	23	5.3	NIL	Fair, dew bec cloudy. Rain pm bec rain & drzl. Mist evng, fog	
SAT	12	1017.4	13.5	11.2	12.4	9.9	9.2	9.2	230	15	18.4	40	3.8	NIL	Rain, drzl & fog, ocnl mist. Fine late	
SUN	13	1031.9	12.0	9.6	10.8	5.9	9.8	9.4	240	07	13.1	26	TR	0.5	Fine, dew bec fair then mainly cloudy. Drzl & mist late pm	
MON	14	1028.4	12.7	11.2	12.0	8.5	9.8	9.5	190	12	11.5	21	0.6	1.6	Cloudy, mist & drzl. Ocnl fair. dew evng	
TUE	15	1027.2	12.0	10.7	11.4	9.5	10.1	9.7	210	11	10.0	20	1.0	NIL	Cloudy, mist. Drzl, thick fog mid am. Ocnl rain & drzl. Fog patches	
WED	16	1033.9	11.0	7.7	9.4	0.2	9.9	9.8	160	08	8.9	19	TR	0.3	Fair, dew. Shallow fog, bec cloudy. Tempo fair late am. Fog late	
THU	17	1024.8	10.0	6.5	8.3	4.3	9.2	9.9	170	08	11.3	22	0.9	NIL	Fog bec fine, dew. Cloudy, haze. Slt drzl pm. Tempo fair evng	
FRI	18	1020.4	11.3	7.5	9.4	6.4	9.2	9.8	230	07	15.4	42	4.4	4.6	Rain & drzl early bec fair. Ocnl fine am. Cloudy by evng. Hvy shwr	
SAT	19	1020.9	10.5	6.3	8.4	4.8	8.4	9.8	290	16	16.3	38	29.3	3.0	Fair, slt shwrs am. Bec cloudy pm, shwrs then rain evng. Hvy rain	
SUN	20	1011.6	6.7	2.8	4.8	2.4	8.1	9.8	020	19	16.7	40	0.1	2.4	Hvy rain early. Ocnl fair late am & pm	
MON	21	1026.4	7.9	1.2	4.6	-4.6	6.6	9.6	300	04	7.6	23	0.7	4.7	Fair, slt hoar frost mid am. Cloudy pm. Shwrs evng. rain & drzl late	
TUE	22	1024.1	9.5	6.8	8.2	5.7	7.2	9.4	220	13	14.3	27	1.9	0.1	Rain & drzl early. Ocnl rain & drzl pm. Tempo fair evng. Rain	
WED	23	1019.8	9.2	5.8	7.5	6.0	7.9	9.2	180	12	12.1	25	15.0	NIL	Cloudy, ocnl slt rain am. Rain pm, tempo hvy rain. Fair late	
THU	24	1024.1	10.2	3.8	7.0	-1.8	7.4	9.2	250	06	13.1	30	4.3	2.2	Fair, slt shwrs am. Cloudy pm. Rain & drzl evng. Mod rain, fog	
XMAS	25	1021.5	11.5	8.5	10.0	7.5	8.0	9.1	220	15	19.7	40	2.6	NIL	Cloudy. Rain & drzl early am & evng	
BDAY	26	1014.8	12.3	9.5	10.9	7.0	8.5	9.0	190	16	19.0	48	16.5	NIL	Cloudy, tempo fair early. Rain late am. Tempo hvy rain pm	
SUN	27	998.9	11.3	6.9	9.1	6.5	8.9	9.1	100	06	13.1	32	1.7	NIL	Cloudy, ocnl rain am. Slt shwrs pm. Ice pellets late pm	
B.HOL	28	1007.6	9.6	4.7	7.2	4.4	8.6	9.2	230	16	13.9	34	8.6	0.7	Mainly cloudy. Freq shwrs around midday. Hail & ice pellets	
TUE	29	1004.7	10.4	6.5	8.5	2.8	7.7	9.3	130	19	17.9	37	NIL	NIL	Fair bec cloudy.	
WED	30	1003.3	11.5	9.3	10.4	7.4	8.0	9.1	200	11	11.3	33	NIL	0.2	Cloudy. Tempo fair late am. Mist evng.	
THU	31	998.0	9.7	8.1	8.9	4.7	8.3	9.0	140	16	14.3	29	0.1	1.6	Cloudy, ocnl fair. Dew early. Slt drzl early pm. Slt shwr	
MEAN		1019.9	10.0	6.5	8.3	3.8	8.1	9.4	S	10.9	12.6	TOTAL	135.1	31.3		
30 YEAR AVE. 1961-90		1016.2	9.3	5.6	7.4	3.8	7.8	9.3	SW	14.8	14.9	////	104.7	51.1		
EXTREMES ARE IN BOLD TYPE	NUMBER OF DAYS WITH	RAIN ≥0.2mm	WET ≥1.0mm	SNOW/ SLEET	HAIL	THUNDER	LGHTNG	AIR FROST	GROUND FROST	FOG	FOG 9a.m.	GALE	NO SUN	TOTALS FOR YEAR TO DATE		
		21	17	1	3	0	1	0	6	7	0	0	13			
RECORDS FROM JANUARY 1947															RAINFALL 945.1mm	SUNSHINE 1849.1hrs
WETTEST DAY DAY/YEAR		42.2mm 30th/1978	DRIEST MONTH YEAR		28.1mm 1953	LOWEST MIN DAY/YEAR		-3.8°C 24th/1963	WARMEST MNTH YEAR		10.1°C 1953	SUNNIEST MNTH YEAR		98.5hrs 1962	RAIN DAYS 192	SUNLESS DAYS 57
WETTEST MNTH DAY/YEAR		227.2mm 1965	HIGHEST MAX DAY/YEAR		15.6°C 6th/1953	LOWEST GRASS DAY/YEAR		-8.9°C 29th/1964	COLDEST MNTH YEAR		4.6°C 1950	DULLEST MNTH YEAR		26.6hrs 1966	WET DAYS 146	

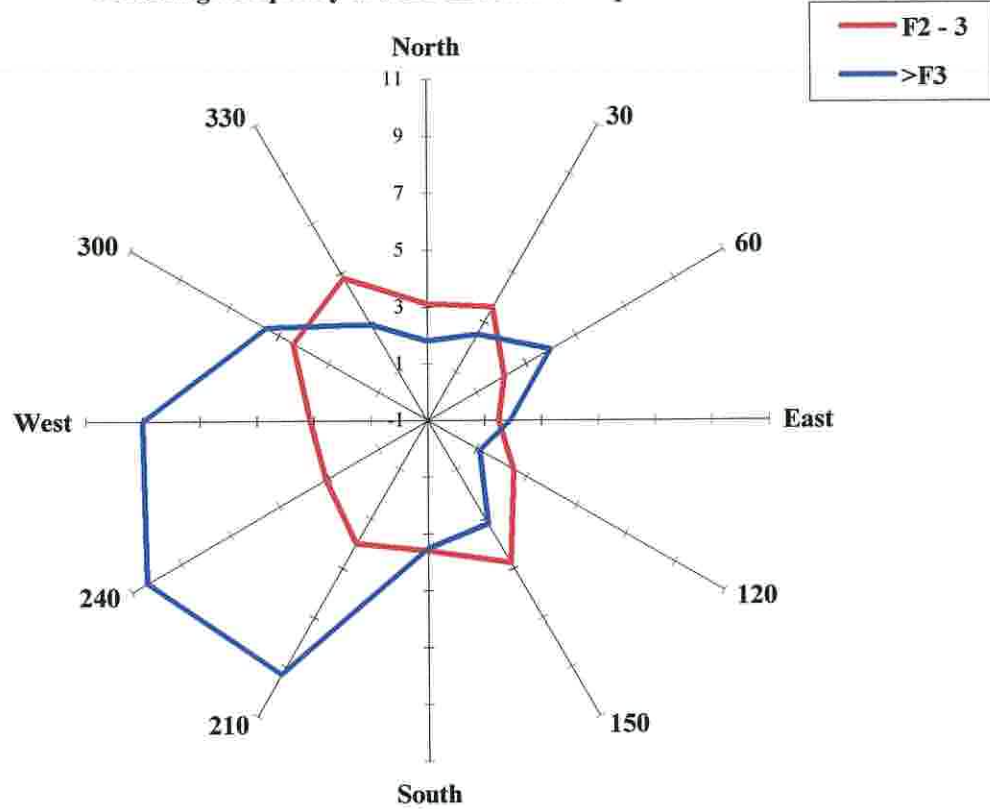


NB. 30 year averages are for the period 1961 - 1990

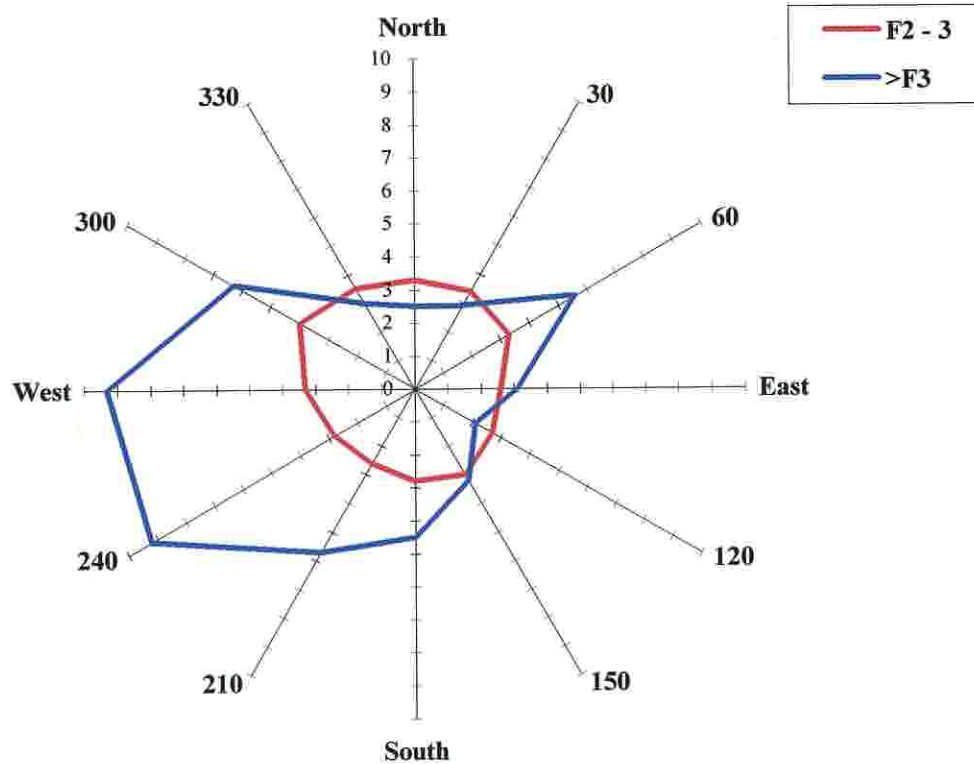


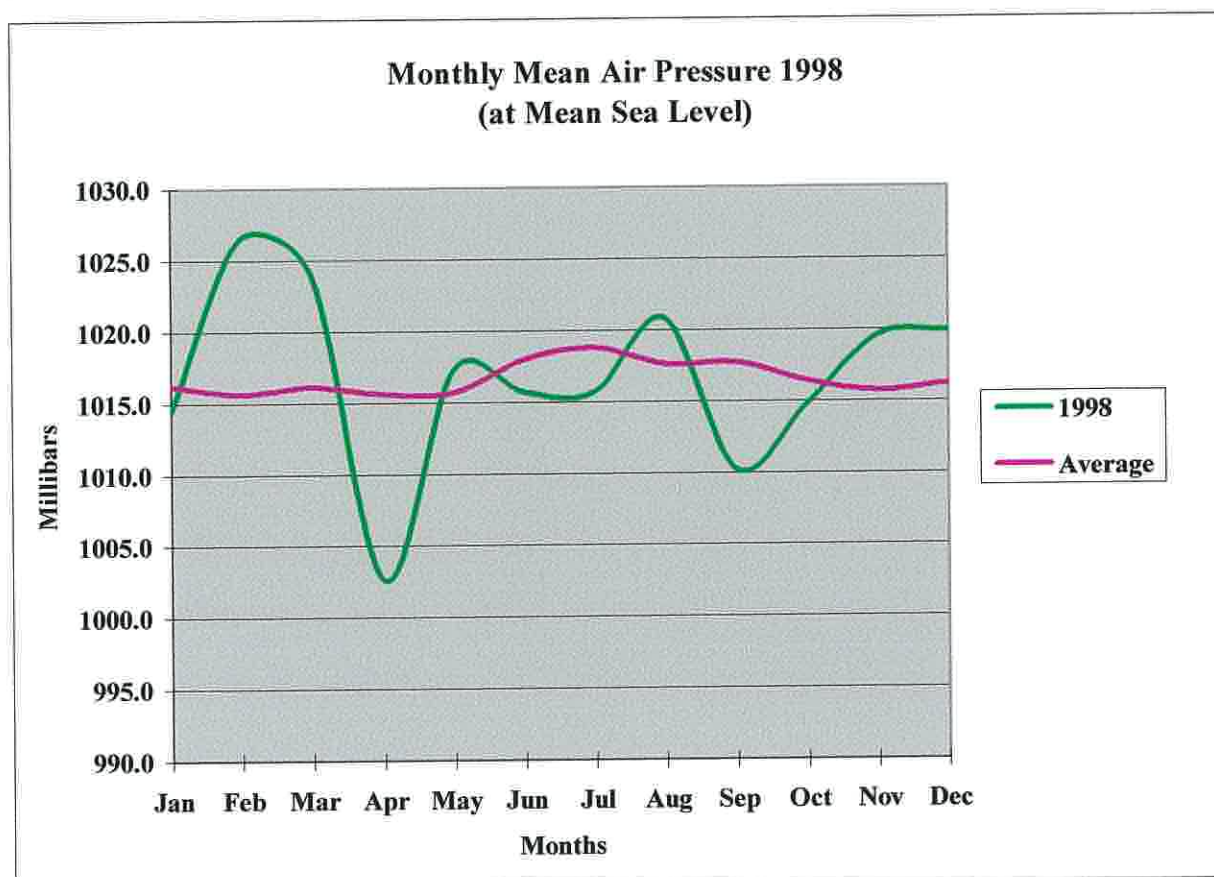
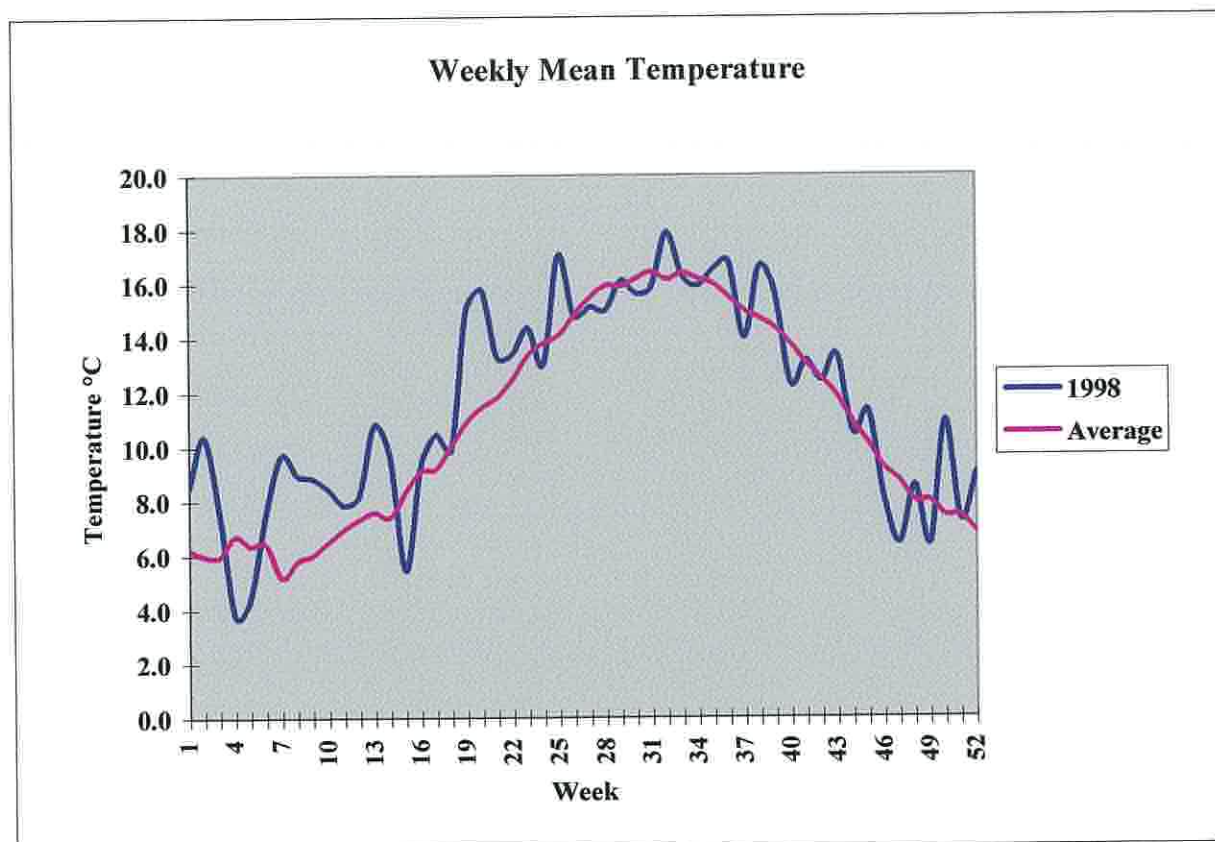
NB. 30 year averages are for the period 1961 - 1990

Percentage frequency of wind direction and speed - 1998

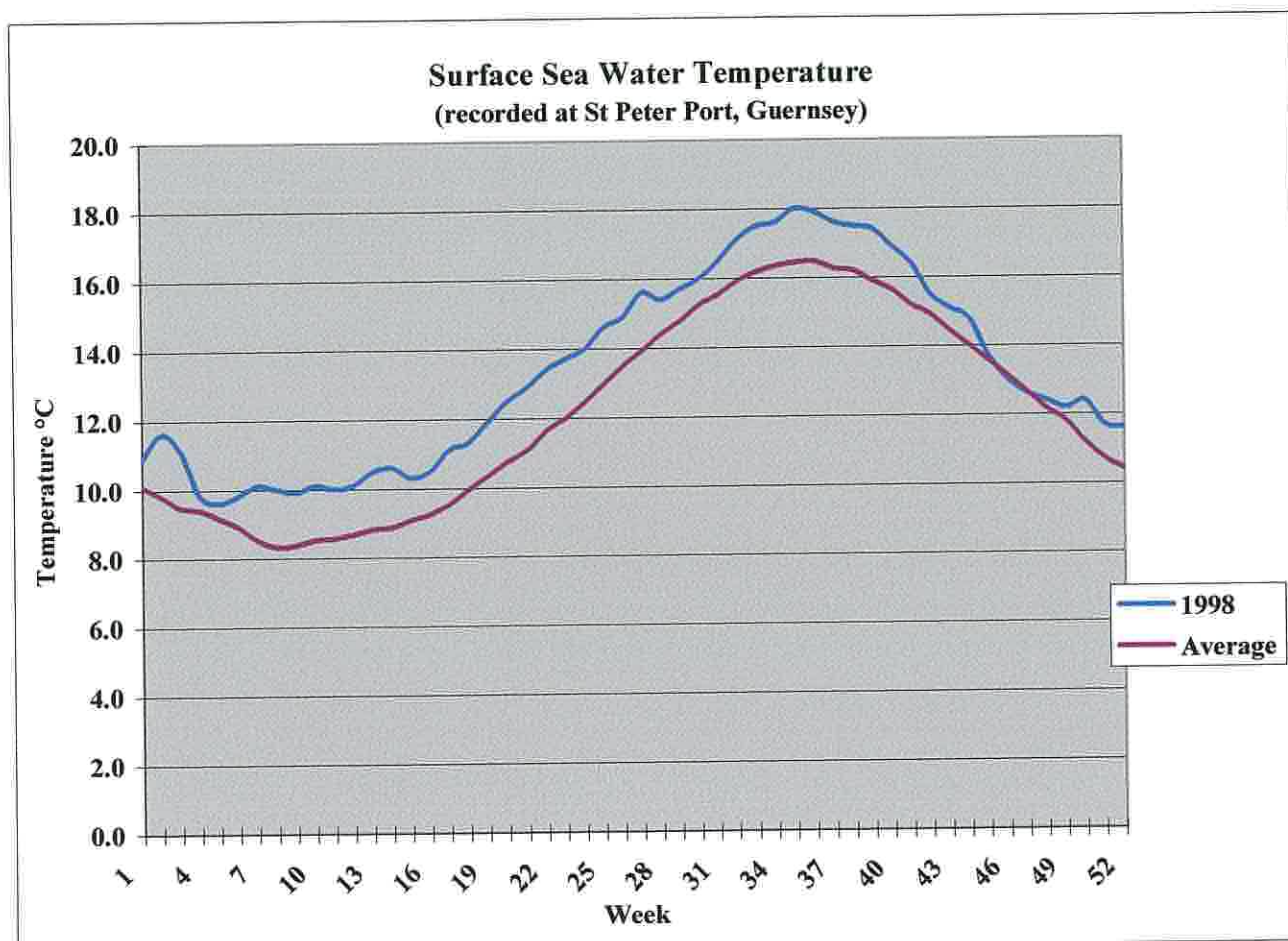
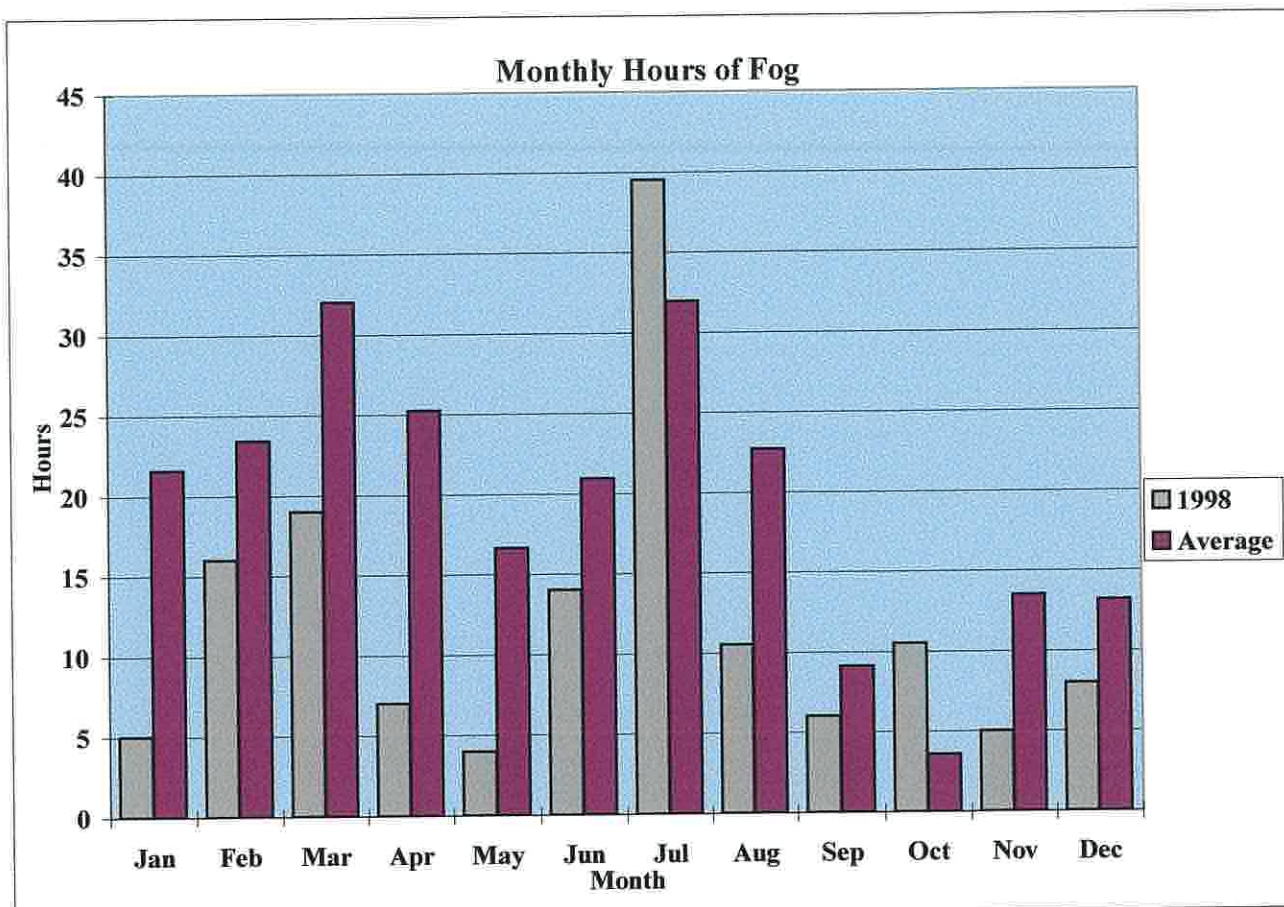


Percentage frequency of wind direction and speed-30 year average





NB. 30 year averages are for the period 1961 - 1990



Diary of astronomical events for 1999 - Bailiwick of Guernsey**January** - Full Moon 02nd and 31st.

Venus can be seen as an evening object low in the South.

February - No full Moon.

The Moon, Venus and Jupiter in close proximity to the WSW on the 17th and 18th.

Meteors - ALPHA AURIGIDS - on the 03rd and the 13th (approx. 12 per hour).

March - Full Moon 02nd and 31st.

Spring Equinox on 21st and BST starts on the 28th - advance clocks by one hour.

Mercury visible in the evening sky (1-2 hrs. after sunset) looking to the west.

Venus is joined by the moon in the south-west sky.

April - Full Moon on the 30th.

Venus at its best.

Meteors - APRIL LYRIDS - on the 22nd (approx. 20 per hour).

- SCORPIIDS - on the 28th (approx. 20 per hour).

May - Full Moon on the 30th.

Venus riding high in the sky.

Mars seen as a beautiful evening object but appears to decrease in size.

Meteors - ALPHA SCORPIIDS - on the 13th (approx. 20 per hour)

June - Full Moon on the 28th.

Jupiter getting brighter in the early morning.

Summer Solstice on the 21st (longest "day" of the year)

July - Full Moon on the 28th.

Uranus and Neptune are at their brightest, but still difficult to see quite low in the SE.

Meteors - CAPRICORNIDS - on the 08th, 15th and 26th (approx 6 per hour).

- ALPHA CYGNIDS - on the 21st (approx 6 per hour).

August - Full Moon on the 26th.

The planet Earth has a total Solar Eclipse on the 11th. First visible over the UK for 90 years.

Will affect the Bailiwick from about 1000hrs. with maximum eclipse about 1115hrs.

Eclipse is total in Alderney for just under 2 minutes. Caution - **View with great care.**

September - Full Moon on the 25th.

Autumn Equinox on the 23rd.

Meteors - ALPHA AURIGNIDS - on the 15th (approx. 10 per hour).

- PISCIDS - on the 21st (approx. 8 per hour).

October - Full Moon on the 24th.

Venus, Jupiter and Saturn all easily visible.

BST ends on the 31st - put clocks back by one hour.

Meteors - PISCIDS - on the 13th (very few).

November - Full Moon on the 23rd.

Good month for viewing Saturn, its rings and some of its moons.

Meteors - TAURIDS - on the 03rd (approx. 12 per hour).

- LEONIDS - on the 18th (approx. 10 per hour).

December - Full Moon on the 22nd.

Mercury seen as a beautiful morning object in the East.

Meteors - GEMINIDS - on the 12th (approx. 70 per hour).

Winter Solstice on the 22nd (shortest "day" of the year).

Lihou Island - Causeway opening times**Summer 1999****All times BST**

NB. Times are approximate. Always exercise caution and check times with the notice board by the slipway.

No responsibility can be accepted for any consequence arising out of the use of these tables

<u>May</u>	<u>Opens</u>	<u>Closes</u>	<u>June</u>	<u>Opens</u>	<u>Closes</u>	<u>July</u>	<u>Opens</u>	<u>Closes</u>	<u>August</u>	<u>Opens</u>	<u>Closes</u>	<u>Sept.</u>	<u>Opens</u>	<u>Closes</u>
1	1234	1556	1	1337	1612	1	1355	1629	1	1445	0521	1	1559	1828
2	1314	1620	2	1418	1636	2	1438	1655	2	1534	1804	2	closed	
3	1352	1641	3	1503	1655	3	1518	1726	3	1632	1832	3	closed	
4	1437	1655	4			4	1621	1749	4	closed		4	closed	
5	1533	1656	5			5	closed		5	closed		5	closed	
6	closed		6			6	closed		6	closed		6	closed	
7	closed		7			7	closed		7	closed		7	1047	1237
8	closed		8			8	closed		8	closed		8	1115	1353
9	closed		9			9	0849	1039	9	1037	1258	9	1142	1454
10	closed		10	0906	1124	10	0940	1207	10	1117	1415	10	1218	1541
11	closed		11	0946	1249	11	1025	1325	11	1152	1512	11	1253	1621
12	0939	1212	12	1025	1400	12	1113	1433	12	1232	1603	12	1333	1655
13	1008	1332	13	1113	1456	13	1155	1530	13	1316	1644	13	1416	1716
14	1045	1431	14	1201	1548	14	1242	1619	14	1359	1721	14	1500	1730
15	1128	1526	15	1251	1637	15	1332	1702	15	1446	1746	15	1558	1732
16	1212	1613	16	1341	1720	16	1420	1740	16	1538	1800	16	closed	
17	1302	1655	17	1437	1756	17	1516	1809	17	1641	1800	17	closed	
18	1353	1733	18	1543	1823	18	1614	1829	18	closed		18	closed	
19	1448	1808	19	1657	1840	19	closed		19	closed		19	closed	
20	1602	1831	20	closed		20	closed		20	closed		20	closed	
21	closed		21	closed		21	closed		21	closed		21	closed	
22	closed		22	closed		22	closed		22	closed		22	closed	
23	closed		23	closed		23	closed		23	closed		23	1119	1308
24	closed		24	closed		24	closed		24	closed		24	1135	1420
25	closed		25	closed		25	closed		25	1145	1334	25	1155	1515
26	closed		26	1114	1250	26	closed		26	1203	1441	26	1224	1603
27	1045	1308	27	1144	1346	27	1202	1403	27	1228	1533	27	1303	1641
28	1118	1353	28	1211	1434	28	1227	1457	28	1255	1619	28	1344	1720
29	1146	1437	29	1239	1520	29	1256	1547	29	1332	1659	29	1433	1752
30	1218	1515	30	1319	1556	30	1329	1626	30	1408	1732	30	1529	1819
31	1257	1548				31	1405	1702	31	1456	1804			

GUERNSEY AIRPORT MET. OFFICE

Appendix VIII

1999 Official Guernsey Ormering tides

		HW am	HW height	HW pm	HW height	LW am	LW height	LW pm	LW height
January	02 Sat	06:23	9.4	18:52	9.3	00:27	1.3	12:57	1.0
	03 Sun	07:11	9.6	19:39	9.3	01:16	1.1	13:44	0.9
	04 Mon	07:55	9.6	20:22	9.2	02:01	1.1	14:28	0.9
	17 Sun	06:18	8.6	18:41	8.5	00:16	2.1	12:41	1.8
	18 Mon	06:58	8.9	19:20	8.8	00:57	1.7	13:22	1.5
	19 Tue	07:36	9.1	19:58	8.9	01:36	1.5	14:01	1.3
February	31 Sun	06:13	9.1	18:42	9	00:16	1.6	12:46	1.2
	01 Mon	06:58	9.4	19:25	9.2	01:04	1.3	13:31	1.0
	02 Tue	07:40	9.5	20:05	9.2	01:46	1.1	14:12	0.9
	16 Tue	06:41	9.1	19:04	9	00:40	1.6	13:06	1.2
	17 Wed	07:21	9.4	19:43	9.3	01:22	1.1	13:47	0.8
	18 Thu	08:00	9.6	20:21	9.4	02:02	0.9	14:26	0.7
March	02 Tue	06:41	9.3	19:06	9.2	00:48	1.3	13:13	1.0
	03 Wed	07:20	9.5	19:42	9.3	01:27	1.1	13:50	0.9
	04 Thu	07:55	9.4	20:15	9.2	02:02	1.0	14:24	1.0
	17 Wed	06:18	9.2	18:42	9.2	00:18	1.4	12:44	0.9
	18 Thu	07:00	9.7	19:22	9.6	01:03	0.9	13:26	0.5
	19 Fri	07:41	9.9	20:01	9.8	01:44	0.5	14:06	0.3
April	31 Wed	06:18	9.1	18:40	9.1	00:24	1.5	12:47	1.2
	01 Thu	06:54	9.3	19:15	9.2	01:02	1.2	13:23	1.0
	02 Fri	07:28	9.3	19:46	9.2	01:35	1.1	13:54	1.1
	16 Fri	06:35	9.7	18:58	9.8	00:38	0.8	13:02	0.4
	17 Sat	07:19	10	19:39	10	01:23	0.4	13:44	0.2
	18 Sun	08:01	10	20:20	9.9	02:05	0.3	14:25	0.3
	30 Fri	06:25	8.9	18:45	9	00:31	1.5	12:52	1.4

Times are given in GMT and heights are in meters above chart datum.

High pressure will depress tide levels whereas Low pressure will raise tide levels.

Onshore winds will raise local tide levels whereas offshore winds will depress local tide levels.

This report is produced and printed by the Guernsey Airport Met. Office and is based largely on the monthly weather reports prepared by David Cunningham - the Office Head of Climatology.

Monthly weather reports are available through the post for an annual subscription of £18:00.

The information contained in this report remains the property of Guernsey Airport Met. Office and must not be reproduced in any form without the express permission of The Senior Meteorological Observer.