

# Guernsey Airport Meteorological Observatory

1999

## ANNUAL WEATHER REPORT



Fair weather cumulus over Guernsey

States of Guernsey  
Board of Administration



Guernsey Airport  
Meteorological Office  
Annual report  
1999

Preface

Welcome to the final Guernsey Met. Office Annual Report of the 20<sup>th</sup> Century.

1999 was an eventful year for the Office, the total eclipse of the sun on August 11<sup>th</sup> proved to be the main attraction and our new sophisticated recording equipment meant that we were able to log all the important weather parameters by the minute. The information collected is now in the hands of researchers at Reading University who are analysing every detail to see what can be learnt from this once in a lifetime event. (A fascinating glimpse of changes in local weather conditions in Alderney, where the Eclipse was total, can be seen in the graphs section – Appendix VI).

We are grateful to the Tourist Board for involving us in the development of the existing L'Ancrese site and we are pleased to include the "Annual Report" from L'Ancrese in this publication. Co-operation between the Department of Engineering, the Board of Administration (Environment section), the Lihou Island Warden and ourselves has resulted in a new automatic weather station on Lihou Island coming on line too. The data from these two sites will help us to further our knowledge and understanding of the "local weather".

Several other weather stations are being considered at this present time and it is thanks to the power of modern computers that we are able to undertake all this extra data monitoring with little real effect on staff time.

Another highlight of the year was the Office connection to the Internet and the subsequent production of our own local Met. Office web site which can be accessed on [www.metoffice.gov.gg](http://www.metoffice.gov.gg) This site provides all sorts of useful local information as well as offering links to other weather related pages.

The weather itself came up with one or two highlights of it's own with the driest July and the wettest December on record at the Airport. In fact December set a record for any month, at the Airport, with a total of 249.6mm., half of which fell during the Christmas week.



Annual fluctuations apart though it is to the long term that we need to look in order to gain some idea of the direction in which the local climate is heading.

Proper weather records for Guernsey have been kept since 1843, and it is a credit to the early pioneers that we are now able to look back, with some accuracy, through 156 years of meteorological history. Observing conditions in those days were somewhat pedestrian and it was quite normal to take readings only twice a day. The old instruments too could also be a little suspect so we have to be little circumspect when drawing specific conclusions about changes in weather patterns in the long term.

However, taking a broad-brush view of the weather over the last one hundred years does show up one or two interesting trends.

Temperatures are certainly on the increase with most months of the last decade being warmer than the long-term average. The sun is a little reluctant to follow suit although there is a hint in the most recent figures of sunnier times to come.

Rainfall totals have been falling steadily since the wet 1960's although it is difficult to believe it having just suffered one of the wettest Decembers on record.

So temperatures are up and rainfall is down – can this be evidence at last of the much-hyped Global Warming. The simple answer is yes; the most widely accepted ideas on this subject do include wetter, milder winters with warmer and drier springs and summers. This is certainly the current trend and we shall be monitoring our readings closely over the next few years to see if that trend continues – watch this space!

Tim Lillington  
Senior Meteorological Observer  
January 2000



## **Lihou Island weather station**

The latest source of weather data!



Photograph courtesy of Adrian Gidney – Lihou Island warden

## **St. Saviour's Reservoir**

Will global warming mean less rainfall?



## CONTENTS

COMMENTS ON THE WEATHER OF 1999 .....	1
---------------------------------------	---

### MONTHLY COMMENTS:

JANUARY/FEBRUARY .....	2
MARCH .....	3
APRIL/MAY .....	4
JUNE .....	5
JULY .....	6
AUGUST/SEPTEMBER .....	7
OCTOBER .....	8
NOVEMBER .....	9
DECEMBER .....	10/11

### MONTHLY STATISTICS:

ANNUAL WEATHER SUMMARY .....	12
SUNSHINE/PRESSURE/RAINFALL .....	13
TEMPERATURE .....	14
NUMBER OF DAYS WITH .....	15
WIND SPEED .....	16
WIND SPEED, DIRECTION (PERCENTAGE FREQUENCIES) .....	17
FOG (visibility <1000m) .....	18
RUNWAY VISUAL RANGE (<600m) .....	19
REPORT FOR ROCQUAINE and L'ANCRESSE .....	20

### DAILY OBSERVATIONS FOR 1999:

JANUARY .....	21
FEBRUARY .....	22
MARCH .....	23
APRIL .....	24
MAY .....	25
JUNE .....	26
JULY .....	27
AUGUST .....	28
SEPTEMBER .....	29
OCTOBER .....	30
NOVEMBER .....	31
DECEMBER .....	32

### APPENDICES:

#### GRAPHS

Monthly Sunshine / Sunless Days .....	I
Monthly Rainfall / Wetdays .....	II
Percentage Frequency of Wind Direction and Speed .....	III
Weekly Mean Temperature / Monthly Mean Air Pressure .....	IV
Monthly Hours of Fog / Surface Sea Water Temperatures .....	V
Eclipse Graphs (Alderney) .....	VI

#### SUPPLEMENTARY INFORMATION PAGES

Diary of Astronomical Events .....	VII
Lihou Island Access Times .....	VIII
Ormering Tides .....	IX



**METEOROLOGICAL OFFICE GUERNSEY AIRPORT****COMMENT ON THE WEATHER OF 1999**

Warmer than averages conditions persisted for most of the year, to produce yet another year in recent times with near record figures. In contrast to much of England even a record mild December would not have given a record warm year. Nonetheless, this year was the fifth warmest, all of which have occurred since 1988.

January ended up as the fifth mildest on record, being wedged in between 1983 and 1948. As might be expected there was more rain than normal, however, the excess was less than 20mm. The first two weeks of the month were sunny, with nearly twice the average, but after that there were just two days that managed more than two hours of sunshine. Overall the sunny start ensured that the month was sunnier than normal. A lessening of the wind after a gale on the 3<sup>rd</sup> meant that the mean wind speed was slightly below normal. There were about the usual number of days with fog, its effect, though, was limited.

Mild weather continued through much of February, with a mean temperature more than 1°C above the long term average. Sunshine and rainfall were, in contrast, close to normal, the month being slightly sunnier and slightly drier than usual. Despite spells of windy weather, there were no gales and the mean wind speed was marginally below normal. The mildness of the month, combined with a mild December and January, ensured that the winter was mild once more. Prior to 1989 only one winter, 1975, had been milder than this one. Since then four winters have been milder than this year. Rainfall was the most since 1995, whilst sunshine was well below the record total of last year, being on a par with 1996 and 1997.

The mean temperature for March was nearly 1½°C above the average from 1961-90, but only equal to that for the last 10 years. A wet start to the month was followed by mainly dry conditions, with more than 1.0mm of rain on just three days after the 8<sup>th</sup>. We had the sunniest conditions since 1990, with more than 60 hours recorded between the 14<sup>th</sup> and the 19<sup>th</sup>. A breezy beginning was followed by quiet weather for most of the rest of March, so that the mean wind speed was well below normal.

Warm weather early and late in April more than balanced out cold conditions around mid-month, to make this a mild month. This was the fourth wettest April on record, but it was drier than last year. Sunshine was below normal, with a lower total than in March. Fog was slightly more in evidence than usual, being at its worst in the first 10 days. The mean wind speed was marginally above average, boosted by breezy conditions between the 27<sup>th</sup> and 29<sup>th</sup>.

Overall May was the fifth warmest at the Airport, although the mean maximum temperature was only the eighth highest. Rainfall was less than half the average, but about three times last year's total, whilst sunshine was close to normal for the first time in more than 10 years. In the intervening period May has been either very sunny or very dull. The mean wind speed was marginally less than average, with the prevailing direction, unusually for May, between south and west. The number of days of fog was about normal, though, unluckily two of the worst days were Sunday the 23<sup>rd</sup> and 30<sup>th</sup>.

The spring was another warm one, having a virtually identical temperature to 1998, but a touch cooler than 1997. The last two springs have been wet, with near normal sunshine, in contrast 1997 was considerably drier and sunnier.

The mean maximum temperature for June was the lowest for just two years. Despite being marginally warmer than the 30 year average, this was the coldest June since 1991. We also had our third wet June in succession, but there was just 0.6mm of rain from the 10<sup>th</sup> to the 25<sup>th</sup>. Sunny conditions during this dry spell resulted in an excess of 30 hours of sunshine for the month. The unsettled spells of weather early and late in the month were rather windy, but in between winds were light for much of the time.

July, whilst not being as sunny as June, was exceptionally dry and the warmest for four years. The rainfall was the lowest on record at the Airport, despite some unsettled spells of weather. Surprisingly, considering its dryness, the mean pressure was a touch below average. Temperatures during August remained generally above average, although it was wet and rather cloudy. This cloud caused problems for the observation of the Eclipse on the 11<sup>th</sup>, however, some small cloud breaks did occur.

This summer was both wetter and sunnier than in 1998 or 1997, although 1997 was warmer. Most summers in recent years have been warmer than the long term average. Since 1989 only 1991 and 1993 have seen temperatures below average.



month it was generally wet. The thundery nature of some of the rain meant marked variations across the Island. October saw temperature near normal, but this year the last week of the month was the warmest. Rainfall was less than usual, whilst sunshine was above average.

This November was the driest since 1988 and it was also sunnier than normal, but still duller than the average for the preceding four years. The mean temperature was slightly higher than normal, but it was colder than November in 1997, 1995 and 1994. The autumn was mild, but in recent years the autumn has been milder in 1997, 1995, 1994 and 1989. Rain was the lowest for four years and sunshine, while above average, was beaten by three out of the preceding four years.

December was the wettest month recorded at Guernsey Airport, with 249.6mm compared to 233.9mm in October 1960. Despite all the rain it was slightly sunnier than normal and also milder than average, but slightly cooler than in the three previous years. This was the windiest since 1993, with just two days having a mean wind speed below 10 knots.

The exceptionally wet December made this the wettest year since 1994. Sunshine was also above average for the fifth year in succession, being sunnier than 1998, but duller than 1997.

## January

The unsettled conditions experienced early this month were similar to those of a January 1998. A depression centred off western Ireland on the 1<sup>st</sup> was filling slowly, leaving the Channel in a reasonably clear and mild south-west flow. During the afternoon winds strengthened as fronts pushed east towards the Islands. Rain arrived by midnight and became heavy in the early hours of the 2<sup>nd</sup>. It cleared up for a while during the morning, but heavy showers spread in by the afternoon, some of the showers being accompanied by hail. A new low was by now moving rapidly east-north-east across the Atlantic and deepening. Rain from this system reached us early on the 3<sup>rd</sup>, becoming heavy for a time. Once the rain had cleared the wind veered westerly and increased to gale force, with gusts to storm force; the peak gust being 58kt.

As the low, which gave our gale moved off into the North Sea, another one moved north-east to pass to the north-west of Ireland. The associated warm front passed through the area late on the 3<sup>rd</sup>, followed by a very mild and moist airstream. This raised the temperature to its highest for the month in the first few hours of the 4<sup>th</sup>. The rest of the day was also mild, but with outbreaks of rain or drizzle and some fog patches. The next day a southerly flow developed between high pressure over southern Europe and low pressure lying from west of Portugal to west of Ireland. For two days we had mostly clear conditions and it remained mild, although not as mild as much of southern England.

Cooler weather followed the passage of a cold front early on the 7<sup>th</sup>. More fronts crossed the area later in the day as a complex area of low pressure transferred east over the rest of Britain. As this moved off towards Europe a cold northerly flow spread down as far as the Bailiwick. The 9<sup>th</sup> was a mainly sunny day, with only a couple of light showers, however, on the 10<sup>th</sup>, as winds became north-east, showers developed. The showers were mostly a mixture of sleet and hail, but with some snow as well. A backing of the flow allowed us more sunshine the next day, but it remained cold.

This cold spell of weather proved to be short-lived, with fronts pushing east into western Britain early on the 12<sup>th</sup>. Rain arrived here during the morning, becoming heavy in the early afternoon, before clearing away in the evening. For the following four days a generally westerly flow covered the British Isles, on the southern flank of deep depressions moving north-east to the south of Iceland. This ensured mild weather, but also spells of rain as fronts crossed the Islands. There was rain for most of the afternoon of the 15<sup>th</sup> and the rain became very heavy for a while early on the 16<sup>th</sup> on the passage of a cold front.

A showery south-west airstream covered the United Kingdom on the 17<sup>th</sup>. Showers, though, were infrequent here allowing a mainly sunny day. Fronts were soon affecting us again, with the first set bringing rain by the evening of the 18<sup>th</sup>. Fronts stayed close by for the next two days, keeping our weather cloudy with periods of rain. South to south-west winds helped to keep temperatures near to 10°C. Once the fronts had gone, pressure rose and winds fell light. A front, however, remained slow moving across northern France, so that sunshine was limited despite a belt of high pressure covering southern England on the 22<sup>nd</sup>. As the high drifted east the front over France edged closer, whilst more fronts crossed Ireland and Scotland. When these fronts reached us they gave drizzle and fog patches. By dawn on the 24<sup>th</sup> the drizzle had cleared away, but with light winds and the air still moist, radiation fog formed for a change. This was swept away in the afternoon as winds picked up ahead of the next fronts.

We had outbreaks of rain and drizzle on the 25<sup>th</sup> clearing late in the evening following the passage of a



At the same time a developing high over Scandinavia started to drift south-west. These two linked up on the 30<sup>th</sup>, killing off a front stuck over the Channel. With winds now blowing from France, though, it turned colder, but the 31<sup>st</sup> was at least dry and sunny with light winds.

## **February**

A large anticyclone was centred over south-west England at the start of the month, resulting in quiet, dry weather, although there was a lack of sunshine. This anticyclone held sway for the first three days, slipping south to the Bay of Biscay. During the 4<sup>th</sup> fronts pushed into north-west Britain, sweeping south-east through the day, eventually reaching the Channel by the end of the day. Winds picked up ahead of the front and there was some drizzle on the front, but otherwise it was a weak affair. The following north-west airstream was less cloudy, so we managed a reasonable amount of sunshine.

A minor frontal system moved south-east over the British Isles on the 6<sup>th</sup> bringing rain to much of England and Wales. We remained in mild air, with just a few light showers. Once this system had cleared through it turned colder, with showers of rain or hail. These colder conditions were short-lived here, as a developing system was moving south-east towards north-west Ireland. On the 8<sup>th</sup> this continued to move south-east, bringing rain to us before dawn. It was just cold enough for some sleet to be noticed at the Airport, whereas snow was reported from south-west England and Wales. The centre of the low passed just to the south-west of Alderney, keeping them in cold air as the wind backed from south, to north-east. In contrast, mild air moved across Guernsey, with the wind veering from south-east, to westerly and increased to strong. At one time the temperature in Guernsey was 6°C higher than that in Alderney. Cold northerly winds then spread down overnight, with the temperature falling to just above freezing by dawn on the 9<sup>th</sup>. This and the following three days were mainly sunny, but rather cold, with only a couple of light wintry showers on the night of the 9<sup>th</sup>.

The weather pattern then began to change, with fronts encroaching slowly from the west on the 13<sup>th</sup>, bringing rain by dawn. These fronts were pushed back westwards later in the day, as a high moved south-west towards the area. That night was clear, and with light winds we recorded our lowest temperature of the month, at 0.3°C. There was, though, a marked ground frost. A renewed push of fronts from the west brought rain, drizzle and fog overnight. The clearance of the fronts on the 15<sup>th</sup> was followed by a mainly sunny day and it also turned milder. With high pressure now centred out in the Atlantic, a north-west flow became established across the British Isles. Whilst cold weather and heavy snow were reported from Scotland, we maintained much milder conditions, but with fronts close by most of the time, to keep it mainly cloudy with spells of rain or drizzle.

By the 19<sup>th</sup> a westerly airstream had set in, bringing very moist air to the Islands. This situation resulted in a dull day, with rain and drizzle throughout, accompanied by hill fog at times. A cold front cleared through slowly the next day, to allow a few hours of sunshine, but more fronts were soon making their presence felt. Cloudy weather on the 21<sup>st</sup> was followed by much brighter, but breezy, conditions for the 22<sup>nd</sup>. The next low to affect us began to form off north-west Ireland on the 23<sup>rd</sup>. It then moved south-east, whilst its associated fronts edged east, bringing rain during the afternoon. The low continued to move south-east, passing through the Bailiwick the next day. After a wet start, skies cleared in the late morning and with light winds we managed our warmest day of the month, whereas southern England was still cold and damp.

A short-lived ridge of high pressure crossed the area on the 25<sup>th</sup>, allowing a quiet day, but it was cloudy and rather cool. Fronts were again crossing northern Britain, these not reaching here until the evening of the 26<sup>th</sup>. A wet night followed, before a clearance arrived late the following morning. The weather was then fair for the rest of the 27<sup>th</sup> and most of the 28<sup>th</sup>, before more rain arrived late in the day.

## **March**

The early part of the month was dominated by low pressure, giving rather wet and windy conditions. Initially a depression moved east across Scotland, leaving the Channel in a moist and breezy westerly flow, which gave a mixture of rain, drizzle and hill fog. Little changed the next day, although sunshine in the early afternoon raised temperatures to the mid-fifties Fahrenheit. As the cold front cleared we had some heavy rain, which was followed by showers. A complex low, moving slowly east over the United Kingdom, became the main feature of the weather pattern. This situation ensured that there were showers on each day from the 3<sup>rd</sup> to the 7<sup>th</sup>, occasionally accompanied by hail. Temperatures also fell below normal as winds swung around to the north-west, but there were at least some sunny periods between the showers.

The weather cleared on the 8<sup>th</sup> as a deepening depression came in from the south-west, bringing rain



affected us on the 8<sup>th</sup>, edging away slowly eastwards. During this period we had some light rain at times, but also sunny periods and by the 11<sup>th</sup> it had turned mild again.

On the 13<sup>th</sup> pressure started to rise as the low near Iberia slipped south and the one south of Iceland filled. By the next morning an anticyclone was centred near to the Bailiwick, giving light winds and clear skies. High pressure was maintained over the Channel until late on the 17<sup>th</sup>, giving a run of sunny days. Light winds, combined with the clear skies, allowed chilly nights, but temperatures were above normal through the day. The 17<sup>th</sup> did have extensive sea fog, which affected coasts at times during the afternoon. The passage of a very weak cold front on the 18<sup>th</sup> was marked only by a band of cloud, with sunshine following on behind. A new anticyclone, which took up position off south-west Ireland, pulled in cooler air on its northern flank, but it remained sunny. High pressure was still in control of our weather on the 20<sup>th</sup>, but was beginning to decline as fronts crossed Scotland.

The change to much less settled weather was complete by the early hours of the 21<sup>st</sup>. An active cold front gave rain during the morning of the 21<sup>st</sup>, with winds picking up to their strongest for almost three weeks. A brighter day followed, before a weak warm front brought cloud along on the evening of the 22<sup>nd</sup>. The next couple of days were generally cloudy, but dry. The cloud cleared by the evening of the 24<sup>th</sup>, only to return early on the 25<sup>th</sup>. After a spell of heavy rain early the following day, the weather brightened up once more. A small depression passed by just off south-west Brittany on the 27<sup>th</sup>, producing some heavy showers over there. We, though, escaped with a mainly sunny day. A transient ridge ensured us more sunshine for the 28<sup>th</sup>. A warm front swept through overnight, bringing some rain and drizzle. The following cold front gave a persistent rain and drizzle by the evening of the 29<sup>th</sup>, accompanied by hill fog.

The close proximity of a front on the 30<sup>th</sup> resulted in a cloudy day, with fog early and occasional light rain during the day. The front was pushed north up the western side of the British Isles on the 31<sup>st</sup>, as a low moved north near to western Ireland. A south to south-east flow dragged in warm air from north Africa, allowing the temperature to reach its peak for the month at 15.9°C. On the sheltered west coast of the Island it was as much as 2°C warmer.

## April

A south-east flow, between high pressure over eastern Europe and low pressure to the west and south-west of the British Isles, covered the area at the start of the month. This ensured warm weather, but an approaching trough brought some light rain during the afternoon of the 1<sup>st</sup>. The cloud cleared away by midnight, but with low pressure nearby further cloud and outbreaks of rain spread in later in the day. Pressure then rose as an anticyclone moved north-east from Spain, to be centred over France by the afternoon of the 4<sup>th</sup>. Winds were blowing from between south and west on the 3<sup>rd</sup>, 4<sup>th</sup> and 5<sup>th</sup>. This kept temperatures well above normal, however it was cloudy most of the time with hill fog a problem on the 3<sup>rd</sup> and early on the 4<sup>th</sup>.

A cold front went through on the morning of the 6<sup>th</sup>, clearing away the moist foggy air, to allow sunny periods that afternoon. A trough of low pressure came through late in the day, bringing heavy rain around midnight. The cloud had cleared by dawn on the 7<sup>th</sup>, with sunny periods through the day and after a clear night we had sunny periods the following morning. A weak warm front then passed through, giving no rain, but re-introducing moist air. The moist air was with us until midday on the 10<sup>th</sup> and this meant that we had a dull 48 hours, with hill fog patches and occasional drizzle.

The weather was changeable for the next couple of days, with sunny periods on the 11<sup>th</sup> and 12<sup>th</sup>, but rain during the intervening night. By the 13<sup>th</sup> a depression was centred over the North Sea, resulting in a northerly flow over the British Isles. For the next five days there was a mixture of showers and fair periods, allowing a reasonable amount of sunshine. Winds originating in the Arctic meant that it was cold, with the showers including hail at times. Also three waterspouts were seen on the afternoon of the 14<sup>th</sup> and there was thunder shortly after dawn on the 17<sup>th</sup>.

Fronts began to make inroads from the south-west on the 18<sup>th</sup>. Before their arrival we had light winds and clear skies for the night of the 18<sup>th</sup>/19<sup>th</sup>, giving a ground frost. Cloud increased rapidly during the morning, with rain that afternoon and evening. Relatively mild, but moist air came in with the rain so that by the early hours of the 20<sup>th</sup> it was misty, with hill fog patches. Rain persisted for much of the day, with some heavy bursts during the afternoon, before clear air arrived during the evening. By midnight on the 20<sup>th</sup> a deep low was situated in Bantry Bay, drifting slowly north-east. For the following two days the Islands were in a showery airstream on the southern flank of this low. The resultant weather was, sunny periods on the morning of the 21<sup>st</sup>, some rain in the afternoon, a heavy shower early on the 22<sup>nd</sup> then a mainly sunny day. Due to south-west winds temperatures were above normal.



depression was out of the way and we managed a mainly sunny day, with winds falling light. Fronts from the next weather system reached us early on the 25<sup>th</sup>, giving some light rain during the morning and then heavier rain in the afternoon. By the following morning the cloud was breaking up and for most of the day it was sunny with a light breeze, ensuring that conditions were rather warm.

By the 27<sup>th</sup>, pressure had risen across northern Britain, whilst a low over Biscay was sinking slowly south. This situation brought strengthening north-east winds, but with sunshine that afternoon and a day of unbroken sunshine on the 28<sup>th</sup>. Cloudy spread in from the north-east the next day and combined with a strong wind, accentuated the chill, compared to the preceding days. To finish off we had much lighter winds, sunny spells and higher temperatures.

## May

Early in the month high pressure over Ireland, extended a ridge across the United Kingdom, then south-east to Italy. This allowed a light easterly flow over the Channel, which gave mainly sunny conditions for the first three days. Sea fog was evident for a while on the 1<sup>st</sup> and 2<sup>nd</sup>, but daytime temperatures were well above normal. By the 4<sup>th</sup> the extension of low pressure into southern France, resulted in a strengthening north-east wind, which highlighted the drop in temperature from the preceding days.

On the 5<sup>th</sup> low pressure began to push in from the south-west, with the wind swinging to the south to bring in moist air. A mainly cloudy day followed with fog patches and some rain in the evening. The passage of a front cleared the cloud away on the morning of the 6<sup>th</sup>, allowing us a rather warm and sunny afternoon. The weather remained changeable, though, with a thundery shower early on the 7<sup>th</sup> and mainly cloudy conditions through the day. Pressure then remained low to the west and south-west of the British Isles throughout the next six days. For the most part we had winds originating over the Atlantic, so that there was no particularly warm or cold weather. The low pressure, though, ensured that there was cloud at times most days, but we escaped any significant rain.

On the 14<sup>th</sup> the low began to transfer slowly east across Britain, allowing pressure to rise over western areas. This change brought mainly sunny conditions for three days, although fog formed for a while on the 15<sup>th</sup>. A north to north-east flow held temperatures down, despite the sunshine. The 17<sup>th</sup> saw low pressure pushing up from the south, tightening the pressure gradient across the Channel, to bring a strong and cool wind. By the evening it had become cloudy, with rain arriving later on. The rain was heavy during the early hours of the 18<sup>th</sup>, before easing off by dawn. Lighter south-east winds and sunshine made the 18<sup>th</sup> a much better day. The low pressure then moved away north-east and filled, with the weather subsequently coming in from the Atlantic.

From the 20<sup>th</sup> to the 25<sup>th</sup>, pressure was low near Iceland and high to the west of Spain, with a ridge over Biscay. Fronts crossed the British isles at times, but the proximity of high pressure ensured that any fronts in our area were weak. Several days were cloudy and cooler than previously in the month. The gloomiest day was the 23<sup>rd</sup>, with no sunshine, thick fog in the morning and outbreaks of drizzle. The 24<sup>th</sup> was a better day, although still mainly cloudy, then the passage of a front on the 25<sup>th</sup> was followed by the clearance of cloud that afternoon.

A small high moved up the Channel on the 26<sup>th</sup>, allowing unbroken sunshine and boosting the temperature somewhat. High pressure was short-lived, though, as a thundery depression pushed north from Spain. With this low passing to the west of us we received a warm easterly breeze, before rain arrived in the evening. A transient ridge followed for the 28<sup>th</sup>, with temperatures slightly lower than the previous day, but it was still warm. The sequence of weather was then repeated, with a depression moving north across Biscay and warm air from France being fed across the Islands. In contrast on the 30<sup>th</sup> a slack area of pressure covered the Islands, with a very light winds. The stagnating air over the Channel, allowed extensive fog to form and this affected the Bailiwick at times during the day and also keeping temperatures down. A build of pressure over the United Kingdom brought strengthening north-east to clear the fog away early on the 31<sup>st</sup>, although it took until the afternoon for sun to come out.

## June

On the 1<sup>st</sup> a belt of high pressure extended across the British Isles, from the Azores, as far east as Poland. This allowed us a reasonably warm start to the month, but pressure was soon falling as a thundery trough pushed north from Spain. There was a thunderstorm that evening, with some heavy rain, although wetter conditions were reported from Herm. By the next morning a low was centred near Lizard Point, with



For the following five days low pressure was the dominant feature of the weather for Britain. The first thundery low continued to move away north, only to be replaced by another, coming in from the west. This gave some rain early on the 3<sup>rd</sup>, followed in turn by showery conditions. A deeper depression than approached north-west Ireland, with its fronts producing rain, drizzle and hill fog in the early hours of the 4<sup>th</sup>. There was a little sunshine around the middle of the day, before heavy showers pushed in. After a damp night, the 5<sup>th</sup> was brighter but cool with further showers.

It took another couple of days for the low pressure to be replaced by a ridge of high pressure. Despite this delay, the 6<sup>th</sup> and 7<sup>th</sup> were mainly sunny with only a few light showers, although temperatures remained below normal. In contrast rising pressure over the bay of Biscay on the 8<sup>th</sup> did not stop fronts coming in from the west, to bring rain later in the day. The next day, indeed, turned out to be the duller of the month, with rain in the morning and the sun not making an appearance until the evening.

Subsequently high pressure took over, with no significant frontal activity affecting the Channel Isles for almost ten days. From the 10<sup>th</sup> to the 18<sup>th</sup> there was no measurable rain and it was mainly sunny, apart from a minor hiccup on the 12<sup>th</sup>. Winds were light as well, but it took until the 14<sup>th</sup> before temperature climbed above average. The following couple days, with a light north-east breeze, were warm, then the temperature fell back as winds became north-westerly.

The 19<sup>th</sup> began in a similar vein, apart from some fog patches, but cloud arrived in the afternoon as the tail-end of a weak warm front made its presence felt. The following cold front produced a short period of rain and drizzle on the morning of the 20<sup>th</sup>, however, by the afternoon it was sunny again, although with a fresh wind. After this brief interruption pressure built once more and took control for another five days. A north-west flow meant that the 21<sup>st</sup> was sunny, but rather cool and temperatures were held down somewhat for the next two days. By the 24<sup>th</sup> winds were easterly, ensuring much warmer conditions. A moderate to fresh north-east breeze the next day, kept exposed eastern parts of the Island as much as 3°C cooler than sheltered western and south-western areas.

The weather pattern then began to change, as thundery low pressure coming up from the south replaced the previous high pressure. Any thundery activity, though, was slight with a small amount of rain. It did, however, mark a return to cooler conditions and the 27<sup>th</sup> was a rather windy day, but fairly sunny after the clearance of any early rain. The 28<sup>th</sup> was mainly cloudy, with fronts encroaching from the south-west. That night a small frontal system crossed the area, giving several hours of moderate rain, accompanied by mist and hill fog, resulting in our wettest day of the month. With low pressure close by, the 29<sup>th</sup> was mainly cloudy, although places with shelter from the south-west had sunny periods. A passing ridge of high pressure allowed us a sunny day to end of the month, then overnight rain, drizzle and hill fog spread in.

## July

A warm front moved through the area early on the 1<sup>st</sup>, giving a spell of rain followed by drizzle and fog. Much of the day, though, was sunny. A small high then drifted east over France, allowing a south-east flow to develop for a while on the 2<sup>nd</sup>. This ensured a very warm day, but the high was soon out of the way, with weak fronts coming in from the west. From the 3<sup>rd</sup> to the 6<sup>th</sup>, low pressure dominated the weather pattern. Initially a slow moving depression to the west of Ireland was the main feature. It then edged slowly south-east, while much of Britain was covered by a slack area of low pressure. A couple of troughs of low pressure gave rain on the afternoon of the 4<sup>th</sup> and in the early hours of the 5<sup>th</sup>, adding up to the wettest day of the month. During this spell sunshine was lacking, although winds were light, with temperatures close to normal.

Pressure began to rise on the 6<sup>th</sup>, with an anticyclone over Biscay by the 7<sup>th</sup>. Winds, though, were blowing from the west bringing large amounts of cloud and keeping the temperature down. The anticyclone reached Wales early on the 8<sup>th</sup>, bringing us light north-east winds and plenty of sunshine. For the next four days we enjoyed warm and sunny conditions, although with a moderate north-east breeze. By the 12<sup>th</sup> the pressure had dropped considerably, with high pressure over Scotland and thundery low pressure close by over France.

The continental low pressure did not affect our weather, however, instead the high over Scotland declined allowing Atlantic fronts to push into western Britain. Only a few spots of rain fell as these went through on the 13<sup>th</sup>, but the next system was rather more active, giving a brief burst of moderate rain late on the 14<sup>th</sup>. The 15<sup>th</sup> was mainly sunny, after the clearance of fog patches. The chart for the 16<sup>th</sup> showed no fronts in our area until the evening, but moist air and south-west winds kept it cloudy with drizzle at times. A very weak front lying over the channel on the 17<sup>th</sup> gave no rain, but maintained cloud until mid-afternoon. The next day was better, with sunshine, light winds and the temperature creeping into the warm category once more.



the 22<sup>nd</sup>. Despite this changeable pattern we received rain & drizzle for just a few hours early on the 20<sup>th</sup>. A new high started to push in from the Atlantic on the 22<sup>nd</sup>, bringing sunshine for the 23<sup>rd</sup>. The following couple of days had unbroken sunshine and it became very warm, with the highest temperature for the month, 25.7°C, recorded on the 25<sup>th</sup>. A steep pressure gradient became established over the Channel by the early hours of the next day. There followed two very windy days, so that despite a reasonable amount of sunshine, temperatures were held down with these lower temperatures accentuated by the wind.

As the intensity of the anticyclone decreased the pressure gradient across the Channel slackened. The consequent easing of the wind allowed it to turn warmer again. By the 30<sup>th</sup> the airflow had weakened further and backed to the north-west bringing in cooler air. By the evening fog patches had started to appear as well. A mixture of sea fog and low cloud plagued the area on the 31<sup>st</sup>, so that daytime temperatures remained around a comparatively cool 17°C. This was in marked contrast to the hot conditions affecting England.

## August

A slack area of low pressure covered the Channel and northern France on the 1<sup>st</sup>, giving light winds with sea breezes. This ensured that sea fog drifted on shore at times, but it was generally sunny and warm. Fronts started to edge in from the west the next day, although it took most of the day for cloud to thicken significantly. Late in the day, though, heavy rain came along, giving us more rain in an hour, than in the whole of July. With a complex area of low pressure situated to the south-west of the British Isles from the 3<sup>rd</sup> to the 7<sup>th</sup>, our weather oscillated between cloudy and sunny days. Temperatures were above normal, with warm conditions on the 3<sup>rd</sup>, 5<sup>th</sup> and 7<sup>th</sup>. Troughs of low pressure brought several occasions of heavy rain, accompanied by thunder at times. Out of these five days the 6<sup>th</sup> was the worst, with no sunshine and fog and rain by late afternoon.

On the 8<sup>th</sup> a depression began to transfer north-east from western Biscay towards the Channel Islands. This depression passed through the area late on the 9<sup>th</sup>, allowing a weak ridge of high pressure to edge into western parts of Britain. There was heavy rain at first on the 8<sup>th</sup>, followed by showery conditions, whilst the 9<sup>th</sup> saw showers early on, then becoming mainly dry. Daytime temperatures were near normal, but with mild nights. As the ridge pushed in winds veered to the north-west, bringing in rather cool air, with this change of temperature made more marked by a lack of sunshine.

The weather for the total eclipse of the Sun on the 11<sup>th</sup> was disappointing. A sheet of cloud covered the area, with only small breaks allowing occasional glimpse of the Sun. The main observation site at Fort Albert in Alderney was lucky enough to receive one of these cloud breaks at the time of totality. A small low was drifting south-east from near to south-west Ireland, with its fronts weakening as they came up against high pressure over the United Kingdom. Cloud thinned out slowly on the 12<sup>th</sup> to give us a sunny afternoon and it became fairly warm with light winds.

As was the case throughout this month any high pressure was short-lived. A front reached the Irish Sea and western Cornwall by the middle of the 13<sup>th</sup>, then continued east to reach us in the evening. We had several hours of rain & drizzle before the front cleared, but it was followed soon by a minor frontal system, which gave further rain, drizzle and hill fog patches on the morning of the 14<sup>th</sup>. Once this system had moved away the Channel was left in a fresh north-west airstream, with showers reaching us early the next morning. The rest of the day was mainly cloudy and rather cool. The 16<sup>th</sup> was a better day, although still with some showers, but, a new depression was already on its way to maintain an autumnal feel to the weather.

With a low moving into western Ireland early on the 17<sup>th</sup>, and a front approaching Brittany, it was cloudy with rain by the end of the morning. There was rain off and on through the afternoon, followed in the evening by bursts of heavy rain. By the 18<sup>th</sup> the weather was showery and as the low continued to edge east across Wales and England, the wind picked up. The next day was better as the low drifted off into the North Sea, allowing the wind to drop and leaving us with long periods of sunshine.

From the 20<sup>th</sup>, temperatures began to rise with a small high giving light winds and spells of sun. Following this winds became easterly for a while as a depression moved into western Biscay. This depression gave us just a small amount of rain on the 22<sup>nd</sup>, before it started to fill, eventually being absorbed by a new one coming in from the south-west. For much of the 23<sup>rd</sup> the weather was cloudy, but dry with light winds. Late in the day rain from the next weather system arrived, persisting through the night with heavy rain at times around dawn on the 24<sup>th</sup>. The rain eased off during the morning and it was dry by the afternoon with some warm sunshine. The next day was also warm, but with thunder and heavy rain late on.

After this, the pattern began to change, with high pressure coming more into evidence at last. With this



## September

A ridge of high pressure, extending from an anticyclone to the north-east of the Azores, gave a sunny start to the month. As it pushed farther north-east our winds became easterly, pulling in very warm air off France. The anticyclone remained dominant for the following three days, with similar weather persisting. By the 6<sup>th</sup> thundery low pressure over France had drifted north, bringing our winds around to the north. The change of wind direction brought in sea fog from the Channel, which stayed with us for most of the day, holding temperatures at much lower values than on preceding days.

Over the following couple of days weak fronts encroached from the west, bringing the first rain of the month, before a new anticyclone moved in from the south-west. This gave a sunny day on the 9<sup>th</sup> and it became very warm again on the 10<sup>th</sup> as winds swung around to the east once more. This time the warmth was brief, with the high transferring rapidly to Scandinavia, to allow a front to edge in from the Atlantic. This front, though weak, brought in cloud and some rain late on the 11<sup>th</sup>. By dawn on the 12<sup>th</sup> we were in a much fresher airstream to the rear of the front. Having cleared through this front slowed down over France, edging back westwards at times to bring increasing cloud on occasion during the following two days.

A transient ridge of high pressure resulted in light winds and clear skies on the night the 14<sup>th</sup>/15<sup>th</sup>. These conditions allowed the temperature to fall to its lowest for the month, with the temperature on the ground dropping close to 0°C. After one more quiet and sunny day, the weather pattern began to turn unsettled. Fronts brought rain during the early morning of the 16<sup>th</sup>, before brighter weather returned for the afternoon. On the 17<sup>th</sup>, despite a potentially showery south-west flow, we managed a mainly sunny and reasonably warm day.

Much more active weather systems were soon about to make their presence felt, with rain arriving around dawn the next day, with heavy rain at times from late morning onwards. The deep depression responsible for this rain also brought strong winds, especially noticeable after the light winds earlier in the month. Once the persistent rain had cleared we were left in a showery southerly airflow, with the main low near south-west Ireland filling slowly and drifting south-east. Over the next couple of days changes were slow, with the initial low disappearing as a new one moved north across France.

By the 22<sup>nd</sup> warm air was spreading north over Biscay, with very warm air sweeping through much of France. The air over and to the west of the Islands was very unstable, with an intense area of thunderstorms moving north-east across western Brittany. These reached here during the late morning, producing some torrential rain up the west coast, but drier conditions on the east. There was one reliable report of around 40mm(1.57in) of rain falling in less than one hour. This deluge was followed by some warm sunshine in the afternoon. The next morning it was the turn of the eastern half of Guernsey to have heavy rain, with some flooding reported from St. Peter Port.

A slight rise of pressure on the 24<sup>th</sup> allowed us a reasonably sunny and warm day, in contrast to a large area of England and Wales, which suffered long spells of heavy rain. We managed to remain dry on the 25<sup>th</sup> and much of the 26<sup>th</sup> as well, although it was cooler. Fronts reached us on the evening of the 26<sup>th</sup>, bringing a spell of heavy rain. The next day was mainly cloudy with showers in the afternoon and heavy showers in the evening. The showery flow was replaced on the 28<sup>th</sup> by a frontal system, which gave rain and drizzle during afternoon, before clearing away by midnight. Despite fronts having cleared through, the 29<sup>th</sup> was a cloudy day with some light showers. To finish off we had the windiest day of the month, but it was at least generally dry with sunny periods.

## October

Low pressure, centred to the south of Iceland, was the dominant feature on the weather charts at the start of the month. This situation resulted in fresh to strong west to south-west winds blowing up the Channel, giving a mixture of sunny spells and showers. There was a short period of heavy rain on the passage of a cold front around dawn on the 2<sup>nd</sup>, this was also marked by a noticeable drop in temperature. By the 3<sup>rd</sup> the main area of low pressure was centred between Scotland and Norway, allowing polar air to move south over western Britain. Initially we had showers, with a brief thunderstorm early on the 3<sup>rd</sup>. Subsequently, as pressure began to rise, the showers died out to allow sunny conditions to prevail, resulting in more than 10 hours of sunshine on the 4<sup>th</sup>, although, it was a rather cool day.

During the following two days an anticyclone moved in to cover the whole of the British Isles, maintaining generally dry and sunny conditions, although with temperatures slightly below normal. The high then drifted south, allowing fronts to push into western Britain. Pressure remained high over the Channel Isles, so that whilst fronts did encroach, they were weak and produced only small amounts of drizzle, but bringing



accompanying hill fog patches. The next day saw further drizzle and fog, which took until the early hours of the 11<sup>th</sup> to clear properly, following the passage of a cold front.

A new anticyclone subsequently moved into southern England, staying in place for three days, before edging north. We managed four dry days, with long spells of sunshine, but temperatures fell back once more. By the early hours of the 15<sup>th</sup> the centre of the high had moved as far as The Shetlands, with a trough pushing north-east through Brittany, bringing a spell of rain. More rain came along in the afternoon, this time accompanied by hill fog. By the 16<sup>th</sup> pressure was high over Scandinavia, and low over western Biscay. This gave a light easterly flow over the Islands and with some sunshine it became rather warm for a while. The next three days were sunnier and dry, but gradually it turned colder as a strengthening breeze set in. The 19<sup>th</sup> was the coldest day of the month, despite nearly nine hours of sunshine.

On the 20<sup>th</sup> fronts began to push up from the south, as a low swung into southern Biscay. This ensured cloudy conditions with some rain and it was still rather cool. The low then moved slowly north, but was soon absorbed by a large depression in the central Atlantic. Fronts from this depression reached us in the evening, bringing a period of heavy rain. This main low stayed in the Atlantic for another four days, drifting slowly east whilst filling. A series of troughs moving around the low brought spells of rain, or showers, therefore keeping it mainly cloudy. A southerly flow, though, ensured that temperatures were above normal.

On the 23<sup>rd</sup>, a secondary low started to deepen as it approached north-west Spain. While crossing the Bay of Biscay the low continued to deepen, eventually passing close to the Bailiwick early on the 24<sup>th</sup>. Associated with the low there was heavy rain and in its wake, winds picked up to gale force for a short time, with a maximum gust here of 58 knots. As the low moved away the cloud broke up to allow sunshine that afternoon. Overnight skies were generally clear and winds fell light. These conditions prevailed through the next morning, which permitted a sharp rise of temperature, before clouding over in the afternoon, with heavy showers by the evening.

Pressure then started to rise above 1000mb as a ridge began to extend north-east from the Azores. This build of pressure resulted in a couple of dry days, with a reasonable amount of sunshine. Winds were also light, thus ensuring some pleasant autumn weather. Early on the 28<sup>th</sup> a minor trough brought some unexpected rain and was followed by rather moist air. The moist air stayed with us through the next 48 hours, keeping the weather misty. The night of the 28<sup>th</sup>/29<sup>th</sup> was clear for a while, but low cloud spread in from France, lowering gradually to give fog for a time on the morning of the 29<sup>th</sup>. After the fog had cleared, very mild air was swept north across the area. We kept this very mild air until the afternoon of the 30<sup>th</sup>, when a cold front went through, bringing a burst of heavy rain. To end the month we managed sunny conditions, with the temperature well above normal.

## **November**

A south-west to southerly airstream covered the area on the 1<sup>st</sup>. A depression moving rapidly north-east over western Biscay and its associated warm front, brought some very mild air to the Bailiwick, resulting in a new November temperature record at the Airport. The following cold front was marked by a short burst of heavy rain and a sharp drop in temperature. During the next couple of days a ridge of high pressure extended north-east from the Azores, keeping fronts well away from us to ensure dry conditions, with sunny spells and temperatures above normal. By the 4<sup>th</sup> the centre of high pressure had moved to central Europe, with south-east winds bringing in cooler air, but it remained dry and mainly sunny.

The pressure had fallen markedly by the early hours of the 5<sup>th</sup> as a complex set of fronts and their associated depression pushed into Ireland. It was very mild for a while, before the fronts reached us to give a period of heavy rain. Winds also increased almost to gale force, resulting in the postponement of most Bonfire night activities. After an early shower, the next day was sunny, but rather cool with the winds decreasing gradually through the day. A developing anticyclone then moved into the Bay of Biscay, however, a weak warm front ensured that the weather was mainly cloudy with some light rain or drizzle.

High pressure became the dominant feature on the weather charts over the following week. From its position over Biscay the high transferred slowly north, whilst a new high formed near Northern Ireland, eventually absorbing the initial high cell. A weak cold front cleared through on the 9<sup>th</sup>, following which the temperature began to drop as a north to north-east wind set in. The highest pressure was reached on the 10<sup>th</sup>, before the anticyclone started to decline, although maintaining its position for several days. During the same period low pressure from Spain started to edge north, resulting in a tightening pressure gradient over the Channel; a situation which brought us three days of strong north-east winds. The weather was at times cloudy, with a few showers despite high pressure.



weak fronts moving south in the flow. Within a couple of days the ridge over Britain had declined, with the dominant high now in the central Atlantic and a north-west winds blowing across the British Isles. This situation ensured cool and showery conditions, with the passage of a small low bringing a period of heavy rain early on the 18<sup>th</sup>.

A northerly flow introduced colder air to the Bailiwick on the 19<sup>th</sup>, with a mixture of sunny spells and wintry showers. A veer in the airflow to the north-east brought increased cloud development, with showers arriving on the evening of the 20<sup>th</sup>. Overnight these showers merged to produce several hours of continuous rain, resulting our wettest day of the month. Most of this rain was confined to the English Channel, with only a small amount falling in Jersey and on the south coast of England. A gloomy and damp day on the 21<sup>st</sup> saw the temperature stuck between 4 and 5°C, however, this cold weather was brief as the wind backed to the west, allowing in mild air from the Atlantic.

A band of frontal cloud crossed the area on the afternoon of the 22<sup>nd</sup>, giving some rain, before clearer conditions arrived that evening. Over the next two days a ridge, extending from a high in the Atlantic, pushed into France. This kept fronts away from the Islands and allowed some reasonably sunny weather, with south-west to west winds maintaining the mild conditions. Eventually the pressure started to fall over the Bay of Biscay, so that a cold front could at last encroach, reaching us on the evening of the 26<sup>th</sup>. After a short spell of rain, the cloud soon broke up and the following day was mainly sunny until late afternoon.

For the 28<sup>th</sup> and 29<sup>th</sup> pressure stayed high over and to the east of the Alps, with a trailing front lying from northern Scotland down to near Madeira. In the southerly flow so produced we experienced cloudy conditions, with some rain or drizzle from time to time. Temperature remained above normal, but with the cloud ensuring only small changes between day and night. The final clearance of frontal cloud just before dawn on the 30<sup>th</sup> saw a rapid drop in temperature, which resulted in a touch of ground frost at the Airport. For most of the day it was sunny and with light winds the temperature rose well from its early chill.

## December

A weakening frontal system was moving south-east across the United Kingdom on the 1<sup>st</sup>, this gave us a cloudy, but mild start to the month with some rain and drizzle. A transient high kept the 2<sup>nd</sup> dry with several hours of sunshine and it remained mild. A new set of fronts were soon crossing the British Isles, but they had weakened by the time they reached the Channel. Once the cold front had cleared a showery airstream set in for a short while, making it colder, although with some sunshine. The 5<sup>th</sup> was a mainly sunny day with just a light shower in the afternoon, before cloud from the next front arrived that evening.

The passage of a cold front early on the 7<sup>th</sup> brought rain, drizzle and some hill fog, followed by sunny periods and showers. The next low moved rapidly east towards Scotland on the 8<sup>th</sup>, before slowing down by the time it reached the Outer Hebrides. The associated fronts gave a period of heavy rain on the evening of the 8<sup>th</sup>, before clearing to leave us in a showery airflow. We stayed in this showery air as the low moved slowly north-east towards Scandinavia. Temperatures were close to normal, with sunny spells and a few showers.

The next low took a more southerly track, with an active warm front bringing heavy rain on the evening of the 10<sup>th</sup>, followed by a dull, windy and wet day on the 11<sup>th</sup>. The rain finally cleared away early on the 12<sup>th</sup>, only to be followed by heavy showers with hail and lightning. Showers continued on the 13<sup>th</sup>, again with hail and also some thunder late that morning. By the next morning winds had veered, introducing colder air and a further veer in the wind dragged in even colder air by the evening. Showers overnight were a mixture of rain, hail and sleet. These, though, moved away quickly to leave us with a mainly sunny, but cold day on the 15<sup>th</sup>.

By the 16<sup>th</sup> fronts were moving south-east over Britain, cutting off the supply of cold air, although it stayed dry here until dawn on the 17<sup>th</sup>. Rain and, or, drizzle was with us from then until early on the 19<sup>th</sup>, with some hill fog patches as well. Whilst we experienced mild conditions, much colder air was in evidence over much of the British Isles and this finally reached as the rain cleared away on the 19<sup>th</sup>. The temperature fell from a mild 11.6°C at midnight on the 18<sup>th</sup> to 5.0°C by the following dawn. The rest of the day was fine, but cold, with a fresh breeze easing off during the day. The following night was clear and with a light wind veering easterly a ground frost developed, with an air frost in sheltered spots.

Cloud from the next set of fronts began to encroach on the afternoon of the 20<sup>th</sup>, although rain did not arrive until the early hours of the 21<sup>st</sup>. With south-east winds it remained cold through the day, before temperatures rose overnight as the flow became more southerly. The 22<sup>nd</sup> was a dull day, with heavy rain in the evening, however by then it had turned much milder. The clearance of fronts early on the 23<sup>rd</sup> allowed us a sunny day before the arrival of cloud from the next weather system. Rain began shortly before midnight, soon becoming heavy. For a while during the late morning the rain was light, but by the evening on Christmas Eve it



Christmas Day saw a mix of sunny intervals and thundery rain and hail showers. A new depression then moved very rapidly east through the Bailiwick overnight, bringing yet more heavy rain. To the south of this depression winds were very strong, resulting in the damaging storms that passed through Paris during the day. Winds were gale force here for a while in the afternoon, but the highest gust was only 72mph compared to gusts of over 100mph reported from France.

Another low crossed Brittany on the 27<sup>th</sup>, giving more rain, with further damaging storms for France. Conditions had brightened by the 28<sup>th</sup>, with sunshine in the afternoon. For a change the day was dry and the 29<sup>th</sup> was dry and sunny, with only a light to moderate breeze. This dry interlude was brief with rain reaching us by midday on the 30<sup>th</sup>. Any rain or drizzle on the 31<sup>st</sup> was light and winds remained light through the day. For the New Year's Eve celebrations it stayed dry and mild, with nothing to dampen things until well into the 1<sup>st</sup> of January.

## ANNUAL WEATHER SUMMARY

MONTH	MEAN AIR TEMPERATURE °C		RAINFALL mm		SUNSHINE hrs	
	1999	DIFFERENCE FROM AVERAGE	1999	PERCENTAGE OF AVERAGE	1999	PERCENTAGE OF AVERAGE
JAN	8.0	+1.8	115.1	119.5	63.5	120.7
FEB	7.1	+1.2	70.0	88.3	81.4	102.9
MAR	8.3	+1.3	65.0	92.6	170.8	130.1
APR	9.8	+1.3	96.6	187.9	166.2	90.9
MAY	8.1	+2.1	20.5	40.4	237.7	101.6
JUN	14.1	+0.2	66.1	142.5	272.1	113.7
JUL	17.3	+1.4	3.9 *	10.5	264.4	105.3
AUG	17.2	+1.0	93.0	203.9	207.5	91.9
SEP	16.5	+1.5	73.4	114.5	185.5	110.2
OCT	12.9	+0.3	74.9	88.2	132.0	112.6
NOV	9.9	+0.6	50.5	50.5	84.6	118.0
DEC	8.1	0.7	249.6	238.4	54.8	107.2
YEAR	11.9	+1.1	978.6	117.5	1920.5	106.4

\* NEW RECORD



## SUNSHINE

MONTH	SUNSHINE (hours)					SUNNIEST DAY		% OF POSSIBLE SUN		SUNLESS DAYS	
	1999	AVERAGE 1961-90	RECORD HIGHEST	YEAR	RECORD LOWEST	YEAR	1999 DATE	1999	AVERAGE 1961-90	1999	AVERAGE 1961-90
JAN	63.5	52.6	112.8	1998	26.0	1966	7.5 31st	23.6	19.5	10	11.5
FEB	81.4	79.1	140.9	1959	36.1	1976	8.3 22nd	27.6	26.9	7	7.5
MAR	170.8	131.3	206.1	1973	67.4	1964	10.8 16th, 17th	46.5	35.7	1	5.2
APR	166.2	182.9	280.4	1984	122.2	1981	12.3 28th	40.7	44.8	0	2.6
MAY	237.7	233.9	336.4	1989	136.9	1981	14.8 26th	50.3	49.5	1	1.8
JUN	272.1	239.3	355.3	1975	147.8	1977	15.0 18th	56.5	49.7	0	2.2
JUL	264.4	251.2	335.9	1959	167.7	1972	15.2 9th	54.6	51.8	1	1.3
AUG	207.5	225.9	323.0	1955	139.2	1992	13.1 3rd	46.9	51.0	1	1.4
SEP	185.5	168.4	266.5	1959	104.5	1956	12.5 2nd	49.2	44.7	0	2.6
OCT	132.0	117.2	176.4	1971	72.6	1968	10.2 4th	39.8	36.1	2	4.7
NOV	84.6	71.7	117.7	1988	38.9	1981	8.3 6th	31.2	26.4	5	6.9
DEC	54.8	51.1	98.5	1962	26.6	1966	6.2 29th	21.5	20.0	11	11.5
YEAR	1920.5	1804.5	2262.8	1959	1532.5	1981	15.2 09-Jul	43.1	40.5	39	59.0

## ATMOSPHERE PRESSURE (Millibars) AT MEAN SEA LEVEL

MONTH	MEAN PRESSURE					EXTREME PRESSURE					
	1999	AVERAGE 1961-90	RECORD HIGHEST	YEAR	RECORD LOWEST	YEAR	RECORD HIGHEST	DATE & TIME G.M.T.	RECORD LOWEST	DATE & TIME G.M.T.	
JAN	1015.0	1016.2	1030.5	1992	1001.1	1948	1045.9	30/1989 0945	966.6	20/1965 1220	
FEB	1022.4	1015.6	1032.1	1959	1003.5	1966	1047.5	7/1964 1050	952.5	25/1989 1050	
MAR	1012.6	1016.1	1029.9	1953	1003.0	1947	1047.7	3/1990 0930	969.6	13/1951 1630	
APR	1014.0	1015.6	1025.1	1954	1002.6	1998	1040.2	10/1947 0800	979.5	16/1998 1620	
MAY	1016.0	1015.7	1025.3	1991	1007.8	1983	1036.1	22/1991 0900	993.5	17/1955 0850	
JUN	1018.6	1018.0	1024.5	1962	1009.5	1997	1037.5	14/1959 0850	988.9	9/1954 1500	
JUL	1018.6	1018.8	1023.5	1969	1013.9	1988	1034.5	12/1969 1150	986.6	3/1988 0845	
AUG	1013.5	1017.6	1022.0	1981	1011.9	1963	1036.1	12/1949 0930	982.3	9/1948 0000	
SEP	1009.9 *	1017.7	1024.2	1977	1010.2	1998	1037.3	22/1947 0700	974.7	13/1993 0630	
OCT	1014.8	1016.4	1024.5	1971	1003.9	1960	1040.0	26/1969 2200	959.5	16/1987 0200	
NOV	1023.3	1015.7	1026.2	1978	1003.0	1963	1040.5	30/1980 2345	965.0	19/1996 1720	
DEC	1013.4	1016.2	1029.5	1991	1000.6	1978	1046.0	25/1991 0950	964.2	8/1954 1450	
YEAR	1015.9	1016.6	1019.8	1949	1013.4	1960	1047.7	03/02/90 0930	952.5	25/02/89 1050	

## RAINFALL

MONTH	RAINFALL mm					WETTEST DAY		RAIN DAYS (≥0.2mm)		WET DAYS (≥1.0mm)	
	1999	AVERAGE 1961-90	RECORD HIGHEST	YEAR	RECORD LOWEST	YEAR	1999 DATE	1999	AVERAGE 1961-90	1999	AVERAGE 1961-90
JAN	115.1	96.3	190.4	1988	15.4	1992	21.8 15th	22	20.0	18	15.8
FEB	70.0	79.3	182.8	1978	4.8	1965	12.9 19th	12	15.9	10	12.3
MAR	65.0	70.2	160.2	1947	2.7	1961	12.8 3rd	17	16.1	11	12.2
APR	96.6	51.4	130.4	1966	2.9	1980	12.7 20th	20	13.3	17	9.9
MAY	20.5	50.8	128.7	1994	4.1	1989	11.2 17th	9	12.4	5	9.4
JUN	66.1	46.4	129.7	1986	0.6	1976	22.1 28th	14	10.3	11	6.8
JUL	3.9 *	37.3	120.2	1960	6.6	1983	2.6 4th	3 *	9.6	1 *	6.5
AUG	93.0	45.6	122.0	1951	3.8	1955	17.8 23rd	14	11.1	12	7.6
SEP	73.4	64.1	194.5	1952	6.9	1997	20.0 18th	14	13.1	11	9.6
OCT	74.9	84.9	233.9	1960	3.4	1978	19.8 23rd	15	15.3	12	11.9
NOV	50.5	102.1	192.5	1965	16.1	1978	18.9 20th	15	19.0	9	14.9
DEC	249.6 *	104.7	227.2	1965	28.1	1953	34.6 24th	25	19.1	24	15.4
YEAR	978.6	833.1	1317.0	1960	531.3	1989	34.6 24-Dec	180	175.1	141	132.0

## TEMPERATURE °C

MONTH	MEAN MAXIMUM		HIGHEST MAXIMUM				MEAN MINIMUM		LOWEST MINIMUM			
	1999	AVERAGE 1961-90	1999	DATE	RECORD HIGHEST	DATE	1999	AVERAGE 1961-90	1999	DATE	RECORD LOWEST	DATE
JAN	9.7	8.1	12.6	4th	13.3	4/1948	6.4	4.4	1.7	10th	-7.8	20/1963
FEB	9.1	7.8	12.7	24th	15.0	29/1948	5.2	4.0	0.3	14th	-7.2	21/48,7/91
MAR	10.7	9.2	15.9	31st	19.4	29/1965	5.9	4.7	2.5	10th	-2.2	10,11/1958
APR	12.1	11.0	15.6	30th	23.0	22/1984	7.6	6.0	1.7	15th	-1.4	11/1986
MAY	16.2	14.0	23.0	29th	25.7	5/1995	10.3	8.4	6.8	2nd	0.1	2/1979
JUN	16.9	16.8	21.7	16th	30.8	26/1976	11.3	10.9	8.7	5th	5.4	1/1975
JUL	20.3	18.9	25.7	25th	31.7	1/1952	14.4	12.9	12.0	18th	8.3	8/1954
AUG	19.7	19.0	23.1	2nd	32.8	3/1990	14.7	13.4	13.0	11th	9.2	28/1986
SEP	19.0	17.5	24.8	5th	30.6	2/1961	14.0	12.5	10.0	15th	5.8	28/1974
OCT	15.1	14.7	16.8	25th	23.3	4,5/1959	10.7	10.5	7.5	20th	3.9	30/1983 (18/52,19/85 22,29/93
NOV	11.8	11.2	16.8 *	1st	16.7	6/1955	8.1	7.4	3.4	21st	0.0	
DEC	10.2	9.3	12.3	22nd	15.6	6/1953	6.0	5.6	0.7	20th	-3.8	24/1963
YEAR	14.3	13.1	25.7	25-Jul	32.8	03/08/90	9.6	8.4	0.3	14-Feb	-7.8	20/01/63

MONTH	MEAN DAILY AIR TEMPERATURE						MEAN DAILY RANGE					
	1999	AVERAGE 1961-90	RECORD HIGHEST	YEAR	RECORD LOWEST	YEAR	1999	AVERAGE 1961-90	RECORD HIGHEST	YEAR	RECORD LOWEST	YEAR
JAN	8.0	6.2	8.6	1993	1.5	1963	3.3	3.7	4.7	1984	3.1	1957,66,76,91,96
FEB	7.1	5.9	9.0	1990	1.5	1986	3.9	3.8	4.6	1988	3.0	1986
MAR	8.3	7.0	10.3	1957	4.4	1962	4.8	4.5	6.4	1953	3.7	1964,81,88
APR	9.8	8.5	10.9	1961	6.4	1986	4.5	5.0	6.3	1984	3.7	1994
MAY	8.1	11.2	13.9	1989	9.9	1984	5.9	5.6	7.3	1989	4.6	1981
JUN	14.1	13.9	16.7	1976	11.3	1972	5.6	5.8	8.3	1976	4.1	1977
JUL	17.3	15.9	19.4	1983	13.8	1954	5.9	6.0	7.9	1983	4.4	1954
AUG	17.2	16.2	19.1	1995	14.3	1956	5.0	5.6	7.3	1955	4.3	1958
SEP	16.5	15.0	17.5	1949	12.8	1986	5.0	5.0	6.1	1961	3.6	1967
OCT	12.9	12.6	14.7	1995	9.6	1974	4.4	4.2	5.1	1947	3.5	1968
NOV	9.9	9.3	12.0	1994	7.7	1993	3.7	3.8	4.9	1969	2.8	1994
DEC	8.1	7.4	10.1	1953	4.6	1950	4.2	3.7	4.5	1968	2.8	1987
YEAR	11.9	10.8	12.1	1989	9.6	1963	4.7	4.7	5.2	1949,89,90	4.3	1977

MONTH	LOWEST GRASS MINIMUM TEMPERATURE				DAYS WITH AIR FROST				DAYS WITH GRASS MINIMUM BELOW 0°C			
	1999	DATE	RECORD LOWEST	DATE	1999	AVERAGE 1961-90	RECORD HIGHEST	YEAR	1999	AVERAGE 1961-90	RECORD HIGHEST	YEAR
JAN	-4.8	12th	-10.0	29/1947	0	2.5	16	1963	3	7.4	20	1985
FEB	-5.7	14th	-11.1	12/1978	0	2.6	18	1986	8	7.8	24	1956
MAR	-3.3	10th	-9.4	3/1965	0	0.6	4	1947	8	7.0	18	1955
APR	-3.7	19th	-7.0	5/1990	0	0.1	1	1978,86	3	4.5	10	1984
MAY	2.1	26th	-5.6	5/1979	0	0.0	--		0	2.0	9	1979
JUN	2.7	22nd	-3.0	14/1987	0	0.0	--		0	0.3	3	1987,89
JUL	5.1	18th	1.0	7/1996	0	0.0	--		0	0.0	--	
AUG	7.2	31st	0.8	11/1981	0	0.0	--		0	0.0	--	
SEP	1.0	15th	-1.0	23/1979	0	0.0	--		0	0.1	1	1979,86,87
OCT	1.2	7th	-4.0	30/1983	0	0.0	--		0	0.5	6	1992
NOV	-1.3	30th	-5.6	29/1987	0	0.0	--		1	3.3	9	1988
DEC	-4.1	20th	-8.9	29/1964,27/1995	0	1.0	5	1970	3	5.4	10	1976



## NUMBER OF DAYS WITH

MONTH	FOG					THUNDER				
	1999	AVERAGE 1961-90	RECORD HIGHEST	YEAR	RECORD LOWEST	YEAR	1999	AVERAGE 1961-90	RECORD HIGHEST	YEAR
JAN	7	5.8	13	1955,82	2	1963,67,72,74,92	0	0.7	4	1979,98
FEB	6	6.0	15	1979	0	1969	0	0.5	3	1957,89
MAR	10	7.2	16	1960,94	0	1968,73	0	0.4	4	1958,67,82,87,95
APR	9	6.4	16	1963	2	1976,90	1	0.4	4	1981,95
MAY	9	7.2	19	1964	2	1988	2	1.1	4	1950,71
JUN	9	10.2	18	1965	1	1975	1	1.2	6	1982
JUL	10	10.3	20	1972,78	4	1966	0	1.3	5	1982,94
AUG	8	8.8	21	1997	2	1976	3	1.2	5	1974
SEP	4	6.2	15	1987	0	1952,53,72	1	1.1	10	1976
OCT	6	3.9	17	1986	0	1971,73	3	1.3	5	1964
NOV	1	3.1	14	1992	0	-	0	0.9	4	1969
DEC	5	4.1	11	1995	0	1947,64,75	2	0.8	4	1976,93
YEAR	84	79.2	115	1994	55	1989	13	11.0	21	1982,95

MONTH	SNOW OR SLEET				HAIL			
	1999	AVERAGE 1961-90	RECORD HIGHEST	YEAR	1999	AVERAGE 1961-90	RECORD HIGHEST	YEAR
JAN	2	3.4	12	1963,85	5	5.1	13	1984,85
FEB	2	4.5	18	1956	1	3.4	13	1988
MAR	0	2.7	10	1962,70	6	3.7	9	1979
APR	1	0.8	4	1970	4	2.4	10	1994
MAY	0	0.1	3	1979	0	0.6	3	1955,82
JUN	0	0.0	-	-	0	0.1	1	1986,87
JUL	0	0.0	-	-	0	0.1	1	1971,87,94
AUG	0	0.0	-	-	0	0.2	1	-
SEP	0	0.0	-	-	0	0.4	2	1973,74,84
OCT	0	0.0	-	-	0	1.6	7	1992
NOV	0	0.7	5	1980	4	4.2	8	1979,85,87,91
DEC	2	2.1	8	1962,70	9	3.9	10	1979,82,86,93
YEAR	7	14.6	30	1962,63,70,79	29	25.7	50	1986
							10	1964

MONTH	RAIN DAYS( $\geq 0.2$ mm)				WET DAYS( $\geq 1.0$ mm)			
	1999	RECORD HIGHEST	YEAR	RECORD LOWEST	YEAR	1999	RECORD HIGHEST	YEAR
JAN	22	31	1948	4	1992	18	28	1948
FEB	12	26	1970,95	2	1959	10	23	1951
MAR	17	27	1979	3	1961	11	21	1947
APR	20	26	1998	3	1976	17	21	1998
MAY	9	26	1981	2	1989	5	19	1981
JUN	14	21	1991	3	1975,76	11	14	1987,91
JUL	3 *	20	1960	4	1954,69,79,83	1 *	15	1950
AUG	14	21	1963	1	1976	12	18	1992
SEP	14	23	1950,52	4	1959,97	11	21	1950
OCT	15	28	1981	5	1965,78	12	24	1981
NOV	15	27	1960	8	1978	9	25	1960

## WIND SPEED

MONTH	MEAN SPEED (KNOTS)		NUMBER OF DAYS OF GALES				HIGHEST GUST (KNOTS)			
	1999	AVERAGE 1961-90	1999	AVERAGE 1961-90	RECORD HIGHEST	YEAR	1999	DATE	RECORD HIGHEST	DATE
JAN	13.7	14.9	1	2.7	11	1984	58	3rd	77	25/1990
FEB	13.0	14.0	0	1.6	10	1990	46	22nd	69	9/1988,11/1990
MAR	10.5	13.0	0	1.1	6	1980	42	3rd	70	10/1982
APR	12.5	12.2	0	0.3	2	1964,72,83,94 1954,55,58,62	45	29th	60	9/1994
MAY	10.6	11.3	0	0.1	1	1962,72,79,96	43	17th	58	19/1996
JUN	10.0	10.5	0	0.0	0	-	36	2nd	51	16/1965
JUL	10.2	10.3	0	0.0	1	1956,69	43	27th	63	31/1983
AUG	8.2	10.3	0	0.1	1	1956,61,86	39	18th	52	26/1986
SEP	10.1	11.3	0	0.3	2	1953,65,74,83	37	30th	60	29/1962
OCT	11.7	12.5	1	0.8	4	1967,76	58	24th	81	16/1987
NOV	12.9	14.1	0	1.7	8	1977	44	5th	73	23/1984
DEC	16.9	14.9		2.3	9	1979	63	26th	83	15/1979
YEAR	11.7	12.4	2	11.1	20	1972	63	26-Dec	83	15/12/79



## PERCENTAGE FREQUENCIES OF HOURLY MEAN WIND SPEED AND DIRECTION 1999

MONTH	DIRECTION RANGE	350 -010	020 -040	050 -070	080 -100	110 -130	140 -160	170 -190	200 -220	230 -250	260 -280	290 -310	320 -340	SPEED ONLY
	SPEED RANGE													
JAN	0-3 knots	-	-	-	-	-	-	-	-	-	-	-	-	4.8
	4-10 knots	3.1	5.9	1.6	0.1	1.3	5.0	2.0	4.0	2.4	0.7	0.5	1.6	28.4
	11-21 knots	1.2	2.7	0.3	0.3		0.1	13.7	14.0	8.2	7.7	7.1	1.6	56.9
	22-33 knots							0.5	5.9	1.3	1.1	0.7		9.5
	≥34 knots									0.1	0.3			0.4
	DIRECTION ONLY	4.3	8.6	1.9	0.4	1.3	5.1	16.3	23.9	12.1	9.7	8.3	3.2	
FEB	0-3 knots	-	-	-	-	-	-	-	-	-	-	-	-	5.5
	4-10 knots	4.8	3.6	0.6	1.2	1.2	1.2	0.9	3.6	1.0	3.9	3.3	4.0	29.2
	11-21 knots	2.8	0.7	1.3				1.6	5.7	7.3	13.7	14.3	10.1	57.6
	22-33 knots			0.1					0.1	1.5	3.0	2.8	0.1	7.7
	≥34 knots													
	DIRECTION ONLY	7.6	4.3	2.1	1.2	1.2	1.2	2.5	9.4	9.8	20.5	20.4	14.3	
MAR	0-3 knots	-	-	-	-	-	-	-	-	-	-	-	-	7.1
	4-10 knots	5.5	7.9	3.1	1.9	3.2	4.6	4.0	3.6	2.7	2.7	2.7	3.6	45.6
	11-21 knots	0.8	0.8	1.7	4.3	1.7	0.9	2.8	2.7	6.5	5.2	6.9	9.8	44.2
	22-33 knots								1.1	1.2	0.4	0.4		3.1
	≥34 knots													
	DIRECTION ONLY	6.3	8.7	4.8	6.2	5.0	5.5	6.9	7.4	10.3	8.3	9.9	13.4	
APR	0-3 knots	-	-	-	-	-	-	-	-	-	-	-	-	2.2
	4-10 knots	0.6	0.8	1.9	1.9	4.0	6.8	2.9	4.7	4.4	4.2	5.8	2.8	41.0
	11-21 knots	0.6	3.3	3.2	0.4	1.0	6.1	1.9	4.6	8.5	7.1	8.6	3.1	48.3
	22-33 knots		0.3	4.2					0.3	0.3	2.2	1.1	0.1	8.5
	≥34 knots													
	DIRECTION ONLY	1.1	4.4	9.3	2.4	5.0	12.9	4.9	9.6	13.2	13.5	15.6	6.0	
MAY	0-3 knots	-	-	-	-	-	-	-	-	-	-	-	-	4.4
	4-10 knots	1.6	4.8	7.4	2.8	3.0	2.6	5.5	7.1	5.5	2.8	3.2	0.8	47.2
	11-21 knots		4.3	11.2	1.9	0.8	0.4	1.7	5.6	9.0	8.1	3.4		46.4
	22-33 knots		1.2	0.8										2.0
	≥34 knots													
	DIRECTION ONLY	1.6	10.3	19.4	4.7	3.8	3.0	7.3	12.8	14.5	10.9	6.6	0.8	
JUN	0-3 knots	-	-	-	-	-	-	-	-	-	-	-	-	5.7
	4-10 knots	5.7	5.4	3.5	0.7	1.5	1.4	3.8	3.6	2.5	2.4	3.6	15.7	49.7
	11-21 knots		0.1	4.9	2.2		0.7	1.7	6.9	13.3	5.8	6.7	1.8	44.2
	22-33 knots									0.4				0.4
	≥34 knots													
	DIRECTION ONLY	5.7	5.6	8.3	2.9	1.5	2.1	5.4	10.6	16.3	8.2	10.3	17.5	
JUL	0-3 knots	-	-	-	-	-	-	-	-	-	-	-	-	8.3
	4-10 knots	3.2	7.5	4.7	2.0	0.3	2.2	4.8	3.8	2.7	6.9	4.8	5.9	48.8
	11-21 knots		5.6	8.5	0.8			0.4	2.7	5.0	11.2	2.8		37.0
	22-33 knots			5.9										5.9
	≥34 knots													
	DIRECTION ONLY	3.2	13.2	19.1	2.8	0.3	2.2	5.2	6.5	7.7	18.0	7.7	5.9	
AUG	0-3 knots	-	-	-	-	-	-	-	-	-	-	-	-	13.2
	4-10 knots	1.3	0.8	2.0	4.3	6.3	7.8	6.6	5.0	5.5	6.9	4.8	7.8	59.1
	11-21 knots			3.0	5.0		0.8	0.1	2.7	8.7	5.8	0.1	0.4	26.6
	22-33 knots									0.7	0.4			1.1
	≥34 knots													
	DIRECTION ONLY	1.3	0.8	5.0	9.3	6.3	8.6	6.7	7.7	14.9	13.0	5.0	8.2	
SEP	0-3 knots	-	-	-	-	-	-	-	-	-	-	-	-	4.4
	4-10 knots	3.2	7.2	5.4	1.9	3.3	5.6	5.3	4.7	4.6	3.8	3.5	5.0	53.5
	11-21 knots		0.1	0.8			4.3	6.5	16.5	7.8	3.5	0.8	0.6	41.0
	22-33 knots									0.1	1.0			1.1
	≥34 knots													
	DIRECTION ONLY	3.2	7.4	6.3	1.9	3.3	9.9	11.8	21.3	12.5	8.2	4.3	5.6	
OCT	0-3 knots	-	-	-	-	-	-	-	-	-	-	-	-	6.0
	4-10 knots	2.3	2.2	4.3	4.8	5.0	4.6	1.2	1.9	3.4	3.8	1.3	2.2	36.8
	11-21 knots	0.3	0.1	11.2	7.8	0.9	4.7	5.8	3.2	8.5	7.7	1.9	2.2	54.2
	22-33 knots			0.4				0.1	0.1	1.5	0.5	0.1		2.8
	≥34 knots													0.1
	DIRECTION ONLY	2.6	2.3	15.9	12.6	5.9	9.3	7.1	5.2	13.4	12.0	3.4	4.3	
NOV	0-3 knots	-	-	-	-	-	-	-	-	-	-	-	-	4.0
	4-10 knots	1.9	4.0	1.4	0.6		2.1	2.8	2.6	4.0	6.5	3.1	2.2	31.3
	11-21 knots	6.4	13.2	3.9			2.5	10.6	6.0	4.2	2.8	5.8	5.0	60.3
	22-33 knots		0.4	1.8					0.1	0.6	0.7	0.4	0.1	4.4
	≥34 knots													
	DIRECTION ONLY	8.3	17.6	7.1	0.6		4.6	13.6	8.8	8.8	10.0	9.3	7.4	
DEC	0-3 knots	-	-	-	-	-	-	-	-	-	-	-	-	5.5
	4-10 knots		0.5	0.3	1.1	0.4	0.8	0.1	0.1	2.8	3.0	5.1	1.3	15.6
	11-21 knots	3.4	2.4	0.3	0.1		6.6	2.8	6.9	15.9	10.8	9.1	5.8	64.0
	22-33 knots			0.1				1.9	4.3	8.5	5.1	0.1	0.1	20.2
	≥34 knots									0.1	0.1			0.3
	DIRECTION ONLY	3.4	3.0	0.7	1.2	0.4	7.4	4.8	11.3	27.3	19.0	14.4	7.3	
	0-3 knots	-	-	-	-	-	-	-	-	-	-	-	-	5.5
	4-10 knots	2.8	4.2	3.0	2.0	2.5	3.7	3.3	3.7	3.5	3.9	3.5	4.4	40.6

**GUERNSEY AIRPORT MET OFFICE 1999****Days and Number of Hours with FOG (Vis <1000m) During Flying Hours**0520-2120 Local Time

DATE	JAN	FEB	MAR	APR	MAY	JUN	JUL	AUG	SEP	OCT	NOV	DEC	
1			6.0				2.5	2.0				0.5	
2			2.0										
3				8.0		0.5							
4	3.5			1.5									
5					4.0								
6				2.0			1.0	5.0	8.0				
7									0.5			0.5	
8				3.5				0.5			0.5		
9				2.0		0.5				0.5			
10				2.5						2.5			
11													
12													
13			1.5										
14			0.5					2.0					
15		0.5			2.0					1.5			
16										3.0			
17			0.5										
18			2.5				1.0					1.0	
19	1.0	4.5			5.5	1.5							
20	0.5	2.0		1.5		1.5							
21	2.0				0.5								
22									0.5			1.5	
23					3.5								
24	9.5							1.5					
25				1.5									
26													
27													
28						0.5		2.0		0.5			
29			5.5			6.0				3.5			
30			3.5		9.5		1.5	1.0					
31							8.0						
Tot Hrs	16.5	7.0	22.0	22.5	25.0	10.5	14.0	14.0	9.0	11.5	0.5	3.5	156.0
Tot Days	5	3	8	8	6	6	5	7	3	6	1	4	62

Averages for period 1988-1997

Hours	21.6	23.4	32.0	25.3	16.7	21.0	32.0	22.7	9.1	3.6	13.5	13.2	233.9
Days	5.2	5.9	7.7	6.5	4.9	6.8	9.1	8.2	3.3	2.2	3.6	4.0	67.4



**GUERNSEY AIRPORT MET OFFICE 1999****Days and Number of Hours with RVR<600m During Flying Hours**0520-2120 Local Time

DATE	JAN	FEB	MAR	APR	MAY	JUN	JUL	AUG	SEP	OCT	NOV	DEC	
1								0.5					
2			1.0										
3				5.0									
4	2.0												
5					1.0								
6				0.5				2.0	4.0				
7													
8				1.0									
9				0.5									
10				1.5						0.5			
11													
12													
13													
14								0.5					
15					1.0								
16										1.5			
17													
18			1.0										
19	0.5				3.0								
20	0.5												
21	0.5												
22													
23					3.0								
24	5.0												
25				0.5									
26													
27													
28								1.0					
29			5.0			2.0				1.5			
30			3.0		4.0								
31							1.5						
Tot Hrs	8.5	0.0	10.0	9.0	12.0	2.0	1.5	4.0	4.0	3.5	0.0	0.0	54.5
Tot Days	5	0	4	6	5	1	1	4	1	3	0	0	30

**Averages for period 1988-1997**

Hours	9.9	10.5	16.0	12.5	7.6	9.4	15.1	7.9	3.0	1.2	4.9	5.7	103.5
Days	2.5	2.9	4.4	4.0	2.9	3.6	5.5	5.1	1.5	0.7	1.9	1.7	36.7

## REPORT FOR ROCQUAINE

MONTH	TEMPERATURE °C						RAINFALL mm			MEAN RH% AT 9 a.m.	CLOUD OKTAS AT 9a.m.
	MEAN MAXIMUM	HIGHEST MAXIMUM	DATE	MEAN MINIMUM	LOWEST MINIMUM	DATE	1999	WETTEST DAY	DATE		
JAN	10.6	13.4	3rd	7.1	2.0	31st	102.2	18.6	15th	82.2	5.8
FEB	10.1	13.5	24th	6.2	-0.1	14th	55.4	13.5	26th	78.0	6.4
MAR	12.1	18.6	31st	6.5	1.9	10th	53.4	9.5	3rd	85.5	5.6
APR	13.6	17.5	30th	8.6	3.3	15th	88.8	11.8	23rd	83.3	5.7
MAY	17.6	23.8	29th	11.0	7.2	2nd	16.2	11.2	17th	81.9	5.3
JUN	18.2	23.3	25th	12.1	9.5	5th	57.9	15.6	28th	78.6	4.0
JUL	21.6	27.0	25th	14.8	12.2	24th	5.2	3.7	4th	80.0	4.4
AUG	20.9	24.0	7th	15.2	12.4	29th	82.7	16.9	7th	85.3	6.1
SEP	20.3	25.6	10th	14.6	11.3	10th	99.3	46.6	22nd	83.6	5.2
OCT	16.3	18.1	23rd	11.1	5.7	19th	54.6	15.5	23rd	82.2	5.7
NOV	12.8	17.4	1st	9.3	3.8	21st	47.9	18.2	20th	79.5	6.2
DEC	10.9	13.5	22nd	6.9	-1.0	20th	228.5	31.9	25th	79.1	6.1
YEAR	15.5	27.0	25-Jul	10.3	-1.0	20-Dec	892.1	46.6	22-Sep	81.6	5.5

## REPORT FOR L'ANCRESE

MONTH	TEMPERATURE °C						RAINFALL mm			SUNSHINE HRS
	MEAN MAXIMUM	HIGHEST MAXIMUM	DATE	MEAN MINIMUM	LOWEST MINIMUM	DATE	1999	WETTEST DAY	DATE	
JAN	11.1	14.1	4th	7.1	1.1	12th	104.2	17.5	15th	65.0
FEB	10.5	13.6	24th	5.3	-3.5	14th	40.6	13.1	26th	74.4
MAR	12.7	18.2	31st	5.8	0.0	15th, 28th	40.0	7.3	29th	165.5
APR	13.9	17.6	1st	8.0	2.6	15th	102.6	12.7	20th	168.1
MAY	17.6	23.5	29th	10.8	5.9	27th	11.4	8.7	17th	222.4
JUN	18.4	22.3	26th	11.4	7.4	12th	56.7	14.9	28th	276.9
JUL	21.4	24.6	2nd	14.7	10.1	24th	4.0	1.7	4th	259.7
AUG	21.3	23.3	7th	15.0	10.4	29th	97.9	16.3	4th	211.7
SEP	21.2	24.8	10th	14.5	10.4	2nd	80.7	27.7	18th	195.0
OCT	16.8	18.6	10th	11.0	4.5	25th	78.0	13.5	24th	135.9
NOV	13.3	17.4	1st	9.0	4.0	21st	48.7	18.2	20th	85.6
DEC	11.1	13.9	1st	6.8	0.2	20th	228.0	33.8	25th	53.1
YEAR	15.8	24.8	10-Sep	10.0	-3.5	14-Feb	892.8	33.8	25-Dec	1913.3

Note:- Sunshine figures have been adversely affected at times by a nearby tree and roof



**METEOROLOGICAL OBSERVATIONS AT GUERNSEY AIRPORT JANUARY 1999**

AY	DATE	BAROMETER	TEMPERATURE deg C						WIND				RAIN	SUN	WEATHER	
		mb	AIR			GRASS	SOIL		DIR'N	SPEED(knots)						
		at 9a.m.	MAX	MIN	MEAN	MIN	30cm	100cm	9a.m.	9a.m.	MEAN	MAX	mm	hrs		
RI	1	1005.7	10.0	7.9	9.0	5.2	8.0	8.7	190	11	15.2	42	8.5	5.0	Cloudy bec fair or fine. Cloudy evng, rain later	
AT	2	999.2	9.7	4.6	7.2	3.0	7.9	8.7	230	16	19.3	45	15.0	1.8	Ocnl hvy rain early, shwrs bec fine. Hvy shwrs midday, hail	
JN	3	<u>998.2</u>	11.0	6.7	8.9	3.8	7.5	8.7	260	<u>36</u>	21.3	<u>58</u>	6.3	1.7	Rain & drzl. Gale mid to late am. Fair bec cloudy. Rain evng, fog late	
ON	4	1007.9	<u>12.6</u>	9.2	10.9	6.8	8.2	8.7	220	19	15.5	36	1.7	NIL	Cloudy, ocnl rain & drzl am. Fog patches. Rain, drzl & fog evng	
JE	5	1012.7	11.8	<u>10.2</u>	<u>11.0</u>	7.8	<u>8.9</u>	8.6	180	14	12.5	24	NIL	7.3	Cloudy, mist & dew bec fair. Ocnl fine pm	
ED	6	1012.9	11.9	9.8	10.9	6.5	8.7	8.8	180	09	12.7	28	4.4	6.2	Fine, dew early. Bec fair pm. Cloudy evng. Rain late, hvy rain	
HU	7	1012.6	11.7	6.6	9.2	5.0	8.5	<u>8.9</u>	270	08	12.9	39	5.7	0.9	Slt rain early bec fair. Cloudy pm, rain ocnl mod. Fine later	
RI	8	1008.3	9.2	5.9	7.6	3.2	8.0	<u>8.9</u>	260	12	17.8	37	1.9	1.6	Fine bec fair to cloudy, shwrs. Hvy shwr & ice pellets early pm	
AT	9	1013.7	7.1	3.8	5.5	3.0	7.3	<u>8.9</u>	010	08	9.5	18	0.2	6.0	Fair bec cloudy. Slt shwr, ice pellets am. Bec fair	
JN	10	1015.2	<u>4.6</u>	<u>1.7</u>	<u>3.2</u>	-0.2	6.5	8.7	090	12	10.7	26	1.6	1.7	Fair bec mainly cloudy. Shwrs, sleet, ice pellets or snow evng	
ON	11	1017.7	5.5	2.4	4.0	0.9	5.8	8.6	020	12	11.4	29	TR	5.1	Mainly cloudy. Shwr of ice pellets early bec fair. Slt snow shwr	
JE	12	1011.3	8.2	2.0	5.1	<u>-4.8</u>	<u>5.3</u>	8.3	210	22	18.3	44	6.9	NIL	Fine bec cloudy. Rain mid am. Hvy rain early pm. Fine late evng	
ED	13	1014.6	10.1	6.5	8.3	3.0	5.7	<u>7.9</u>	280	13	16.9	33	4.3	NIL	Fine bec fair mid am then cloudy. Shwrs bec rain pm. Fine late	
HU	14	1014.2	9.7	6.8	8.3	3.3	6.5	<u>7.9</u>	290	13	16.5	30	1.8	3.3	Mainly fair am. Shwr late am. Shwrs pm	
RI	15	1010.6	10.0	8.8	9.4	5.1	6.9	<u>7.9</u>	210	18	<u>21.9</u>	41	<u>21.8</u>	NIL	Cloudy, slt rain early. Rain pm, ocnl mod rain	
AT	16	999.8	11.2	6.1	8.7	5.8	7.6	<u>7.9</u>	300	11	15.7	44	0.4	NIL	Rain & drzl, ocnl hvy. Very hvy rain mid am. Cloudy. Shwrs evng	
JN	17	1006.3	9.0	5.0	7.0	2.6	6.9	8.0	210	13	12.5	26	0.6	6.0	Shwr early bec fair. Slt shwr late am & evng	
ON	18	1018.5	9.7	6.5	8.1	3.4	6.7	8.0	190	16	17.7	37	6.0	0.9	Shwrs early bec fair then cloudy. Slt rain evng	
JE	19	1010.0	11.0	9.6	10.3	7.9	7.4	8.0	180	18	16.4	29	10.2	NIL	Cloudy, rain or drzl bec mod rain. Hvy rain late am bec drzl. Ocnl fog	
ED	20	1010.8	11.3	9.2	10.3	8.7	8.2	8.0	220	13	10.6	33	3.7	NIL	Cloudy, ocnl rain bec mod to hvy rain mid am. Fog early pm. Cloudy	
HU	21	1021.2	9.9	6.9	8.4	2.6	7.8	<u>7.9</u>	020	<u>04</u>	6.3	16	TR	1.2	Fair to cloudy, dew. Ocnl fog mid am. Cloudy. Ocnl fair midday	
RI	22	1026.5	9.4	6.9	8.2	4.7	8.0	8.3	060	05	6.3	18	NIL	1.2	Cloudy ocnl fair late am	
AT	23	1020.1	9.0	5.6	7.3	5.6	7.9	8.4	190	09	11.3	25	3.6	0.1	Cloudy. Mist bec haze. Rain or drzl late pm. Fog	
JN	24	1020.3	11.0	6.3	8.7	1.9	8.0	8.4	220	<u>04</u>	9.7	26	0.8	0.7	Drzl & fog bec fine. Fog patches. Thick fog midday. Rain & drzl evng	
ON	25	1016.3	11.3	7.3	9.3	<u>9.1</u>	8.5	8.5	210	19	16.1	39	5.1	NIL	Cloudy, slt rain. Rain & drzl by late am. Rain evng bec fair	
JE	26	1016.2	9.8	6.3	8.1	3.0	8.1	8.5	240	12	18.2	42	4.6	1.8	Fair bec mainly cloudy, shwrs. Hvy rain evng bec fair	
ED	27	1018.4	9.5	5.9	7.7	2.9	7.4	8.5	310	13	14.1	31	TR	2.0	Mainly fair am bec cloudy pm. Slt drzl early pm. Cloudy	
HU	28	1017.8	10.6	9.0	9.8	7.1	7.9	8.5	290	21	18.3	34	TR	NIL	Cloudy, tempo mist mid am. Slt rain or drzl evng	
RI	29	1029.7	10.0	5.8	7.9	1.5	8.2	8.5	040	<u>04</u>	<u>5.0</u>	14	TR	1.5	Drzl early bec fine mid am. Cloudy, tempo fair pm	
AT	30	1036.6	7.8	5.1	6.5	3.8	8.4	8.6	160	08	8.0	17	NIL	NIL	Cloudy, slt drzl early	
JN	31	<u>1041.6</u>	6.3	2.5	4.4	-0.5	7.3	8.5	160	06	<u>5.0</u>	15	NIL	<u>7.5</u>	Cloudy bec fair or fine. Ocnl dry air	
MEAN		1015.0	9.7	6.4	8.0	3.9	7.5	8.4	SW	12.9	13.7	TOTAL	115.1	63.5		
30 YEAR AVE. 1961-90		1016.2	8.1	4.4	6.2	2.5	6.4	7.8	W	14.7	14.9	////	96.3	52.6		
EXTREMES ARE IN BOLD TYPE	NUMBER OF DAYS WITH	RAIN ≥0.2mm	WET ≥1.0mm	SNOW/ SLEET	HAIL	THNDER	LGHTNG	AIR FROST	GROUND FROST	FOG	FOG 9a.m.	GALE	NO SUN	TOTALS FOR YEAR TO DATE		
		22	18	2	5	0	2	0	3	7	3	1	10			
RECORDS FROM JANUARY 1947													RAINFALL	115.1 mm	SUNSHINE	63.5 hrs
WETTEST DAY DAY/YEAR	32.3mm 5th/1959	DRIEST MONTH YEAR	15.4mm 1992	LOWEST MIN DAY/YEAR	-7.8°C 20th/1963	WARMEST MNTH YEAR	8.5°C 1993	SUNNIEST MNTH YEAR	112.8hrs 1998	RAIN DAYS	22	SUNLESS DAYS	10			
ETTEST MNTH DAY/YEAR	190.4mm 1988	HIGHEST MAX DAY/YEAR	13.3°C 4th/1948	LOWEST GRASS DAY/YEAR	-10.0°C 29th/1947	COLDEST MONTH YEAR	1.5°C 1963	DULLEST MNTH YEAR	26.0hrs 1966	WET DAYS	18					

**METEOROLOGICAL OBSERVATIONS AT GUERNSEY AIRPORT FEBRUARY 1999**

DAY	DATE	BAROMETER	TEMPERATURE deg C					WIND				RAIN	SUN	WEATHER				
			AIR			GRASS	SOIL		DIR'N	SPEED(knots)								
			mb															
		at 9a.m.	MAX	MIN	MEAN	MIN	30cm	100cm	9a.m.	9a.m.	MEAN	MAX	mm	hrs				
MON	1	1041.6	9.5	1.8	5.7	-3.5	6.3	8.5	330	06	6.2	15	NIL	NIL	Fine bec cloudy, tempo haze midday. Haze evening			
TUE	2	1042.0	9.7	4.7	7.2	5.7	6.8	8.2	020	05	4.9	14	NIL	1.5	Cloudy am. Fair pm, cloudy later			
WED	3	1041.5	9.7	4.8	7.3	-0.2	6.9	8.1	270	09	11.0	22	TR	0.1	Cloudy, ocnl fair early. Slt rain evng			
THU	4	1036.3	10.2	8.9	9.6	7.5	7.4	8.1	270	16	18.9	33	TR	NIL	Cloudy, slt rain am. Drzl & mist late evng			
FRI	5	1028.5	10.5	7.6	9.1	5.0	7.7	8.1	310	18	18.9	36	TR	4.9	Cloudy, ocnl fair late am			
SAT	6	1022.9	9.8	7.4	8.6	5.3	7.4	8.2	320	14	17.6	31	1.2	1.5	Cloudy, slt shwrs. Tempo fair late am			
SUN	7	1012.4	9.2	3.7	6.5	2.6	7.4	8.1	330	17	16.7	34	4.3	4.4	Cloudy, hvy rain early bec fair. Shwrs, ice pellets			
MON	8	1008.2	9.7	2.7	6.2	1.2	6.4	8.1	220	08	12.1	43	12.5	NIL	Fair bec cloudy. Rain mid am, tempo sleet. Tempo hvy rain pm			
TUE	9	1006.9	4.8	0.8	2.8	-0.8	6.2	8.0	010	16	14.6	29	TR	6.0	Cloudy, slt shwr early bec fair. Slt snow shwr evng. Lghtng			
WED	10	1014.6	5.3	1.0	3.2	-0.9	5.2	7.9	340	12	11.6	26	NIL	7.6	Cloudy bec fair. Fine pm			
THU	11	1023.0	7.0	1.5	4.3	-3.4	4.9	7.7	360	03	5.7	16	NIL	8.2	Fair or fine			
FRI	12	1027.3	8.1	2.9	5.5	-3.4	4.9	7.4	180	02	3.9	10	1.1	5.8	Fine, hoar frost bec fair. Ocnl cloudy			
SAT	13	1033.1	5.7	2.4	4.1	-2.1	5.2	7.3	130	06	5.6	16	TR	NIL	Fine bec cloudy. Slt rain mid am, tempo mod rain. Cloudy, fine evng			
SUN	14	1034.5	8.9	0.3	4.6	-5.7	4.8	7.2	220	06	9.2	26	2.8	2.8	Fine, hoar frost bec cloudy late am. Slt rain pm. Rain & drzl late, fog			
MON	15	1026.0	9.1	6.3	7.7	5.5	5.8	7.0	020	07	9.3	23	TR	6.5	Rain, drzl & fog early. Mist mid am bec fair. Cloudy evng, slt rain			
TUE	16	1020.0	9.0	6.5	7.8	4.6	6.4	7.0	320	16	15.3	27	0.1	1.7	Cloudy, slt rain am. Ocnl fair			
WED	17	1022.4	10.2	5.9	8.1	3.0	6.3	7.1	300	16	17.0	31	0.1	1.1	Fair bec mainly cloudy. Slt shwrs. Rain & drzl evng, mist. Tempo fair			
THU	18	1023.4	11.1	8.5	9.8	5.9	7.0	7.2	300	11	15.7	28	3.3	1.3	Mainly cloudy. Slt rain or drzl pm			
FRI	19	1019.8	10.5	9.2	9.9	7.9	7.5	7.4	250	18	20.0	36	12.9	NIL	Rain or drzl, ocnl mod. Ocnl fog			
SAT	20	1019.9	10.1	6.9	8.5	7.5	8.1	7.5	340	08	11.9	26	0.2	3.8	Rain, drzl & fog bec fair late am. Cloudy by evng			
SUN	21	1014.0	9.8	8.0	8.9	5.8	8.0	7.8	260	24	21.9	39	0.9	NIL	Cloudy, rain & drzl mid am. Ocnl slt drzl pm. Shwr late pm			
MON	22	1012.7	8.8	5.1	7.0	2.7	7.5	7.9	300	27	24.0	46	NIL	8.3	Fair, slt shwrs early. Dry air late am. Ocnl fine			
TUE	23	1021.1	7.7	4.9	6.3	1.2	6.7	7.9	320	12	11.6	27	11.8	0.7	Fair or fine bec cloudy. Shwrs early pm bec rain or drzl. Fog late			
WED	24	1001.8	12.7	6.4	9.6	4.5	7.1	7.8	270	08	12.3	31	NIL	3.2	Rain & drzl, tempo hvy rain early. Fog bec mist. Fair early pm. Cloudy			
THU	25	1022.4	7.6	5.5	6.6	4.5	7.3	7.8	-	00	5.7	19	NIL	NIL	Cloudy			
FRI	26	1017.6	9.0	7.3	8.2	6.3	7.4	7.8	210	13	13.0	24	12.3	0.1	Cloudy. Rain late evng. Mod rain & drzl late pm			
SAT	27	1011.2	10.2	6.7	8.5	5.7	7.5	7.9	290	10	12.3	26	TR	5.5	Rain & drzl, ocnl hvy early. Fair late am			
SUN	28	1022.6	11.3	7.1	9.2	3.5	7.4	7.9	240	10	16.0	34	6.5	6.4	Mainly fair bec cloudy by evng. Rain & drzl later. Tempo hvy rain			
MEAN		1022.4	9.1	5.2	7.1	2.7	6.7	7.7	NW	11.4	13.0	TOTAL	70.0	81.4				
30 YEAR AVE. 1961-90		1015.6	7.8	4.0	5.9	1.1	6.2	7.2	E	14.0	14.0	////	79.3	79.1				
EXTREMES ARE IN BOLD TYPE	NUMBER OF DAYS WITH	RAIN ≥0.2mm	WET ≥1.0mm	SNOW/ SLEET	HAIL	THUNDER	LGHTN	AIR FROST	GROUND FROST	FOG	FOG 9a.m.	GALE	NO SUN	TOTALS FOR YEAR TO DATE				
		12	10	2	1	0	1	0	8	6	1	0	7					
RECORDS FROM JANUARY 1947															RAINFALL	185.1 mm	SUNSHINE	144.9 hrs
WETTEST DAY	59.0mm	DRIEST MONTH	4.8mm	LOWEST MIN	-7.2°C	WARMEST MNTH	9.0°C	SUNNIEST MNTH	140.9hrs	RAIN DAYS 34 WET DAYS 28		SUNLESS DAYS 17						
DAY/YEAR	18th/1978	YEAR	1965	DAY/YEAR	21st/48,7th/91	YEAR	1990	YEAR	1959									
WETTEST MNTH	182.8mm	HIGHEST MAX	15.0°C	LOWEST GRASS	-11.1°C	COLDEST MNTH	1.5°C	DULLEST MNTH	36.1hrs									
DAY/YEAR	1978	DAY/YEAR	29th/1948	DAY/YEAR	12th/1978	YEAR	1986	YEAR	1976									



**METEOROLOGICAL OBSERVATIONS AT GUERNSEY AIRPORT MARCH 1999**

DAY	DATE	BAROMETER	TEMPERATURE deg C						WIND				RAIN	SUN	WEATHER		
			AIR			GRASS	SOIL		DIR'N	SPEED(knots)							
			at 9a.m.	MAX	MIN	MEAN	MIN	30cm	100cm	9a.m.	9a.m.	MEAN	MAX	mm		hrs	
MON	1	1016.9	10.7	8.6	9.7	7.8	8.0	7.9	240	20	<u>20.3</u>	38	5.4	NIL	Rain, drzl & mist. Fog patches mid am. Drzl & mist. Fog evng		
TUE	2	1013.7	12.3	8.8	10.6	9.2	8.5	8.0	230	20	19.1	37	7.2	2.6	Fog & drzl bec cloudy, mist. Tempo slt drzl & fog am. Hvy rain evng		
WED	3	993.4	9.7	4.9	7.3	3.8	8.4	8.1	230	<u>22</u>	19.3	<u>42</u>	<u>12.8</u>	6.7	Fair ocnl cloudy. Shwrs. Ice pellets am. Hvy rain & hail shwr evng		
THU	4	<u>985.9</u>	7.7	4.4	6.1	0.0	7.7	8.2	290	08	14.5	28	4.6	1.2	Mainly cloudy, shwrs. Hvy shwr, rain & ice pellets early evng		
FRI	5	998.1	7.3	2.9	<u>5.1</u>	2.6	7.0	8.3	330	15	14.7	27	3.0	5.1	Cloudy, shwrs early, ocnl fair. Shwrs of hail & snow pellets early evng		
SAT	6	1003.8	7.9	3.4	5.7	-0.2	6.3	8.1	320	16	16.5	34	1.0	6.0	Fair ocnl cloudy. Shwrs, ocnl ice pellets		
SUN	7	1005.2	8.7	4.1	6.4	1.9	<u>6.1</u>	7.9	310	07	10.5	23	7.5	8.1	Fair ocnl cloudy am, shwrs. Ice pellets. Bec fine pm. Hoar frost late		
MON	8	995.7	<u>7.1</u>	4.1	5.6	-2.1	6.3	7.9	100	15	12.3	28	1.5	0.1	Fine, hoar frost bec cloudy, rain. Hvy rain mid am. Cloudy pm		
TUE	9	1004.0	9.4	4.2	6.8	1.3	6.3	7.7	050	06	4.8	12	TR	4.1	Cloudy, rain early. Ocnl fair. Dew & hoar frost late pm		
WED	10	1012.1	8.5	<u>2.5</u>	5.5	<u>-3.3</u>	6.3	7.6	050	10	10.9	24	0.4	7.7	Fair or fine, hoar frost. Shallow fog mid am. Cloudy evng, rain later		
THU	11	1009.9	12.3	6.2	9.3	4.6	6.6	7.6	110	11	9.3	22	0.3	2.7	Cloudy, rain early. Slt rain early pm bec fair, haze		
FRI	12	1007.8	12.7	6.4	9.6	1.0	7.1	<u>7.5</u>	040	<u>03</u>	7.3	22	0.9	0.2	Fair, haze & dew bec shallow fog. Fog patch mid am. Cloudy, slt rain		
SAT	13	1015.5	12.2	6.0	9.1	2.1	7.8	7.6	260	06	5.9	16	TR	3.3	Slt rain early bec fair or fine, dew. Mainly cloudy. Fog patches evng		
SUN	14	1025.9	11.5	5.3	8.4	-1.3	7.9	7.8	010	<u>03</u>	<u>4.0</u>	11	NIL	10.6	Fair, dew. Shallow fog. Fog patch mid am. Fine. Dew late evng		
MON	15	1029.9	12.1	4.6	8.4	-2.0	7.7	7.9	080	04	4.3	10	NIL	9.9	Fine, dew & slt hoar frost. Shallow fog mid am. Fine, dry air midday		
TUE	16	<u>1031.5</u>	11.5	4.5	8.0	-1.8	7.7	8.0	030	<u>03</u>	4.4	12	NIL	<u>10.8</u>	Fine, slt hoar frost. Shallow fog. Fog patch early. Fine		
WED	17	1030.0	13.6	5.6	9.6	1.2	7.9	8.1	030	04	5.2	11	NIL	<u>10.8</u>	Fine, dew early. Ocnl fair pm. Fog patches evng. Mist & dew		
THU	18	1026.0	11.4	6.8	9.1	1.7	8.3	8.0	330	08	10.7	24	NIL	8.6	Fine, dew. Tempo thick fog mid am bec fair. Tempo cloudy late am.		
FRI	19	1030.1	9.4	5.9	7.7	2.3	8.0	8.2	350	08	8.3	19	NIL	10.3	Fair, slt dew early. Cloudy evening		
SAT	20	1030.1	11.3	5.5	8.4	-1.0	8.0	8.3	070	<u>03</u>	5.7	16	0.3	7.3	Cloudy. Fine mid am, shallow fog. Mainly fair. Cloudy late pm		
SUN	21	1014.4	10.6	6.9	8.8	4.7	8.2	8.3	250	21	19.1	37	3.8	3.9	Cloudy. Rain mid am. Tempo mod rain. Hvy rain early pm bec fine.		
MON	22	1018.5	10.0	7.3	8.7	5.1	8.0	8.4	330	16	15.1	26	0.3	8.9	Fine bec fair. Cloudy by evening. Slt rain		
TUE	23	1017.8	10.5	7.7	9.1	6.0	8.3	8.4	280	13	12.3	29	TR	0.1	Cloudy, drizzle early. Ocnl mist		
WED	24	1012.5	10.3	6.8	8.6	7.0	8.5	8.5	170	07	7.3	16	TR	1.1	Cloudy. Fair by evening. Haze & dew later		
THU	25	995.1	10.0	6.4	8.2	3.8	8.5	8.6	190	11	10.0	22	5.0	0.9	Fair, haze & dew bec cloudy. Slight rain. Tempo fair early evng		
FRI	26	1001.9	10.0	4.9	7.5	3.8	8.3	8.6	310	11	10.0	24	NIL	10.6	Mod rain early, tempo heavy rain bec fair. Slt shwr ice pellets mid am		
SAT	27	1002.9	11.5	5.9	8.7	0.9	8.1	8.6	100	12	9.7	21	NIL	9.1	Fine, slt dew early bec fair. Fine by evng, dew		
SUN	28	1016.3	12.7	5.0	8.9	-1.8	8.0	8.6	160	05	6.4	18	0.1	8.3	Fine, dew & slt hoar frost. Fair late am. Cloudy by evng. Rain later		
MON	29	1014.5	12.4	9.2	10.8	8.2	8.9	8.6	170	10	10.1	24	10.8	2.0	Cloudy, ocnl slt drzl. Drzl & fog by evng. Mod rain & drzl, thick fog		
TUE	30	1015.6	12.0	<u>9.5</u>	10.8	<u>9.3</u>	9.3	8.6	170	04	8.2	22	0.2	0.2	Rain, drzl & fog. Ocnl thick fog am. Cloudy pm, ocnl slt rain. Fair		
WED	31	1016.2	<u>15.9</u>	9.3	<u>12.6</u>	7.5	<u>9.5</u>	<u>8.8</u>	140	07	9.7	21	NIL	9.6	Cloudy, mist bec fair. Dry air evng		
MEAN		1012.6	10.7	5.9	8.3	2.7	7.8	8.2	NW	10.0	10.5	TOTAL	65.1	170.8			
30 YEAR AVE. 1961-90		1016.1	9.2	4.7	7.0	2.5	7.1	7.5	W	13.3	13.0	////	70.2	131.3			
EXTREMES ARE IN BOLD TYPE	NUMBER OF DAYS WITH	RAIN ≥0.2mm	WET ≥1.0mm	SNOW/ SLEET	HAIL	THUNDER	LGHTNG	AIR FROST	GROUND FROST	FOG	FOG 9a.m.	GALE	NO SUN	TOTALS FOR YEAR TO DATE			
		17	11	0	6	0	0	0	8	10	2	0	1				
RECORDS FROM JANUARY 1947														RAINFALL	250.2 mm	SUNSHINE	315.7 hrs
WETTEST DAY	30.0mm	DRIEST MONTH	2.7mm	LOWEST MIN	-2.2°C	WARMEST MNTH	10.3°C	SUNNIEST MNTH	206.1hrs	RAIN DAYS	51	SUNLESS DAYS	18				
DAY/YEAR	28th/1960	YEAR	1961	DAY/YEAR	10th/11th/1958	YEAR	1957	YEAR	1973	WET DAYS	39						
WETTEST MNTH	160.2mm	HIGHEST MAX	19.4°C	LOWEST GRASS	-9.4°C	COLDEST MNTH	4.4°C	DULLEST MNTH	67.4hrs								
DAY/YEAR	1947	DAY/YEAR	29th/1965	DAY/YEAR	3rd/1965	YEAR	1962	YEAR	1964								



**METEOROLOGICAL OBSERVATIONS AT GUERNSEY AIRPORT APRIL 1999**

DAY	DATE	BAROMETER	TEMPERATURE deg C						WIND				RAIN	SUN	WEATHER			
		mb	AIR			GRASS	SOIL		DIR'N	SPEED(knots)			mm	hrs				
		at 9a.m.	MAX	MIN	MEAN	MIN	30cm	100cm	9a.m.	9a.m.	MEAN	MAX						
THU	1	1006.7	15.5	9.6	<u>12.6</u>	8.3	9.9	<u>9.0</u>	110	10	9.0	24	1.8	5.5	Fine bec fair. Cloudy early pm. Ocnl slt rain. Fair later			
G.FRI	2	1013.9	13.1	8.8	11.0	5.8	10.1	9.1	180	10	7.1	18	5.2	3.0	Fair, dew bec cloudy. Ocnl rain am. Fair midday. Slt shwrs pm. Fog			
SAT	3	1017.4	13.0	9.5	11.3	8.3	10.3	9.3	250	12	12.4	24	0.1	0.7	Rain, drzl & fog. Hvy rain early. Fog patches. Tempo drzl pm			
Ξ.SUN	4	1027.2	14.3	10.2	12.3	8.2	10.4	9.4	200	08	8.7	18	TR	0.8	Cloudy, ocnl thick fog early. Slt rain late am. Tempo fair evng			
Ξ.MON	5	1027.2	14.0	<u>10.3</u>	12.2	<u>9.9</u>	10.8	9.6	200	11	8.6	18	1.1	1.9	Cloudy. Ocnl fair pm. Mist evng			
TUE	6	1023.7	13.2	9.8	11.5	8.3	10.8	9.8	250	17	14.3	27	11.2	3.6	Cloudy am. Ovnl fog & drzl. Fair early pm bec cloudy. Hvy rain late			
WED	7	1025.2	12.3	7.7	10.0	5.8	10.6	9.8	300	15	14.5	27	TR	9.6	Hvy rain early bec fair or fine. Cloudy evng, fine later			
THU	8	<u>1028.1</u>	13.1	6.0	9.6	0.9	10.5	9.9	330	04	<u>5.7</u>	13	0.6	3.9	Fine, dew. Shallow fog & mist. Fair bec cloudy late am. Ocnl fog pm			
FRI	9	1027.3	11.3	9.1	10.2	9.5	10.8	10.0	280	04	7.5	17	0.2	<u>0.1</u>	Drzl, fog early. Fog patches early pm, Cloudy			
SAT	10	1021.8	12.5	8.2	10.4	8.4	10.7	10.1	240	11	14.3	27	TR	5.0	Fog & drzl bec mist. Ocnl fog am. bec fair or fine pm			
SUN	11	1025.2	11.5	7.6	9.6	5.3	10.3	10.1	320	12	14.5	36	6.6	8.9	Fair or fine. Slt shwr mid am. Cloud by evng. rain later			
MON	12	1002.4	11.8	7.1	9.5	6.5	10.4	10.2	260	<u>22</u>	23.0	41	2.4	9.1	Rain early bec fair. Shwrs. Hvy shwr early pm, ice pellets			
TUE	13	1011.7	10.2	5.9	8.1	4.3	9.8	10.1	290	17	18.4	38	2.0	9.5	Fair. Cloudy late am, shwrs. Shwrs evng. rain later			
WED	14	<u>996.1</u>	<u>7.6</u>	2.2	<u>4.9</u>	3.1	9.2	10.0	-	<u>00</u>	9.3	25	5.0	5.7	Rain or drzl. Shwrs, sleet am. Ocnl fair pm, Shwrs evng, ice pellets			
THU	15	1000.5	8.3	<u>1.7</u>	5.0	-1.1	8.5	9.9	340	19	12.7	32	2.3	10.6	Shwrs, ocnl hvy. Hail bec fair. Shwrs early pm & late			
FRI	16	1003.3	10.2	3.2	6.7	-1.3	<u>8.3</u>	9.8	180	06	7.7	18	7.7	8.5	Fair to cloudy, shwrs. Hvy shwr early, ice pellets.			
SAT	17	1009.4	9.6	5.1	7.4	4.5	8.9	9.6	360	05	8.8	23	2.6	7.0	Cloudy. TS mid am. Hvy shwr. Fair bec fine pm			
SUN	18	1016.0	10.2	4.4	7.3	1.2	8.7	9.6	350	02	9.1	23	TR	7.9	Fair bec cloudy. Rain mid am. Fair late am. Ocnl dry air pm			
MON	19	1019.0	8.8	2.9	5.9	<u>-3.7</u>	8.6	9.6	120	04	9.0	28	9.1	0.7	Cloudy bec fine. Hoar frost. Cloudy. Rain early pm. Mist later			
TUE	20	999.4	11.5	8.2	9.9	6.8	8.9	9.5	150	11	13.7	27	<u>12.7</u>	<u>0.1</u>	Mist, slt drzl early. Rain mid am. Fog patches. Hvy rain evng bec fair			
WED	21	996.3	13.1	9.6	11.4	7.7	9.2	9.5	190	15	17.3	32	4.3	5.2	Mainly cloudy bec fair mid am. Cloudy pm, shwrs. Ocnl fair evng			
THU	22	1006.7	12.8	8.1	10.5	7.5	9.6	9.5	230	14	12.9	26	3.6	10.0	Mainly cloudy. Hvy shwr early. Fair mid am. Ocnl fine pm. Rain late			
FRI	23	1003.0	10.3	7.9	9.1	6.9	10.1	9.6	130	08	14.5	32	12.2	0.8	Cloudy, rain early. Ocnl slt rain. Hvy rain late am & early pm. Fair evng			
SAT	24	1016.7	13.4	8.0	10.7	5.7	9.6	9.8	280	12	9.9	22	TR	11.7	Fair, slt dew. Tempo cloudy mid am bec fair or fine. Cloudy later			
SUN	25	1011.3	10.3	9.2	9.8	7.5	10.4	9.8	140	12	11.0	25	5.5	<u>0.1</u>	Cloudy. Slt rain early. Rain late am, mod rain pm. Drzl & fog patches			
MON	26	1011.3	15.1	9.2	12.2	9.1	10.2	9.9	110	10	9.2	20	0.4	11.2	Cloudy, mist bec fair. Cloudy late evng, slt rain			
TUE	27	1019.0	14.5	10.2	12.4	9.3	<u>10.9</u>	10.0	040	21	19.0	35	NIL	5.7	Cloudy, rain early. Mist bec haze. Bec fair then fine pm			
WED	28	1022.8	14.5	9.5	12.0	7.5	10.6	10.2	050	20	21.6	38	NIL	<u>12.3</u>	Fine			
THU	29	1014.9	11.7	9.0	10.4	7.5	10.5	<u>10.3</u>	050	<u>22</u>	<u>24.0</u>	<u>45</u>	NIL	0.7	Fine bec cloudy, haze. Ocnl fair mid pm			
FRI	30	1015.9	<u>15.6</u>	9.2	12.4	7.0	10.3	<u>10.3</u>	130	04	6.9	22	NIL	6.4	Fine bec fair, haze. Ocnl mist am. Ocnl cloudy			
MEAN		1014.0	12.1	7.6	9.8	5.8	9.9	9.8	W	11.3	12.5	TOTAL	96.6	166.2				
30 YEAR AVE. 1961-90		1015.6	11.0	6.0	8.5	3.5	9.2	9.0	NE	12.9	12.2	////	51.4	182.9				
EXTREMES ARE IN BOLD TYPE	NUMBER OF DAYS WITH	RAIN ≥0.2mm	WET ≥1.0mm	SNOW/ SLEET	HAIL	THUNDER	LGHTN	AIR FROST	GROUND FROST	FOG	FOG 9a.m.	GALE	NO SUN	TOTALS FOR YEAR TO DATE				
		20	17	1	4	1	1	0	3	9	0	0	0					
RECORDS FROM JANUARY 1947														RAINFALL	346.8 mm	SUNSHINE	481.9 hrs	
WETTEST DAY		23.8mm	DRIEST MONTH		2.9mm	LOWEST MIN		-1.4°C	WARMEST MNTH		10.9°C	SUNNIEST MNTH		280.4hrs	RAIN DAYS	71	SUNLESS DAYS	18
DAY/YEAR		30th/1953	YEAR		1980	DAY/YEAR		11th/1986	YEAR		1961	YEAR		1984	WET DAYS	56		
WETTEST MNTH		130.4mm	HIGHEST MAX		23.0°C	LOWEST GRASS		-7.0°C	COLDEST MNTH		6.4°C	DULLEST MNTH		122.2hrs				
DAY/YEAR		1966	DAY/YEAR		22nd/1984	DAY/YEAR		5th/1990	YEAR		1986	YEAR		1981				



**METEOROLOGICAL OBSERVATIONS AT GUERNSEY AIRPORT MAY 1999**

DAY	DATE	BAROMETER	TEMPERATURE deg C						WIND				RAIN	SUN	WEATHER			
		mb	AIR			GRASS	SOIL		DIR'N	SPEED(knots)			mm	hrs				
		at 9a.m.	MAX	MIN	MEAN	MIN	30cm	100cm	9a.m.	9a.m.	MEAN	MAX						
SAT	1	1018.1	17.9	9.3	13.6	5.4	<u>11.3</u>	<u>10.3</u>	060	04	5.9	13	NIL	12.7	Fine, adjacent fog am			
SUN	2	1020.2	17.7	<u>6.8</u>	12.3	4.9	11.8	10.5	080	06	7.0	16	NIL	13.6	Fine, dew adjacent fog. Fog patches early. Ocnl dry air pm			
3.HO	3	1018.3	18.4	9.7	14.1	6.6	12.1	10.7	060	09	11.6	28	NIL	11.0	Fine, haze & dew. Tempo mist. Fair pm			
TUE	4	1013.0	14.6	10.8	12.7	9.0	12.1	11.0	040	15	14.8	31	NIL	3.9	Fair, haze bec cloudy. Gradu fair pm			
WED	5	<u>1008.2</u>	16.5	9.8	13.2	7.7	11.8	11.1	170	05	6.5	20	0.3	2.1	Fair, haze & dew bec cloudy. Fog patches bec mist pm. Rain later			
THU	6	1014.7	16.7	11.0	13.9	10.3	12.2	11.1	200	09	9.4	22	2.0	9.4	Cloudy, mist early. Fine late am. Cloudy evng			
FRI	7	1008.5	16.2	10.3	13.3	10.3	12.9	11.2	220	04	7.0	19	0.6	2.3	Cloudy. Hvy shwr & TS early. Tempo fine later. Fog patch			
SAT	8	1011.7	15.8	10.0	12.9	6.5	12.5	11.5	190	10	10.7	20	NIL	8.6	Fine, dew bec fair ocnl cloudy			
LIB.D	9	1014.0	17.2	10.6	13.9	8.3	12.8	11.6	140	11	10.5	23	0.4	4.4	Fair, dew bec mainly cloudy. Slt rain evng. Fair later			
MON	10	1011.0	16.6	11.0	13.8	8.4	12.8	11.7	180	15	11.2	24	1.8	9.3	Fair, dew. Ocnl fine pm. Cloudy evng, shwrs. Fair later			
TUE	11	1011.5	15.7	11.1	13.4	9.7	13.0	11.8	190	12	11.6	25	TR	7.4	Fair bec cloudy. Tempo slt rain am, bec fine pm. Fair, dew later			
WED	12	1013.0	14.8	10.7	12.8	9.0	12.9	11.9	210	12	12.8	25	TR	9.8	Fair ocnl cloudy am			
THU	13	1013.2	14.1	10.6	12.4	9.4	12.9	12.0	220	11	11.1	20	1.9	4.2	Fair bec cloudy. Hvy shwr late am. Fine by evng bec fair, dew			
FRI	14	1013.1	14.6	10.2	12.4	8.5	12.8	12.1	240	12	11.9	22	TR	12.3	Mainly cloudy bec fair, ocnl fine evng			
SAT	15	1017.2	14.7	7.9	<u>11.3</u>	2.5	12.9	12.2	360	04	8.3	20	NIL	10.6	Fair, dew. Shallow fog, tempo thick fog mid am. Fair, haze bec fine			
SUN	16	1021.7	14.2	9.7	12.0	7.5	12.7	12.2	050	14	13.8	27	TR	12.9	Fine, dew bec cloudy. Fine again mid am, tempo dry air pm			
MON	17	1016.3	14.0	9.2	11.6	7.2	12.2	12.2	050	<u>21</u>	<u>21.8</u>	<u>43</u>	<u>11.2</u>	7.8	Fair, ocnl cloudy am. Slt shwr am. Cloudy by evng. Rain later			
TUE	18	1009.0	17.2	9.8	13.5	9.1	12.1	12.2	130	09	13.3	39	NIL	9.3	Hvy rain early bec rain & drzl. Drzl mid am. Fair late am. Mist later			
WED	19	1011.2	15.3	10.5	12.9	7.7	12.7	12.1	030	09	9.7	18	NIL	5.0	Fair, mist & dew bec thick fog. Cloudy, fog patches bec fair pm			
THU	20	1014.5	15.8	10.5	13.2	8.9	12.7	12.2	290	14	12.4	22	NIL	8.8	Cloudy, mist. Tempo fine mid am. Fair or fine pm, haze			
FRI	21	1020.1	13.5	10.3	11.9	8.6	12.8	12.2	260	16	17.3	30	TR	0.5	Tempo fair early, dew bec cloudy. Slt drzl & mist evng. Fog patch			
SAT	22	1022.7	14.8	9.8	12.3	7.5	12.6	12.2	280	10	14.5	24	0.3	7.5	Fair, dew bec cloudy. Slt shwr midday, bec mainly fair pm			
SUN	23	<u>1023.8</u>	<u>12.9</u>	10.2	11.6	8.1	12.7	12.2	230	09	10.2	19	0.1	<u>NIL</u>	Fine bec cloudy. Ocnl thick fog & drzl mid to late am. Cloudy, mist pm			
MON	24	1022.8	15.4	11.0	13.2	9.9	12.6	12.2	220	06	9.5	20	NIL	1.4	Cloudy. Tempo fair pm			
TUE	25	1023.8	15.4	8.7	12.1	5.5	12.7	12.3	280	06	6.5	17	NIL	9.0	Cloudy bec fair, fine evng			
WED	26	1020.6	16.7	8.7	12.7	<u>2.1</u>	12.7	12.4	170	03	5.3	16	NIL	<u>14.8</u>	Fair, dew bec fine. Tempo dry air pm			
THU	27	1011.0	21.5	11.8	16.7	9.5	13.4	12.3	080	15	12.3	29	1.8	5.9	Fine bec cloudy late am. Shwrs. Ocnl fair pm. Hvy shwr evng			
FRI	28	1020.1	20.2	12.7	16.5	11.6	13.6	12.5	200	11	7.8	17	TR	12.2	Cloudy, slt rain early. Fair or fine from mid am			
SAT	29	1012.7	<u>23.0</u>	<u>13.0</u>	<u>18.0</u>	<u>11.7</u>	14.2	12.6	080	13	11.1	27	TR	12.2	Fine bec cloudy. Slt rain & TS mid am. Mainly fair			
SUN	30	1015.7	15.3	10.7	13.0	9.1	<u>14.7</u>	12.8	--	<u>00</u>	<u>4.0</u>	11	0.1	1.0	Fair bec fog. Thick fog bec fog patches. Slt drzl evng			
3.HO	31	1022.9	16.8	12.1	14.5	11.1	14.6	<u>13.0</u>	080	07	9.1	24	NIL	7.8	Ocnl fog early. Drzl. cloudy bec fair pm			
MEAN		1016.0	16.2	10.3	13.3	8.1	12.8	11.9	S	9.7	10.6	TOTAL	20.5	237.7				
30 YEAR AVE. 1961-90		1015.7	14.0	8.4	11.2	6.0	12.4	11.4	NE	12.2	11.3	////	50.8	233.9				
EXTREMES ARE IN BOLD TYPE	NUMBER OF DAYS WITH	RAIN ≥0.2mm	WET ≥1.0mm	SNOW/ SLEET	HAIL	THUNDER	LGHTN	AIR FROST	GROUND FROST	FOG	FOG 9a.m.	GALE	NO SUN	TOTALS FOR YEAR TO DATE				
		9	5	0	0	2	2	0	0	9	2	0	1					
RECORDS FROM JANUARY 1947															RAINFALL	367.3 mm	SUNSHINE	719.6 hrs
WETTEST DAY		40.4mm	DRIEST MONTH		4.1mm	LOWEST MIN		0.1°C	WARMEST MNTH		13.9°C	SUNNIEST MNTH		336.4hrs	RAIN DAYS	80	SUNLESS DAYS	19
DAY/YEAR		24th/1950	YEAR		1989	DAY/YEAR		2nd/1979	YEAR		1989	YEAR		1989	WET DAYS	61		
VETTEST MNTH		128.7mm	HIGHEST MAX		25.7°C	LOWEST GRASS		-5.6°C	COLDEST MNTH		9.9°C	DULLEST MNTH		136.9hrs				
DAY/YEAR		1994	DAY/YEAR		5th/1995	DAY/YEAR		5th/1979	YEAR		1984	YEAR		1981				



## METEOROLOGICAL OBSERVATIONS AT GUERNSEY AIRPORT JUNE 1999

DAY	DATE	BAROMETER	TEMPERATURE deg C						WIND				RAIN	SUN	WEATHER		
		mb	AIR			GRASS	SOIL		DIR'N	SPEED(knots)							
		at 9a.m.	MAX	MIN	MEAN	MIN	30cm	100cm	9a.m.	9a.m.	MEAN	MAX					
TUE	1	1018.1	18.1	11.6	14.9	9.6	14.4	<u>13.2</u>	060	14	13.0	29	9.7	8.3	Fine, haze & dew bec fair. Gradu cloudy pm. TS & hvy rain evng		
WED	2	1004.1	17.8	12.7	15.3	<u>13.9</u>	14.7	13.3	160	11	13.4	<u>36</u>	2.7	4.0	Cloudy, ocnl rain & fog. tempo fair. Rain late am. Bec fair pm		
THU	3	1006.9	15.4	11.7	13.6	9.7	14.1	13.4	180	12	13.2	33	2.7	6.0	Fine, dew bec cloudy, rain. Fair to cloudy, shwrs. rain evng fog patch		
FRI	4	1010.1	14.8	11.0	12.9	10.6	14.1	13.4	250	<u>17</u>	15.0	27	8.1	3.0	Cloudy. Rain, drzl mid am, fog patch. Fair late am. Cloudy, hvy shwr late		
SAT	5	<u>1002.0</u>	13.9	<u>8.7</u>	<u>11.3</u>	7.4	13.6	13.4	200	16	12.8	34	6.1	6.8	Rain early, lghtng bec fair. Shwrs. Fair to cloudy. Hvy shwrs		
SUN	6	1006.9	15.1	9.6	12.4	7.9	<u>13.2</u>	13.3	260	13	12.2	29	0.2	11.4	Cloudy bec fine by dawn. Cloudy evng, shwrs		
MON	7	1011.5	15.2	10.3	12.8	8.5	13.7	13.3	280	10	11.5	22	TR	11.8	Cloudy bec fair		
TUE	8	1023.0	14.5	8.8	11.7	4.8	13.5	13.3	250	13	9.5	19	4.8	3.9	Fair. Slt shwrs am. Cloudy late am. Rain late pm		
WED	9	1025.4	<u>13.8</u>	10.5	12.2	10.0	13.4	13.3	160	05	5.7	15	1.4	<u>0.1</u>	Cloudy, rain & drzl to mid am. Hvy drzl & rain late am. Fog patch		
THU	10	1028.0	16.1	11.7	13.9	7.1	13.6	13.3	020	08	8.1	17	NIL	12.2	Cloudy bec fair, mist & dew. Fine mid am. Cloudy evng		
FRI	11	1027.3	15.9	10.5	13.2	7.5	13.8	13.4	360	03	6.0	13	NIL	10.9	Fine, dew bec cloudy. Fine mid am. Ocnl cloudy pm. Fine, dew later		
SAT	12	1023.0	15.0	9.2	12.1	3.5	13.9	13.4	360	08	7.3	17	NIL	6.2	Fair or fine, dew. Shallow fog. Fair ocnl cloudy. Fine, dew late pm		
SUN	13	1024.4	15.8	10.3	13.1	7.2	13.8	13.4	340	08	8.7	15	NIL	11.3	Fine, dew bec fair. Cloudy evng, fair later		
MON	14	1027.3	17.7	10.6	14.2	7.4	14.1	13.5	320	08	6.6	15	TR	12.0	Fair or fine, dew. Mist, tempo haze mid am.		
TUE	15	<u>1028.3</u>	19.3	11.0	15.2	4.9	14.6	13.6	020	06	6.2	12	NIL	14.7	Fine, dew early		
WED	16	1024.3	<u>21.7</u>	11.6	16.7	3.5	14.9	13.7	070	04	6.1	15	NIL	13.8	Fine, dew bec fair. Tempo dry air. Fine, dew later		
THU	17	1025.6	17.4	12.4	14.9	10.5	15.3	13.8	320	07	8.8	17	NIL	11.4	Fine, dew bec fair. Tempo cloudy midday		
FRI	18	1026.9	18.8	12.0	15.4	10.2	15.4	14.0	330	03	5.1	13	TR	<u>15.0</u>	Cloudy bec fair mid am, then fine. Fog late pm		
SAT	19	1025.7	18.1	11.3	14.7	5.6	15.8	14.2	330	05	8.5	23	0.6	7.5	Fine, mist & dew. Ocni fog to mid am. Cloudy midday		
SUN	20	1017.1	16.5	12.2	14.4	12.9	15.7	14.3	250	<u>17</u>	<u>15.7</u>	27	TR	6.2	Cloudy, ocnl rain, drzl & fog am bec fair or fine pm. Tempo cloudy evng		
MON	21	1022.5	15.4	11.2	13.3	8.5	15.3	14.4	320	14	12.8	24	NIL	13.3	Fine bec fair, tempo cloudy mid am. fine. Tempo dry air pm		
TUE	22	1025.5	16.1	8.9	12.5	<u>2.7</u>	15.0	14.5	--	<u>00</u>	5.4	15	NIL	14.3	Fine, slt dew early. Dry air midday. Fair later		
WED	23	1023.2	17.4	10.8	14.1	4.5	15.2	14.5	190	04	<u>4.3</u>	16	NIL	11.4	Fair, ocnl cloudy early. Fine pm		
THU	24	1024.9	20.8	11.0	15.9	5.1	15.5	14.5	060	08	8.7	20	NIL	14.7	Fine, slt dew early. Dry air evng		
FRI	25	1020.1	20.2	<u>15.7</u>	<u>18.0</u>	12.3	16.0	14.6	070	14	13.8	25	NIL	13.4	Fine. Tempo haze mid am. Fair pm		
SAT	26	1007.3	18.8	14.6	16.7	13.6	<u>16.3</u>	14.7	150	06	9.7	24	1.4	5.0	Fair bec fine. Cloudy, slt rain		
SUN	27	1002.3	16.9	11.8	14.4	10.9	16.1	<u>14.9</u>	280	16	15.0	30	3.0	10.0	Cloudy, rain & drzl bec fair. Shwr late evng		
MON	28	1012.2	15.9	10.8	13.4	8.3	15.7	14.8	240	13	12.6	33	<u>22.1</u>	0.9	Cloudy, shwrs. Rain evng bec mod rain. Fog patches later		
TUE	29	1012.1	16.6	13.7	15.5	12.0	15.3	14.8	230	14	13.6	29	0.4	0.6	Rain & drzl, tempo hvy. Tempo thick fog early. Cloudy, slt drzl		
WED	30	1022.0	16.9	12.0	14.5	10.0	15.3	14.8	280	12	10.3	22	2.9	12.0	Cloudy bec fair or fine. Cloudy late evng, slt rain		
MEAN		1018.6	16.9	11.3	14.1	8.4	14.7	13.9	W	9.6	10.0	TOTAL	66.1	272.1			
30 YEAR AVE. 1961-90		1018.0	16.8	10.9	13.9	8.8	15.5	14.0	W	11.2	10.5	////	46.4	239.3			
EXTREMES ARE IN BOLD TYPE	NUMBER OF DAYS WITH	RAIN ≥0.2mm	WET ≥1.0mm	SNOW/ SLEET	HAIL	THUNDER	LGHTNG	AIR FROST	GROUND FROST	FOG	FOG 9a.m.	GALE	NO SUN	TOTALS FOR YEAR TO DATE			
		14	11	0	0	1	2	0	0	9	0	0					
RECORDS FROM JANUARY 1947														RAINFALL	433.4 mm	SUNSHINE	991.7 hrs
WETTEST DAY	46.8mm	DRIEST MONTH	0.6mm	LOWEST MIN	5.4°C	WARMEST MNTH	16.7°C	SUNNIEST MNTH	355.3hrs	RAIN DAYS		94	SUNLESS DAYS		19		
DAY/YEAR	16th/1970	YEAR	1976	DAY/YEAR	1st/1975	YEAR	1976	YEAR	1975	WET DAYS		72					
WETTEST MNTH	129.7mm	HIGHEST MAX	30.8°C	LOWEST GRASS	-3.0°C	COLDEST MNTH	11.3°C	DULLEST MNTH	147.8hrs								
DAY/YEAR	1986	DAY/YEAR	26th/1976	DAY/YEAR	14th/1987	YEAR	1972	YEAR	1977								



**METEOROLOGICAL OBSERVATIONS AT GUERNSEY AIRPORT JULY 1999**

DAY	DATE	BAROMETER	TEMPERATURE deg C						WIND				RAIN	SUN	WEATHER			
		mb	AIR			GRASS	SOIL		DIR'N	SPEED(knots)								
		at 9a.m.	MAX	MIN	MEAN	MIN	30cm	100cm	9a.m.	9a.m.	MEAN	MAX	mm	hrs				
THU	1	1019.2	18.5	13.1	15.8	12.1	<u>15.6</u>	<u>14.8</u>	240	14	10.5	23	TR	10.2	Cloudy, tempo hvy rain early. Drzl, thick fog bec fair. Cloudy late evng			
FRI	2	1015.2	24.5	14.2	19.4	12.1	16.3	<u>14.8</u>	080	12	9.3	25	0.1	8.9	Cloudy, slt drzl am bec fine. Fair evng, slt shwr. Cloudy, mist			
SAT	3	1011.3	19.0	13.9	16.5	13.6	16.8	15.0	220	08	8.9	24	NIL	5.5	Cloudy. Slt drzl & fog early. Ocnl fair pm			
SUN	4	1010.2	18.6	14.7	16.7	13.2	16.8	15.2	160	07	6.0	14	<u>2.6</u>	2.0	Cloudy. Ocnl rain pm. Showery rain pm. tempo hvy rain			
MON	5	<u>1009.2</u>	19.3	14.8	17.1	13.6	16.8	15.4	180	07	4.6	11	NIL	5.6	Cloudy. Rain am. Tempo hvy rain mid am bec fair. Thick fog late pm			
TUE	6	1017.4	19.0	13.1	16.1	8.1	17.0	15.4	310	08	10.0	23	TR	10.9	Thick fog early. Tempo fine. Fog patches bec fair. Cloudy later			
WED	7	1026.7	18.4	14.3	16.4	12.6	16.8	15.5	280	08	8.7	18	NIL	3.8	Cloudy. Slt rain & drzl mid am. Ocnl fair			
THU	8	<u>1030.9</u>	23.4	13.8	18.6	11.6	16.8	15.6	020	04	6.8	15	NIL	14.3	Cloudy, ocnl fog early bec fair. Fine evng, dry air			
FRI	9	1027.6	21.8	15.7	18.8	13.9	17.3	15.6	070	11	12.5	27	NIL	<u>15.2</u>	Fine, slt dew early			
SAT	10	1023.5	21.9	14.5	18.2	12.5	17.3	15.8	040	12	10.5	23	NIL	13.3	Fine. Tempo cloudy mid am			
SUN	11	1020.7	22.6	14.6	18.6	10.9	17.3	15.9	020	15	11.4	27	NIL	12.7	Fine bec fair. Fine again			
MON	12	1017.3	22.4	15.5	19.0	14.2	17.6	16.0	020	12	11.0	25	NIL	14.1	Fine			
TUE	13	1012.0	22.8	15.4	19.1	10.0	17.7	16.1	200	02	10.2	25	TR	6.9	Fair or fine, dew early. Bec cloudy late am. Very light rain pm			
WED	14	1014.2	17.6	14.3	16.0	12.6	17.5	16.2	270	14	12.0	23	0.5	0.5	Cloudy, tempo fair early. Slt rain am. Slt rain & drzl pm. Tempo mod rain			
THU	15	1016.4	19.5	14.2	16.9	12.9	17.0	16.2	280	11	11.3	22	TR	11.8	Cloudy, drzl & fog early bec fair. Ocnl fine pm			
FRI	16	1021.6	17.4	13.9	15.7	11.6	17.2	16.1	250	09	6.8	15	TR	<u>NIL</u>	Fair bec cloudy. Tempo drzl midday			
SAT	17	1020.1	18.9	13.8	16.4	13.7	17.2	16.2	280	04	<u>3.7</u>	10	NIL	2.8	Cloudy. Bec fair pm			
SUN	18	1016.4	20.7	<u>12.0</u>	16.4	<u>5.1</u>	17.0	16.1	240	<u>02</u>	4.5	12	NIL	13.6	Fine, dew. Fog patches early. Fair or fine			
MON	19	1013.1	19.9	13.3	16.6	8.5	17.4	16.2	190	07	8.0	19	0.7	7.3	Fine, dew bec fair then cloudy. Ocnl fair pm			
TUE	20	1010.7	18.9	15.3	17.1	14.6	17.5	16.2	220	13	13.9	27	NIL	5.0	Cloudy, rain & drzl early. Fog patch. Ocnl fair pm			
WED	21	1019.5	19.1	14.8	17.0	13.7	17.3	16.3	270	14	16.9	29	TR	7.3	Cloudy bec fair pm. Cloudy later			
THU	22	1022.6	<u>16.8</u>	13.4	<u>15.1</u>	11.5	17.1	16.3	310	17	11.7	24	NIL	2.2	Mainly cloudy			
FRI	23	1027.5	19.6	12.7	16.2	10.0	16.9	16.3	350	04	4.3	13	NIL	12.2	Cloudy bec fair. Fine pm			
SAT	24	1025.4	22.5	13.3	17.9	6.3	17.3	16.3	140	05	5.7	14	NIL	14.5	Fine, slt dew. Shallow fog patch early. Dry air pm			
SUN	25	1020.0	<u>25.7</u>	15.5	<u>20.6</u>	12.5	17.9	16.5	060	04	9.2	23	NIL	14.3	Fine. Dry air. Fair late			
MON	26	1019.2	20.1	<u>16.2</u>	18.2	<u>15.7</u>	<u>18.4</u>	16.4	060	<u>25</u>	<u>24.3</u>	38	NIL	10.4	Fair, ocnl cloudy am			
TUE	27	1018.4	18.8	15.2	17.0	14.1	17.9	<u>16.7</u>	060	<u>25</u>	<u>24.3</u>	<u>43</u>	NIL	9.9	Fair			
WED	28	1018.8	20.7	15.1	17.9	13.7	17.6	<u>16.7</u>	050	17	17.5	33	NIL	8.8	Fair bec cloudy. Fair by late am bec fine pm			
THU	29	1019.6	21.9	15.4	18.7	13.4	17.8	16.6	060	09	9.5	22	NIL	9.3	Fine, dew bec cloudy, mist. Gradu fair or fine. Haze evening			
FRI	30	1015.8	20.4	14.4	17.4	8.0	18.1	16.6	270	06	5.7	15	NIL	10.3	Fair, haze & dew. Shallow fog early. Fog patches evng			
SAT	31	1015.0	17.6	14.9	16.3	12.4	18.3	<u>16.7</u>	280	04	5.5	12	NIL	0.8	Cloudy, ocnl fog. Tempo thick fog mid am. Fine, mist & dew late evng			
MEAN		1018.6	20.3	14.4	17.3	11.9	17.3	16.0	W	10.0	10.2	TOTAL	3.9	264.4				
30 YEAR AVE. 1961-90		1018.8	18.9	12.9	15.9	11.0	17.4	16.0	W	10.9	10.3	////	37.3	251.2				
EXTREMES ARE IN BOLD TYPE	NUMBER OF DAYS WITH	RAIN ≥0.2mm	WET ≥1.0mm	SNOW/ SLEET	HAIL	THNDER	LGHTNG	AIR FROST	GROUND FROST	FOG	FOG 9a.m.	GALE	NO SUN	TOTALS FOR YEAR TO DATE				
		3	1	0	0	0	0	0	0	10	1	0	1					
RECORDS FROM JANUARY 1947															RAINFALL	437.3 mm	SUNSHINE	1256.1 hrs
WETTEST DAY	59.0mm	DRIEST MONTH	6.6mm	LOWEST MIN	8.3°C	WARMEST MNTH	19.4°C	SUNNIEST MNTH	335.9hrs	RAIN DAYS	97	SUNLESS DAYS	20					
DAY/YEAR	6th/1969	YEAR	1983	DAY/YEAR	8th/1954	YEAR	1983	YEAR	1959	WET DAYS	73							
ETTEST MNTH	120.2mm	HIGHEST MAX	31.7°C	LOWEST GRASS	1.0°C	COLDEST MNTH	13.8°C	DULLEST MNTH	167.7hrs									
DAY/YEAR	1960	DAY/YEAR	1st/1952	DAY/YEAR	7th/1996	YEAR	1954	YEAR	1972									



**METEOROLOGICAL OBSERVATIONS AT GUERNSEY AIRPORT AUGUST 1999**

DAY	DATE	BAROMETER	TEMPERATURE deg C					WIND				RAIN	SUN	WEATHER				
		mb	AIR			GRASS	SOIL		DIR'N	SPEED(knots)			mm		hrs			
		at 9a.m.	MAX	MIN	MEAN	MIN	30cm	100cm	9a.m.	9a.m.	MEAN	MAX						
SUN	1	1015.4	22.7	14.4	18.6	7.6	18.1	16.8	--	00	3.5	10	TR	11.8	Fine, dew. Shallow fog, fog patches bec fair			
MON	2	1013.4	23.1	15.0	19.1	11.9	18.7	16.9	230	01	3.7	10	10.4	5.0	Cloudy, fog patches early bec fair. Cloudy by evng. Hvy rain later			
TUE	3	1012.4	20.9	14.3	17.6	12.4	18.6	17.0	230	05	6.7	15	NIL	13.1	Cloudy, rain early bec fine, dew. Tempo cloudy. Fair or fine			
WED	4	1008.2	19.7	16.6	18.2	15.2	18.6	17.2	100	09	9.0	23	12.6	2.0	Cloudy. Tempo fair. Hvy rain, T&L early pm. Fair late, mist & dew			
THU	5	1011.2	22.0	15.2	18.6	13.4	18.1	17.2	160	06	6.6	16	0.1	10.5	Ocnl cloudy early & evng. Fair or fine			
FRI	6	1009.0	18.7	15.7	17.2	14.3	18.6	17.2	120	04	5.5	12	5.2	NIL	Fair bec cloudy, mist. Ocnl rain. Fog evng, tempo thick fog			
SAT	7	1006.8	21.7	15.3	18.5	13.4	17.9	17.2	180	07	9.7	24	14.4	11.6	Fog early bec fair, ocnl cloudy am. TS & hvy rain late pm			
SUN	8	996.2	19.8	15.5	17.7	15.0	18.2	17.1	160	09	9.0	24	5.7	6.2	Cloudy, ocnl hvy rain early. Fog patch mid am bec fair Shwrs evng			
MON	9	1000.0	19.4	15.8	17.6	14.1	18.0	17.3	150	09	8.5	22	0.4	5.6	Cloudy, hvy shwr early. Shwrs am. Mainly fair pm. Mist & dew late			
TUE	10	1012.2	17.1	13.4	15.3	14.6	18.1	17.1	320	12	7.7	18	NIL	1.7	Cloudy, mist bec haze. Fair late evng			
WED	11	1021.5	18.3	13.0	15.7	8.3	17.4	17.2	160	06	4.0	11	TR	0.8	Cloudy. Slt rain late pm			
THU	12	1020.4	20.1	14.6	17.4	13.5	17.4	17.1	080	08	5.5	13	NIL	8.5	Cloudy bec fair late am. Fine pm			
FRI	13	1016.5	19.2	15.0	17.1	12.9	17.9	17.0	210	07	9.6	24	4.7	1.6	Fair, dew bec cloudy. Rain & drzl evng. Mist			
SAT	14	1005.6	18.6	14.5	16.6	14.1	17.6	17.1	190	09	15.3	29	3.1	6.2	Cloudy. Rain & drzl mid am. Fog patches bec fair then fine pm			
SUN	15	1011.0	17.5	14.2	15.9	11.6	17.2	17.1	260	06	9.8	19	NIL	1.5	Fine, dew bec cloudy. Shwrs am			
MON	16	1009.9	17.9	14.0	16.0	11.4	16.9	17.0	270	10	11.3	24	0.3	11.0	Mainly fair. Shwr early pm			
TUE	17	1006.7	17.2	13.8	15.5	10.8	16.8	17.0	200	17	13.0	27	7.2	0.1	Cloudy, rain late am. Ocnl rain & drzl. Hvy rain evng. Shwrs later			
WED	18	998.8	17.8	14.1	16.0	12.4	16.5	16.8	240	19	19.9	39	1.9	9.0	Cloudy, ocnl fair am. Slt shwrs. Bec fair pm. Shwr later			
THU	19	1012.8	17.9	13.3	15.6	11.9	16.2	16.7	250	14	13.3	26	TR	12.3	Mainly fair. Hvy shwr early			
FRI	20	1020.7	18.8	13.2	16.0	7.3	16.3	16.6	310	02	3.5	10	TR	8.2	Fine, dew. Shallow fog. Fair to cloudy. Slt shwr am			
SAT	21	1023.0	20.6	14.5	17.6	8.9	16.6	16.5	090	14	12.8	26	TR	10.3	Fair, dew early. Ocnl cloudy. Cloudy evng			
SUN	22	1020.2	19.7	14.7	17.2	12.7	16.6	16.5	100	12	13.5	23	TR	7.8	Cloudy, slt rain early. Fair late am. Cloudy late evng			
MON	23	1015.5	19.9	16.0	18.0	14.1	16.7	16.5	140	04	5.2	18	17.8	0.3	Cloudy, ocnl fair early bec haze. Rain late evng			
TUE	24	1014.6	21.2	14.9	18.1	14.4	17.0	16.5	130	05	6.7	17	1.6	0.1	Rain, ocnl hvy. Fog patches mid am. Cloudy pm bec fair later			
WED	25	1011.1	22.4	17.5	20.0	16.3	17.2	16.6	160	03	6.0	17	7.6	6.2	fair, haze bec cloudy. Slt rain am. Fair pm. Tstorm & hvy rain later			
THU	26	1014.5	18.5	15.9	17.2	15.7	17.6	16.6	240	10	10.9	23	TR	8.5	Cloudy, mist bec fair, cloudy evening			
FRI	27	1021.1	19.5	14.8	17.2	12.5	17.4	16.7	280	06	5.6	13	NIL	8.5	Cloudy, dew bec fair. Ocnl cloudy pm.			
SAT	28	1025.1	19.5	13.3	16.4	8.4	17.5	16.9	-	00	3.8	10	NIL	10.3	Fair of Fine, mist, shallow fog early, fog patches. Ocnl cloudy am.			
SUN	29	1022.4	21.6	13.8	17.7	8.2	17.5	16.9	150	03	3.4	08	NIL	9.7	Fine, dew. Shallow fog early. Fair.			
.HO	30	1021.6	19.2	14.6	16.9	10.0	17.7	16.9	360	04	5.8	14	NIL	10.1	Fair, dew bec cloudy, mist. Fog patch. Ocnl cloudy am. Fine pm.			
TUE	31	1021.9	18.8	13.1	16.0	7.2	17.3	16.9	300	08	6.9	14	NIL	9.0	Fine, dew bec fair. Ocnl cloudy early pm.			
MEAN		1013.5	19.7	14.6	17.2	12.1	17.5	16.9	S	7.4	8.2	TOTAL	93.0	207.5				
30 YEAR AVE. 1961-90		1017.6	19.0	13.4	16.2	11.0	17.5	16.7	W	10.9	10.3	////	45.6	225.9				
EXTREMES ARE IN BOLD TYPE	NUMBER OF DAYS WITH	RAIN ≥0.2mm	WET ≥1.0mm	SNOW/ SLEET	HAIL	THUNDER	LGHTNG	AIR FROST	GROUND FROST	FOG	FOG 9a.m.	GALE	NO SUN	TOTALS FOR YEAR TO DATE				
		14	12	0	0	3	4	0	0	8	1	0	1					
RECORDS FROM JANUARY 1947															RAINFALL	530.3 mm	SUNSHINE	1463.6 hrs
WETTEST DAY	55.8mm	DRIEST MONTH	3.8mm	LOWEST MIN	9.2°C	WARMEST MNTH	19.1°C	SUNNIEST MNTH	323.0hrs	RAIN DAYS	111	SUNLESS DAYS	21					
DAY/YEAR	22nd/1973	YEAR	1955	DAY/YEAR	28th/1986	YEAR	1995	YEAR	1955	WET DAYS	85							
WETTEST MNTH	122.0mm	HIGHEST MAX	32.8°C	LOWEST GRASS	0.8°C	COLDEST MNTH	14.3°C	DULLEST MNTH	139.2hrs									
DAY/YEAR	1951	DAY/YEAR	3rd/1990	DAY/YEAR	11th/1981	YEAR	1956	YEAR	1992									



**METEOROLOGICAL OBSERVATIONS AT GUERNSEY AIRPORT SEPTEMBER 1999**

DAY	DATE	BAROMETER	TEMPERATURE deg C						WIND				RAIN	SUN	WEATHER		
		mb	AIR			GRASS	SOIL		DIR'N	SPEED(knots)							
		at 9a.m.	MAX	MIN	MEAN	MIN	30cm	100cm	9a.m.	9a.m.	MEAN	MAX	mm	hrs			
WED	1	1023.7	18.3	12.9	15.6	5.1	16.9	16.9	320	07	5.0	14	TR	10.3	Fine, dew. Shallow fog patches.. Fair. Fine, shallow fog late		
THU	2	1022.4	22.3	13.7	18.0	7.4	16.9	16.9	040	06	7.1	16	NIL	<u>12.5</u>	Fine, shallow fog. Fog patches. Fair or fine		
FRI	3	1017.7	23.5	15.2	19.4	13.6	17.3	16.8	100	04	6.7	18	NIL	9.6	Fine, haze & dew bec fair. Dry air late am. Fine evng		
SAT	4	1019.6	22.1	14.0	18.1	8.2	17.0	16.8	030	07	7.6	17	NIL	12.4	Fine, dew. Mist bec haze. Fair bec fine, haze		
SUN	5	1014.3	<u>24.8</u>	16.2	<u>20.5</u>	13.6	17.3	16.8	080	<u>02</u>	<u>4.6</u>	12	TR	11.6	Fair, haze & dew bec mist. Fine, haze		
MON	6	1011.8	19.9	14.7	17.3	8.5	17.6	16.8	250	04	5.7	13	NIL	1.8	Fine, haze bec thick fog. Tempo fine am. Ocnl fog. Mist pm		
TUE	7	1014.2	18.8	15.2	17.0	12.3	17.5	16.8	220	13	8.7	20	0.3	3.3	Fine, haze & dew bec cloudy, mist. Slt rain late am. Tempo drzl		
WED	8	1017.8	20.6	15.8	18.2	14.7	17.4	16.9	180	11	8.7	20	1.4	6.6	Cloudy, rain & drzl early. Fine late bec fair. Cloudy late evng, haze		
THU	9	<u>1025.5</u>	18.6	13.1	15.9	12.8	17.6	<u>17.0</u>	010	09	8.3	19	NIL	9.4	Cloudy, mist. Rain early. Fine mid am. Fair pm. Fine late evng, dew		
FRI	10	1024.7	23.8	12.7	18.3	8.1	16.9	<u>17.0</u>	120	07	7.3	15	NIL	9.8	Fine, dew early. Tempo fair mid am. Haze pm. Fair		
SAT	11	1015.5	22.5	<u>16.8</u>	19.7	<u>15.8</u>	<u>17.7</u>	16.9	150	09	8.9	18	0.2	7.6	Fair, haze tempo fine early am. Haze pm, mist later. Slt shwr		
SUN	12	1016.6	17.6	13.2	15.4	10.3	17.6	16.9	270	07	7.5	17	NIL	7.7	Cloudy, mist. Drzl early. Gradu fair from mid am. Tempo cloudy pm		
MON	13	1013.7	16.9	12.3	14.6	6.8	17.1	16.9	300	07	7.0	16	TR	6.2	Fair to cloudy. Cloudy evng		
TUE	14	1014.4	17.1	11.3	14.2	11.6	16.6	16.9	360	08	8.6	18	TR	4.0	Fair to cloudy am, slt shwrs bec fair or fine pm		
WED	15	1016.0	17.4	<u>10.0</u>	<u>13.7</u>	<u>1.0</u>	16.1	16.8	260	06	6.7	18	1.5	8.9	Fine, dew early. Cloudy by evng		
THU	16	1006.8	17.4	14.8	16.1	9.9	16.3	16.7	180	14	14.1	29	NIL	5.8	Cloudy, ocnl rain am, bec mainly fair late am		
FRI	17	1007.7	18.4	14.3	16.4	11.7	16.1	16.6	220	13	10.7	22	1.1	9.4	Fair, ocnl fine early. Slt shwr late evng		
SAT	18	1001.0	<u>16.6</u>	14.5	15.6	8.0	16.2	16.5	160	15	16.4	34	<u>20.0</u>	<u>0.1</u>	Fine bec cloudy mid am, rain. Hvy rain late am. Ocnl hvy rain		
SUN	19	991.6	18.0	13.5	15.8	12.2	16.0	16.5	170	11	8.2	22	5.0	6.2	Cloudy, rain early. Fair late am. Cloudy late evng, hvy shwr		
MON	20	<u>988.4</u>	17.6	13.3	15.5	11.6	16.2	16.4	230	06	5.1	16	NIL	5.7	Cloudy, rain early. Fair late am. Ocnl cloudy pm. Lghtng evng		
TUE	21	995.3	18.2	12.2	15.2	7.5	16.0	16.3	200	10	7.0	20	0.8	3.9	Fair bec mainly cloudy. Shwrs pm		
WED	22	999.1	19.4	14.7	17.1	11.8	16.3	16.3	150	10	10.7	27	16.4	2.7	Cloudy. Tstorm & hvy rain late am. Ocnl fair pm, fine evng		
THU	23	1003.6	18.6	16.0	17.3	13.6	16.3	16.2	180	15	15.0	30	6.9	4.3	Fair bec cloudy. Shwrs late am. Mainly fair pm		
FRI	24	1010.8	20.0	15.7	17.9	13.8	16.3	16.3	190	12	14.6	27	NIL	7.4	Fine bec cloudy, hvy shwrs early. Fair late am.		
SAT	25	1008.8	17.8	14.7	16.3	13.5	16.4	16.3	200	13	12.7	25	NIL	2.7	Fine, dew bec cloudy. Ocnl fair		
SUN	26	1007.0	17.2	13.7	15.5	11.2	16.0	16.3	240	12	12.8	33	4.0	7.4	Cloudy bec fair. Cloudy evng, tempo heavy rain		
MON	27	1000.8	17.4	13.4	15.4	11.8	15.9	16.2	220	15	17.2	33	9.3	2.2	Rain & drzl early. Mainly cloudy. Shwrs pm. Hvy shwrs late evng		
TUE	28	1007.0	<u>16.6</u>	13.6	15.1	11.4	15.6	16.2	250	14	15.2	29	4.9	1.1	Cloudy bec fair. Cloudy late am. Rain & drzl pm. Fair late		
WED	29	1001.9	17.1	15.2	16.2	13.9	15.7	16.0	220	<u>16</u>	16.6	30	1.5	<u>0.1</u>	Fair bec cloudy. Tempo slt shwrs. Ocnl fair late		
THU	30	997.9	16.7	12.8	14.8	10.8	<u>15.4</u>	<u>15.9</u>	300	15	<u>19.1</u>	<u>37</u>	0.1	4.8	Mainly cloudy, shwrs early. Ocnl fair am.		
MEAN		1009.9	19.0	14.0	16.5	10.8	16.6	16.6	S	9.9	10.1	TOTAL	73.4	185.5			
30 YEAR AVE. 1961-90		1017.7	17.5	12.5	15.0	9.8	15.9	16.0	W	11.8	11.3	////	64.1	168.4			
EXTREMES ARE IN BOLD TYPE	NUMBER OF DAYS WITH	RAIN ≥0.2mm	WET ≥1.0mm	SNOW/ SLEET	HAIL	THUNDER	LGHTNG	AIR FROST	GROUND FROST	FOG	FOG 9a.m.	GALE	NO SUN	TOTALS FOR YEAR TO DATE			
		14	11	0	0	1	2	0	0	4	1	0	0				
RECORDS FROM JANUARY 1947														RAINFALL	603.7 mm	SUNSHINE	1649.1 hrs
WETTEST DAY	43.7mm	DRIEST MONTH	6.9mm	LOWEST MIN	5.8°C	WARMEST MNTH	17.5°C	SUNNIEST MNTH	266.5hrs	RAIN DAYS	125	SUNLESS DAYS	21				
DAY/YEAR	20th/1949	YEAR	1997	DAY/YEAR	28th/1974	YEAR	1949	YEAR	1959	WET DAYS	96						
WETTEST MNTH	194.5mm	HIGHEST MAX	30.6°C	LOWEST GRASS	-1.0°C	COLDEST MNTH	12.8°C	DULLEST MNTH	104.5hrs								
DAY/YEAR	1952	DAY/YEAR	2nd/1961	DAY/YEAR	23rd/1979	YEAR	1986	YEAR	1956								



**METEOROLOGICAL OBSERVATIONS AT GUERNSEY AIRPORT OCTOBER 1999**

DAY	DATE	BAROMETER	TEMPERATURE deg C						WIND				RAIN	SUN	WEATHER			
		mb	AIR			GRASS	SOIL		DIR'N	SPEED(knots)			mm	hrs				
		at 9a.m.	MAX	MIN	MEAN	MIN	30cm	100cm	9a.m.	9a.m.	MEAN	MAX						
FRI	1	1009.5	16.2	13.4	<u>14.8</u>	11.4	<u>15.3</u>	<u>16.0</u>	250	19	19.8	35	3.3	3.4	Cloudy, ocnl fair. Slt rain & drzl later			
SAT	2	1000.3	15.1	10.3	12.7	10.3	15.0	15.8	260	14	<u>20.3</u>	48	3.3	5.5	Cloudy, tempo slt rain. Hvy rain mid am, bec fair late am. Slt shwrs			
SUN	3	1006.2	15.2	9.6	12.4	7.4	14.4	15.8	290	17	18.0	39	0.3	6.8	Shwrs early. T & L. Mainly fair. Slt shwrs pm			
MON	4	1018.8	13.5	9.0	11.3	6.3	13.8	15.6	330	14	11.7	30	TR	<u>10.2</u>	Mainly fine. Shwr am			
TUE	5	1026.1	14.6	8.6	11.6	3.3	13.5	15.3	050	07	6.2	15	NIL	8.2	Fair or fine. Slt shwr mid am. Fine, dry air pm			
WED	6	1030.1	14.2	8.9	11.6	4.8	13.2	15.1	120	06	4.4	11	NIL	9.7	Fine bec fair. Dry air. Tempo cloudy late pm			
THU	7	1029.8	14.5	8.6	11.6	<u>1.2</u>	13.0	14.9	240	06	8.5	22	TR	3.0	Cloudy bec fine. Cloudy again. Slt rain evng. Ocnl fair			
FRI	8	1027.2	16.0	13.2	14.6	9.7	13.5	14.7	250	16	16.7	28	NIL	2.1	Cloudy, slt drzl mid am. Tempo fair early pm			
SAT	9	1026.7	16.2	13.0	14.6	11.1	13.6	14.6	260	12	12.3	22	1.8	2.4	Fair bec cloudy. Fair late am. Drzl and fog later			
SUN	10	1026.0	15.6	<u>13.7</u>	14.7	<u>13.3</u>	14.1	14.6	250	07	9.5	18	TR	<u>NIL</u>	Cloudy, drzl ocnl fog am. Fog patches evng. Drzl			
MON	11	1028.5	14.7	9.7	12.2	11.6	14.3	14.7	340	08	7.0	15	NIL	4.7	Cloudy, slt drzl early. Bec fair pm. Tempo fine			
TUE	12	<u>1030.2</u>	15.0	8.6	11.8	1.4	13.6	14.6	050	06	8.0	22	NIL	5.1	Fine bec cloudy. Fair pm			
WED	13	1028.1	15.3	11.6	13.5	8.4	13.4	14.6	060	15	14.3	28	NIL	7.8	Fair, ocnl cloudy early			
THU	14	1025.2	15.8	11.6	13.7	9.0	13.1	14.6	070	17	14.3	24	0.9	4.8	Fine bec fair. Cloudy pm. Haze evng. Slt rain late			
FRI	15	1018.5	14.9	13.3	14.1	12.0	13.5	14.4	130	10	7.3	19	1.9	<u>NIL</u>	Cloudy, haze or mist. Ocnl rain & drzl early & pm. Fog patches pm			
SAT	16	1020.1	16.6	11.7	14.2	6.9	13.5	14.3	040	03	6.0	16	NIL	2.7	Fair or fine, mist & shallow fog bec ocnl fog. Mainly cloudy. Haze			
SUN	17	1015.3	16.0	11.6	13.8	8.1	13.6	14.3	070	12	12.4	25	NIL	5.7	Fair or fine, dew. Mainly fair			
MON	18	1012.4	13.1	9.5	11.3	7.7	13.0	14.2	060	20	18.9	33	NIL	7.6	Fine bec fair. Fine again lat, dry air			
TUE	19	1009.2	<u>11.4</u>	7.8	<u>9.6</u>	4.7	12.3	14.2	070	<u>21</u>	14.6	31	0.1	8.6	Fine, dry air early. Ocnl dry air. Bec cloudy evening			
WED	20	1001.0	12.6	<u>7.5</u>	10.1	5.2	<u>11.8</u>	13.8	090	10	14.5	28	2.8	0.4	Cloudy bec haze. Slt rain & drzl mid am & evng. Mist			
THU	21	994.0	14.3	11.5	12.9	10.6	12.2	13.8	150	05	10.3	32	8.7	0.4	Rain, drzl & mist early. Cloudy, tempo fair am. Hvy rain evng. Fair			
FRI	22	992.8	14.8	12.5	13.7	11.0	12.7	13.6	150	12	13.2	28	8.7	1.6	Fair bec cloudy. Rain late am. Tempo fair pm. Hvy shwrs evng			
SAT	23	990.1	16.5	12.5	14.5	10.5	12.8	13.6	190	18	16.2	30	<u>19.8</u>	4.7	Cloudy, shwrs bec fair. T & L, hvy shwr pm. Fair. Cloudy rain later			
SUN	24	<u>981.6</u>	14.8	10.3	12.6	9.2	12.8	13.6	250	15	15.2	<u>58</u>	0.3	3.2	Cloudy, rain ocnl hvy early. Gale mid am. Hvy shwr. Fair pm. Shwrs			
MON	25	992.5	<u>16.8</u>	8.9	12.9	2.6	12.3	13.7	040	<u>02</u>	6.4	18	9.8	4.5	Fair or fine, dew early. Bec cloudy early pm. Hvy shwrs evng. T & L			
TUE	26	1015.9	15.8	9.2	12.5	4.7	12.6	13.5	290	07	6.5	15	TR	6.7	Fine, dew bec cloudy. Fair or fine late am. Fine, dew evng			
WED	27	1026.4	15.5	9.5	12.5	4.3	12.4	13.5	160	07	6.1	14	1.7	4.5	Fine, dew bec cloudy mid am. Fine early pm. Mist evng bec cloudy			
THU	28	1023.5	16.0	12.4	14.2	9.1	12.6	<u>13.4</u>	160	06	<u>4.3</u>	12	TR	0.8	Cloudy. Mod rain early. Tempo fair am. Mist or haze. Fog patche evng			
FRI	29	1024.3	16.0	11.8	13.9	6.3	12.9	<u>13.4</u>	090	06	7.9	20	0.1	0.3	Fine, dew bec cloudy, mist. Thick fog late am. Slt rain pm			
SAT	30	1006.3	15.6	11.6	13.6	12.0	13.2	<u>13.4</u>	160	16	17.0	40	8.2	0.8	Fair, mist & dew bec cloudy. Rain early pm bec fair. Shwrs evng			
SUN	31	1020.7	15.8	11.8	13.8	8.4	12.8	13.5	230	13	15.3	33	3.2	5.8	Cloudy early bec fair or fine. Bec cloudy early pm			
MEAN		1014.8	15.1	10.7	12.9	7.8	13.3	14.4	W	11.2	11.7	TOTAL	74.9	132.0				
30 YEAR AVE. 1961-90		1016.4	14.7	10.5	12.6	8.0	13.3	14.2	W	12.6	12.5	////	84.9	117.2				
EXTREMES ARE IN BOLD TYPE	NUMBER OF DAYS WITH	RAIN ≥0.2mm	WET ≥1.0mm	SNOW/ SLEET	HAIL	THUNDER	LGHTNG	AIR FROST	GROUND FROST	FOG	FOG 9a.m.	GALE	NO SUN	TOTALS FOR YEAR TO DATE				
		15	12	0	0	3	4	0	0	6	1	1	2					
RECORDS FROM JANUARY 1947															RAINFALL 678.6 mm		SUNSHINE 1781.1 hrs	
WETTEST DAY DAY/YEAR	46.2mm 7th/1987	DRIEST MONTH YEAR	3.4mm 1978	LOWEST MIN DAY/YEAR	3.9°C 30th/1983	WARMEST MNTH YEAR	14.7°C 1995	SUNNIEST MNTH YEAR	176.4hr 1971	RAIN DAYS 140						SUNLESS DAYS 23		
WETTEST MNTH DAY/YEAR	233.9mm 1960	HIGHEST MAX DAY/YEAR	23.3°C 4th,5th/1959	LOWEST GRASS DAY/YEAR	-4.0°C 30th/1983	COLDEST MNTH YEAR	9.6°C 1974	DULLEST MNTH YEAR	72.6hrs 1968	WET DAYS 108								



**METEOROLOGICAL OBSERVATIONS AT GUERNSEY AIRPORT NOVEMBER 1999**

DAY	DATE	BAROMETER	TEMPERATURE deg C					WIND				RAIN	SUN	WEATHER				
		mb	AIR			GRASS	SOIL		DIR'N	SPEED(knots)			mm		hrs			
		at 9a.m.	MAX	MIN	MEAN	MIN	30cm	100cm	9a.m.	9a.m.	MEAN	MAX						
MON	1	1008.2	<u>16.8</u>	<u>13.2</u>	<u>15.0</u>	<u>10.8</u>	12.8	13.4	160	13	15.9	36	1.6	NIL	Cloudy. Ocnl rain or drzl from mid am. Tempo heavy rain			
TUE	2	1020.7	14.0	10.3	12.2	9.1	<u>12.9</u>	13.4	290	14	12.6	25	TR	6.3	Cloudy bec fair, ocnl fine. Slight showers early pm			
WED	3	1032.9	14.9	8.5	11.7	3.5	12.2	<u>13.5</u>	240	03	6.0	14	NIL	2.3	Fine bec mainly cloudy. Slight showers mid am, bec fair pm			
THU	4	1024.4	12.7	10.6	11.7	7.1	12.1	13.3	160	12	10.9	26	0.2	5.2	Fine bec fair. Cloudy late evening			
FRI	5	<u>1003.3</u>	14.7	9.0	11.9	8.6	11.9	13.3	170	21	21.3	<u>44</u>	7.9	1.2	Cloudy. Slt rain mid am. Mod to hvy rain early pm. Ocnl shwrs. Hall late			
SAT	6	1016.1	11.4	8.5	10.0	5.9	11.5	13.1	300	18	17.5	34	NIL	<u>8.3</u>	Fair bec fine. Shower early. Dry air pm			
SUN	7	1029.3	13.2	7.7	10.5	2.5	10.8	12.9	260	03	6.3	20	TR	0.1	Mainly fair early bec cloudy. Slight showers pm			
MON	8	1033.4	12.1	9.5	10.8	5.7	11.2	12.7	300	10	4.8	14	0.8	0.2	Cloudy. Rain or drzl early pm. Shallow fog evng. Fog patch			
TUE	9	1037.3	13.9	10.5	12.2	6.0	11.5	12.7	020	08	10.0	22	TR	4.8	Cloudy. Slt shwr early. Tempo rain bec fair, tempo fine. Ocnl cloudy			
WED	10	<u>1039.0</u>	11.1	8.8	10.0	6.5	11.3	12.6	010	12	15.0	34	TR	3.8	Fair ocnl cloudy pm. Slight showers later			
THU	11	1034.6	11.5	9.5	10.5	7.6	10.9	12.5	030	20	19.7	37	0.6	2.7	Fair ocnl cloudy. Slt shwrs evng.. Rain later			
FRI	12	1027.3	10.2	8.1	9.2	5.9	10.4	12.5	080	15	17.8	33	NIL	5.1	Cloudy bec fair. Ocnl fine midday. Cloudy evening			
SAT	13	1022.7	11.3	7.8	9.6	5.9	10.1	12.2	060	<u>23</u>	<u>21.8</u>	37	TR	5.6	Cloudy, ocnl fair am. Fair ocnl fine pm. Cloudy later			
SUN	14	1021.6	11.1	9.5	10.3	7.0	10.3	12.1	030	13	14.1	28	TR	NIL	Cloudy. Slt rain & drzl early. Slight shower pm			
MON	15	1022.9	11.0	8.1	9.6	5.3	10.2	11.9	020	08	6.4	21	1.6	1.2	Cloudy, ocnl fair am. Slight shower midday			
TUE	16	1019.5	10.8	6.9	8.9	2.1	10.0	11.9	320	14	13.2	34	1.4	5.2	Cloudy. Mod rain mid am. Fair. Shwrs evng, hail			
WED	17	1020.5	9.3	6.1	7.7	3.6	9.5	11.7	320	18	15.1	41	6.9	2.0	Fair bec mainly cloudy mid am, shwrs. Ice pellets. Hvy shwr pm			
THU	18	1010.6	10.8	4.8	7.8	4.0	9.5	11.5	290	16	15.2	34	0.8	1.8	Rain, ocnl hvy early, bec shwrs. Ocnl fair pm. Tempo dry air			
FRI	19	1019.9	8.1	5.4	6.8	2.9	9.0	11.4	350	14	16.5	33	0.2	4.7	Cloudy bec fair. Slt shwr pm, ice pellets. Shwrs evng, lghtng			
SAT	20	1022.7	7.1	4.4	5.8	4.2	8.6	11.2	010	16	15.8	35	<u>18.9</u>	2.5	Fair bec cloudy pm. Shwrs. Rain late pm, ocnl hvy rain			
SUN	21	1020.1	<u>5.1</u>	<u>3.4</u>	<u>4.3</u>	2.3	8.1	11.0	060	06	<u>4.3</u>	16	5.4	NIL	Rain, ocnl heavy early. Ocnl slt rain pm. Tempo fair late			
MON	22	1019.0	10.6	4.7	7.7	1.2	<u>8.0</u>	10.8	250	<u>02</u>	8.7	20	2.4	0.2	Cloudy, slt shwrs early. Hvy rain mid am. Rain & drzl early pm. Fine late			
TUE	23	1024.2	13.7	8.2	11.0	5.2	8.6	10.6	280	07	8.6	17	TR	3.0	Cloudy, ocnl shwrs mid am. ocnl fair. Cloudy late pm			
WED	24	1026.8	13.0	10.2	11.6	6.5	9.2	<u>10.5</u>	220	10	11.6	22	NIL	6.3	Cloudy bec mainly fair. Cloudy late evng			
THU	25	1029.4	13.5	11.1	12.3	8.5	9.7	10.6	220	13	12.5	25	NIL	1.5	Cloudy bec fair pm. Few evng			
FRI	26	1022.5	11.8	7.3	9.6	5.8	9.8	10.6	160	18	16.1	30	1.5	0.2	Fair, dew bec cloudy. Rain evng, fine later			
SAT	27	1023.5	12.9	7.8	10.4	3.9	9.7	10.7	280	<u>02</u>	10.9	26	TR	5.0	Fine bec cloudy, shwrs. Mainly fair. Cloudy by evng, slt rain or drzl			
SUN	28	1017.0	12.4	10.3	11.4	7.8	9.9	10.7	160	17	17.7	34	0.1	NIL	Cloudy, tempo fair mid am & late pm			
MON	29	1019.0	11.9	9.1	10.5	8.8	10.1	10.7	180	09	10.0	27	0.2	NIL	Cloudy, rain mid am. Ocnl slt rain or drzl. Mist evng			
TUE	30	1031.4	11.7	4.5	8.1	<u>-1.3</u>	9.8	10.8	250	03	10.9	29	TR	5.4	Cloudy bec fair or fine. Bec cloudy pm, slt rain late			
MEAN		1023.3	11.8	8.1	9.9	5.4	10.3	11.9	W	11.9	12.9	TOTAL	50.5	84.6				
30 YEAR AVE. 1961-90		1015.7	11.2	7.4	9.3	5.0	10.1	11.6	SW	14.0	14.1	////	102.1	71.7				
EXTREMES ARE IN BOLD TYPE	NUMBER OF DAYS WITH	RAIN ≥0.2mm	WET ≥1.0mm	SNOW/ SLEET	HAIL	THNDER	LGHTNG	AIR FROST	GROUND FROST	FOG	FOG 9a.m.	GALE	NO SUN	TOTALS FOR YEAR TO DATE				
		15	9	0	4	0	2	0	1	1	0	0	5					
RECORDS FROM JANUARY 1947															RAINFALL	729.1 mm	SUNSHINE	1865.7 hrs
WETTEST DAY	39.4mm	DRIEST MONTH	16.1mm	LOWEST MIN		0.0°C		WARMEST MNTH		12.0°C		SUNNIEST MNTH	117.7hr	RAIN DAYS	155	SUNLESS DAYS	28	
DAY/YEAR	15th/1975	YEAR	1978	18th/1952, 19th/1985, 22nd, 28th/1993		YEAR		1994		YEAR		1988	YEAR	1988	YEAR	1988	YEAR	
VETTEST MNTH	192.5mm	HIGHEST MAX	16.7°C	LOWEST GRASS		-5.6°C		COLDEST MNTH		7.7°C		DULLEST MNTH	35.9hrs	WET DAYS	117			
DAY/YEAR	1965	DAY/YEAR	6th/1955	DAY/YEAR		29th/1987		YEAR		1993		YEAR	1994	YEAR	1994	YEAR	1994	



**METEOROLOGICAL OBSERVATIONS AT GUERNSEY AIRPORT DECEMBER 1999**

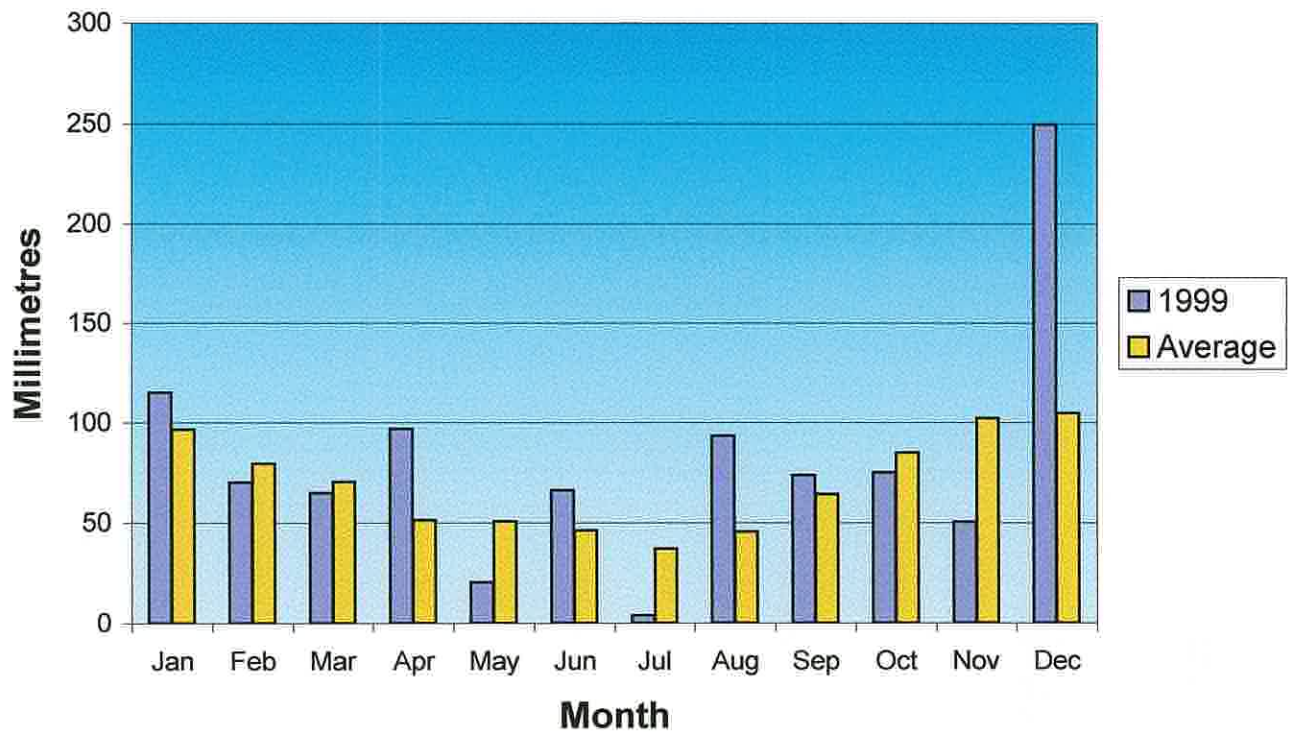
AY	DATE	BAROMETER	TEMPERATURE deg C						WIND				RAIN	SUN	WEATHER
		mb	AIR			GRASS	SOIL		DIR'N	SPEED(knots)					
		at 9a.m.	MAX	MIN	MEAN	MIN	30cm	100cm	9a.m.	9a.m.	MEAN	MAX	mm	hrs	
ED	1	1026.4	12.2	9.8	11.0	8.4	9.8	<u>10.8</u>	250	17	15.6	30	1.9	NIL	Cloudy, ocnl slt rain or drzl am. rain & drzl early pm, fog patch. Rain evng
HU	2	<u>1029.6</u>	12.2	8.8	10.5	5.3	<u>9.9</u>	10.7	280	09	12.6	24	TR	3.1	Fair bec cloudy. Fair late am. Cloudy by evng
RI	3	1015.6	12.2	8.5	10.4	6.2	9.7	10.7	230	25	19.7	45	1.6	0.1	Cloudy. Rain & drzl late am & pm
AT	4	1015.4	9.0	6.0	7.5	3.7	9.6	<u>10.8</u>	290	13	15.3	34	0.7	2.5	Cloudy, rain early bec fair. Shwrs. Ice pellets evng
JN	5	1028.4	9.4	5.7	7.6	2.2	8.7	10.7	300	08	10.3	25	TR	5.5	Fine bec fair. Slt shwr pm bec cloudy evng
DN	6	1023.8	11.4	8.1	9.8	3.9	8.8	10.5	220	21	20.3	37	4.4	NIL	Cloudy, ocnl slt rain am. Rain & drzl pm
JE	7	1015.3	12.0	8.4	10.2	<u>8.6</u>	9.3	10.3	250	14	17.5	34	6.3	3.0	Cloudy, rain & drzl. Fog patch mid am. Ocnl fair pm. Hvy shwrs
ED	8	1010.7	11.5	8.4	10.0	5.7	9.3	10.3	200	20	19.7	42	8.5	0.5	Fine bec cloudy. hvy shwrs am. Rain or drzl pm. Tempo hvy rain
HU	9	999.7	10.0	6.4	8.2	3.2	9.1	10.3	250	20	20.1	37	1.6	3.2	Fair, shwrs. Ice pellets
RI	10	1006.8	11.3	6.1	8.7	3.7	8.7	10.2	290	15	17.9	36	19.1	1.3	Mainly cloudy, shwrs. Ice pellets. Rain pm. Hvy rain evng
AT	11	997.1	12.2	<u>10.8</u>	<u>11.5</u>	4.4	9.0	10.2	220	23	22.6	46	19.3	NIL	Cloudy, rain or drzl. Mist. Hvy rain early pm. Cloudy. Hvy rain late
JN	12	<u>992.6</u>	11.6	6.3	9.0	6.0	9.5	10.1	270	22	22.8	50	6.0	0.8	Rain, ocnl hvy bec shwrs. Hail. Ocnl fair evng. Lghtng
DN	13	1008.8	10.2	6.3	8.3	3.3	8.6	10.2	230	23	19.6	44	7.6	0.8	Mainly cloudy. Shwrs. Hvy rain & hail mid am. T&L late am. Shwrs
JE	14	1001.4	7.6	3.8	5.7	0.3	8.3	10.1	310	15	12.5	40	3.9	1.2	Mainly cloudy. Rain & hail shwrs. Squall early. Fair midday
ED	15	1016.1	5.9	2.2	4.1	0.0	7.5	9.9	360	16	16.3	37	NIL	5.2	Rain, hail & sleet shwrs bec mainly fair. Gradu cloudy pm. Fair late
HU	16	1028.5	8.8	4.4	6.6	1.9	6.9	9.6	340	16	14.0	30	1.8	2.3	Fair bec mainly cloudy. Ocnl fair pm. Slt shwr evng
RI	17	1018.0	11.5	7.2	9.4	3.0	7.3	9.4	230	<u>27</u>	22.7	43	17.0	NIL	Cloudy, rain from mid am. Rain & drzl, mist. Fog patch late
AT	18	1014.5	11.6	7.2	9.4	7.3	8.4	9.3	060	09	16.0	39	8.8	NIL	Rain, drzl & mist. Fog patches early & pm. Hvy rain mid am. Rain & drzl
JN	19	1020.0	11.7	1.7	6.7	4.1	8.8	9.4	020	14	14.7	35	NIL	5.8	Rain & drzl early. Cloudy bec fine. Dry air pm
DN	20	<u>1029.6</u>	<u>5.2</u>	<u>0.7</u>	<u>3.0</u>	<u>-4.1</u>	7.3	9.4	130	<u>03</u>	9.4	29	4.6	2.7	Fine bec fair. Ocnl cloudy. Cloudy late evng
JE	21	1022.6	6.0	4.3	5.2	0.8	6.6	9.3	160	18	15.8	32	2.7	NIL	Cloudy, rain by mid am. Rain & drzl, mist. Cloudy pm
ED	22	1016.8	<u>12.3</u>	5.2	8.8	4.4	6.9	9.1	150	18	16.6	34	11.2	NIL	Cloudy bec mist. Drzl, rain late am. Hvy rain & drzl evng, fog patches
HU	23	1020.9	10.9	6.9	8.9	4.2	7.6	9.0	200	13	16.5	37	14.9	6.0	Rain bec shwrs. Mainly fair. Cloudy evng. Rain late
RI	24	1003.5	11.7	9.6	10.7	7.3	8.1	9.0	230	21	<u>25.5</u>	53	<u>34.6</u>	NIL	Rain bec hvy, mist. Rain & drzl late am. Hvy rain evng. Gale
AS	25	995.4	11.7	5.3	8.5	0.6	8.5	9.0	240	17	24.1	51	30.6	1.4	Shwrs. T&L, hail early. T&L late am. Shwrs. Rain late
AY	26	993.7	10.0	4.5	7.3	4.1	7.9	9.1	280	21	23.0	<u>63</u>	7.3	NIL	Hvy rain to mid am. Cloudy, shwrs. Tempo gale pm. Ice pellets late
IOL	27	996.7	8.2	3.6	5.9	3.0	7.5	9.0	190	05	16.8	46	17.7	NIL	Shwrs early. Cloudy. Rain pm, ocnl hvy rain. Shwrs late
IOL	28	1003.5	7.2	4.5	5.9	1.7	7.0	9.0	310	13	13.4	31	TR	2.8	Shwrs early. Cloudy. Fair pm
ED	29	1018.2	8.6	3.9	6.3	-0.4	<u>6.5</u>	8.8	320	11	10.1	21	TR	<u>6.2</u>	Fair or fine
HU	30	1024.3	10.0	3.3	6.7	-1.9	<u>6.5</u>	8.6	230	13	14.3	35	12.4	NIL	Fine bec cloudy. Slt rain bec mod rain pm. Mist evng
RI	31	1021.1	11.0	9.3	10.2	7.4	7.3	<u>8.5</u>	310	04	<u>7.8</u>	20	5.1	0.4	Slt rain early. Cloudy. Tempo fair early pm. Drzl, fog patch pm
MEAN		1013.4	10.2	6.0	8.1	3.5	8.2	9.7	W	15.6	16.9	TOTAL	249.6	54.8	
30 YEAR AVE. 1961-90		1016.2	9.3	5.6	7.4	3.8	7.8	9.3	SW	14.8	14.9	////	104.7	51.1	
EXTREMES ARE IN BOLD TYPE	NUMBER OF DAYS WITH	RAIN ≥0.2mm	WET ≥1.0mm	SNOW/ SLEET	HAIL	THNDER	LGHTNG	AIR FROST	GROUND FROST	FOG	FOG 9a.m.	GALE	NO SUN	TOTALS FOR YEAR TO DATE	
		25	24	2	9	2	4	0	3	5	0	2	11		
RECORDS FROM JANUARY 1947															
WETTEST DAY	42.2mm	DRIEST MONTH	28.1mm	LOWEST MIN	-3.8°C	WARMEST MNTH	10.1°C	SUNNIEST MNTH	98.5hrs	RAINFALL 978.7 mm SUNSHINE 1920.5 hrs					
DAY/YEAR	30th/1978	YEAR	1953	DAY/YEAR	24th/1963	YEAR	1953	YEAR	1962	RAIN DAYS 180 SUNLESS DAYS 39					
WETTEST MNTH	227.2mm	HIGHEST MAX	15.6°C	LOWEST GRASS	-8.9°C	COLDEST MNTH	4.6°C	DULLEST MNTH	26.6hrs	WET DAYS 141					
DAY/YEAR	1965	DAY/YEAR	6th/1953	DAY/YEAR	29th/1964	YEAR	1950	YEAR	1966						



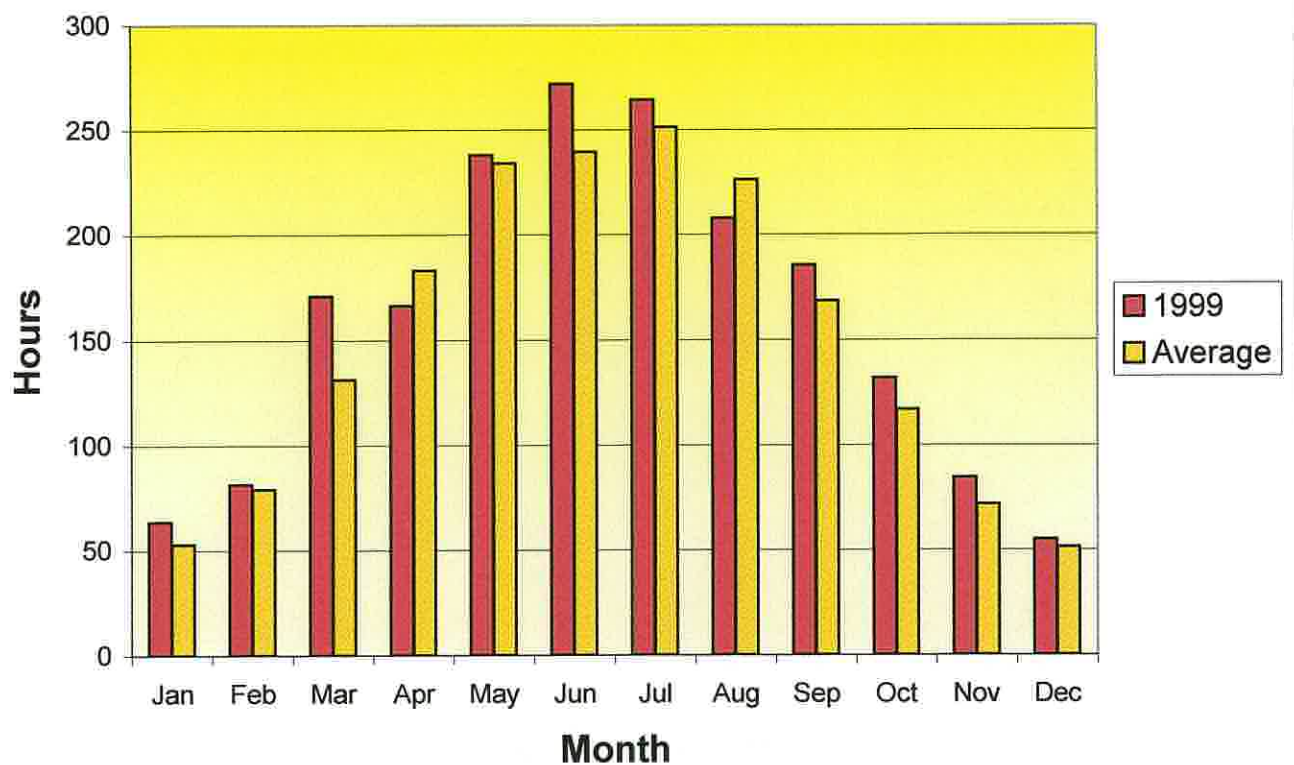
# Guernsey Airport Met. Office

Appendix I

## Monthly Rainfall



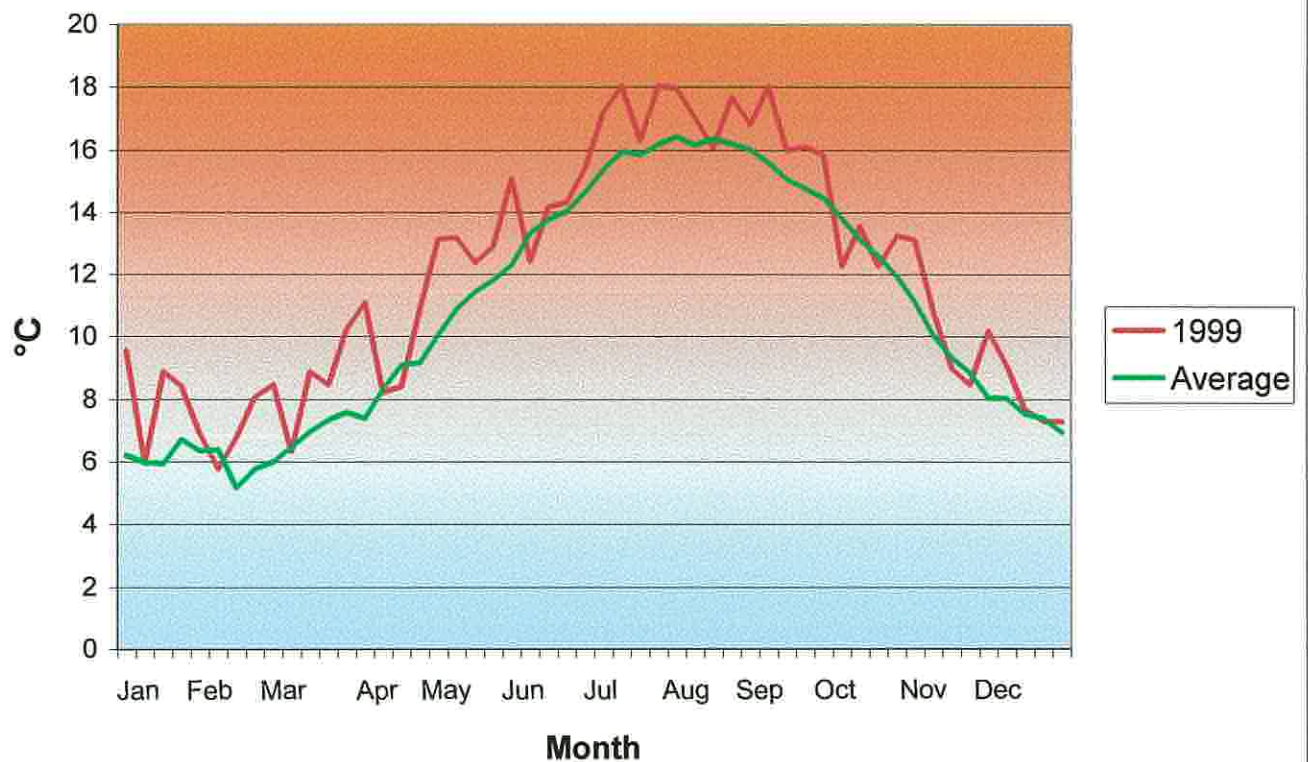
## Monthly Sunshine



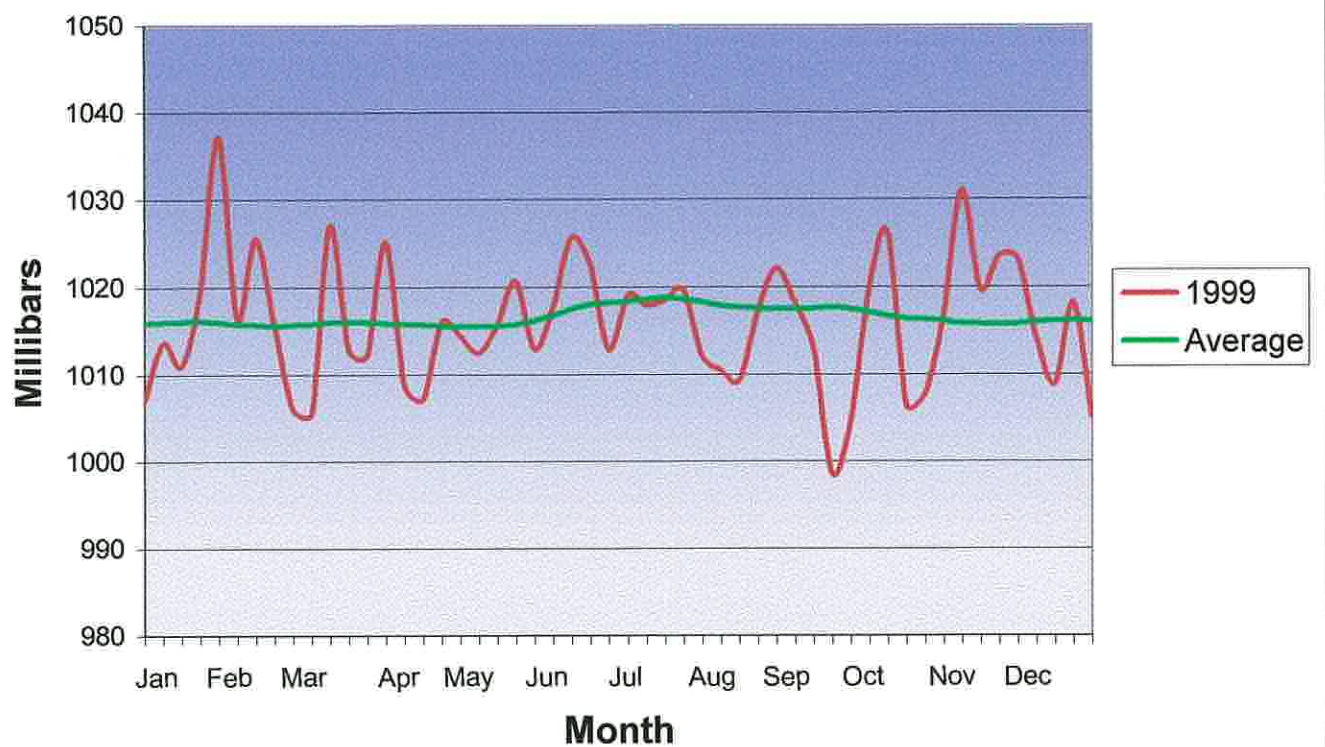
# Guernsey Airport Met. Office

Appendix II

## Weekly Mean Air Temperature



## Weekly Mean Air Pressure

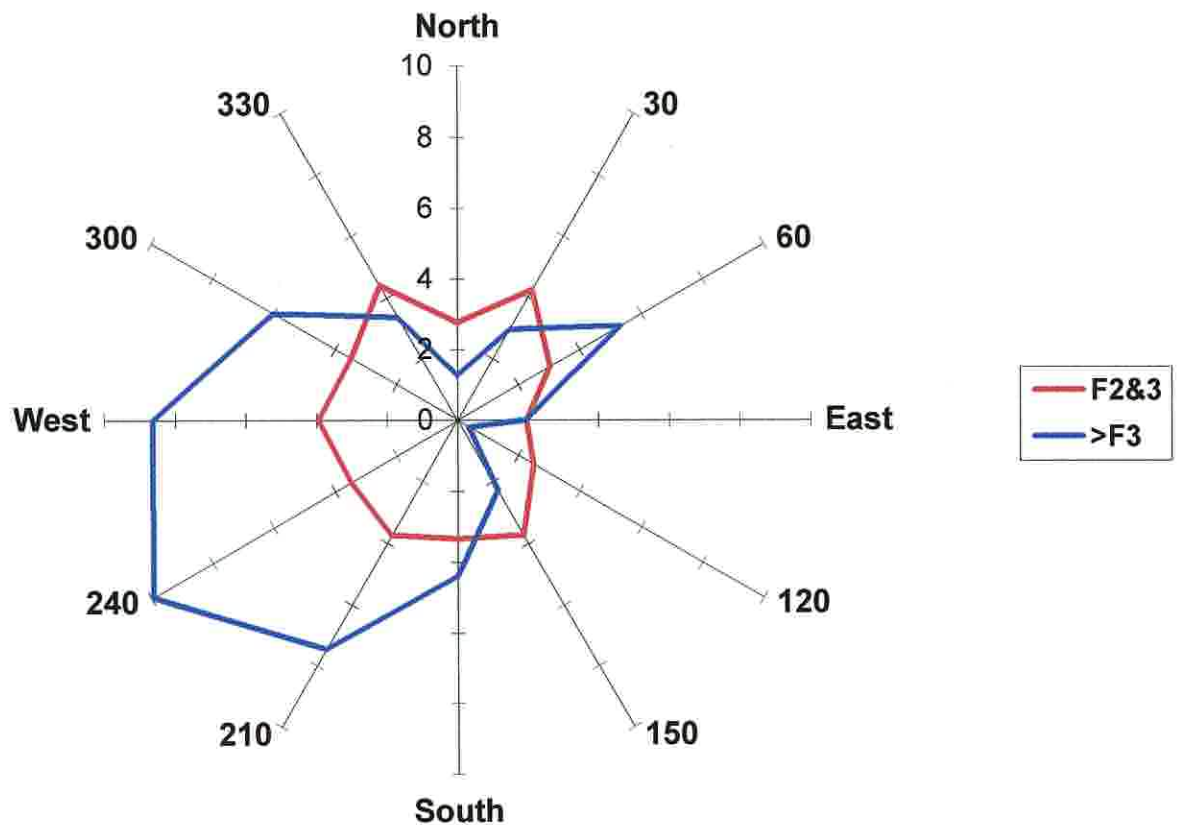




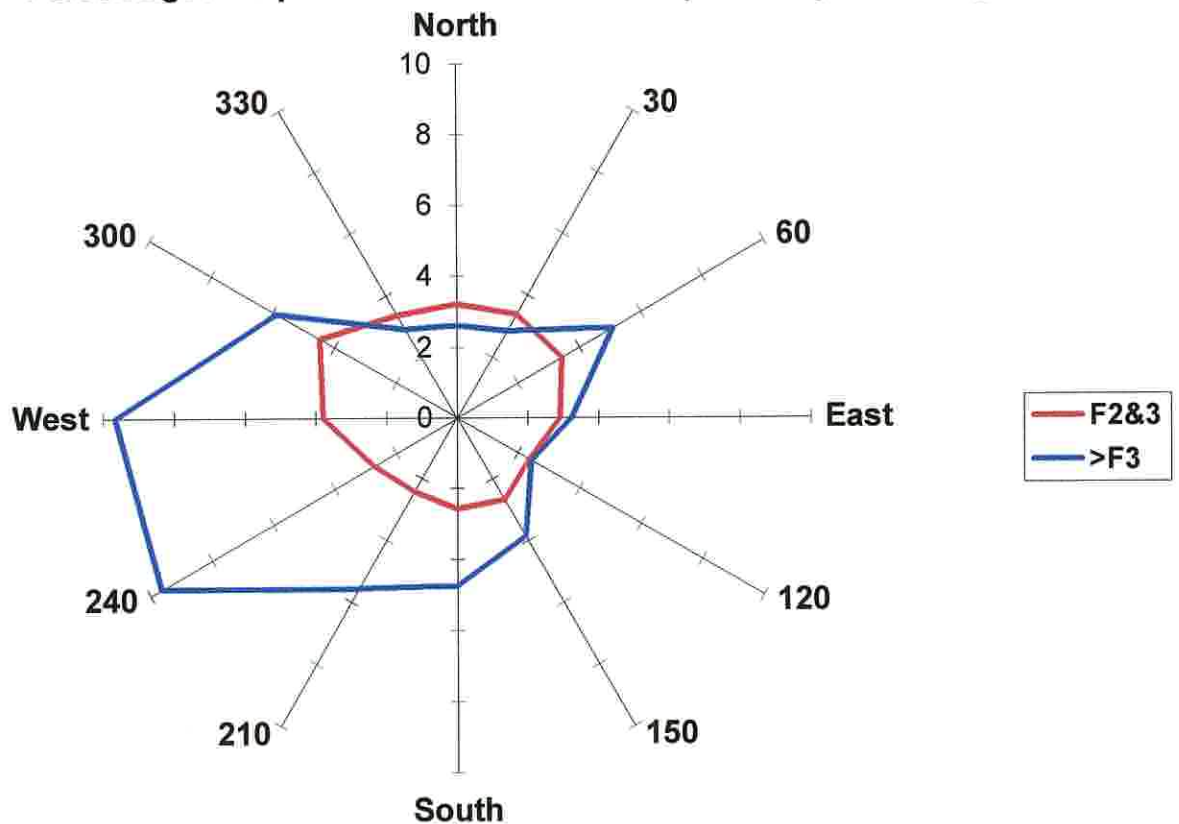
# Guernsey Airport Met. Office

Appendix III

Percentage frequencies of direction and speed-1999



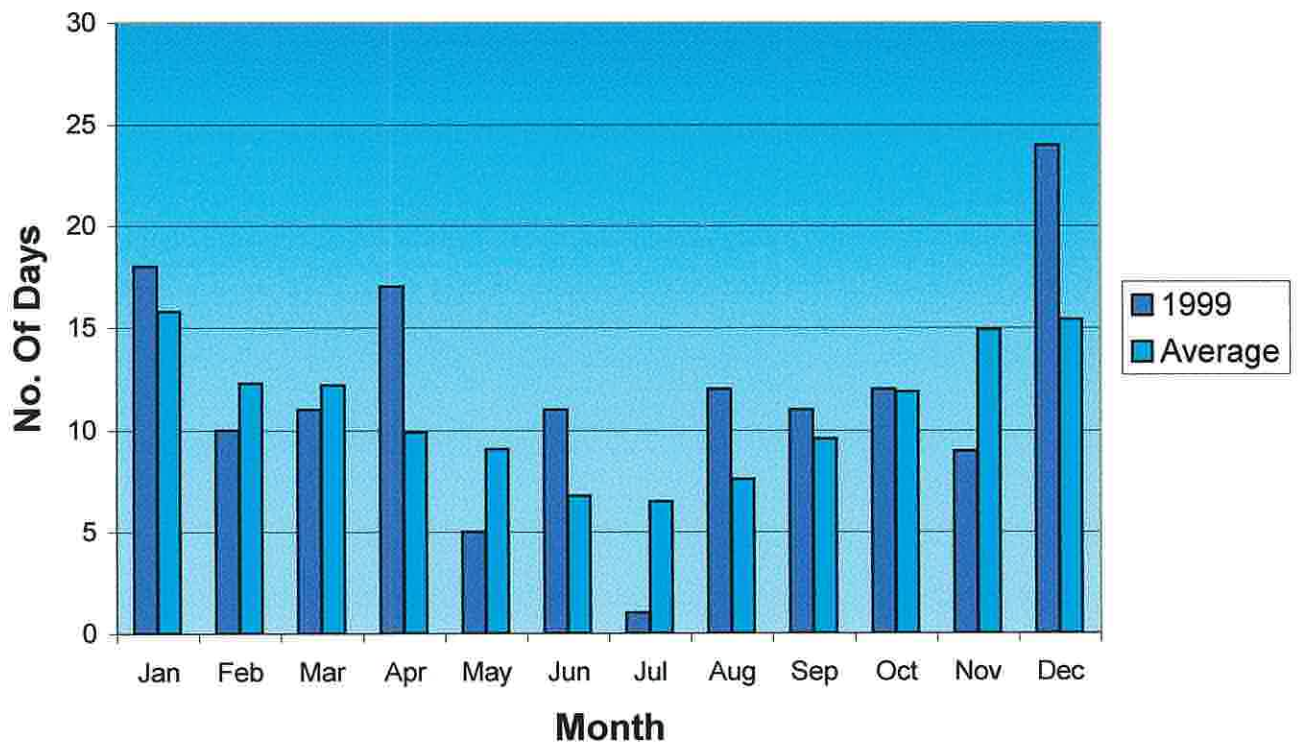
Percentages frequencies of direction and speed-30 year average



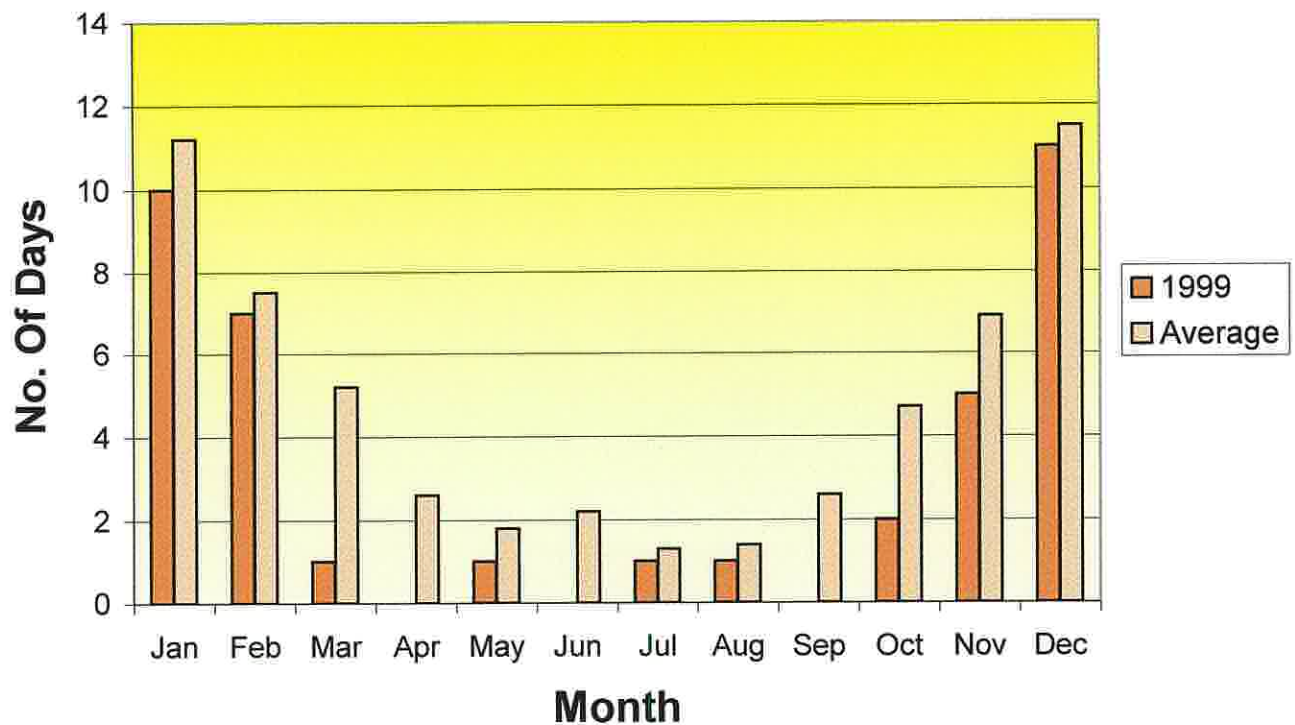
# Guernsey Airport Met. Office

Appendix IV

## Wet Days $\geq 1.0\text{mm}$



## Sunless Days

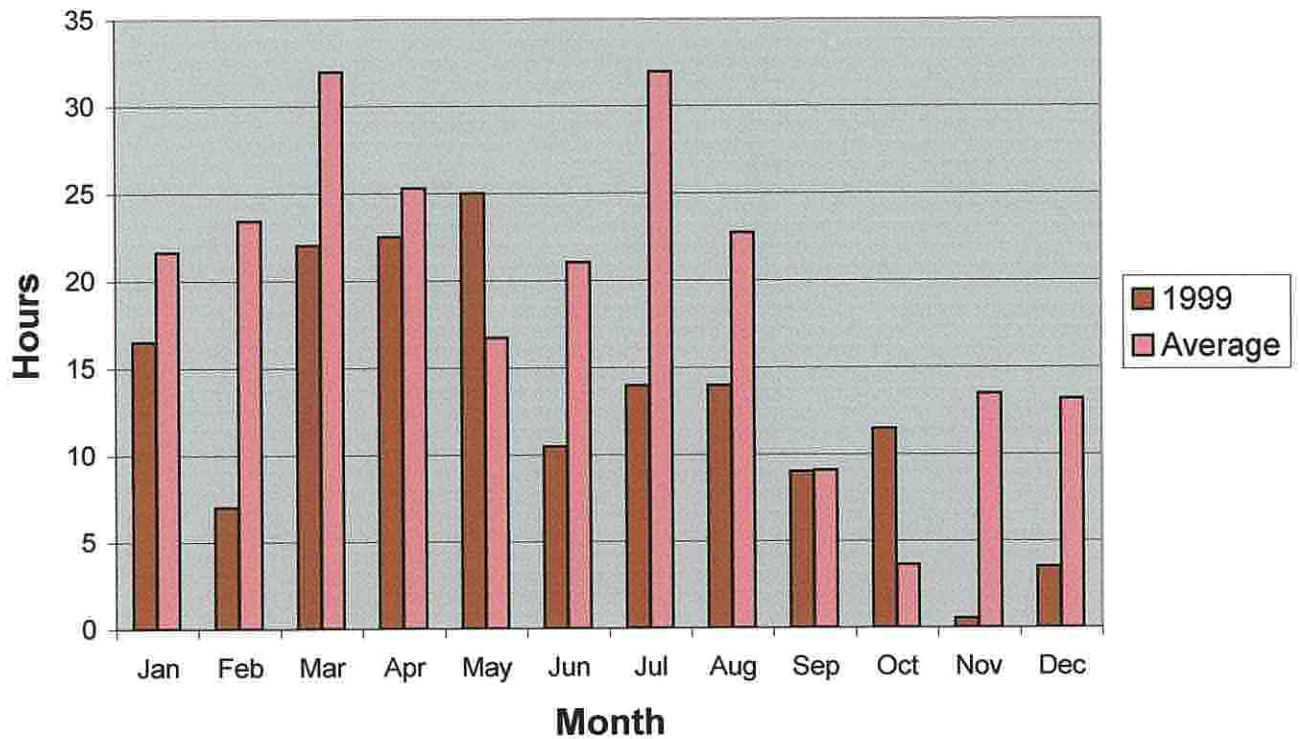




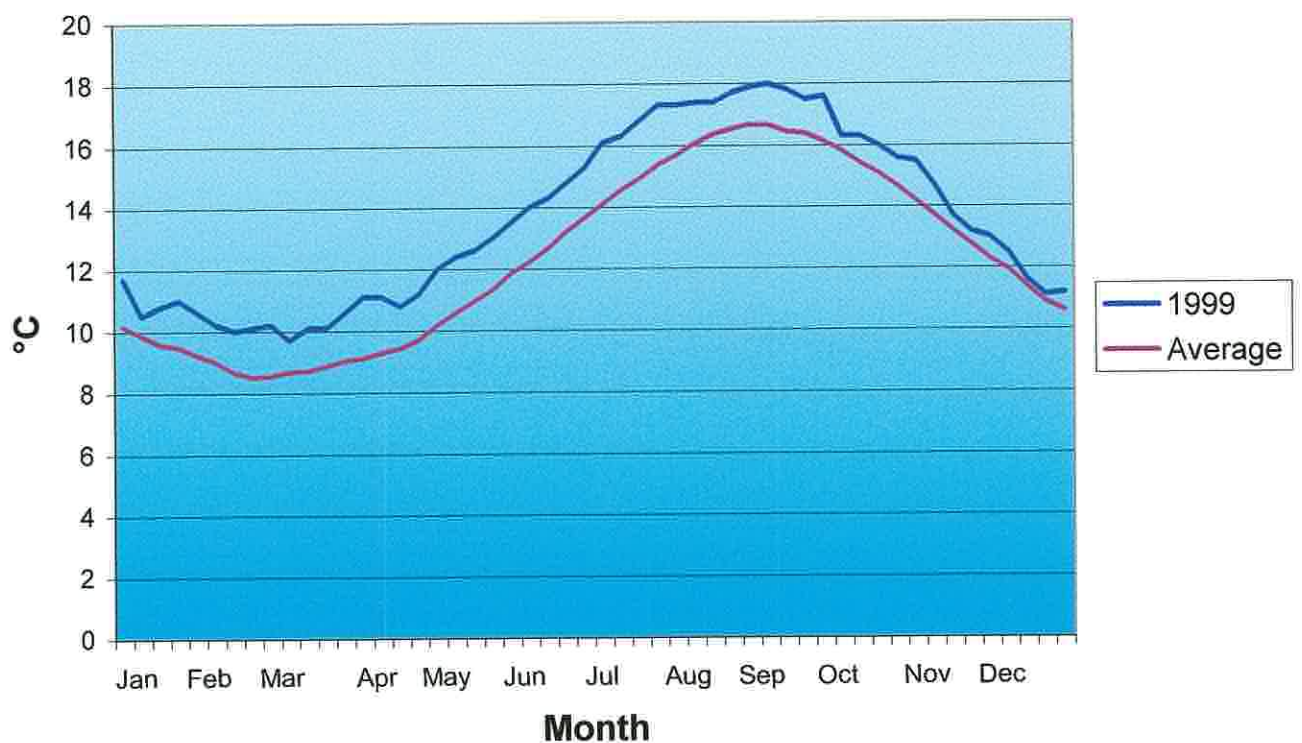
# Guernsey Airport Met. Office

Appendix V

## Monthly Hours of Fog



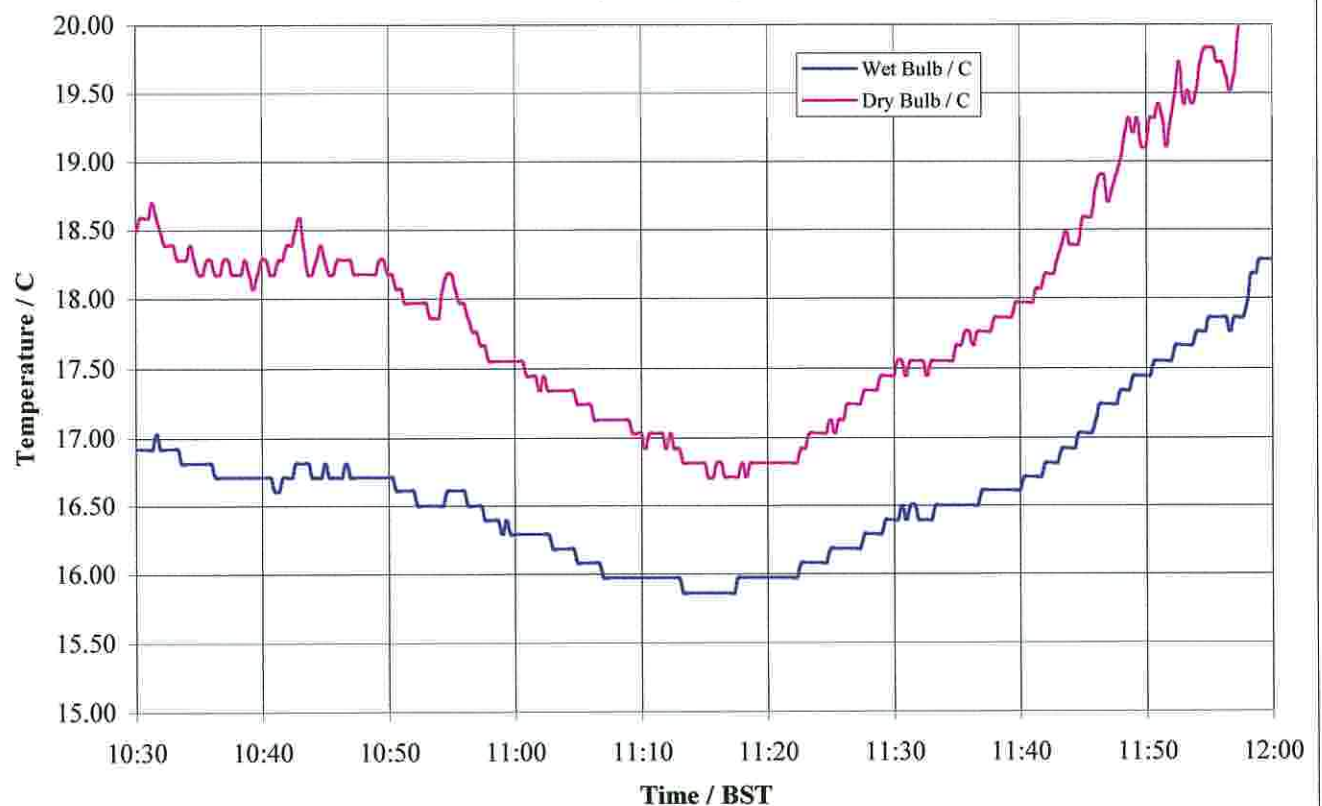
## Weekly Sea Water Surface temperatures



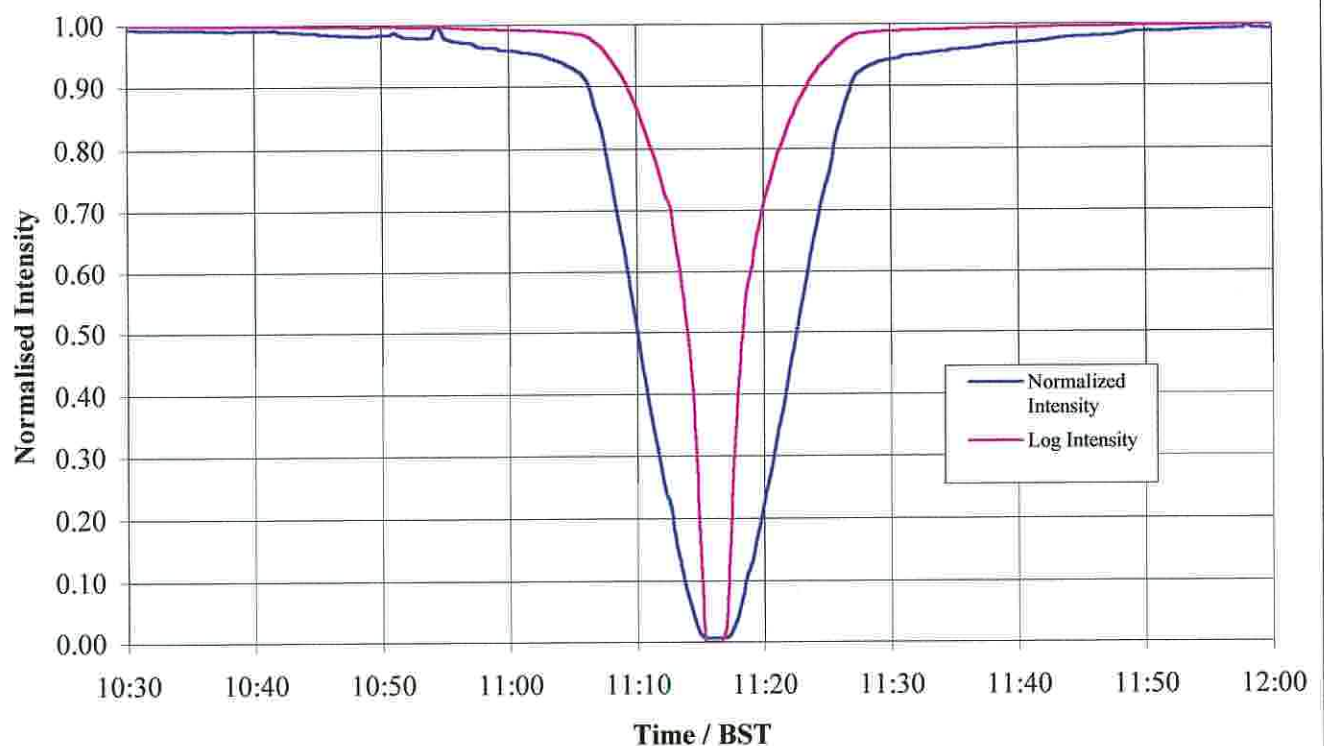
# Guernsey Airport Met. office

Appendix VI

**Total Eclipse on Alderney 11 August 1999  
Wet and Dry Bulb Temperature**



**Total Eclipse on Alderney 11 August 1999 - Light Intensity**





**Diary of astronomical events for 2000 - Bailiwick of Guernsey**

<b>January</b>	New Moon on the 06 <sup>th</sup>	Full Moon on the 21 <sup>st</sup>
NB. 21 <sup>st</sup> – Total Eclipse of the moon starts 03:04, ends 06:26. Totality 04:06 – 05:24.		
<b>February</b>	New Moon on the 05 <sup>th</sup>	Full Moon on the 19 <sup>th</sup>
10 <sup>th</sup> to 20 <sup>th</sup> – Mercury visible in evening sky		
<b>March</b>	New Moon on the 06 <sup>th</sup>	Full Moon on the 20 <sup>th</sup>
<b>April</b>	New Moon on the 04 <sup>th</sup>	Full Moon on the 18 <sup>th</sup>
An interesting triple conjunction appears in the first half of April, when the planets Jupiter, Saturn and Mars form a close group in the western evening sky, changing positions night by night. They are joined by the crescent Moon on the 6 <sup>th</sup> April.		
<b>May</b>	New Moon on the 04 <sup>th</sup>	Full Moon on the 18 <sup>th</sup>
<b>June</b>	New Moon on the 02 <sup>nd</sup>	Full Moon on the 16 <sup>th</sup>
Early in month – Mercury visible in evening sky		
<b>July</b>	New Moon on the 01 <sup>st</sup> and 31 <sup>st</sup>	Full Moon on the 16 <sup>th</sup>
<b>August</b>	New Moon on the 29 <sup>th</sup>	Full Moon on the 15 <sup>th</sup>
11 <sup>th</sup> and 12 <sup>th</sup> – Perseids meteor shower.		
<b>September</b>	New Moon on the 27 <sup>th</sup>	Full Moon on the 13 <sup>th</sup>
<b>October</b>	New Moon on the 27 <sup>th</sup>	Full Moon on the 13 <sup>th</sup>
<b>November</b>	New Moon on the 25 <sup>th</sup>	Full Moon on the 11 <sup>th</sup>
17 <sup>th</sup> – Leonids meteor shower. 10 <sup>th</sup> to 20 <sup>th</sup> – Mercury visible in early morning sky		
<b>December</b>	New Moon on the 25 <sup>th</sup>	Full Moon on the 11 <sup>th</sup>
13 <sup>th</sup> and 14 <sup>th</sup> – Geminids meteor shower.		

Venus disappears from the morning sky by March, reappearing in the evening in August, and shining as a brilliant evening “star” during the autumn.

Jupiter and Saturn are visible in the evening until April, in the morning from June to August, and then in the evening again for the rest of the year.

Venus and Mercury are also close together (2 degrees) on the 15<sup>th</sup> and 16<sup>th</sup> March, very low in the east before sunrise, and on the 21<sup>st</sup> June Venus and Mars approach within a third of a degree.

**Lihou Island - Causeway opening times**

**Summer 2000**

**All times BST**

NB. Times are approximate. Always exercise caution and check times with the notice board by the slipway.  
No responsibility can be accepted for any consequence arising out of the use of these tables

<u>May</u>	<u>Opens</u>	<u>Closes</u>	<u>June</u>	<u>Opens</u>	<u>Closes</u>	<u>July</u>	<u>Opens</u>	<u>Closes</u>	<u>August</u>	<u>Opens</u>	<u>Closes</u>	<u>Sept.</u>	<u>Opens</u>	<u>Closes</u>
1	10.30	12.56	1	10.59	14.20	1	11.24	14.48	1	12.47	16.07	1	13.52	17.33
2	10.51	14.01	2	11.36	15.14	2	12.09	15.44	2	13.31	17.12	2	14.42	17.59
3	11.19	14.59	3	12.17	16.03	3	12.57	16.35	3	14.18	17.51	3	15.36	18.13
4	11.56	15.42	4	13.07	16.48	4	13.46	17.22	4	15.13	18.24	4	16.48	18.08
5	12.38	16.24	5	14.01	17.29	5	14.40	18.03	5	16.13	18.45	5	Closed	
6	13.22	17.02	6	15.00	18.06	6	15.42	18.39	6	Closed		6	Closed	
7	14.11	17.38	7	16.09	18.38	7	16.57	19.01	7	Closed		7	Closed	
8	15.10	18.08	8	Closed		8	Closed		8	Closed		8	Closed	
9	16.31	18.28	9	Closed		9	Closed		9	Closed		9	Closed	
10	Closed		10	Closed		10	Closed		10	Closed		10	Closed	
11	Closed		11	Closed		11	Closed		11	Closed		11	Closed	
12	Closed		12	Closed		12	Closed		12	Closed		12	11.51	14.04
13	Closed		13	10.22	12.02	13	Closed		13	Closed		13	12.14	14.55
14	09.43	12.01	14	10.57	13.02	14	Closed		14	12.13	14.25	14	12.38	15.40
15	10.17	13.09	15	11.28	13.54	15	12.04	13.51	15	12.44	15.11	15	13.07	16.16
16	10.55	13.59	16	12.05	14.38	16	12.32	14.43	16	13.14	15.56	16	13.39	16.48
17	11.34	14.45	17	12.39	15.18	17	13.02	15.31	17	13.44	16.31	17	14.18	17.16
18	12.08	15.24	18	13.20	15.45	18	13.39	16.05	18	14.19	16.58	18	15.01	17.40
19	12.48	15.55	19	13.58	16.15	19	14.17	16.32	19	14.53	17.26	19	15.58	17.58
20	13.30	16.20	20	14.45	16.36	20	14.58	16.59	20	15.41	17.46	20	Closed	
21	14.13	16.40	21	Closed		21	15.39	17.18	21	16.37	18.06	21	Closed	
22	15.10	16.43	22	Closed		22	Closed		22	Closed		22	Closed	
23	Closed		23	Closed		23	Closed		23	Closed		23	Closed	
24	Closed		24	Closed		24	Closed		24	Closed		24	Closed	
25	Closed		25	Closed		25	Closed		25	Closed		25	10.43	12.41
26	Closed		26	Closed		26	Closed		26	Closed		26	11.03	14.02
27	Closed		27	Closed		27	Closed		27	10.40	13.01	27	11.34	14.59
28	Closed		28	Closed		28	10.01	11.46	28	11.16	14.17	28	12.10	15.46
29	Closed		29	10.02	12.27	29	10.38	13.20	29	11.48	15.20	29	12.47	16.28
30	09.55	11.58	30	10.39	13.45	30	11.17	14.30	30	12.28	16.10	30	13.30	17.01
31	10.18	13.17				31	12.03	15.33	31	13.12	16.54			



**2000 Official Guernsey Ormering tides**

		HW am	HW height	HW pm	HW height	LW am	LW height	LW pm	LW height
January	06 Thu	06:13	8.6	18:33	8.4	00:14	2.3	12:36	2.1
	07 Fri	06:50	8.7	19:10	8.5	00:49	2.1	13:12	1.9
	08 Sat	07:25	8.8	19:46	8.5	01:24	2.0	13:47	1.9
	21 Fri	06:26	9.4	18:56	9.3	00:28	1.3	13:00	0.9
	22 Sat	07:15	9.8	19:44	9.5	01:19	1.0	13:49	0.6
	23 Sun	08:01	9.9	20:28	9.5	02:06	0.8	14:34	0.6
February	05 Sat	06:34	8.6	18:56	8.5	00:32	2.1	12:56	1.8
	06 Sun	07:11	8.9	19:32	8.7	01:09	1.8	13:33	1.5
	07 Mon	07:46	9.0	20:06	8.8	01:45	1.6	14:08	1.4
	19 Sat	06:15	9.3	18:45	9.3	00:18	1.4	12:49	0.9
	20 Sun	07:02	9.7	19:29	9.6	01:07	0.9	13:35	0.5
	21 Mon	07:45	9.9	20:10	9.6	01:51	0.7	14:17	0.4
March	06 Mon	06:51	9.0	19:12	8.9	00:50	1.6	13:13	1.2
	07 Tue	07:27	9.3	19:46	9.1	01:27	1.3	13:49	1.0
	08 Wed	08:01	9.4	20:19	9.2	02:02	1.1	14:23	0.9
	20 Mon	06:43	9.6	19:08	9.5	00:48	1.0	13:14	0.6
	21 Tue	07:23	9.7	19:45	9.6	01:30	0.7	13:53	0.5
	22 Wed	08:00	9.7	20:20	9.4	02:07	0.7	14:28	0.7
April	04 Tue	06:23	9.0	18:45	9.1	00:23	1.5	12:46	1.1
	05 Wed	07:02	9.4	19:21	9.4	01:03	1.1	13:24	0.8
	06 Thu	07:39	9.6	19:57	9.5	01:41	0.8	14:01	0.7
	18 Tue	06:18	9.3	18:41	9.3	00:23	1.2	12:47	0.9
	19 Wed	06:57	9.4	19:17	9.4	01:03	1.0	13:24	0.9
	20 Thu	07:32	9.3	19:50	9.3	01:39	1.0	13:58	1.0

Times are given in GMT and heights are in meters above chart datum.

High pressure will depress tide levels whereas Low pressure will raise tide levels.

Onshore winds will raise local tide levels whereas offshore winds will depress local tide levels.