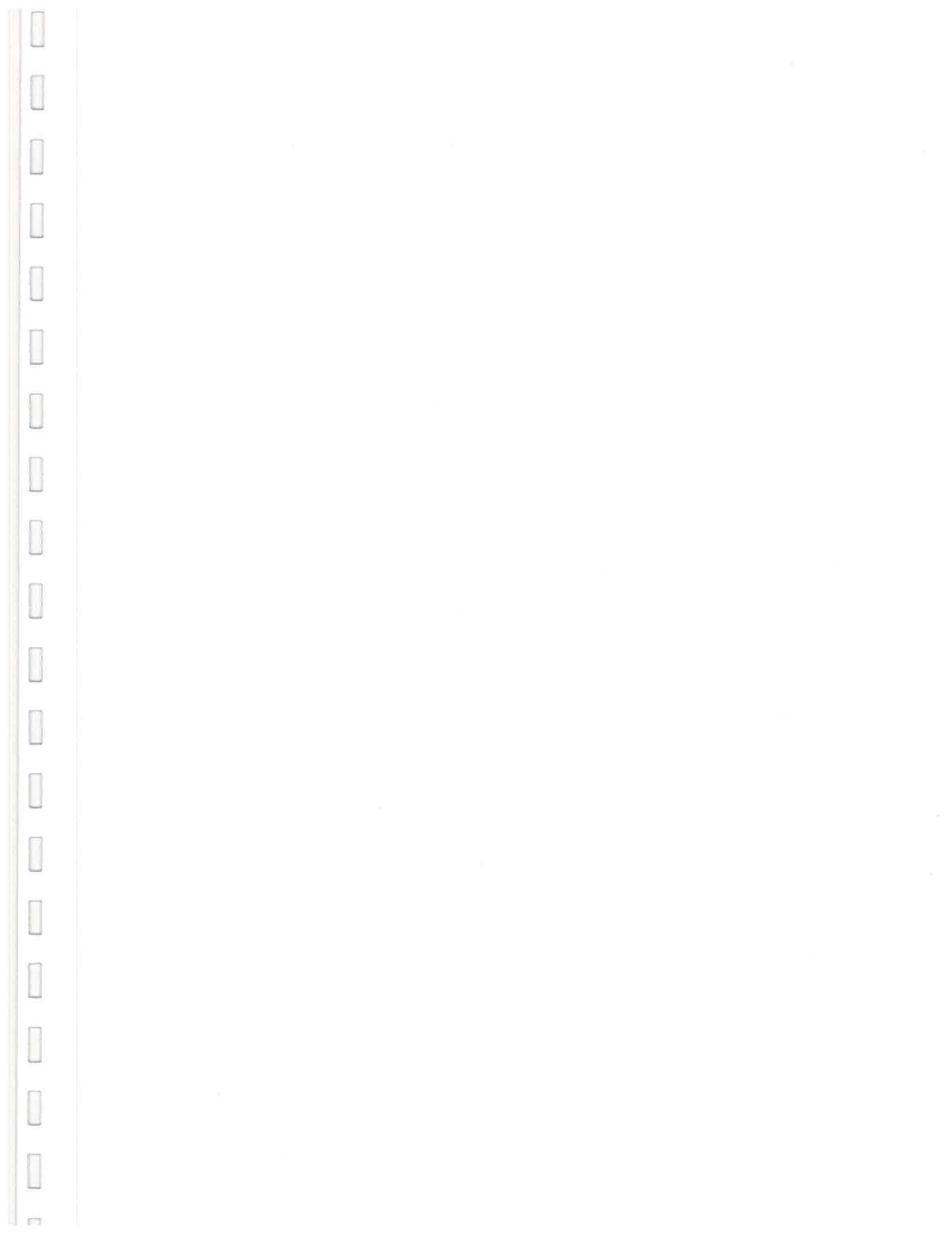


**Guernsey Airport
Meteorological Observatory
2001
ANNUAL WEATHER REPORT**





Guernsey Airport
Meteorological Observatory
Annual report
2001

Preface

Year after year the Guernsey Met. Office is privileged to witness and record all the many facets that contribute towards that changeable, sometimes unpredictable, but always fascinating element of our daily lives – the local weather. As I write this report, the first gales of 2002 are lashing the Islands in direct contrast to the quiet of previous months.

The variety and complexity of the many different weather types that we see on a day to day basis never ceases to amaze, but it is still surprising that records are broken even though we can look back over a century and a half of detailed written weather observations.

Much of 2001 will, of course, be remembered for some very pleasant spells of dry sunny weather with above average temperatures and generally light winds. Certainly that held true from May onwards with only August letting the side down a little. October was rather wet but the mean air temperature for the month was a new record at 15.2°C beating even the June figure of 14.9°.

Sunshine figures show how pleasant 2001 actually was towards the end of the year culminating in over twice the average hours being recorded in December – another new record! All this of course in stark contrast to the beginning of the year when record amounts of rainfall fell during the first four months. The photo's, written reports and graphs that follow illustrate this divide only too well.

2001 saw the departure from the Office of Senior Observer John Phillips who has retired after many years of dedicated service. We wish him well for the future and welcome his replacement Dan Guerin who, being the youngster in the Office, can look forward to many years observing and being witness, no doubt, to more weather records being broken.

Tim Lillington
Senior Meteorological Observer
January 2002

Guernsey Met. Office photo archive

Flooded pond at Saumarez Park – February 2001



A pleasant Talbot Valley sunset – November 2001



CONTENTS

COMMENTS ON THE WEATHER OF 2001	1
---------------------------------------	---

MONTHLY COMMENTS:

JANUARY/FEBRUARY	3
MARCH	4
APRIL/MAY	5
JUNE	6
JULY	7
AUGUST/SEPTEMBER	8
OCTOBER	9
NOVEMBER	10
DECEMBER	11

MONTHLY STATISTICS:

ANNUAL WEATHER SUMMARY	12
SUNSHINE/PRESSURE/RAINFALL	13
TEMPERATURE	14
NUMBER OF DAYS WITH	15
WIND SPEED	16
WIND SPEED, DIRECTION (PERCENTAGE FREQUENCIES)	17
FOG (visibility <1000m)	18
RUNWAY VISUAL RANGE (<600m)	19
REPORT FOR ROCQUAINE, L'ANCRESSE and SARK	20

DAILY OBSERVATIONS FOR 2001:

JANUARY	21
FEBRUARY	22
MARCH	23
APRIL	24
MAY	25
JUNE	26
JULY	27
AUGUST	28
SEPTEMBER	29
OCTOBER	30
NOVEMBER	31
DECEMBER	32

APPENDICES:

GRAPHS

Monthly Rainfall/Sunshine	I
Weekly Mean Air Temperature/Mean Air Pressure	II
Percentage Frequency of Wind Direction and Speed	III
Wet days/Sunless days	IV
Monthly Hours of Fog/Weekly Surface Sea Water Temperatures	V

SUPPLEMENTARY INFORMATION PAGES

Phases of the Moon and Summer Weekend Tides	VI
Diary of Astronomical Events	VII
Lihou Island Access Times	VIII
Ormering Tides	IX

METEOROLOGICAL OFFICE GUERNSEY AIRPORT

COMMENT ON THE WEATHER OF 2001

This turned out to be yet one more in the lengthening sequence of warm years, with the Island missing most of the cold weather that affected parts of the British Isles during the late winter and early spring. The mean temperature for the year was the eighth highest on record to make nine out of the twelve warmest years occurring since 1989. Only December ended up cooler than normal, but there was still some very mild weather during its first week. Following two record wet months out of the first three, the weather had to become drier. April, though, was another wet month and by its end we had already received more than two thirds of an average year's rainfall. Out of the next eight months only three had above average rainfall and even then any excess was not great. To end the year we managed the fourth driest December at the Airport. Most months during this year were sunnier than normal, only March, April and August recorded a deficit. The sunny and warm conditions were accompanied by quiet weather for much of the time, with a gale on just two days during the year. The highest gust recorded was 51 knots, lower than in any other year.

January maintained the wet conditions that had prevailed at the end of 2000, with the highest January rainfall recorded in Guernsey going as far back as 1843. Despite this we managed a dry and mainly sunny week during the middle of the month. This middle week was also rather cold, but overall temperatures were slightly above normal and there were no gales recorded. The generally mild conditions continued for much of February and it was dry for the most part from the 9th to the 25th. In this 17 day period there was just 4.4mm of rain. Exceptional rainfall just before this spell and a wet end to the month ensured that the total of rain measured was 50% above normal. Sunshine, though, was again higher than usual.

The winter as a whole was the wettest on record at the Airport and the third wettest in Guernsey's composite records. Despite all this rain, sunshine was the highest for three years and, more significantly, this was the fifth sunniest winter at the Airport. The trend for mild winters continued, but this was still the coolest for four years. The wet theme persisted throughout March, resulting in the wettest for at least the 160 years of weather recording in Guernsey. In contrast to the winter, sunshine was over 30 hrs below normal, making this the duller since 1994. In contrast to most of the British Isles this was a mild month, extending the sequence of mild Marches even further.

Despite being another wet month, April was the driest in four years. The previous three have had totals close to, or exceeding, 100mm, whereas this year just under 90mm was measured. As with March, sunshine was below normal, but with a slightly higher total than in 2000. The monthly mean temperature was near to the average, but there were no particularly warm days and the overall feel of the month was governed by the rain and lack of sun. The weather perked up considerably in May, being very dry and sunny, while temperatures were over 1°C above the long-term average. The last cold May occurred in 1996, which was one of the coldest on record. Due to the wet weather in March and April this was a very wet spring, falling short of the 2000 record by just 4mm. The sunny May, though, made up for most of the earlier dullness and this was another rather warm spring. In the last decade only the spring of 1996 was cold.

June experienced similar conditions to those of May, with low rainfall and a high total of sunshine. It was also warmer than usual and a very quiet month, with a mean wind speed of just 8.4kt. July turned out to be the warmest for six years, with sunshine above average. Following two dry months July was rather wet, although there was no rain in the last nine days. This was also a quiet month with no gusts above 20kt after the 20th. Fog, though, was more in evidence than during the preceding three months, being at its worst in the first 10 days. August was warm as well, but rather dull and wet, especially so in the first week. Winds were stronger than in either June or July, although the mean wind speed was only marginally above average. With three warm months the summer ended up as the warmest since 1995 and the sixth warmest on record. Sunshine was higher than normal and rainfall slightly lower than usual, but neither by very much.

September managed less than a third of the normal rainfall, despite, there being an average number of rain days. The total of rainfall measured was the fifth lowest on record. A much higher than usual incidence of north-west winds meant that the temperature fell back to being close to the average. In October the prevailing wind switched around to the south, this ensured that we managed the warmest October at the Airport. Spells of unsettled weather meant that this was a wet month, but there were a sufficient number of sunny days for us to record the sunniest October for four years. November resumed the predominantly dry conditions, which had begun in May. Along with the lack of rain this was a very sunny month, with the total exceeding 100 hrs for the fifth time within the last 14 years. Despite northerly winds being more common than usual, the mean temperature was above average. Overall the autumn was warmer, drier and sunnier than normal being the

To end with December broke the sunshine record by over 10 hrs. The third sunniest did not get within 25 hrs of this December's total. With the excess sunshine this was, not surprisingly, a very dry month; being the driest since 1991. Between the 6th and the 21st winds were blowing off the Continent, which resulted in rather cold conditions, but we escaped an air frost.

January

At the start of the month there was a deep low centred in mid-Atlantic, with a showery south to south-west flow covering most of Britain. This brought us very mild conditions, with a mixture of sunny spells and showers. The low moved slowly east to clear the British Isles by the 3rd, to be followed by a frontal system moving in rapidly from the south-west. This brought heavy rain on the afternoon of the 3rd, followed by the return of showery conditions. More fronts then raced in to bring more heavy rain for the night of the 4th.

From late on the 5th until the 9th we were covered by a showery airstream. This allowed a reasonable amount of sunshine, between the infrequent showers. It became cooler, though, as air was pulled in from polar regions. A transient ridge crossed the area on the evening of the 8th, causing the wind to drop to allow a brief ground frost. Cloud from the next set of fronts spread in on the 9th, with rain arriving by midnight. A ridge of high pressure, extending south-east from Iceland, ensured that the low passed just south of the area. The consequent east to north-east wind resulted in rather cold conditions. By the 11th an anticyclone had become established over Scotland, with low pressure near north-west Spain. This resulted in strong east to north-east winds blowing down the Channel. Due to the high over Scotland fronts moving north from Biscay became stuck over the Islands, with the result that we had nearly 24 hours of continuous rain. All this rain made the 11th, with a total of 35.8mm, the wettest January day on record.

The influence of high pressure edged south over the following 24 hours, so that by the 13th skies were clear. The next three days were dry, sunny and rather cold. The lowest temperatures being record on the morning of the 15th, when a slight air frost affected western parts of the Island. Low pressure then encroached from the south-west, bringing increased cloud, but it remained dry. For the following three days low pressure was held at bay over Biscay, allowing us a continuation of the dry conditions, with sunny periods and a light east to south-east wind.

The 20th was a pleasant mainly sunny day, following an early ground frost, but changes were soon to come. Fronts were already pushing in towards Brittany and cloud from them was visible by late afternoon. The cloud had thickened sufficiently by midnight to bring the first rain for a week. The rain soon became heavy and continued throughout the 21st, accompanied by persistent hill fog. By late in the day 38mm of rain had fallen, this did not constitute a new record as it fell outside the standard rainfall day. For the next couple of days fronts were never far away, leading to mainly cloudy conditions with rain at times. The clearance of a cold front late on the 23rd was followed by a strong showery airflow. For much of the 24th the showers missed us, to allow a mainly sunny day. Frequent showers came through on the 25th, accompanied by hail and the odd clap of thunder.

A new depression moved into Biscay on the 26th, then transferred north-east over western France. This brought us more heavy rain, followed by a return to showery weather. A weak ridge gave a reasonably sunny day on the 27th. Another low then edged into western Biscay, with rain from that system reaching us overnight. The low continued to move south-east, allowing another ridge to give mainly sunny conditions on the 29th. Due to the changeable nature of the weather pattern, the ridge soon moved away to be followed by a weakening set of fronts. These affected us on the 30th, before clearing away to allow a dry day on the 31st.

February

A ridge of high pressure, extending south-west from a large anticyclone over northern Scandinavia, allowed us dry conditions for much of the 1st. By the evening the ridge had begun to decline, allowing fronts to push in from the west. These brought outbreaks of rain, whilst introducing mild and moist air, resulting in some patches of hill fog. There were a few hours of sunshine around midday on the 2nd, the last significant sunshine for three days. For these three days the Islands were covered by a moist south-west airflow, with fronts bringing periods of rain, accompanied by hill fog patches. The south-west flow ensured that it was very mild by both day and night. This was in marked contrast to the snowy and very cold weather over Scotland.

By dawn on the 6th fronts had cleared through, allowing us much brighter conditions. Winds were still blowing from the south-west, so it remained very mild, if rather breezy. There was similar weather on the 7th, but by mid-afternoon cloud had increased ahead of a developing low, moving north-east into Brittany. Overnight we had continuous rain, resulting in 25.7mm(1.01in) of rain by 9 a.m. on the 8th. It stayed cloudy, but mainly dry, through daylight hours on the 8th, then in the evening more rain arrived from the west. Another wet night ensued, with 32.5mm(1.28in) of rain falling. Not surprisingly, with such a large amount of rain over two days, there was flooding of low lying areas and a high number of landslips. A transient ridge of high pressure then gave us a mainly sunny day, but with northerly winds temperatures were lower than previously.

Weak fronts moved north-east through the Bailiwick on the 10th, re-introducing mild air, but giving

during the afternoon of the 12th pressure rose rapidly as an intensifying anticyclone moved into Wales. This brought a change to dry and bright weather, but also cooler with slight ground frosts on several nights during the following week. Daytime temperatures, whilst falling from previous levels, remained generally above normal.

The centre of high pressure began to drift south-west on the 19th, allowing a very weak front to cross the area early on the 20th. This gave some light, but still measurable rain. It also introduced moister air and hence rather cloudy conditions. These rather cloudy, but mild, conditions continued for the 21st and 22nd. On the 23rd a weak cold front moved through from the north, followed by a change to colder weather. On the 24th scattered showers developed with some of sleet and snow. Further snow and hail showers in the early hours of the 25th gave a patchy covering especially over grass surfaces.

The cold conditions continued for the remainder of the month with the sleet showers merging to give some longer spells of precipitation on the 26th and 27th. The 28th continued cold with sleet or rain showers at times and a thunderstorm rounded off the month occurring at 2100hrs.

March

We were greeted by cold Arctic air at the start of the month. Despite being cold the first two days were bright, with sunny periods and only light sleet or hail showers. On the 3rd cloud pushed north from a complex area of low pressure over southern Biscay. Rain arrived by the evening, turning to sleet as it intensified then back to rain by the 4th. Cloud hung around for most of the day and with a north-east wind it remained cold. The next day was mainly sunny, after a frosty start with the temperature rising well during the day.

A marked change in the weather took place on the 6th, with a warm front crossing the area during the early hours. Despite only a couple of hours of sunshine, the temperature rose steadily through the morning. By the early afternoon the temperature peaked at 13°C, the highest for the year so far. During the evening there was some heavy rain, followed by mainly clear skies overnight. Sunny periods on the 7th allowed the temperature at L'Ancrese to climb to a very mild 16°C. The 8th was also very mild, aided by nearly 5hrs of sunshine, but the arrival of heavy showers during the afternoon was the start of a run of dull and wet days.

Fronts, moving in from the south-west, brought rain, drizzle and fog patches late on the 9th. A sequence of fronts crossing the area over the next couple of days resulted in periods of rain or drizzle, with hill fog causing problems for flying at times. A south-west flow ensured that temperature stayed above normal, especially so overnight. The passage of a cold front late on the 11th was followed by clear periods. The next couple of days were breezy with sunny periods and showers. Late on the 12th the showers became heavy and accompanied by hail.

With the continuation of the changeable weather pattern another set of fronts moved up the Channel on the 14th. This set of fronts kept it dull, with rain and drizzle during the afternoon, along with hill fog. Early on the 15th another warm front pushed through our area, before slowing down over southern England. This left us with very mild, but mainly cloudy conditions in contrast to the snow which affected places to the north of London. The next day was also very mild, but with some heavy rain and thunder during the evening.

Our weather continued to be dominated by low pressure, but with temperatures falling as winds began to back to the north-east. This also ensured that there was very little sunshine, with the longest period of clear skies occurring on the night of the 18th. By dawn on the 19th more cloud had already spread in, with rain eventually arriving that afternoon. Overnight the rain became heavy, persisting into the morning of the 20th. Much milder air was soon pushing in again from the south-west, introducing very moist conditions which resulted in persistent hill fog. Several hours of sunshine the following day helped to raise the temperature well above normal, but another small disturbance brought in more heavy rain late in the day. A similar sequence of weather occurred on the 22nd, with some sunshine around midday, then heavy rain and thick fog later on.

The 23rd was a mainly sunny day for a change, with just one shower late on. Cloudy conditions soon returned, though, the result of a low passing by to the south of the Islands. As this low moved away colder air was pulled in from the north, before milder conditions began to encroach once more from the south-west, on the 27th. The return of milder weather was marked by some heavy rain and mist. Despite the pressure remaining low, there were sunny periods on the 28th and 29th, although with heavy showers on the evening of the 28th. For something different a weak ridge of high pressure crossed the area on the 30th, allowing further sunny spells. A weak warm front then followed on overnight, giving a period of drizzle and fog. On the 31st south to south-west winds gave the warmest weather of the month, with the temperature at L'Ancrese getting up to 17.5°C, which is nearly 4°C warmer than at the Airport.

April

At the start of the month a weak warm front was moving north over southern England, leaving the Islands in a rather warm southerly flow. We managed a mainly sunny day, with the temperature climbing steadily through the day. The approach of a cold front on the morning of the 2nd brought increased cloud, with rain arriving during the afternoon and then some heavy rain that evening. Following the passage of the front, conditions brightened on the 3rd, but with more rain coming along by the evening. Once this rain had cleared away we were in a breezy and showery, but cooler, westerly flow. There was, at least, a reasonable amount of sunshine following the showers.

Rather windy conditions continued for the next week, with a series of frontal systems crossing the British Isles. These brought generally cloudy weather, with spells of rain and fog over higher ground at times. There was some brighter showery weather for a while on the 7th and 8th. Due to the extensive cloud night-time temperatures were on the whole well above normal, whereas daytime values were held down.

On the 10th a low moved east across southern Scotland, with a ridge of high pressure developing in its wake. This pulled in a mainly sunny northerly flow, but despite the wind direction temperatures remained near normal. Leading in to the Easter weekend the pressure stayed high, however, this situation failed to prevent weak fronts from pushing in from the west. This pattern resulted in mainly cloudy weather, with some light rain or drizzle at times. By Easter Sunday the centre of the High had retreated to the Atlantic, allowing a new set of fronts to sweep south-east through Britain. Behind the cold front the cloud broke up to give us mainly sunny conditions on Easter Monday.

Tuesday the 17th was also sunny for the most part, and mild. That night, weak fronts moved through from the north, followed by an Arctic airflow. We remained in this Arctic air for another four days, resulting in our coolest weather of the month. Each day, though, saw plenty of sunshine with only light showers coming through in the evening or overnight. From the 16th to the 21st we managed to get 62.4 hours of sunshine, to make up most of the deficit from earlier in the month.

By the 21st the weather pattern near to the British Isles was changing, with the run of northerly winds being cut off as fronts began to push into western Ireland. The weakening fronts passed through the Bailiwick very slowly on the 22nd, resulting in a cool and damp day. Overnight the sky cleared, with unbroken sunshine following until the evening of the 23rd. The combination of south-west winds and sunshine helped to raise the temperature to its highest since the first couple of days of the month. By the 24th cloud from the next system had reached us, with rain arriving quickly. The rain and cloud had cleared by the afternoon to leave us with unbroken sunshine for the rest of the day.

Showery conditions predominated on the 25th, with heavy showers coming through that evening and overnight. The showers during the day were accompanied by gusty winds, but also with some reasonably warm sunny spells between the showers. After a sunny to the next day, more rain came in from the west; the rain persisting into the 27th. Despite the spells of rain over these three days temperatures were above normal. The next set of fronts were soon on their way in, bringing further rain, followed by a bright day. The last couple of days were cooler with more frequent showers.

May

Cool, wet and windy conditions greeted us on the 1st, due to a low positioned at the mouth of Loire and a ridge of high pressure lying across central Britain. Fronts responsible for the rain cleared away westwards by the end of the day, but this still left us in a cool and cloudy north-east airflow. As the low moved away and the ridge over Britain declined, the wind backed to the north, otherwise there was little change in the weather. Following the clearance of a weak front, the 4th and 5th had mainly sunny conditions, but it remained rather cool.

Pressure then began to build again across Scotland, with low pressure persisting over southern Europe, resulting in the winds veering to the north-east once more. Cloud spread south-west in this flow, from the North Sea, giving a few spots of rain and maintaining the low temperatures. Minor changes in the airflow helped to clear away the cloud on the afternoon of the 7th, to be followed by unbroken sunshine on the 8th. Even so the temperature failed to pick up, with the air passing a long way over the comparatively cold waters of the Channel. Cloud came in again around dawn on Liberation Day and with a moderate to fresh breeze, conditions were rather unpleasant for the holiday.

Winds decreased on the 10th and due to a more direct flow off France, temperatures picked up considerably. Sunshine was still limited and we had some showery rain during the afternoon. The next day was

easterly breeze sprang up. The maximum temperature for the day, of 23.8°C, was the highest in May since 1995. On the sheltered west coast it was a couple of degrees warmer yet. This burst of heat was brief, with a cold front pushing in from Biscay overnight to introduce much fresher weather. A depression was then centred over western Biscay for a couple of days, with well broken cloudy for most of the time from midday on the 13th until the afternoon of the 15th. Whilst temperature had fallen, they remained above normal at this time.

Showers spread in by the evening of the 15th, to give our first significant rain since the 1st. These showers had cleared through by the following morning, with the sun coming out again by the afternoon. A complex area of low pressure moved slowly east on the night of the 16th and during the 17th. We received a spell of heavy showers overnight, followed by bright and breezy conditions on the 17th. Just across the Channel southern England experienced some unseasonably cold conditions, with midday temperatures of only around 8°C. As the low moved into the North Sea there was a strong rise of pressure as ridge came in from the west.

From early on the 18th until late on the 19th an anticyclone edged slowly north-east to cover the British Isles. This resulted in the continuation of sunny weather, with the temperature creeping back towards normal. Light winds and sunshine produced a pleasant day on the 20th, but a tightening of the pressure gradient across the Channel brought fresh to strong winds on the next two days. The sun still shone, although the temperature was held down by the wind, which accentuated the cooler conditions. A lessening of the wind on the 23rd and 24th, resulted in higher temperatures once more.

In the early hours of the 25th low cloud was brought westwards down the Channel, bringing fog patches to Alderney for a while, whereas the rest of the Bailiwick stayed in the clear. A change of wind direction to the west overnight pulled in much moister air generally, which produced more widespread fog. With little sunshine and the fog around for most of the following morning the temperature fell back again. Fog was not a problem the next day, but it was mainly cloudy until the afternoon, then the sun came out to boost the temperature.

Bank Holiday Monday was plagued by fog on windward coasts throughout the morning, but with the north and east of the Island becoming mainly sunny. During the afternoon the fog dispersed to give pleasantly warm conditions, before returning that evening, becoming thick enough overnight to give some drizzle. The fog soon cleared inland on the 29th, but continued to affect most coasts until lunchtime. Sea fog was again troublesome for a while on the 30th, but it was sunny for the most part. To end the month we had more sunshine, but this time the wind picked up making it somewhat cooler.

June

A ridge of high pressure, extending eastwards from a large anticyclone over the central Atlantic, gave us a dry start to the month, with sunny periods and temperatures marginally above normal. The ridge then edged south to allow fronts to cross the British Isles. By the time the fronts reached the Channel they were very weak, giving only a few spots of rain as they passed through. Once they had cleared through the sun came out again, but with a fresh breeze blowing. High pressure then reasserted its influence, resulting in two sunny days, although the 3rd was on the cool side.

By the 5th the pressure had fallen as a small low moved into the mouth of the Channel, bringing increased cloud and showers towards the evening. By midnight fog had spread in and this lingered for a while the next morning. The approach of a cold front, brought strengthening winds and thicker cloud, but with rain holding off until early on the 7th. This turned out to be the coolest day of the month with the sun making the briefest of appearances during the afternoon. The cloud sheet cleared finally the following morning to allow the sun out once more.

From the 8th to the 11th pressure was high over the Atlantic, with Britain in a rather cool north-west flow. Frontal systems crossed northern areas at times, but they had little impact on our weather. We managed to have plenty of sunshine with light winds, but also some chilly nights. The main area of high pressure had transferred to Europe by the 12th with low pressure edging in to south-west Ireland. This change of weather pattern brought slightly warmer conditions. However, it also brought larger amounts of cloud.

A gradual fall of pressure was the sign that a spell of unsettled weather was on the way. Following a mainly sunny day on the 13th, cloud had already begun to thicken by dawn on the 14th. Rain arrived by midday, becoming heavy for a while during the afternoon, before clearing away during the evening. Over the next few days a depression moved slowly east-north-east across southern England, giving us a mixture of sunny spells and showery on the 15th. Heavy showers continued to affect England and northern France the next day, whereas the cloud broke over the Channel to allow a sunny afternoon. By the 17th pressure was rising again as a new anticyclone pushed in from the Atlantic.

High pressure dominated the weather from the 18th to the 25th, keeping any fronts well away from the Bailiwick. The resultant sunny conditions brought higher temperatures, although, nothing out of the ordinary. This was due to winds blowing mainly from the west or north-west, drawing in air off the comparatively cold waters of the English Channel. On the 25th the wind swung around to the north-east, causing the temperature to rise considerably from previous values, except for the north-east of the Island. L'Ancrese could reach only 21°C, compared to 27.4°C at the Airport and 28.2°C just inland from Fort Grey. After a very warm night, the wind swung around to the west the following morning, with fog replacing the previous hot sunshine.

High pressure became less dominant for the rest of the month, but due to a south-west airflow temperatures remained above normal. The 27th was mainly sunny after some early drizzle. A minor frontal system moved up the Channel on the 28th, to give us a cloudy day, with spells of showery rain or drizzle. This cleared away overnight to allow clear skies for a while, before more cloud spread in by dawn on the 29th. A few sunny spells during the afternoon made it a rather warm day. The passage of a cold front brought a burst of rain early on the 30th, followed by clearing skies resulting in sunny weather to end the month.

July

On the 1st pressure was rising as an anticyclone moved north-east towards the Channel. A moist westerly flow, though, gave us a cloudy day with some drizzle in the early afternoon. By the 2nd winds were in the east, resulting warm and mainly sunny conditions after the clearance of some early cloud. The anticyclone continued to move north-east, with the pressure falling as fronts pushed into Biscay. Ahead of these fronts it became hot, but by the evening cloud had increased. A developing thunderstorm passed by to the west of the Island, giving several hours of lightning and fairly distant thunder, but with little rain. Much of the next morning was cloudy with mist and hill fog, followed by a brighter afternoon. Overnight rain lead into a dull day on the 5th, with thick fog at times.

A complex area of low pressure persisted over the near continent on the 6th. After more fog the sun came out in the afternoon, before cloud and mist returned for the evening. Over the next couple of days the area of low pressure transferred to the North Sea, with breezy conditions spreading to the Channel. Despite a large amount of cloud most of the time there was little rain and temperatures remained just above normal.

By the 9th the British Isles were surrounded by low pressure. The old low was weakening and clearing away into Scandinavia, while a new low was deepening and heading in towards Scotland. Fronts from this latter system crossed the Islands bringing cloudy weather, but with not much rain. This depression dominated the British weather for several days, bringing frequent showers or more prolonged periods of rain to many areas. Showers were infrequent here and it became sunnier, but windy for a while. As winds eased off on the 13th, a number of funnel clouds were seen that morning. This is an unusual occurrence for July.

A weak ridge of high pressure started to edge in from the west on the 14th. It maintained its influence until late on the 16th, ensuring mainly sunny conditions with light winds. Temperatures, though, were below average, dipping below 10°C at the Airport early on the 15th. Cloud from the next depression arrived on the evening of the 16th, bringing rain later. The 17th was wet from the early hours, with some bursts of heavy rain accompanied by a fresh south-east wind. By that evening a complex area of low pressure covered the Channel and southern England. As the low centre crossed the Island around dawn on the 18th pressure fell to 990.1mb, the lowest reading in July since 1988. Despite such low pressure rainfall here was much less overnight than in Jersey or across England. Much of the day was sunny with a light to moderate breeze.

A fresh north-west breeze affected us on the 19th, however, this turned out to be the sunniest day of the month, with the temperature not far from normal. Fronts from the next Atlantic depression spread in on the evening of the 20th, resulting in a wet night, with mist and hill fog. Weak fronts remained close by for the following couple of days, keeping the weather rather cloudy with some light rain or drizzle. By the 23rd a ridge of high pressure had extended to wards the Channel, bringing a return of sunny weather, but light north to north-west winds held temperatures down for the next two days.

The 25th saw the daytime temperature climb above 20°C for the first time since the 6th. It became even warmer over following days, with maximum temperatures exceeding 25°C for four days in a row, peaking at 28.9°C on the 29th to make this the warmest July day since 1996. A ridge of high pressure was maintained across the area for the last couple of days of the month, to extend the sunny and dry period of weather. Due to a change of wind direction, though, the temperature fell back, whilst staying above average.

August

The remnants of July's late hot spell continued on the 1st, with the temperature reaching 26°C on the west of the Island. A thundery depression then pushed northwards from Spain, bringing us some thundery rain early on the 2nd. Towards midday a torrential downpour moved north over the Island, accompanied by thunder and lightning, bringing a short spell of flooding to some places. By the 3rd the thundery low had moved on to the North Sea, leaving us in a cooler, but still mainly cloudy westerly flow. For much of the following six days the weather was unsettled, with low pressure initially centred to the north of Britain and a showery airstream covering most of the British Isles. By the evening of the 5th a warm front had pushed into south-west England, bringing drizzle and fog to the Islands. These rather gloomy conditions persisted for the next couple of days, with daytime temperatures held down due to a lack of sunshine.

The 8th saw a return to showery conditions, on the southern flank of a depression just clearing the east coast of England. This was a much brighter day previous ones, but it was breezy with the temperature below normal. A passing trough gave some heavy showers early on the 9th, before the sun came out again. Despite the sunshine this was the coolest day of the month, with a fresh to strong breeze accentuating the coolness. A developing anticyclone then edged in from the Atlantic to give us a day of unbroken sunshine on the 10th, with the wind easing off. Despite the close proximity of high pressure the morning of the 11th was rather cloudy.

Over the following couple of days fronts crossed the British Isles, but with high pressure remaining nearby we had little significant weather. Some drizzle and hill fog was recorded on the evening of the 12th. Towards evening on the 13th the wind fell light, before swinging around to the east in the early hours of the 14th. This change of wind direction brought in much warmer air from France, leading to our highest temperature for the month of 26.0°C. Low pressure then moved north from Biscay to bring more cloud and lower temperatures the next day. The passage of a cold front early on the 16th was followed by a sunny, but much cooler day.

A new depression moved slowly north-east towards the mouth of the Channel on the 17th, pushing fronts ahead of it. These brought rain in early on the 18th, with heavy rain falling in the late morning. Clearer air spread in later in the afternoon to give us a pleasantly warm evening. The 19th was a cooler and rather breezy day, without much sunshine, although it was mainly dry. A ridge of high pressure extended north-east across the area over the next two days, bringing back mainly sunny conditions. The ridge declined for a while as fronts crossed Britain, before building again and weakening the fronts as they approached us. The weather warmed up despite rather large amounts of cloud, with sea fog developing on the 23rd. The fog came inland during the evening of the 23rd and stayed around the next day. Away from the coast there were several hours of warm sunshine on the 24th, before the fog rolled back in. An easterly wind pushed the fog away again the following morning, however, the wind veered around to the west allowing the fog in once more that afternoon.

Thundery low pressure pushed north from France on the 26th, making this a cloudy day. In the late morning a line of thunderstorms passed up our east coast, accompanied by some heavy rain, although the most intense elements stayed out over the sea. The passage of a cold front cleared the air at about dawn on the 27th, to allow us a mainly sunny Bank Holiday. High pressure maintained its influence the following day, but then declined as thundery low pressure over France encroached once more. On the 30th fronts swung in from the Atlantic, bringing a change to fresher weather, although temperatures were not far from the late August average. These last couple of days of the month were mainly cloudy, but with little rain.

September

On the 1st an anticyclone was centred to the west of Biscay, with a ridge of high pressure affecting the British Isles. During the day this ridge declined as fronts crossed Ireland. This situation gave us a reasonably warm and sunny start to the month, but cloud soon increased the next day bringing outbreaks of light rain. The clearance of fronts early on the 3rd was followed by a bright north-west airflow. For the next six days an anticyclone remained almost stationary of the central Atlantic. Initially a ridge extended north to Iceland, with low pressure over southern Scandinavia. This pattern maintained the north-west flow which meant sunny periods for us and only a few showers, with temperatures close to normal. As the ridge to Iceland collapsed Atlantic fronts began to push into western Britain. This led to more cloud, but only a small amount of precipitation due to the proximity of high pressure.

By the 8th pressure had built over Iceland with a potentially showery north-west to northerly flow spreading south across the United Kingdom. Whilst some parts of the United Kingdom had frequent showers, we received just a few light ones interspersed with lengthy sunny periods. Due to the direction of the wind temperatures decreased a little. Over the following two days the high edged towards Ireland, with a deep low becoming slow moving over the southern Baltic. Any changes to our weather were slight, with lighter winds

Having edged close to Ireland the high began to decline and sink south, while the Baltic low filled. These changes allowed frontal systems to encroach into the British Isles. Once again the influence of these fronts on our weather was small with an increase of cloud marked by warmer nights. The passage of a cold front early on the 13th, was followed by a build of pressure over the central Atlantic, whilst a filling low moved south-east through Britain. Despite lower pressure only a small amount of rain fell here, while a return to north-west winds brought somewhat lower temperatures.

From the 14th to the 16th the weather pattern stayed similar with high pressure in mid-Atlantic keeping us dry and mainly sunny. On the 17th the high moved closer to Britain, at the same time extending a ridge towards northern Scandinavia. The subsequent change of airflow brought a low south-west towards south-east England. Cloud from this system had reached us by the 18th, bringing the first sunless day of the month. This day also saw the lowest daytime temperature of the month, with 16°C not reached for the first time since early June. Pressure remained low near to south-east England for another couple of days to ensure mainly cloudy weather, but we escaped the wet weather that affected East Anglia and the London area.

Sunshine returned on the afternoon of the 20th, to boost the temperature a little and winds fell light due to a slackening of the pressure gradient. The combination of light winds and clear periods overnight brought a run of rather cool nights, although daytime temperatures perked up. A strengthening north-east wind made the 23rd rather cool with cloudy conditions accentuating this drop in temperature. The 24th saw a complex pressure distribution over the British Isles. Pressure was high to the north of Scotland and low over the mid-Atlantic and the Alps. Fronts were moving westwards across Scotland and encroaching, from the south-west, into Ireland. This marked the beginning of a change from the pattern that had been dominant.

By the 26th winds were in the south-west for the first time in September. The passage of a warm front, at around dawn, was marked by a spell of moderate rain. Behind the front the air became noticeably more humid with cloud breaks during the afternoon allowing some pleasantly warm sunshine. For the 27th and 28th a southerly airflow covered the area, bringing the warmest conditions of the month, with temperatures 2 to 3 degrees above normal. There was some thundery rain on the evening of the 28th, before a cold front passed through to clear things up. The 29th was a mainly sunny day with light winds and the temperature only a degree lower than on the preceding two days. The 30th saw the deepest low of the autumn so far over the Atlantic with fronts sweeping north-east across the British Isles. These fronts made this the second sunless day of the month, but the amount of rain was not very great. Winds increased during the evening, although not up to gale force as had been threatened.

October

A deep depression was centred over the Atlantic at the start of the month. An associated frontal system had cleared through overnight, but remained close by through the day to keep the weather cloudy. A small wave depression passed to the west of the Island during the early hours of the 2nd bringing several hours of moderate or heavy rain. Once the rain had cleared it stayed mainly cloudy, but with temperatures above normal. The 3rd was a much brighter day with sunny periods and just a couple of light showers during the early afternoon.

A transient ridge crossed the area on the 4th, but cloud from the next weather system soon spread in to give some rain that evening. By the 5th a deep low had become slow moving in the central Atlantic, with its fronts giving western Britain a soaking. A relatively small amount of rain fell here as the fronts cleared through to allow sunny periods the following day. Throughout this early part of the month temperatures were above normal, especially so at night, due to the rather breezy and fairly cloudy conditions.

A new low swept in from the south-west on the 7th, deepening considerably as it approached Cornwall. Outbreaks of heavy rain came along by midday, with some bursts of torrential rain during the afternoon. All this rain was accompanied by strong to gale force winds and there was a report of possible tornado damage. The pressure remained low on the 8th, with strong winds and showery weather being maintained. Subsequently pressure rose as a ridge extended into the Bay of Biscay. This brought dry and mainly sunny weather, but with lower night-time temperatures than previously.

By the 12th the main centre of high pressure was over southern Germany, with a south to south-east flow affecting the Channel. This brought in some unusually warm air, with a maximum temperature of 20.7°C on the 13th, following a night when the temperature fell no lower than 16.5°C. Drizzle and fog patches then spread in from the south-west on the 14th, with the temperature much lower than on the preceding two days. A series of troughs and fronts passed across the area from the evening of the 14th until early afternoon on the 15th, giving spells of rain and drizzle before turning showery with some sunshine. Pressure then rose through the next 24 hours, killing off any showers and allowing us reasonably sunny weather on the 16th.

Low pressure soon became dominant once more, with a deep depression moving in towards Biscay, before edging north to become a slow moving feature centred to the west of Ireland. This depression stayed in place for a day or so, subsequently drifting south again and filling slowly. The result on our weather was to maintain a south or south-east airflow, with fronts crossing the Islands from time to time, producing periods of rain, but also with spells of warm sunshine. By the 21st there was a very complex pressure pattern over the British Isles and eastern Atlantic, with several low centres around and a slow moving front giving parts of eastern England a soaking. Our turn came the following day when a set of fronts moved north from Biscay, to keep us wet for much of the 22nd.

The weather remained generally unsettled for another four days, but with occasional incursions of high pressure we had a couple of fairly sunny days and not too much rain. Winds were now blowing from the south-west which kept temperatures well above normal. By the 27th a ridge of high pressure was developing over western France, with a new low becoming slow moving off Iberia. A weak front moved north across the Channel, before slowing down over southern England. Clear air then followed in, but it was rather moist. With clear skies this allowed fog to form early on the 28th, but this soon burnt off during the morning to leave us with a very pleasant autumn day. Conditions were similar the next day before some unusually warm air for late October swept north from Spain.

By the 30th a depression was forming on an active front near north-west Scotland. At the same time the anticyclone over France was moving away eastwards. This pattern produced a moderate south to south-west breeze and plenty of sunshine. Temperatures climbed quickly during the morning, reaching 19°C at the Airport by midday and peaking at 21.0°C at L'Ancrese. Both these figures are about 2°C higher than anything previously recorded at this stage of the year. This was a brief burst of extreme warmth, with a marked drop of temperature coming with the passage of a cold front that night. There was just an hour or two of rain as the front went through, before the cloud broke up again, to leave us with a sunny day to end the month.

November

A large and intensifying anticyclone was moving into the western approaches at the start of the month, reaching the middle of the Channel by the early hours of the 2nd. The barometric pressure at 9 a.m. on the 2nd was 1041.9mb, a new record for November. The anticyclone continued to extend its influence eastwards, so that by the following morning a belt of high pressure extended from the middle of the Atlantic, through the Channel and then on towards the Black Sea. This weather pattern resulted in three mainly sunny and quiet days for the beginning of November, with daytime temperatures above normal, although temperatures overnight were below average. The passage of a decaying cold front brought us cloudy conditions for the 4th. A second weak front went through early on the 5th, with its passage marked by a light shower, followed by a return to sunshine.

By the 6th high pressure had lost its influence with a depression moving from Scotland into the North Sea and more active fronts pushing down into southern England. These fronts gave outbreaks of rain or drizzle and strengthening winds. Daytime temperatures stayed above normal whilst the nights became much milder due to the increased cloud. The main cold front cleared through finally on the morning of the 8th, followed by a plunge of cold air from the Arctic. Showers formed over the relatively warm sea, with hail accompanying some of the showers during the afternoon. A renewed build of pressure helped to then kill off the showers and bring more sunny weather, but temperatures were at their lowest for the month as a consequence of the Arctic flow.

Light winds and clear skies allowed the formation of a slight ground frost during the night of the 10th, but this disappeared as the cloud from a weak warm front edged in from the north-west. The sun broke through again on the 11th to give some very pleasant conditions during the late morning. Fronts affected the area on the 12th, bringing several hours of rain and drizzle during the afternoon, accompanied by mist. By the end of the day, though, air of Arctic origin had again extended south over most of the British Isles. This colder air spread to us on the 13th, which, although being a dry day, was mainly cloudy. A belt of high pressure then extended eastwards over the United Kingdom, bringing more dry weather, including a couple of sunny days. Despite an easterly flow persisting at this time temperatures stayed close to normal.

By the 18th the belt of high pressure had declined enough for a minor trough of low pressure to edge into south-east England. This trough produced periods of showery rain on the night of the 18th and during the following morning. A subsequent rise in pressure and a veer of the wind to the south-east brought a break-up of the cloud, with unbroken sunshine on the 20th. After a sunny morning on the 21st cloud spread in from the north-west as fronts moved east over southern Britain. The fronts were close by throughout the 22nd, making this a cloudy day with some light rain or drizzle, but it was, nonetheless, mild. A brief incursion of cold air affected eastern Britain the next day, whereas our temperatures were marginally above average.

A mild airstream had moved back across the whole of the British Isles by the 24th and this marked the start of a general change in the weather pattern. The area of high pressure began to slip south, allowing more active fronts to affect the United Kingdom. Outbreaks of rain, or showers, were recorded on each day during the last week and for most of this period it was mild. The 26th, though, was a colder day, but mainly sunny. For the last couple of days we had wet and misty conditions, with a few patches of hill fog. These conditions were the result of a moist south-west airflow persisting over the area for more than 48 hours.

December

Unsettled conditions, that had characterised the weather for the last week of November, continued through the first few days of the new month. Rain during the early hours of the 1st moved away in the morning as a cold front cleared the area, bringing us sunny conditions from late morning. A transient high crossed the Channel overnight, with cloud spreading in behind it to give a sunless day on the 2nd, with rain in the afternoon. Fronts from the next Atlantic system had pushed into the area by the evening of the 3rd, introducing damp conditions for most of the night. Once the fronts had gone through the weather brightened up and it turned mild, but rather windy. The 5th was also a breezy day, but with sunny spells around midday allowing the temperature to rise to the very mild category, reaching the highest reading in December since 1994.

After these very mild conditions the weather pattern began to change. On the 6th an anticyclone started to develop over the British Isles, before drifting eastwards across the North Sea. Initially we were affected by the tail-end of a front moving up the western side of Britain, which produced cloudy weather, with some light rain or drizzle overnight. By dawn on the 7th the cloud had been pushed back westwards as an easterly airflow strengthened. Over the next six days winds remained in the east, with a very low moisture content to the air. This brought five days of almost maximum possible sunshine, but with temperatures somewhat below normal. It was not until the 12th that the airflow backed to the north-east, which, due to a longer sea-track, saw the formation of a significant amount of cloud.

High pressure continued to dominate the weather for the following week, with winds blowing off the Continent. After a cloudy day on the 13th, sunny conditions returned, but only with the incursion of much colder air. Despite the colder weather we escaped any frosts, although sheltered western parts experienced several days of ground frost. A very weak set of fronts came in from the north-east early on the 16th, bringing increased cloud once more. This cloud did not make it as far as Brittany and clear skies remained tantalisingly close by through the late morning and afternoon. The next couple of days saw more sunshine, with temperatures marginally higher as well.

In the lead up to Christmas the weather was on the change. The dominant high moved westwards into the Atlantic, allowing frontal systems to push into Scotland. By the time the fronts reached here they were weak, bringing mainly cloudy weather with some rain and higher temperatures. By the 22nd a northerly flow of Arctic origin had extended to most of the British Isles, reaching the Islands during that morning to bring brighter conditions with sunny spells. The 23rd was mainly sunny, but cold, with the temperature falling quickly during the evening. The arrival of cloud during the early part of the night, though, prevented a significant frost.

For most of Christmas Eve the Channel was in a wide warm sector, which resulted in mainly cloudy, but dry, conditions. There were heavy showers in the evening, though, and showers continued into Christmas Day. Arctic air had spread down to us again by lunchtime, with the temperature dropping markedly. We escaped any snowfall, although there was a hail shower during the evening. The cold air stayed with us through Boxing Day, being replaced by much milder conditions during the morning of the 27th. The next couple of days were also mild, but rather windy. The most active depression of the month began to edge into north-west Scotland late on the 27th, bringing them blizzards on the 28th. The associated cold front reached southern England that evening, but its progress farther south was halted by a small low moving east along the Channel. Rain arrived here in the evening, continuing throughout the night and the following morning. This ensured our wettest day of the month, with the 28th receiving a fall of 15.3mm; 10mm more than any other day.

Cold air had reached us again during the morning of the 29th and it remained cold for the last two days as well. There was, though, a reasonable amount of sunshine on both days, with clear skies and light winds for the New Year's Eve celebrations.

ANNUAL WEATHER SUMMARY

MONTH	MEAN AIR TEMPERATURE °C		RAINFALL mm		SUNSHINE hrs	
	2001	DIFFERENCE FROM AVERAGE	2001	PERCENTAGE OF AVERAGE	2001	PERCENTAGE OF AVERAGE
JAN	7.0	+0.4	210.0	235.4	78.8	136.1
FEB	7.2	+0.9	113.2	148.0	87.0	111.0
MAR	8.3	+0.9	179.6	269.3	87.9	69.7
APR	9.1	+0.4	88.9	174.0	163.9	89.5
MAY	12.4	+0.8	14.0	28.2	286.3	122.5
JUN	14.9	+0.9	14.5	31.4	292.4	122.8
JUL	17.3	+1.1	42.5	113.0	275.5	111.0
AUG	17.7	+1.1	64.0	139.7	209.3	89.1
SEP	15.4	+0.3	21.1	31.6	193.7	111.3
OCT	15.2 *	+2.6	105.9	118.9	134.8	113.9
NOV	10.0	+0.5	57.0	58.2	105.4	140.7
DEC	7.1	-0.7	39.1	36.4	108.9 *	208.6
YEAR	11.8	+0.8	949.8	115.3	2023.9	111.2

* NEW RECORD

SUNSHINE

MONTH	SUNSHINE (hours)						SUNNIEST DAY		% OF POSSIBLE SUN		SUNLESS DAYS	
	2001	AVERAGE 1971-2000	RECORD HIGHEST	YEAR	RECORD LOWEST	YEAR	2001	DATE	2001	AVERAGE 1971-2000	2001	AVERAGE 1971-2000
JAN	78.8	57.9	112.8	1998	26.0	1966	7.8	14th	29.3	19.5	7	11.5
FEB	87.0	78.4	140.9	1959	36.1	1976	9.0	14th	29.6	26.9	6	7.5
MAR	87.9	126.1	206.1	1973	67.4	1964	8.5	29th	23.9	35.7	8	5.2
APR	163.9	183.2	280.4	1984	122.2	1981	11.9	19th	40.1	44.8	1	2.6
MAY	286.3	233.8	336.4	1989	136.9	1981	14.5	30th	60.6	49.5	0	1.8
JUN	292.4	238.2	355.3	1975	147.8	1977	15.4	22nd	60.8	49.7	0	2.2
JUL	275.5	248.1	335.9	1959	167.7	1972	14.5	19th	56.9	51.8	0	1.3
AUG	209.3	235.0	323.0	1955	139.2	1992	13.5	10th	47.3	51.0	0	1.4
SEP	193.7	174.0	266.5	1959	104.5	1956	11.5	1st	51.4	44.7	3	2.6
OCT	134.8	118.3	176.4	1971	72.6	1968	9.3	10th	40.7	36.1	2	4.7
NOV	105.4	74.9	117.7	1988	38.9	1981	8.3	10th	38.9	26.4	6	6.9
DEC	108.9 *	52.2	98.5	1962	26.6	1966	7.7	7,8,10	42.7	20.0	4 *	11.5
YEAR	2023.9	1819.9	2262.8	1959	1532.5	1981	15.4	22-Jun	45.4	40.5	37 *	59.0

ATMOSPHERE PRESSURE (Millibars) AT MEAN SEA LEVEL

MONTH	MEAN PRESSURE						EXTREME PRESSURE					
	2001	AVERAGE 1971-2000	RECORD HIGHEST	YEAR	RECORD LOWEST	YEAR	RECORD HIGHEST	DATE & TIME G.M.T.	RECORD LOWEST	DATE & TIME G.M.T.	RECORD HIGHEST	DATE & TIME G.M.T.
JAN	1008.6	1016.2	1030.5	1992	1001.1	1948	1045.9	30/1989 0945	966.6	20/1965 1220	1045.9	30/1989 0945
FEB	1019.2	1015.6	1032.1	1959	1003.5	1966	1047.5	7/1964 1050	952.5	25/1989 1050	1047.5	7/1964 1050
MAR	1003.6	1016.1	1029.9	1953	1003.0	1947	1047.7	3/1990 0930	969.6	13/1951 1630	1047.7	3/1990 0930
APR	1015.0	1015.6	1025.1	1954	1002.6	1998	1040.2	10/1947 0800	981.4	23/1969 0950	1040.2	10/1947 0800
MAY	1019.1	1015.7	1025.3	1991	1007.8	1983	1036.1	22/1991 0900	993.5	17/1955 0850	1036.1	22/1991 0900
JUN	1019.0	1018.0	1024.5	1962	1009.5	1997	1037.5	14/1959 0850	988.9	9/1954 1500	1037.5	14/1959 0850
JUL	1015.6	1018.8	1023.5	1969	1013.9	1988	1034.5	12/1969 1150	986.6	3/1988 0845	1034.5	12/1969 1150
AUG	1016.3	1017.6	1022.0	1981	1011.9	1963	1036.1	12/1949 0930	982.3	9/1948 0000	1036.1	12/1949 0930
SEP	1017.5	1017.7	1024.2	1977	1009.9	1999	1037.3	22/1947 0700	974.7	13/1993 0630	1037.3	22/1947 0700
OCT	1013.1	1016.4	1024.5	1971	1003.9	1960	1040.0	26/1969 2200	959.5	16/1987 0200	1040.0	26/1969 2200
NOV	1026.5 *	1015.7	1026.2	1978	1001.5	2000	1040.5	30/1980 2345	965.0	19/1996 1720	1040.5	30/1980 2345
DEC	1025.2	1016.2	1029.5	1991	1000.6	1978	1046.0	25/1991 0950	964.2	8/1954 1450	1046.0	25/1991 0950
YEAR	1016.5	1016.6	1019.8	1949	1013.4	1960	1047.7	03/02/90 0930	952.5	25/02/89 1050	1047.7	03/02/90 0930

RAINFALL

MONTH	RAINFALL mm						WETTEST DAY		RAIN DAYS (≥0.2mm)		WET DAYS (≥1.0mm)	
	2001	AVERAGE 1971-2000	RECORD HIGHEST	YEAR	RECORD LOWEST	YEAR	2001	DATE	2001	AVERAGE 1971-2000	2001	AVERAGE 1971-2000
JAN	210.0 *	89.2	190.4	1988	15.4	1992	35.8 *	11th	22	19.0	19	14.8
FEB	113.2	76.5	182.8	1978	4.8	1965	32.5	8th	15	15.9	10	12.3
MAR	179.6 *	66.7	160.2	1947	2.7	1961	23.4	21st	22	16.1	19	12.2
APR	88.9	51.1	130.4	1966	2.9	1980	13.1	30th	18	13.3	14	9.9
MAY	14.0	49.6	128.7	1994	4.1	1989	6.9	14th	4	12.4	3	9.4
JUN	14.5	46.2	129.7	1986	0.6	1976	4.1	15th	8	10.3	6	6.8
JUL	42.5	37.6	120.2	1960	3.9	1999	11.7	17th	11	9.7	7	6.7
AUG	64.0	45.8	122.0	1951	3.8	1955	20.0	2nd	14	11.1	10	7.6
SEP	21.1	66.8	194.5	1952	6.9	1997	7.2	30th	14	13.1	7	9.6
OCT	105.9	89.1	233.9	1960	3.4	1978	25.1	7th	18	15.3	14	11.9
NOV	57.0	97.9	192.5	1965	16.1	1978	13.1	29th	14	19.0	10	14.9
DEC	39.1	107.3	249.6	1999	28.1	1953	15.3	28th	14	19.1	11	15.4

TEMPERATURE °C

MONTH	MEAN MAXIMUM		HIGHEST MAXIMUM				MEAN MINIMUM		LOWEST MINIMUM			
	2001	AVERAGE 1971-2000	2001	DATE	RECORD HIGHEST	DATE	2001	AVERAGE 1971-2000	2001	DATE	RECORD LOWEST	DATE
JAN	9.0	8.4	11.9	1st	13.3	4/1948	4.9	4.7	0.8	15th	-7.8	20/1963
FEB	9.2	8.2	12.5	11th	15.0	29/1948	5.2	4.4	0.4	25th	-7.2	21/48,7/91
MAR	10.2	9.6	13.6	31st	19.4	29/1965	6.4	5.2	1.7	2nd	-2.2	10,11/1958
APR	11.4	11.2	14.2	1st	23.0	22/1984	6.9	6.2	3.5	19th	-1.4	11/1986
MAY	15.4	14.4	23.8	12th	25.7	5/1995	9.4	8.7	5.7	5th	0.1	2/1979
JUN	18.2	16.9	27.4	25th	30.8	26/1976	11.6	11.1	8.0	8th	5.4	1/1975
JUL	20.5	19.2	28.4	29th	31.7	1/1952	14.2	13.2	9.9	15th	8.3	8/1954
AUG	20.4	19.5	26.0	14th	32.8	3/1990	14.9	13.7	12.8	9th,10th	9.2	28/1986
SEP	17.7	17.6	19.5	28th	30.6	2/1961	13.0	12.5	10.8	21st	5.8	28/1974
OCT	17.2 *	14.7	20.7	13th	23.3	4,5/1959	13.3 *	10.5	10.2	10th	3.9	30/1983
NOV	12.1	11.4	14.5	2nd,6th	16.8	1/1999	7.8	7.7	4.4	9th	0.0	18/52,19/85 22,28/93
DEC	9.1	9.6	14.2	5th	15.6	6/1953	5.0	6.0	1.6	23rd	-3.8	24/1963
YEAR	14.2	13.4	28.4	29-Jul	32.8	03/08/90	9.4	8.7	0.4	25-Feb	-7.8	20/01/63

MONTH	MEAN DAILY AIR TEMPERATURE						MEAN DAILY RANGE					
	2001	AVERAGE 1971-2000	RECORD HIGHEST	YEAR	RECORD LOWEST	YEAR	2001	AVERAGE 1971-2000	RECORD HIGHEST	YEAR	RECORD LOWEST	YEAR
JAN	7.0	6.6	8.6	1993	1.5	1963	4.1	3.7	4.7	1984	3.1	1957,66,76,91,96
FEB	7.2	6.3	9.0	1990	1.5	1986	4.0	3.8	4.6	1988	3.0	1986
MAR	8.3	7.4	10.3	1957	4.4	1962	3.8	4.4	6.4	1953	3.7	1964,81,88
APR	9.1	8.7	10.9	1961	6.4	1986	4.5	5.0	6.3	1984	3.7	1994
MAY	12.4	11.6	13.9	1989	9.9	1984	6.0	5.7	7.3	1989	4.6	1981
JUN	14.9	14.0	16.7	1976	11.3	1972	6.6	5.8	8.3	1976	4.1	1977
JUL	17.3	16.2	19.4	1983	13.8	1954	6.3	5.9	7.9	1983	4.4	1954
AUG	17.7	16.6	19.1	1995	14.3	1956	5.5	5.8	7.3	1955	4.3	1958
SEP	15.4	15.1	17.5	1949	12.8	1986	4.7	5.1	6.1	1961	3.6	1967
OCT	15.2 *	12.6	14.7	1995	9.6	1974	3.9	4.2	5.1	1947	3.5	1968
NOV	10.0	9.5	12.0	1994	7.7	1993	4.3	3.7	4.9	1969	2.8	1994
DEC	7.1	7.8	10.1	1953	4.6	1950	4.1	3.6	4.5	1968	2.8	1987
YEAR	11.8	11.1	12.1	1989	9.6	1963	4.8	4.7	5.2	1949,89,90	4.3	1977

MONTH	LOWEST GRASS MINIMUM TEMPERATURE				DAYS WITH AIR FROST				DAYS WITH GRASS MINIMUM BELOW 0°C			
	2001	DATE	RECORD LOWEST	DATE	2001	AVERAGE 1971-2000	RECORD HIGHEST	YEAR	2001	AVERAGE 1971-2000	RECORD HIGHEST	YEAR
JAN	-4.6	20th	-10.0	29/1947	0	2.5	16	1963	8	7.4	20	1985
FEB	-4.4	15th	-11.1	12/1978	0	2.6	18	1986	7	7.8	24	1956
MAR	-3.4	2nd	-9.4	3/1965	0	0.6	4	1947	3	7.0	18	1955
APR	-1.7	17th	-7.0	5/1990	0	0.1	1	1978,86	4	4.5	10	1984
MAY	-0.9	5th	-5.6	5/1979	0	0.0	--		1	2.0	9	1979
JUN	-0.9	9th	-3.0	14/1987	0	0.0	--		1	0.3	3	1987,89
JUL	3.1	16th	1.0	Jul-96	0	0.0	--		0	0.0	--	
AUG	6.4	1st	0.8	11/1981	0	0.0	--		0	0.0	--	
SEP	2.0	25th	-1.0	23/1979	0	0.0	--		0	0.1	1	1979,86,87
OCT	4.2	10th	-4.0	30/1983	0	0.0	--		0	0.5	6	1992
NOV	-2.0	11th	-5.6	29/1987	0	0.0	--		4	3.3	9	1988
DEC	-6.0	24th	-8.9	29/1964,27/1995	0	1.0	5	1970	7	5.4	10	1976

NUMBER OF DAYS WITH

MONTH	FOG						THUNDER			
	2001	AVERAGE 1971-2000	RECORD HIGHEST	YEAR	RECORD LOWEST	YEAR	2001	AVERAGE 1971-2000	RECORD HIGHEST	YEAR
JAN	3	5.8	13	1955,82	2	1963,67,72,74,92	3	0.8	4	1979
FEB	6	7.0	15	1979	0	1969	1	0.5	3	1957,89
MAR	10	7.9	16	1960,94	0	1968,73	1	0.5	4	1958,67,82,87,95
APR	6	6.0	16	1963	2	1976,90	0	0.7	4	1981,95
MAY	7	7.1	19	1964	2	1988	0	1.2	4	1950,71
JUN	6	9.9	18	1965	1	1975	0	1.3	6	1982
JUL	10	11.2	20	1972,78	4	1966	1	1.6	5	1982,94
AUG	10	9.4	21	1997	2	1976	3	1.4	5	1974
SEP	1	5.6	15	1987	0	1952,53,72	0	1.2	10	1976
OCT	4	4.0	17	1986	0	1971,73	0	1.4	5	1964
NOV	3	3.9	14	1992	0	-	0	0.8	4	1969
DEC		4.6	11	1995	0	1947,64,75		1.1	4	1976,93
YEAR		82.6	115	1994	55	1989		12.3	21	1982,95

MONTH	SNOW OR SLEET				HAIL					
	2001	AVERAGE 1971-2000	RECORD HIGHEST	YEAR	2001	AVERAGE 1971-2000	RECORD HIGHEST	YEAR	RECORD LOWEST	YEAR
JAN	0	2.9	12	1963,85	4	5.4	13	1984,85	0	1955,64,70,92,93
FEB	4	3.9	18	1956	6	3.9	13	1988	0	—
MAR	4	1.7	10	1962,70	3	3.9	9	1979	0	—
APR	0	0.9	4	1970	5	3.0	10	1994	0	—
MAY	0	0.1	3	1979	0	0.6	3	1955,82	0	—
JUN	0	0.0	—	—	0	0.1	1	1986,87	0	—
JUL	0	0.0	—	—	0	0.1	1	1971,87,94	0	—
AUG	0	0.0	—	—	0	0.2	1	—	0	—
SEP	0	0.0	—	—	0	0.4	2	1973,74,84	0	—
OCT	0	0.0	—	—	0	1.7	7	1992	0	—
NOV	0	0.6	5	1980	2	4.2	11	2000	0	1948,55,83,94,95
DEC		1.6	8	1962,70		4.5	10	1979,82,86,93	0	1964,68,75
YEAR		11.6	30	1962,63,70,79		28.1	50	1986	10	1964

MONTH	RAIN DAYS(≥0.2mm)				WET DAYS(≥1.0mm)					
	2001	RECORD HIGHEST	YEAR	RECORD LOWEST	YEAR	2001	RECORD HIGHEST	YEAR	RECORD LOWEST	YEAR
JAN	22	31	1948	4	1992	19	28	1948	3	1992
FEB	15	26	1970,95	2	1959	10	23	1951	1	1965
MAR	22	27	1979	3	1961	19	21	1947	1	1961
APR	18	21	1983	3	1976	14	18	1966	1	1976,80
MAY	4	26	1981	2	1989	3	19	1981	1	1989
JUN	8	21	1991	3	1975,76	6	14	1987,91	0	1976
JUL	11	20	1960	3	1999	7	15	1950	1	1999
AUG	14	21	1963	1	1976	10	18	1992	1	1955,76
SEP	14	23	1950,52	4	1959,97	7	21	1950	2	1959,97
OCT	18	28	1981	5	1965,78	14	24	1981	1	1978
NOV	14	27	1960	8	1978	10	25	1960	5	1988

WIND SPEED

MONTH	MEAN SPEED (KNOTS)		NUMBER OF DAYS OF GALES				HIGHEST GUST (KNOTS)			
	2001	AVERAGE 1971-2000	2001	AVERAGE 1971-2000	RECORD HIGHEST	YEAR	2001	DATE	RECORD HIGHEST	DATE
JAN	13.2	14.7	0	2.6	11	1984	43	24th	77	25/1990
FEB	11.1	13.3	0	1.5	10	1990	45	12th	69	9/1988, 11/1990
MAR	11.4	12.6	0	1.0	6	1980	46	13th	70	10/1982
APR	11.6	11.9	0	0.3	2	1964, 72, 83, 94 1954, 55, 58	38	3rd	60	9/1994
MAY	10.3	11.1	0	0.1	1	{ 1962, 72, 79, 96	43	1st	58	19/1996
JUN	8.4	10.6	0	0.0	0	-	32	2nd	51	16/1965
JUL	8.6	10.3	0	0.0	1	1956, 69	31	10th, 17th	63	31/1983
AUG	9.9	9.7	0	0.0	1	1956, 61, 86	31	4th, 7th, 9th	52	26/1986
SEP	11.4	11.1	0	0.2	2	1953, 65, 74, 83	38	13th	60	29/1962
OCT	11.7	12.5	1	0.9	4	1967, 76	48	7th	81	16/1987
NOV	11.2	13.5	1	1.3	8	1977	51	8th	73	23/1984
DEC	13.4	14.5	0	2.2	9	1979	40	25, 28	83	15/1979
YEAR	11.0	12.1	2 *	10.1	20	1972	51	08-Nov	83	15/12/79

PERCENTAGE FREQUENCIES OF HOURLY MEAN WIND SPEED AND DIRECTION

2001

MONTH	DIRECTION RANGE	350 -010	020 -040	050 -070	080 -100	110 -130	140 -160	170 -190	200 -220	230 -250	260 -280	290 -310	320 -340	SPEED ONLY
	SPEED RANGE													
JAN	0-3 knots	-	-	-	-	-	-	-	-	-	-	-	-	3.9
	4-10 knots	2.3	0.7	0.5	5.8	6.2	2.4	0.8	3.1	1.9	1.6	4.3	4.3	33.9
	11-21 knots		2.3	6.2	5.5	1.1	5.1	10.5	9.7	4.8	3.8	2.7	0.4	52.0
	22-33 knots		0.4	7.0	0.5		0.1	0.7	0.7	0.7	0.1			10.2
	≥34 knots													
	DIRECTION ONLY	2.3	3.4	13.7	11.8	7.3	7.7	12.0	13.4	7.4	5.5	7.0	4.7	
FEB	0-3 knots	-	-	-	-	-	-	-	-	-	-	-	-	5.5
	4-10 knots	5.2	6.7	3.4	1.3	2.4	2.4	2.2	1.0	0.7	3.4	3.7	6.0	38.5
	11-21 knots	6.3	5.2	5.4		3.4	10.3	8.9	3.1	2.7	3.1	5.2	0.4	53.6
	22-33 knots						0.1	0.6	0.7	0.3	0.1	0.4		2.4
	≥34 knots													
	DIRECTION ONLY	11.5	11.9	8.8	1.3	2.4	5.8	12.6	10.6	4.6	6.4	7.0	11.6	
MAR	0-3 knots	-	-	-	-	-	-	-	-	-	-	-	-	1.9
	4-10 knots	3.4	3.4	2.4	5.4	2.3	5.4	7.7	5.6	3.4	1.7	0.8	0.4	41.8
	11-21 knots	0.4	3.1	3.5	8.9	5.6	2.3	3.1	11.0	10.2	4.0	2.6	0.3	55.0
	22-33 knots			0.1						0.4	0.8			1.3
	≥34 knots													
	DIRECTION ONLY	3.8	6.5	6.0	14.2	7.9	7.7	10.8	16.7	14.0	6.6	3.4	0.7	
APR	0-3 knots	-	-	-	-	-	-	-	-	-	-	-	-	6.3
	4-10 knots	8.2	0.7	1.4	1.3	2.2	4.2	4.7	3.9	2.2	1.9	1.4	4.3	36.4
	11-21 knots	4.7	0.8			0.8	4.0	3.9	7.2	14.2	10.3	4.4	6.0	56.4
	22-33 knots							0.3		0.1	0.1		0.4	1.0
	≥34 knots													
	DIRECTION ONLY	12.9	1.5	1.4	1.3	3.1	8.2	8.9	11.1	16.5	12.4	5.8	10.7	
MAY	0-3 knots	-	-	-	-	-	-	-	-	-	-	-	-	3.5
	4-10 knots	5.1	11.7	7.0	1.9	1.2	1.6	2.2	4.8	2.4	2.8	3.8	7.7	52.2
	11-21 knots	0.9	12.4	13.4	1.2			0.5	0.9	3.5	3.8	3.8	1.1	41.5
	22-33 knots		1.1	1.2						0.1	0.4			2.8
	≥34 knots													
	DIRECTION ONLY	6.0	25.1	21.6	3.1	1.2	1.6	2.7	5.8	6.0	7.0	7.5	8.7	
JUN	0-3 knots	-	-	-	-	-	-	-	-	-	-	-	-	8.5
	4-10 knots	5.3	3.9	3.9	1.0	3.6	4.3	5.4	4.4	3.3	6.8	7.8	12.9	62.6
	11-21 knots			0.8	0.7		0.3	1.8	1.7	7.6	10.0	4.7	1.3	28.9
	22-33 knots													
	≥34 knots													
	DIRECTION ONLY	5.3	3.9	4.7	1.7	3.6	4.6	7.2	6.1	11.0	16.8	12.5	14.2	
JUL	0-3 knots	-	-	-	-	-	-	-	-	-	-	-	-	8.6
	4-10 knots	3.4	2.4	8.2	3.2	3.2	3.5	2.2	6.0	8.6	5.9	12.6	6.0	65.3
	11-21 knots	0.9		0.9	0.8	0.1	1.2	0.8	2.6	7.5	7.3	1.7	2.2	26.1
	22-33 knots													
	≥34 knots													
	DIRECTION ONLY	4.3	2.4	9.1	4.0	3.4	4.7	3.0	8.6	16.1	13.2	14.4	8.2	
AUG	0-3 knots	-	-	-	-	-	-	-	-	-	-	-	-	6.2
	4-10 knots	1.7	3.8	4.8	3.6	4.7	4.4	3.2	4.8	6.2	6.5	5.4	2.0	51.2
	11-21 knots	0.1	0.1	2.7	2.7	0.9	0.8	0.5	1.3	18.7	5.8	6.3	1.5	42.5
	22-33 knots											0.1		0.1
	≥34 knots													
	DIRECTION ONLY	1.9	4.8	7.5	6.3	5.6	5.2	3.8	6.2	24.9	12.2	11.8	3.5	
SEP	0-3 knots	-	-	-	-	-	-	-	-	-	-	-	-	2.1
	4-10 knots	6.9	2.8	1.9	1.9	0.6	1.9	3.6	1.0	1.8	3.3	6.4	7.8	40.0
	11-21 knots	7.5	2.4	1.9	0.7	0.3	1.0	2.1	3.2	5.0	7.8	11.7	12.6	56.1
	22-33 knots								0.1	0.3	0.4	0.8	0.1	1.8
	≥34 knots													
	DIRECTION ONLY	14.4	5.1	3.9	2.6	0.8	2.9	5.7	4.3	7.1	11.5	18.9	20.6	
OCT	0-3 knots	-	-	-	-	-	-	-	-	-	-	-	-	4.6
	4-10 knots	0.3	0.7	1.9	1.5	1.1	10.2	5.0	5.0	3.5	1.9	1.3	1.7	34.0
	11-21 knots					2.4	5.8	8.7	17.9	15.3	4.7	1.7	1.5	58.1
	22-33 knots							0.5	1.7	1.1				3.4
	≥34 knots													
	DIRECTION ONLY	0.3	0.7	1.9	1.5	3.5	16.0	14.2	24.6	19.9	6.6	3.1	3.2	
NOV	0-3 knots	-	-	-	-	-	-	-	-	-	-	-	-	5.0
	4-10 knots	9.9	9.2	2.6	6.4	0.7	0.8	0.3	1.4	0.8	2.9	5.1	5.6	45.7
	11-21 knots	3.2	7.8	2.1	5.8	0.4			2.5	7.6	7.1	4.9	3.1	44.4
	22-33 knots			0.1	0.1					0.7	2.6	1.0	0.1	4.7
	≥34 knots										0.1			0.1
	DIRECTION ONLY	13.1	16.9	4.9	12.4	1.1	0.8	0.3	3.9	9.2	12.8	11.0	8.8	
DEC	0-3 knots	-	-	-	-	-	-	-	-	-	-	-	-	5.9
	4-10 knots	3.5	5.2	3.1	4.6	2.0	1.6	0.3	0.8	0.8	1.5	1.6	2.6	27.6
	11-21 knots	0.9	1.9	10.1	18.5	0.4	1.7		3.5	0.7	7.7	5.8	5.4	56.6
	22-33 knots			3.9	0.7				0.4	0.4	4.6			9.9
	≥34 knots													
	DIRECTION ONLY	4.4	7.1	17.1	23.8	2.4	3.4	0.3	4.7	1.9	13.7	7.4	7.9	
	0-3 knots	-	-	-	-	-	-	-	-	-	-	-	-	5.1
	4-10 knots	4.6	4.2	3.4	3.2	2.5	3.6	3.1	3.5	3.0	3.4	4.5	5.1	44.1

GUERNSEY AIRPORT MET OFFICE 2001**Days and Number of Hours with FOG (Vis <1000m) During Flying Hours**0520-2120 Local Time

DATE	JAN	FEB	MAR	APR	MAY	JUN	JUL	AUG	SEP	OCT	NOV	DEC	
1								1.5					
2		2.0					0.5						
3		3.5											
4							2.5						
5		1.0		0.5		1.0	8.5	2.0					
6				3.5			5.5	2.5					
7							3.0	0.5		0.5			
8													
9			2.5	5.0									
10		1.5	0.5				0.5						
11			10.5		0.5								
12								0.5					
13					0.5								
14			4.5					0.5		3.0			
15			1.5					1.5					
16			0.5										
17							0.5						
18													
19													
20			3.0										
21	11.5		0.5				3.5						
22			1.0				0.5			1.0			
23	0.5							2.0					
24			2.0			1.0		9.5					
25								5.0			0.5		
26					6.5	1.0			0.5				
27													
28					8.5					1.0		1.0	
29					3.0					1.0	0.5		
30					1.0						0.5		
31			1.5										
Tot Hrs	12.0	8.0	28.0	9.0	20.0	3.0	25.0	25.5	0.5	6.5	1.5	1.0	140.0
Tot Days	2	4	11	3	6	3	9	10	1	5	3	1	58

Averages for Period 1991-2000

	Jan	Feb	Mar	Apr	May	Jun	Jul	Aug	Sep	Oct	Nov	Dec	
Hours	19.9	27.1	30.6	25.4	20.4	23.0	32.9	21.4	8.7	5.6	11.4	11.9	237.9
Days	4.5	6.1	7.8	6.7	6.3	7.5	10.0	8.1	3.1	3.0	3.4	4.3	70.8

GUERNSEY AIRPORT MET OFFICE 2001**Days and Number of Hours with RVR<600m During Flying Hours**0520-2120 Local Time

DATE	JAN	FEB	MAR	APR	MAY	JUN	JUL	AUG	SEP	OCT	NOV	DEC	
1								0.5					
2													
3		0.5											
4							2.5						
5							3.5						
6				2.0			3.0	2.0					
7							1.0						
8													
9			1.5	2.0									
10		1.0											
11			7.5										
12													
13													
14			2.0							0.5			
15								0.5					
16													
17													
18													
19													
20			1.0										
21	7.5						0.5						
22			0.5										
23								1.0					
24			0.5			1.0		6.5					
25								3.5					
26					1.5								
27													
28					6.0							1.0	
29					0.5								
30													
31			0.5										
Tot Hrs	7.5	1.5	13.5	4.0	8.0	1.0	10.5	14.0	0.0	0.5	0.0	1.0	61.5
Tot Days	1	2	7	2	3	1	5	6	0	1	0	1	29

Averages for Period 1991-2000

	Jan	Feb	Mar	Apr	May	Jun	Jul	Aug	Sep	Oct	Nov	Dec	
Hours	10.1	13.0	14.3	13.1	9.6	11.0	14.4	7.9	3.1	1.7	4.3	4.6	106.8
Days	2.9	3.3	4.4	4.2	3.8	4.3	6.1	4.9	1.4	1.2	1.7	1.6	39.8

REPORT FOR ROCQUAINE

MONTH	TEMPERATURE °C						RAINFALL mm			MEAN RH% AT 9 a.m.	CLOUD OKTAS AT 9a.m.
	MEAN MAXIMUM	HIGHEST MAXIMUM	DATE	MEAN MINIMUM	LOWEST MINIMUM	DATE	2001	WETTEST DAY	DATE		
JAN	9.7	12.8	1st	5.2	-0.6	15th	200.4 *	35.2 *	11th	83.4	5.6
FEB	10.2	13.7	11th	5.8	1.6	25th	114.4	31.6 *	8th	83.3	5.7
MAR	11.6	16.2	31st	6.8	-1.1 *	2nd	162.1 *	20.8	21st	85.9	6.6
APR	12.8	15.9	1st	7.8	3.9	19th	85.5	13.9	26th	78.1	5.5
MAY	17.0	25.7	12th	9.5	5.3	5th	14.3	5.5	15th	77.7	4.9
JUN	19.1	28.2	25th	12.1	7.9	4th	13.6	3.6	14th	75.4	5.1
JUL	21.6	29.6	3rd	14.6	11.4	16th	36.4	9.6	17th	77.6	5.1
AUG	21.6	26.7	14th	15.5	13.3	21st	58.0	15.9	6th	83.3	5.7
SEP	18.7	21.4	27th	13.8	9.0	22nd	16.8	4.6	30th	78.3	5.7
OCT	18.0	22.2 *	13th	13.9 *	11.4	29th	97.9	23.9	7th	83.9	5.5
NOV	12.8	15.4	6th	8.4	4.5	20th	42.2	9.8	29th	78.3	5.2
DEC	10.0	14.9	5th	5.2	1.7	19th	34.2	13.8	28th	76.5	4.7
YEAR	15.3	29.6	03-Jul	5.2	-1.1	02-Mar	875.8	35.2	11-Jan	80.1	5.4

REPORT FOR L'ANCRESE

MONTH	TEMPERATURE °C						RAINFALL mm			SUNSHINE HRS	
	MEAN MAXIMUM	HIGHEST MAXIMUM	DATE	MEAN MINIMUM	LOWEST MINIMUM	DATE	2001	WETTEST DAY	DATE		
JAN	9.9	12.7	23rd	5.3	0.1	20th	216.5 *	35.2 *	11th	78.4	
FEB	10.3	14.4	11th	5.8	-0.1	15th	105.7	24.2	8th	81.0	
MAR	12.0	17.5	31st	7.1	2.1	2nd	160.0 *	19.9	20th	99.0	
APR	13.0	15.7	2nd	7.6	2.4	17th	85.5	12.7	26th	159.9	
MAY	16.0	20.5	28th	9.6	5.2	14th	14.9	5.8	15th	257.5	
JUN	18.8	23.2	26th	11.6	4.4 *	4th	11.9	4.0	14th	282.0	
JUL	21.0	27.2	3rd	14.4	9.8	16th	26.5	12.6	17th	265.3	
AUG	21.4	24.6	14th	15.3	12.4	21st	50.9	17.2	8th	195.6	
SEP	18.8	21.3	27th	13.7	7.7	25th	18.8	5.9	30th	192.3	
OCT	18.1	21.0	30th	13.7 *	8.0	29th	108.0	26.9	7th	139.0	
NOV	13.1	16.2	6th	8.6	2.8	21st	50.0	8.7	29th	100.7	
DEC											
YEAR											

Note:- Sunshine figures have been adversely affected at times by a nearby tree and roof

REPORT FOR SARK

MONTH	TEMPERATURE °C		RAINFALL	SUNSHINE
	MEAN MAXIMUM	MEAN MINIMUM	(mm)	(hrs)
JAN	8.9	4.7	154.2	83.9
FEB	9.5	5.6	96.3	86.0
MAR	10.9	6.5	145.2	105.7
APR	12.7	6.7	77.8	174.7
MAY	15.9	9.6	13.8	293.2
JUN	19.8	11.8	15.2	304.4
JUL	21.4	14.2	39.3	277.0
AUG	21.3	15.0	68.2	226.2
SEP	19.2	13.5	23.3	196.2

METEOROLOGICAL OBSERVATIONS GUERNSEY AIRPORT JANUARY 2001

Y	DATE	BAROMETER	TEMPERATURE deg C					WIND				RAIN	SUN	WEATHER			
			AIR			GRASS	SOIL		DIR'N	SPEED(knots)							
			mb														
		at 9a.m.	MAX	MIN	MEAN	MIN	30cm	100cm	9a.m.	9a.m.	MEAN	MAX	mm	hrs			
DN	1	990.2	11.9	6.3	9.1	3.5	5.8	8.2	190	12	15.4	33	5.4	3.6	Hvy rain early bec fine. Ocnl cloudy pm. Hvy shwrs later. Fine		
JE	2	983.2	11.7	8.3	10.0	6.3	6.9	8.0	200	20	19.7	37	4.0	1.7	Fine bec mainly cloudy. Shwrs		
ED	3	1003.3	10.7	5.6	8.2	2.6	7.2	8.0	190	15	15.3	40	25.0	NIL	Ocnl fair early. Rain late am, ocnl hvy rain pm. Fair later		
IU	4	992.1	11.2	7.3	9.3	6.3	7.4	8.2	250	18	17.0	38	19.6	2.2	Rain am. Tempo hvy rain. Shwrs by midday. Ocnl fair. Rain evng		
RI	5	985.4	11.4	6.1	8.8	6.8	7.7	8.3	270	12	11.3	34	8.1	0.8	Hvy rain early. Fog patch. Tempo fair. Ocnl rain pm. Shwrs later		
AT	6	1001.6	10.5	5.0	7.8	-0.2	7.6	8.5	240	06	9.7	28	2.8	3.2	Hvy shwrs early, hail bec fair or fine. T&L evng, hail later		
JN	7	1010.4	8.9	5.1	7.0	0.1	7.3	8.4	310	05	7.0	26	0.5	4.4	Slt shwrs early bec mainly fair. Ocnl cloudy pm		
DN	8	1017.2	8.8	3.8	6.3	-0.1	6.8	8.5	280	10	8.9	22	0.2	3.2	Fine. Shwr early. Cloudy late am, slt shwrs. Fair evng		
JE	9	1012.4	6.5	3.7	5.1	-2.4	6.4	8.3	120	11	11.9	30	10.6	0.2	Mainly cloudy. Rain late		
ED	10	999.2	7.1	3.7	5.4	2.3	6.2	8.2	050	21	21.1	36	0.9	NIL	Cloudy, rain or drzl am. Drzl pm		
IU	11	1010.4	8.3	5.9	7.1	4.6	6.3	8.1	080	14	21.2	37	35.8	NIL	Cloudy, drzl. Rain pm, ocnl hvy rain. Mist		
RI	12	1018.1	7.6	5.3	6.5	5.2	6.8	7.9	060	24	24.0	37	0.1	NIL	Rain, drzl & mist am. Cloudy pm bec fair late evng		
AT	13	1026.4	7.8	3.4	5.6	0.9	6.3	7.9	090	19	19.1	31	NIL	7.7	Fine, dry air pm		
JN	14	1028.9	7.6	3.5	5.6	0.7	5.7	7.9	070	22	21.4	42	NIL	7.8	Fine, ocnl dry air. Tempo fair late evng		
DN	15	1021.9	5.1	0.8	3.0	-1.8	5.3	7.7	080	09	10.0	21	NIL	6.5	Fine bec cloudy by evng		
JE	16	1019.6	5.1	2.0	3.6	-1.7	4.8	7.5	100	05	8.0	20	TR	0.2	Cloudy. Slt rain evng		
ED	17	1017.0	7.4	4.5	6.0	1.9	5.0	7.3	100	05	7.1	14	NIL	2.6	Cloudy bec haze. Ocnl fair early pm. Cloudy		
IU	18	1016.4	7.3	4.4	5.9	3.3	5.3	7.3	100	07	9.0	18	NIL	2.4	Cloudy. Bec fair pm. Fine by evng		
RI	19	1021.6	8.1	3.0	5.6	-1.1	5.2	7.1	110	04	4.4	12	NIL	3.4	Fair ocnl cloudy bec cloudy pm		
AT	20	1025.5	10.0	3.9	7.0	-4.6	5.1	7.2	220	02	5.7	20	19.6	5.8	Fair or fine, slt hoar frost. Tempo cloudy. Dry air pm. Rain late		
JN	21	1012.3	10.5	5.0	7.8	1.5	5.4	7.1	190	14	13.3	29	19.9	NIL	Rain, drzl & mist. Tempo hvy rain. Fog, tempo thick fog. Hvy rain		
DN	22	1000.3	10.5	7.4	9.0	7.2	6.6	7.0	150	19	15.7	34	4.8	0.6	Drzl & fog early. Rain late am. Shwrs pm. Hvy shwrs late evng		
JE	23	993.8	11.6	7.7	9.7	4.1	6.7	7.2	160	18	17.8	40	18.4	0.1	Bec cloudy, rain. Tempo hvy rain & mist. Fog patch. Hvy shwr		
ED	24	995.0	11.1	6.5	8.8	3.9	7.2	7.3	250	17	16.3	43	5.5	5.3	Hvy shwrs am, hail. Bec fine. Tempo shwrs pm		
IU	25	999.2	8.6	4.9	6.8	2.1	6.9	7.4	200	14	14.2	29	7.4	2.5	Cloudy, ocnl fair. Shwrs. Hvy rain & hail mid am. Slt T&L. Hvy shwrs		
RI	26	998.8	7.7	4.3	6.0	2.7	6.5	7.5	200	15	15.2	31	10.2	NIL	Freq shwrs early. Slt T&L. Slt hail. Rain pm, tempo hvy rain		
AT	27	1004.5	10.0	5.3	7.7	2.7	6.3	7.5	280	12	12.6	30	1.7	4.8	Fair, ocnl fine early. Slt shwr midday bec cloudy pm		
JN	28	1000.3	7.8	5.0	6.4	4.0	6.4	7.5	060	13	11.5	26	3.7	0.1	Cloudy, ocnl rain. Fair late		
DN	29	1020.8	7.7	3.5	5.6	1.5	6.3	7.4	340	10	6.8	18	3.5	6.4	Fair, slt shwr am. Ocnl fine pm. Cloudy late pm		
JE	30	1019.6	10.5	4.9	7.7	-2.6	6.0	7.4	170	13	10.0	24	2.3	NIL	Cloudy, ocnl rain or drzl am. Mist pm		
ED	31	1022.0	10.0	7.1	8.6	3.9	6.5	7.4	340	08	9.0	20	TR	3.3	Cloudy, ocnl fair, dew. Slt shwrs. Fair pm. Cloudy later		
MEAN		1008.6	9.0	4.9	7.0	2.1	6.3	7.7	E	12.7	13.2	TOTAL	210.0	78.8			
10 YEAR AVE. 1971-00		1017.1	8.4	4.7	6.6	2.7	6.7	8.0	W	14.4	14.7	////	89.2	57.9			
EXTREMES ARE IN BOLD TYPE	NUMBER OF DAYS WITH	RAIN ≥0.2mm	WET ≥1.0mm	SNOW/ SLEET	HAIL	THNDER	LGHTNG	AIR FROST	GROUND FROST	FOG	FOG 9a.m.	GALE	NO SUN	TOTALS FOR YEAR TO DATE			
		22	19	0	4	3	3	0	8	3	1	0	7				
RECORDS FROM JANUARY 1947														RAINFALL	210.0 mm	SUNSHINE	78.8 hrs
WETTEST DAY	32.3mm	DRIEST MONTH		15.4mm	LOWEST MIN		-7.8°C	WARMEST MNTH		8.5°C	SUNNIEST MNTH		112.8hrs	RAIN DAYS	22	SUNLESS DAYS	7
DAY/YEAR	5th/1959	YEAR		1992	DAY/YEAR		20th/1963	YEAR		1993	YEAR		1998	WET DAYS	19		
WETTEST MNTH	190.4mm	HIGHEST MAX		13.3°C	LOWEST GRASS		-10.0°C	COLDEST MONTH		1.5°C	DULLEST MNTH		26.0hrs				
DAY/YEAR	1988	DAY/YEAR		4th/1948	DAY/YEAR		29th/1947	YEAR		1963	YEAR		1966				

METEOROLOGICAL OBSERVATIONS GUERNSEY AIRPORT FEBRUARY 2001

LY	DATE	BAROMETER	TEMPERATURE deg C						WIND				RAIN	SUN	WEATHER		
		mb	AIR			GRASS	SOIL		DIR'N	SPEED(knots)							
			at 9a.m.	MAX	MIN		MEAN	MIN		30cm	100cm	9a.m.				9a.m.	MEAN
U	1	1030.7	7.2	3.8	5.5	1.0	6.8	7.4	130	08	9.2	19	3.2	2.4	Cloudy bec fair. Cloud late am. Slt rain evng. Rain & drzl later		
RI	2	1017.9	10.4	5.7	8.1	4.5	6.6	7.4	290	11	10.9	20	0.7	3.0	Rain, drzl & mist. Fog patches am. Fair around midday. Slt shwr		
AT	3	1009.2	10.5	8.1	9.3	6.1	7.0	7.4	250	17	13.5	28	7.4	NIL	Cloudy. Ocnl slt rain bec drzl & mist. Fog patch. Rain pm. Fog evng		
JN	4	1001.6	10.6	9.4	10.0	<u>8.0</u>	7.5	7.5	190	14	18.4	38	7.8	0.1	Rain, drzl & mist. Fog patch early. Tempo rain. Shwrs pm. Hvy shwr		
ON	5	998.6	11.1	8.8	10.0	6.7	7.8	7.7	200	15	17.3	35	9.2	NIL	Cloudy, shwrs bec rain. Fog patches midday & evng. Mod rain		
JE	6	994.9	12.1	8.3	10.2	6.7	8.1	7.8	200	<u>19</u>	17.3	39	0.1	5.4	Rain & drzl early. Hvy shwr mid am, hail bec fair.		
ED	7	998.9	11.4	8.9	10.2	5.7	8.0	8.0	170	14	10.8	23	25.7	4.4	Fair, ocnl cloudy. Slt rain evng. Mod rain later		
U	8	996.2	9.5	5.9	7.7	6.3	<u>8.2</u>	8.0	320	10	11.9	29	<u>32.5</u>	0.1	Mod or hvy rain & mist am, cloudy. Rain evng, tempo heavy rain		
RI	9	1019.3	7.8	2.9	5.4	1.7	7.5	<u>8.1</u>	340	08	8.7	30	0.9	5.5	Heavy rain early. Bec fair. Cloudy late pm		
AT	10	1024.7	11.0	5.3	8.2	0.9	7.0	<u>8.1</u>	160	18	14.5	30	0.9	NIL	Cloudy, ocnl rain or drzl am		
JN	11	1030.2	<u>12.5</u>	<u>10.2</u>	<u>11.4</u>	7.7	7.5	8.0	190	09	12.9	26	0.1	0.1	Cloudy, tempo slt drzl am. Tempo fair pm		
ON	12	1020.7	11.2	7.7	9.5	7.2	8.1	8.0	200	17	<u>18.5</u>	<u>45</u>	0.4	NIL	Cloudy. Rain, drzl & mist late am. Fine late pm		
JE	13	1037.5	8.6	5.6	7.1	2.5	7.7	<u>8.1</u>	030	07	12.3	24	NIL	5.7	Fine bec cloudy mid am. Bec fine pm		
ED	14	1032.0	9.3	5.0	7.2	2.5	7.2	<u>8.1</u>	060	10	12.8	24	NIL	<u>9.0</u>	Mainly fine		
U	15	1031.8	10.3	3.9	7.1	<u>-4.4</u>	6.9	<u>8.1</u>	—	<u>00</u>	4.0	11	NIL	7.8	Fine, dew. Slt hoar frost. Shallow fog. Ocnl cloudy. Haze		
RI	16	1034.2	9.1	3.0	6.1	-3.3	6.8	8.0	010	08	7.7	20	NIL	3.2	Fair or fine, dew bec cloudy. Fair midday. Fine evng		
AT	17	<u>1042.8</u>	8.4	4.3	6.4	-0.9	6.8	7.9	020	03	8.0	19	NIL	6.9	Fair ocnl cloudy, dew. Tempo fine		
JN	18	1041.7	8.4	3.8	6.1	2.9	6.6	7.9	070	07	9.1	21	NIL	5.0	Cloudy bec fair		
ON	19	1041.9	8.1	3.0	5.6	-3.2	6.4	7.7	010	03	6.0	16	0.2	6.9	Fair, dew. Slt hoar frost. Ocnl cloudy. Slt rain late		
JE	20	1037.7	9.7	6.1	7.9	0.6	6.5	7.7	080	12	<u>3.9</u>	12	TR	0.1	Cloudy, slt rain early. Mist or haze. Ocnl fair evng. Dew		
ED	21	1034.1	10.6	5.0	7.8	-1.6	7.0	7.7	290	07	7.9	16	TR	1.4	Fine, dew bec cloudy. Slt drzl am. Ocnl fair early pm. Mist evng		
U	22	1026.5	10.9	7.3	9.1	3.3	7.4	7.7	270	08	10.7	21	TR	1.3	Fair to cloudy. Ocnl mist & dew am. Slt drzl early pm. Ocnl fair evng		
RI	23	1015.4	9.1	5.5	7.3	4.0	7.6	7.7	330	14	14.0	25	TR	6.4	Cloudy bec fair.		
AT	24	1013.4	5.7	2.2	4.0	1.2	6.9	7.8	360	12	10.9	25	1.9	3.8	Fair ocnl cloudy. Slt shwrs. Snow pellets pm, Slt snow shwr evng		
JN	25	1017.4	5.7	<u>0.4</u>	<u>3.1</u>	-2.8	5.9	7.9	010	11	10.3	27	TR	8.4	Sleet/snow showers early then fair to fine. Dry air. Snow lying <0.5cm		
ON	26	1006.5	6.1	2.6	4.4	-3.1	5.7	7.6	190	<u>19</u>	12.9	40	10.8	NIL	Cloudy. Slt rain am. Hvy rain early pm. Shwrs evng, small hail		
JE	27	<u>986.5</u>	6.0	2.2	4.1	0.7	5.7	7.4	—	<u>00</u>	5.7	25	8.2	NIL	Cloudy. Shwr or rain. Snow pellets. Sleet shwrs evng		
ED	28	993.9	<u>5.1</u>	1.5	3.3	0.3	<u>5.5</u>	<u>7.3</u>	360	12	11.8	25	3.2	0.1	Cloudy. Slt rain early. Shwrs late am. sleet shwrs pm. T&L late evng.		
MEAN		1019.2	9.2	5.2	7.2	2.2	7.0	7.8	S	10.5	11.1	TOTAL	113.2	87.0			
30 YEAR AVE. 1971-00		1017.0	8.2	4.4	6.3	2.5	6.4	7.3	SW	13.4	13.3	////	76.5	78.4			
EXTREMES ARE IN	NUMBER OF DAYS	RAIN ≥0.2mm	WET ≥1.0mm	SNOW/ SLEET	HAIL	THNDER	LGHTNG	AIR FROST	GROUND FROST	FOG	FOG 9a.m.	GALE	NO SUN	TOTALS FOR YEAR TO DATE			
BOLD TYPE	WITH	15	10	4	6	1	1	0	7	6	0	0	6				
RECORDS FROM JANUARY 1947														RAINFALL	323.2 mm	SUNSHINE	165.8 hrs
VETTEST DAY DAY/YEAR	59.0mm 18th/1978	DRIEST MONTH YEAR	4.8mm 1965	LOWEST MIN DAY/YEAR	-7.2°C 21st/48,7th/91	WARMEST MNTH YEAR	9.0°C 1990	SUNNIEST MNTH YEAR	140.9hrs 1959	RAIN DAYS	37	SUNLESS DAYS	13				
ETTEST MNTH DAY/YEAR	182.8mm 1978	HIGHEST MAX DAY/YEAR	15.0°C 29th/1948	LOWEST GRASS DAY/YEAR	-11.1°C 12th/1978	COLDEST MNTH YEAR	1.5°C 1986	DULLEST MNTH YEAR	36.1hrs 1976	WET DAYS	29						

METEOROLOGICAL OBSERVATIONS GUERNSEY AIRPORT MARCH 2001

DY	DATE	BAROMETER	TEMPERATURE deg C						WIND				RAIN	SUN	WEATHER
			AIR			GRASS	SOIL		DIR'N	SPEED(knots)					
			mb												
		at 9a.m.	MAX	MIN	MEAN	MIN	30cm	100cm	9a.m.	9a.m.	MEAN	MAX	mm	hrs	
HU	1	999.3	5.4	1.8	3.6	0.8	5.2	7.3	010	08	8.0	20	TR	5.7	Cloudy, slt shwrs. Sleet or hail, bec fair
RI	2	998.8	6.0	1.7	3.9	-3.4	5.0	7.1	080	14	14.1	33	TR	7.2	Fair, ocnl cloudy. Sleet shwrs early & late
AT	3	994.1	4.7	1.9	3.3	1.8	4.9	6.9	080	16	14.3	25	7.4	NIL	Cloudy, sleet shwr early. Haze. Rain evng. Ocnl hvy sleet
JN	4	993.4	5.8	2.2	4.0	0.9	4.8	6.8	030	10	6.7	20	0.1	0.2	Rain & drzl early. Ocnl showery rain or sleet am. Haze. Fine late
DN	5	1014.6	8.5	2.0	5.3	-3.3	4.9	6.7	110	10	9.6	22	NIL	7.1	Fair, slt hoar frost. Ocnl haze. Ocnl cloudy
JE	6	1009.7	13.4	6.5	10.0	3.8	5.4	6.7	090	12	13.8	33	5.9	2.0	Mainly cloudy. Hvy rain evng . Fine later
ED	7	1006.7	13.0	9.9	11.5	7.7	6.5	6.7	190	09	9.4	22	TR	3.9	Fine, dew bec fair to cloudy.
HU	8	999.6	12.3	8.7	10.5	7.2	7.4	6.9	180	10	9.3	21	4.3	4.7	Cloudy, slt shwr early. Tempo mist am. Ocnl fair. Hvy shwr pm
RI	9	1002.6	11.1	8.9	10.0	6.7	7.9	7.1	230	13	11.6	24	6.4	0.4	Mist. Slt shwrs am. Hvy shwr early pm. Fog patch. Mist. Fog later
AT	10	1002.0	11.0	9.4	10.2	8.3	8.2	7.4	220	14	13.7	27	7.2	NIL	Cloudy. Rain or drzl,ocnl thick fog bec mist.Tempo rain.Thick fog late.
JN	11	1005.5	11.2	8.6	9.9	9.1	8.5	7.5	180	09	11.2	23	11.3	NIL	Rain, drzl & thick fog. Tempo hvy rain early pm. Fog patches. Rain
DN	12	1006.3	10.0	5.7	7.9	2.7	8.4	7.9	220	13	14.3	39	10.2	6.4	Fair. Slt shwrs late am. Fair to cloudy pm. Shwrs. Hvy rain & hail late
JE	13	1002.1	11.2	5.7	8.5	3.0	7.8	8.0	270	24	18.8	46	1.7	5.9	Cloudy, hvy shwrs early bec fair. Mainly cloudy pm, slt rain. Fine late
ED	14	1011.9	10.3	7.2	8.8	3.7	7.8	8.0	270	08	12.7	30	9.6	NIL	Fine bec cloudy. Rain mid am. Rain & drzl pm. Mist or fog
HU	15	1009.6	11.4	8.9	10.2	8.4	8.1	8.0	200	04	8.1	24	0.3	0.3	Cloudy, slt rain or drzl. Fog patches am. Tempo fair early pm. Cloudy
RI	16	1004.6	11.8	8.4	10.1	5.5	8.4	8.0	080	13	10.2	31	6.5	0.1	Fair bec cloudy. Rain pm. Tempo hvy rain evng. T&L. Fog patches
AT	17	1000.5	9.7	8.1	8.9	4.9	8.6	8.2	190	06	6.7	14	11.0	0.7	Fair, dew bec cloudy. Rain & drzl late am. Cloudy pm. Hvy shwr evng
JN	18	996.2	8.6	5.3	7.0	2.5	8.4	8.2	050	13	9.1	27	0.1	NIL	Cloudy, rain. Tempo hvy rain mid am. Cloudy. Fair later
DN	19	1014.8	6.2	2.4	4.3	-2.8	7.6	8.3	090	10	12.6	32	15.9	NIL	Fair bec cloudy. Slt rain pm. Tempo mod rain evng
JE	20	1002.3	11.5	4.5	8.0	3.0	7.0	8.2	100	15	12.3	29	21.6	NIL	Rain. Tempo hvy rain am.. Rain, drzl & fog patches pm. Hvy rain late
ED	21	997.7	13.4	9.5	11.5	7.4	7.7	8.1	240	17	12.4	27	23.4	4.1	Hvy rain & thick fog early, bec ocnl fair. Cloudy by evng. Hvy rain later
HU	22	1001.0	12.3	7.8	10.1	6.1	8.5	8.1	250	06	9.3	24	16.4	1.3	Hvy rain & mist, bec drzl & thick fog. Ocnl fair pm. Rain & thick fog late
RI	23	997.5	12.7	8.8	10.8	8.3	8.8	8.2	230	17	13.6	32	1.6	7.8	Hvy rain & thick fog, bec fair. Hvy shwr later
AT	24	999.6	11.5	8.0	9.8	4.1	9.1	8.5	120	06	11.2	27	TR	0.3	Cloudy, slt shwr. Fog patches am. Cloudy pm
JN	25	1002.5	8.9	6.4	7.7	6.5	8.9	8.5	030	10	9.6	22	TR	1.7	Cloudy, slt shwr am. Ocnl fair mid pm. Cloudy
DN	26	1008.5	7.7	5.3	6.5	4.4	8.5	8.6	100	09	10.3	21	2.1	NIL	Cloudy. Slt rain or drzl am. Mod drzl late pm
JE	27	1003.6	11.3	6.6	9.0	5.3	8.1	8.6	150	14	12.9	30	10.0	3.1	Rain or drzl. Tempo hvy rain. Hvy rain & mist late am. Fair. Shwrs
ED	28	995.2	10.5	6.5	8.5	4.3	8.5	8.6	240	13	13.8	31	5.5	5.5	Mainly cloudy, shwrs. Lghtng am. Fair. Hvy shwr evng
HU	29	997.3	10.5	6.0	8.3	2.9	8.4	8.6	280	09	14.2	29	0.8	8.5	Fair or fine. Ocnl cloudy, hvy shwrs. Fair pm
RI	30	1015.3	11.6	6.4	9.0	1.8	8.3	8.6	270	08	8.7	21	0.2	5.3	Fine bec fair, ocnl cloudy. Slt rain late evng
AT	31	1018.9	13.6	8.9	11.3	7.4	8.7	8.6	200	12	11.4	22	0.1	5.7	Cloudy, drzl & thick fog early bec fair. Cloudy by evng. Slt rain later
MEAN		1003.6	10.2	6.4	8.3	4.2	7.6	7.8	E	11.4	11.4	TOTAL	179.6	87.9	
30 YEAR AVE. 1971-00		1016.7	9.6	5.2	7.4	2.7	7.5	7.8	W	12.9	12.6	////	66.7	126.1	
EXTREMES ARE IN BOLD TYPE	NUMBER OF DAYS WITH	RAIN	WET	SNOW/ SLEET	HAIL	THNDER	LGHTNG	AIR FROST	GROUND FROST	FOG	FOG 9a.m.	GALE	NO SUN	TOTALS FOR YEAR TO DATE	
		≥0.2mm	≥1.0mm												
		22	19	4	3	1	3	0	3	12	2	0	8		
RECORDS FROM JANUARY 1947															
VETTEST DAY	30.0mm	DRIEST MONTH	2.7mm	LOWEST MIN	-2.2°C	WARMEST MNTH	10.3°C	SUNNIEST MNTH	206.1hrs	RAINFALL 502.8 mm SUNSHINE 253.7 hrs					
DAY/YEAR	28th/1960	YEAR	1961	DAY/YEAR	10th/11th/1958	YEAR	1957	YEAR	1973	RAIN DAYS 59 SUNLESS DAYS 21					
ETTEST MNTH	160.2mm	HIGHEST MAX	19.4°C	LOWEST GRASS	-9.4°C	COLDEST MNTH	4.4°C	DULLEST MNTH	67.4hrs	WET DAYS 48					
DAY/YEAR	1947	DAY/YEAR	29th/1965	DAY/YEAR	3rd/1965	YEAR	1962	YEAR	1964						

METEOROLOGICAL OBSERVATIONS GUERNSEY AIRPORT APRIL 2001

DATE	BAROMETER	TEMPERATURE deg C						WIND				RAIN	SUN	WEATHER			
		mb	AIR			GRASS	SOIL		DIR'N	SPEED(knots)							
			at 9a.m.	MAX	MIN		MEAN	MIN		30cm	100cm				9a.m.	9a.m.	MEAN
1	1022.7	14.2	9.5	11.9	8.8	9.5	8.7	170	09	9.1	19	NIL	9.0	Cloudy, slt drzl early. Bec fair. Adj fog late am			
2	1010.2	13.3	9.3	11.3	7.6	10.0	9.0	140	08	9.1	23	7.7	0.3	Fine, dew bec cloudy.Slt shwr late am.Rain pm.Tempo hvy rain evng.			
3	1015.8	12.7	7.4	10.1	4.4	9.8	9.2	190	12	12.1	38	6.8	5.8	Slt shwr early. Fine bec fair. Cloudy pm. Hvy shwr. Rain late evng			
4	1006.9	11.1	6.3	8.7	4.8	9.7	9.3	270	19	16.8	35	2.5	9.7	Hvy rain early bec fair. Shwrs mid am, hail. Fair or fine pm			
5	1014.4	11.7	7.1	9.4	3.6	9.3	9.2	200	19	16.3	32	7.0	0.1	Fine bec cloudy, shwrs. Tempo hvy rain am, mist. Fog patches pm			
6	1006.5	11.7	7.6	9.7	8.3	9.3	9.3	180	12	16.0	35	5.5	1.4	Mist. Tempo hvy rain mid am. Drzl & fog. Fair by evng. Hail late			
7	997.0	10.8	5.5	8.2	3.4	9.1	9.3	180	16	18.5	36	0.9	4.8	Shwrs early, hail. Rain mid am. Fair pm, cloudy by evng			
8	1024.0	11.2	6.6	8.9	3.7	8.8	9.2	300	10	14.2	29	3.6	4.3	Fine. Cloudy by midday. Slt rain & drzl evng. Mod drzl & rain later. Fog.			
9	1018.3	11.3	9.8	10.6	8.5	9.1	9.2	250	16	17.0	28	0.4	0.6	Cloudy. Rain or drzl & ocnl fog am. Tempo slt drzl pm. Ocnl fair evng			
10	1017.8	12.3	8.9	10.6	6.5	9.4	9.2	290	19	16.7	30	TR	3.2	Cloudy, slt shwrs am. Tempo fair late am. Mainly fair by evng			
11	1028.8	11.0	6.5	8.8	5.1	9.3	9.2	360	10	8.7	19	NIL	10.0	Fine bec fair, ocnl cloudy am. Cloudy late pm			
12	1032.3	11.0	6.3	8.7	0.6	9.4	9.4	310	03	4.1	11	TR	2.1	Cloudy. Tempo dry air midday. Slt rain late evng			
13	1031.4	10.4	7.2	8.8	6.0	9.4	9.4	040	03	5.3	16	TR	0.6	Cloudy. Ocnl slt rain am. Ocnl fair early pm			
14	1031.6	10.1	6.3	8.2	4.9	9.2	9.4	190	08	9.5	21	0.1	0.6	Cloudy. Tempo drizzle late evng			
15	1017.4	11.6	8.7	10.2	7.2	9.4	9.4	280	18	16.1	28	0.1	3.0	Cloudy. Slt drzl & rain late am. Fair by evng			
16	1020.8	10.4	6.6	8.5	4.0	9.2	9.4	010	10	8.1	24	NIL	10.7	Fine bec fair. Tempo cloudy late am			
17	1023.7	12.0	6.1	9.1	-1.7	9.3	9.5	150	05	9.6	24	TR	9.5	Fair ocnl cloudy. Cloudy evening, slight showers			
18	1013.2	9.6	5.4	7.5	5.3	9.4	9.5	010	13	12.4	29	0.4	9.8	Cloudy, slt rain early bec fair. Dry air pm. Cloudy late evng, shwr			
19	1015.7	8.9	3.5	6.2	-0.2	9.1	9.6	360	11	9.0	21	TR	11.9	Cloudy early, slt shwrs bec fair or fine. Dry air. Slt shwr evng, lghtng			
20	1016.4	9.2	4.7	7.0	1.6	8.8	9.5	350	13	11.4	24	NIL	10.2	Fair. Dry air pm. Tempo cloudy pm			
21	1018.1	8.6	4.8	6.7	2.1	8.6	9.5	350	10	7.3	20	0.2	10.3	Fair. Tempo dry air pm. Cloudy late pm			
22	1004.5	8.9	5.0	7.0	-0.1	8.6	9.4	160	14	11.7	26	3.7	NIL	Cloudy. Rain or drizzle			
23	1004.3	13.1	5.4	9.3	1.6	8.7	9.3	270	07	6.6	16	3.5	10.6	Cloudy, slt rain early bec fine. Fair late am. Cloudy by evng			
24	999.0	13.4	7.6	10.5	5.9	9.5	9.3	180	11	11.8	27	1.3	6.9	Cloudy, rain am. Mod shwr late am. Fine pm, bec fair late			
25	1002.1	12.4	8.2	10.3	5.6	9.8	9.4	200	18	16.4	36	6.8	5.0	Cloudy, ocnl fair. Slt shwrs early. Mod shwrs late am. Hvy shwr evng			
26	1016.5	12.5	7.7	10.1	6.4	9.8	9.6	230	12	12.3	32	13.0	5.4	Cloudy, hvy shwrs early bec fine. Cloudy late am. Rain pm.Mist evng			
27	1014.0	13.1	9.5	11.3	8.2	10.0	9.7	220	05	9.8	26	1.7	1.9	Cloudy. Rain early. Fog patch. Mist, tempo drzl			
28	1011.2	13.0	9.0	11.0	7.9	10.4	9.8	250	16	14.0	26	10.6	7.9	Cloudy, rain & drzl. Fog patch early. Bec fair. Slt shwrs pm			
29	1003.9	10.1	6.3	8.2	5.3	10.3	9.8	200	08	7.5	26	TR	0.3	Cloudy, ocnl hvy shwrs. Hail early. Slt shwrs pm			
30	1010.8	11.8	4.7	8.3	-0.4	9.9	9.9	350	10	9.5	25	13.1	8.0	Fair or fine bec cloudy early pm. Slt rain evng			
MEAN	1015.0	11.4	6.9	9.1	4.5	9.4	9.4	S	11.5	11.6	TOTAL	88.9	163.9				
AR AVE. 971-00	1015.3	11.2	6.2	8.7	3.5	9.3	9.1	NE	12.6	11.9	////	51.1	183.2				
EMES RE IN TYPE	NUMBER OF DAYS WITH	RAIN ≥0.2mm	WET ≥1.0mm	SNOW/ SLEET	HAIL	THNDER	LGHTNG	AIR FROST	GROUND FROST	FOG	FOG 9a.m.	GALE	NO SUN				
		18	14	0	5	0	1	0	4	6	2	0	1				
RECORDS FROM JANUARY 1947														RAINFALL	591.7 mm	SUNSHINE	417.6 hrs
ST DAY	27.9mm	DRIEST MONTH		2.9mm	LOWEST MIN		-1.4°C	WARMEST MNTH		10.9°C	SUNNIEST MNTH		280.4hrs	RAIN DAYS	77	SUNLESS DAYS	22
Y/YEAR	3rd/2000	YEAR		1980	DAY/YEAR		11th/1986	YEAR		1961	YEAR		1984	WET DAYS	62		
F MNTH	130.4mm	HIGHEST MAX		23.0°C	LOWEST GRASS		-7.0°C	COLDEST MNTH		6.4°C	DULLEST MNTH		122.2hrs				
Y/YEAR	1966	DAY/YEAR		22nd/1984	DAY/YEAR		5th/1990	YEAR		1986	YEAR		1981				

METEOROLOGICAL OBSERVATIONS GUERNSEY AIRPORT MAY 2001

Y	DATE	BAROMETER	TEMPERATURE deg C					WIND				RAIN	SUN	WEATHER				
			mb	AIR			GRASS	SOIL		DIR'N	SPEED(knots)							
				at 9a.m.	MAX	MIN		MEAN	MIN		30cm				100cm	9a.m.	9a.m.	MEAN
IE	1	1011.1	10.4	6.7	8.6	5.5	10.0	10.0	030	25	21.0	43	4.2	0.8	Cloudy, heavy rain mid am bec mod rain. Rain & drzl pm. Fair evng			
ED	2	1020.2	10.1	8.7	9.4	7.0	9.6	9.9	030	11	10.5	23	TR	0.1	Fair bec cloudy, mist. Slt rain am. Cloudy, haze pm			
IU	3	1010.2	13.6	8.9	11.3	7.1	9.8	9.9	360	09	8.6	23	TR	1.5	Cloudy, haze. Dry air early pm. Tempo fair			
RI	4	1013.4	11.3	6.4	8.9	7.3	9.9	9.9	010	15	12.0	26	NIL	12.4	Cloudy, haze early. Slt rain. Fair or fine from mid am			
AT	5	1021.0	11.7	5.7	8.7	-0.9	9.8	9.9	030	13	9.3	28	NIL	13.3	Fine, dew. Ocnl fair. Ocnl dry air pm			
IN	6	1024.6	10.6	6.3	8.5	3.0	9.9	10.0	030	12	12.3	25	TR	2.8	Fine bec fair. Cloudy by late am. Slt shwrs			
ON	7	1027.3	12.5	7.9	10.2	5.2	9.5	9.9	040	10	10.8	24	NIL	5.7	Fair bec cloudy. Bec fine pm. Dew late evng			
IE	8	1028.6	12.4	8.4	10.4	2.5	9.6	9.9	030	12	11.4	24	NIL	13.7	Fine, dew early. Ocnl fair			
ED	9	1020.1	11.8	7.8	9.8	4.6	9.8	9.9	070	15	13.1	26	TR	0.6	Fine bec fair mid am then cloudy. Haze. Tempo slt rain pm			
IU	10	1015.8	17.4	9.5	13.5	6.4	10.0	9.9	040	07	6.1	14	0.2	2.9	Cloudy, mist bec haze. Ocnl fair. Shwrs pm			
RI	11	1020.0	18.8	11.9	15.4	9.0	11.0	10.0	120	04	5.1	12	NIL	11.5	Cloudy, haze bec fair. Fog patch late am. Adj fog pm			
AT	12	1018.2	23.8	11.8	17.8	9.4	12.1	10.3	090	09	10.8	26	TR	13.7	Fine, haze & dew early then dry air. Fair evng bec cloudy later			
JN	13	1009.9	16.9	10.1	13.5	11.6	12.7	10.5	260	13	9.9	23	NIL	6.1	Cloudy ocnl fair. Slt rain am. fog patch. Fair pm. Fine later, dew			
ON	14	1009.6	15.9	8.4	12.2	1.0	12.2	10.9	360	05	4.4	13	NIL	12.2	Fine, dew bec fair. Tempo cloudy am. Cloudy late			
JE	15	1004.4	16.5	9.0	12.8	4.3	12.5	11.1	130	04	5.7	21	6.9	6.5	Cloudy bec fair. Bec cloudy again pm. Rain or shwrs evng			
ED	16	1001.7	14.2	10.7	12.5	9.4	12.7	11.2	240	12	14.5	27	2.7	8.7	Cloudy, slt shwrs. Fine pm. Fair late evng. Cloudy late pm			
IU	17	1008.5	12.7	7.1	9.9	4.9	12.5	11.4	250	19	19.0	40	TR	12.9	Cloudy, hvy shwr early bec fair. Slt shwrs am. Cloudy late pm			
RI	18	1022.7	13.9	9.4	11.7	6.1	12.2	11.5	310	13	11.9	23	NIL	14.0	Cloudy bec fair then fine. Dew late pm			
AT	19	1027.3	14.8	7.6	11.2	1.3	12.3	11.6	300	05	6.5	13	NIL	12.3	Fine, dew bec fair. Tempo cloudy am. Dew late evening			
JN	20	1027.0	17.3	8.5	12.9	3.1	12.5	11.6	050	08	9.1	22	NIL	14.1	Fair, dew bec fine. Ocnl dry air			
ON	21	1023.6	15.6	10.0	12.8	6.9	12.8	11.7	050	20	17.1	34	NIL	14.3	Fine. Ocnl dry air. Fair evening			
JE	22	1020.7	15.6	10.3	12.9	7.7	12.7	11.9	060	17	15.1	33	NIL	13.0	Fine. Tempo haze am. Fair pm.			
ED	23	1022.8	18.6	11.1	14.9	8.4	12.9	11.8	040	08	10.0	25	NIL	14.1	Fair bec fine late am. Dry air pm			
IU	24	1022.6	19.1	11.1	15.1	7.8	13.2	11.9	030	13	10.5	21	NIL	10.4	Fair or fine, ocnl cloudy			
RI	25	1021.1	18.9	11.3	15.1	8.1	13.5	12.2	070	09	7.1	16	NIL	10.7	Fine bec fair. Haze. Adj fog late am. Cloudy by evng. Fog patches late			
AT	26	1022.3	16.0	10.7	13.3	11.1	13.9	12.3	180	04	6.4	13	TR	0.2	Cloudy, mist or fog am. Slt drzl late am. Cloudy pm, haze			
JN	27	1024.6	17.6	11.5	14.5	9.7	13.9	12.4	200	08	7.3	17	NIL	7.2	Cloudy, tempo fine early, dew. Mist. Fair pm			
IO	28	1025.3	19.2	11.1	15.1	11.3	14.1	12.6	200	08	9.2	21	TR	9.9	Fair, mist & dew bec thick fog. Fair late am. Thick fog late evng. Drzl			
JE	29	1025.5	18.1	11.7	14.9	11.7	14.5	12.8	330	06	5.5	16	NIL	12.5	Overcast, fog & slt drzl. Tempo thick fog bec fair. Adjacent fog			
ED	30	1020.8	17.7	10.7	14.2	3.9	14.7	12.9	320	03	7.5	18	NIL	14.5	Fine, dew. Shallow fog. Adj fog. Fog patches. Fair or fine pm			
IU	31	1022.1	15.9	11.3	13.6	8.5	14.7	13.1	300	14	12.2	26	NIL	13.7	Fair, dew. Ocnl cloudy early bec fine			
MEAN		1019.1	15.4	9.4	12.4	6.5	12.0	11.1	NE	10.7	10.3	TOTAL	14.0	286.3				
30 YEAR AVE. 1971-00		1015.7	14.4	8.7	11.6	6.0	12.6	11.4	NE	11.9	11.1	////	49.6	233.8				
EXTREMES ARE IN BOLD TYPE		NUMBER OF DAYS WITH	RAIN ≥0.2mm	WET ≥1.0mm	SNOW/ SLEET	HAIL	THUNDER	LGHTNG	AIR FROST	GROUND FROST	FOG	FOG 9a.m.	GALE	NO SUN	TOTALS FOR YEAR TO DATE			
			4	3	0	0	0	0	0	1	7	2	0	0				
RECORDS FROM JANUARY 1947															RAINFALL	605.7 mm	SUNSHINE	703.9 hrs
WETTEST DAY		40.4mm	DRIEST MONTH		4.1mm	LOWEST MIN		0.1°C	WARMEST MNTH		13.9°C	SUNNIEST MNTH		336.4hrs	RAIN DAYS	81	SUNLESS DAYS	22
DAY/YEAR		24th/1950	YEAR		1989	DAY/YEAR		2nd/1979	YEAR		1989	YEAR		1989	WET DAYS	65		
WETTEST MNTH		128.7mm	HIGHEST MAX		25.7°C	LOWEST GRASS		-5.6°C	COLDEST MNTH		9.9°C	DULLEST MNTH		136.9hrs				
DAY/YEAR		1994	DAY/YEAR		5th/1995	DAY/YEAR		5th/1979	YEAR		1984	YEAR		1981				

METEOROLOGICAL OBSERVATIONS GUERNSEY AIRPORT JUNE 2001

Y	DATE	BAROMETER	TEMPERATURE deg C					WIND				RAIN	SUN	WEATHER	
			mb	AIR			GRASS	SOIL		DIR'N	SPEED(knots)				
				at 9a.m.	MAX	MIN		MEAN	MIN		30cm				100cm
RI	1	1026.8	16.6	9.5	13.1	5.2	14.4	13.2	280	09	11.5	24	TR	7.2	Fine, dew bec cloudy mid am. Fair, ocnl cloudy pm. Fine, dew late
AT	2	1017.7	16.5	11.7	14.1	9.7	14.2	13.2	280	14	13.7	32	NIL	7.8	Fine, dew bec cloudy. Slt rain & drzl am. Fair or fine pm. Cloudy late
JN	3	1025.5	15.0	10.0	12.5	7.0	14.2	13.3	070	12	6.8	18	NIL	14.8	fair or fine. Dry air pm
DN	4	1027.5	17.4	8.8	13.1	0.7	14.1	13.3	180	04	3.3	10	NIL	15.0	Fine, tempo fair am. dry air
JE	5	1019.3	17.9	10.9	14.4	4.8	14.5	13.3	170	06	6.0	16	1.0	5.1	Fair bec cloudy mid am. Ocnl fair. Shwrs pm. Mod shwr evng, fog
ED	6	1016.8	16.2	12.3	14.3	11.3	14.6	13.4	280	15	14.4	29	1.4	4.4	Fog early. Cloudy. Fair around midday
HU	7	1015.1	13.2	10.7	12.0	9.8	14.4	13.4	250	08	9.3	27	1.2	0.1	Cloudy, rain or drzl am.
RI	8	1015.3	14.9	8.0	11.5	2.0	13.8	13.5	340	05	5.7	15	NIL	11.5	Cloudy bec fair late am. Fine, dry air pm
AT	9	1015.8	15.8	8.1	12.0	-0.9	13.8	13.4	310	03	6.4	13	NIL	10.7	Fine, dew early. Ocnl fair. Dry air pm
JN	10	1017.4	16.3	9.4	12.9	5.4	13.6	13.3	280	11	9.3	19	NIL	14.4	Fine, slt dew bec fair. Tempo cloudy am. Fine late am. Dy air pm
DN	11	1024.9	16.1	8.4	12.3	1.5	13.9	13.4	310	05	7.0	15	NIL	14.4	Fine, dew. Fair pm. Tempo dry air
JE	12	1021.2	17.6	9.8	13.7	1.4	14.2	13.4	130	03	4.2	13	NIL	6.6	Fair am, dew early. Bec cloudy pm. Fair evng
ED	13	1016.7	17.2	10.2	13.7	4.3	14.5	13.5	330	06	6.1	15	NIL	13.0	Fine, dew bec fair. Tempo cloudy am. bec fine pm, dew later
HU	14	1014.1	16.6	11.2	13.9	4.6	14.8	13.6	140	09	7.7	20	3.9	2.5	Fair, dew bec cloudy. Ocnl fair am. Rain pm. Fair late evng
RI	15	1008.0	18.2	12.8	15.5	10.0	14.6	13.6	180	08	10.3	22	4.1	4.8	Fair to cloudy. Shwrs pm. Tempo heavy shwrs
AT	16	1003.1	17.4	13.1	15.3	11.2	14.7	13.7	230	12	15.3	27	TR	8.3	Shwrs early. Fair late am, bec fine pm. Cloudy later, slt shwrs
JN	17	1016.4	16.2	12.9	14.5	11.7	14.8	13.8	310	10	11.4	22	NIL	5.3	Cloudy, slight shwrs early. Fair, ocnl cloudy pm
DN	18	1028.2	16.8	10.7	13.7	5.8	14.7	13.8	—	00	5.0	13	NIL	9.8	Fair, ocnl cloudy am, Fair pm
JE	19	1028.2	20.0	11.6	15.8	5.9	14.8	13.9	140	06	4.9	12	NIL	15.0	Fair. Dry air late am. bec fine pm
ED	20	1022.2	21.1	13.3	17.2	4.9	15.4	13.9	240	05	6.6	16	NIL	14.6	Fine. Dry air. Mist & dew late
HU	21	1020.2	18.8	13.7	16.3	11.4	15.9	14.1	340	05	5.8	12	NIL	13.0	Fine, mist & dew bec cloudy. Fine again mid am
RI	22	1017.9	20.0	10.7	15.4	3.8	16.2	14.3	340	02	5.4	15	NIL	15.4	Fine, dew early. Ocnl fair am
AT	23	1016.1	20.8	13.9	17.4	11.5	16.6	14.5	160	03	6.5	17	NIL	14.4	Fine, tempo fair am. Haze by evening. Fine, dew later
JN	24	1022.0	20.6	12.8	16.7	7.9	16.8	14.8	030	04	6.1	13	NIL	14.2	Fine, dew. Shallow fog. Tempo fog mid am. Fine, dew late
DN	25	1021.3	27.4	13.4	20.4	8.8	17.0	15.0	060	10	9.0	22	NIL	14.5	Fine, dew bec fair. Dry air. Bec fine pm
JE	26	1013.6	23.2	15.2	19.2	17.9	17.8	15.1	280	09	11.7	24	0.1	10.0	Fine, tempo dry air early. Fog late am. fair pm, adj fog. Cloudy evng
ED	27	1014.2	19.8	14.1	17.0	13.4	17.5	15.3	250	12	13.0	23	0.3	11.3	Cloudy, mist & drzl early bec fair. Adj fog. Fine pm, dew later
HU	28	1018.7	17.2	13.8	15.5	11.3	17.4	15.4	220	13	11.8	25	0.4	0.1	Fair, dew bec cloudy, ocnl slt rain. Tempo mist am. Fine later, dew
RI	29	1021.4	21.6	13.9	17.8	11.1	16.8	15.5	190	09	7.5	20	2.1	2.5	Fine, dew bec cloudy. Rain & drzl later
AT	30	1023.9	19.9	14.1	17.0	12.7	16.9	15.6	250	09	11.1	24	NIL	11.7	Hvy drzl & rain early. Tempo thick fog bec fair or fine
MEAN		1019.0	18.2	11.6	14.9	7.5	15.2	14.0	W	7.6	8.4	TOTAL	14.5	292.4	
30 YEAR AVE. 1971-00		1017.8	16.9	11.1	14.0	8.8	15.6	14.0	W	11.2	10.6	////	46.2	238.2	
EXTREMES ARE IN BOLD TYPE		NUMBER OF DAYS WITH	RAIN ≥0.2mm	WET ≥1.0mm	SNOW/ SLEET	HAIL	THNDER	LGHTNG	AIR FROST	GROUND FROST	FOG	FOG 9a.m.	GALE	NO SUN	TOTALS FOR YEAR TO DATE
			8	6	0	0	0	0	0	1	6	0	0	0	
RECORDS FROM JANUARY 1947															RAINFALL 620.2 mm SUNSHINE 996.3 hrs
WETTEST DAY		46.8mm	DRIEST MONTH		0.6mm	LOWEST MIN		5.4°C	WARMEST MNTH		16.7°C	SUNNIEST MNTH		355.3hrs	RAIN DAYS 89 SUNLESS DAYS 22
DAY/YEAR		16th/1970	YEAR		1976	DAY/YEAR		1st/1975	YEAR		1976	YEAR		1975	WET DAYS 71
WETTEST MNTH		129.7mm	HIGHEST MAX		30.8°C	LOWEST GRASS		-3.0°C	COLDEST MNTH		11.3°C	DULLEST MNTH		147.8hrs	
DAY/YEAR		1986	DAY/YEAR		26th/1976	DAY/YEAR		14th/1987	YEAR		1972	YEAR		1977	

METEOROLOGICAL OBSERVATIONS GUERNSEY AIRPORT JULY 2001

Y	DATE	BAROMETER	TEMPERATURE deg C					WIND				RAIN	SUN	WEATHER			
			mb	AIR			GRASS	SOIL		DIR'N	SPEED(knots)						
				at 9a.m.	MAX	MIN		MEAN	MIN		30cm				100cm	9a.m.	9a.m.
JN	1	<u>1029.9</u>	19.5	14.2	16.9	11.8	17.0	<u>15.6</u>	280	10	6.7	15	TR	0.9	Fine bec cloudy. Adj. Fog late am. Slt drzl early pm		
DN	2	1028.4	24.4	14.4	19.4	12.6	17.1	<u>15.6</u>	140	06	5.5	16	NIL	11.1	Cloudy, tempo fair. Shallow fog mid am. Fine late am. Ocnl adj. Fog		
JE	3	1017.4	27.5	17.7	22.6	15.5	17.9	15.7	140	08	8.4	21	0.1	11.7	Fine. Dry air late am. Fair evng bec cloudy. Slt shwrs. T&L		
ED	4	1007.0	21.9	15.3	18.6	14.9	18.4	15.8	230	09	8.0	19	8.5	3.1	Cloudy, lghtng early bec thick fog then mist. Ocnl fair pm. Rain later		
HU	5	1008.6	18.5	15.0	16.8	14.5	17.8	16.1	040	<u>02</u>	3.6	12	0.2	<u>0.4</u>	Rain & mist. Tempo hvy rain early. Ocnl fog. Tempo thick fog		
RI	6	1012.0	20.3	14.5	17.4	14.3	17.4	16.1	190	04	6.2	16	TR	6.5	Thick fog & drzl bec fog patches. Bec fair pm. Cloudy evng. mist		
AT	7	1008.5	18.1	15.0	16.6	13.9	17.4	16.0	290	12	13.5	25	0.3	1.0	Cloudy, fog patches & ocnl slt drzl or rain. Mist pm		
JN	8	1013.4	19.1	14.1	16.6	11.5	16.7	16.1	280	14	11.9	22	NIL	8.2	Cloudy, slt shwr mid am. Ocnl fair		
DN	9	1017.2	19.8	14.3	17.1	12.2	16.7	16.0	200	08	7.9	16	0.2	5.8	Cloudy. Ocnl fair pm. Slt rain evng		
JE	10	1009.9	18.0	14.5	16.3	14.5	17.3	15.9	230	15	14.7	<u>31</u>	0.1	2.2	Cloudy, slt rain or drzl. Fog patch. Tempo fair pm. Slt shwrs evng		
ED	11	1014.6	18.7	13.1	15.9	10.4	16.7	16.0	260	<u>18</u>	<u>15.9</u>	30	0.2	12.1	Mainly fair. Tempo slt shwrs		
HU	12	1013.5	18.4	13.6	16.0	10.7	16.7	16.0	240	08	11.3	26	TR	8.6	Fair bec cloudy slt rain mid am. Fair pm		
RI	13	1010.9	19.0	13.1	16.1	9.4	16.7	16.0	240	10	8.4	18	2.6	10.0	Fair ocnl cloudy. Slt shwrs. Funnel clouds am. Cloudy later		
AT	14	1006.9	18.3	12.0	15.2	7.2	16.9	16.0	280	08	8.9	21	0.1	11.8	Cloudy, slt rain. Hvy shwr mid am bec fair. Lghtng late pm		
JN	15	1017.3	18.1	<u>9.9</u>	<u>14.0</u>	4.3	16.6	16.0	280	10	7.5	17	NIL	13.7	Fine bec fair. Dry air pm.		
DN	16	1017.9	19.3	10.4	14.9	<u>3.1</u>	16.5	16.0	200	<u>02</u>	5.3	18	6.6	13.0	Fair bec fine, ocnl dry air. Cloudy evening. Slt rain later		
JE	17	999.3	<u>17.0</u>	13.4	15.2	11.9	17.1	15.9	140	15	15.2	<u>31</u>	<u>11.7</u>	1.3	Rain. Tempo hvy rain am. Mist. Fog patches late am. Tempo fair pm		
ED	18	<u>994.0</u>	18.4	13.2	15.8	11.7	<u>16.3</u>	16.0	320	10	10.5	24	1.2	11.5	Cloudy, shwry rain bec fair. Shwrs later		
HU	19	1008.7	19.3	13.2	16.3	10.5	16.6	16.0	330	14	14.0	25	NIL	<u>14.5</u>	Slt shower bec fair then fine. Dry air pm		
RI	20	1019.1	17.6	12.7	15.2	9.5	<u>16.3</u>	16.0	270	08	10.4	24	9.0	8.0	Fine bec fair. Bec cloudy pm. Rain, drzl & mist evening		
AT	21	1016.5	17.6	14.3	16.0	13.3	16.6	16.0	220	04	8.1	20	1.6	3.1	Rain & drzl, thick fog. Hvy rain mid am. Ocnl fog & drzl. Fair by evng		
JN	22	1018.9	18.9	14.6	16.8	13.0	16.7	15.9	240	06	6.3	11	0.1	4.1	Cloudy, ocnl mist am. Tempo slt rain. Ocnl fair pm		
DN	23	1020.9	18.0	12.0	15.0	8.7	16.6	15.9	340	06	6.5	16	NIL	13.4	Fine, dew. Tempo shallow fog. Mainly fair		
JE	24	1020.8	18.7	12.3	15.5	8.1	16.7	16.0	340	05	5.7	11	NIL	12.0	Fine, dew bec fair. Ocnl dry air. Tempo cloudy evng		
ED	25	1019.8	21.5	12.6	17.1	8.4	16.8	16.0	140	03	4.8	11	NIL	9.7	Fine, dew bec fair. Ocnl cloud mid am. Fair		
HU	26	1018.4	25.7	15.8	20.8	11.3	17.1	16.0	060	05	5.5	12	NIL	14.4	Fine. Dry air pm		
RI	27	1017.2	25.5	16.1	20.8	12.8	17.9	16.2	050	06	7.3	18	NIL	13.3	Fine bec fair. Ocnl haze. Dry air pm. Cloudy later		
AT	28	1021.9	26.5	17.2	21.9	13.9	18.1	16.2	080	08	8.9	18	NIL	13.2	Fair, ocnl cloudy early be fine. Dry air		
JN	29	1024.1	<u>28.4</u>	<u>18.0</u>	<u>23.2</u>	<u>16.0</u>	18.6	16.5	140	04	4.5	13	NIL	12.0	Fair, tempo cloudy mid am. bec fine pm		
DN	30	1026.1	21.5	16.8	19.1	12.1	<u>19.1</u>	16.7	360	08	6.7	14	NIL	13.6	Fine bec fair, mist & dew. Fair or fine		
JE	31	1026.0	22.2	15.4	18.8	11.9	19.0	<u>16.9</u>	310	09	7.8	16	NIL	11.3	Fine, dew bec fair. Tempo cloudy. Fog patches late		
MEAN		1015.6	20.5	14.2	17.3	11.4	17.2	16.0	W	8.2	8.6	TOTAL	42.5	275.5			
30 YEAR AVE. 1971-00		1018.4	19.2	13.2	16.2	11.0	17.6	16.1	W	10.7	10.3	////	37.6	248.1			
EXTREMES ARE IN BOLD TYPE	NUMBER OF DAYS WITH	RAIN ≥0.2mm	WET ≥1.0mm	SNOW/ SLEET	HAIL	THUNDER	LGHTNG	AIR FROST	GROUND FROST	FOG	FOG 9a.m.	GALE	NO SUN	TOTALS FOR YEAR TO DATE			
		11	7		0	1	3	0	0	10	1	0	0				
RECORDS FROM JANUARY 1947														RAINFALL	662.7 mm	SUNSHINE	1271.8 hrs
VETTEST DAY DAY/YEAR	59.0mm 6th/1969	DRIEST MONTH YEAR	3.9mm 1999	LOWEST MIN DAY/YEAR	8.3°C 8th/1954	WARMEST MNTH YEAR	19.4°C 1983	SUNNIEST MNTH YEAR	335.9hrs 1959								
ETTEST MNTH DAY/YEAR	120.2mm 1960	HIGHEST MAX DAY/YEAR	31.7°C 1st/1952	LOWEST GRASS DAY/YEAR	1.0°C 7th/1996	COLDEST MNTH YEAR	13.8°C 1954	DULLEST MNTH YEAR	167.7hrs 1972								
														RAIN DAYS	100	SUNLESS DAYS	22
														WET DAYS	78		

METEOROLOGICAL OBSERVATIONS GUERNSEY AIRPORT AUGUST 2001

Y	DATE	BAROMETER	TEMPERATURE deg C						WIND				RAIN	SUN	WEATHER			
			mb	AIR			GRASS	SOIL		DIR'N	SPEED(knots)							
				at 9a.m.	MAX	MIN		MEAN	MIN		30cm	100cm				9a.m.	9a.m.	MEAN
D	1	1023.9	22.9	14.7	18.8	6.4	18.8	17.0	100	08	9.0	22	0.6	11.6	Fine, shallow fog. Fog patches mid am bec fair. Shwrs & lghtng late			
U	2	1009.0	22.9	16.8	19.9	16.1	18.9	17.0	100	07	10.3	26	20.0	4.8	Mainly cloudy. Rain & lghtng. T&L mid am. T&L, hvy rain midday.			
RI	3	1012.7	19.9	15.8	17.9	15.1	18.6	17.2	300	11	11.7	23	1.1	3.2	Mainly cloudy. Tempo haze early. Slt shwrs			
T	4	1018.6	18.4	13.9	16.2	11.6	18.0	17.2	230	11	14.0	31	5.6	4.6	Cloudy, shwrs early. Ocnl fair. Hvy shwrs late			
N	5	1019.2	19.8	14.4	17.1	11.9	17.5	17.1	240	11	8.7	22	1.4	4.5	Fair to Cloudy. Rain & drzl late am. Ocnl fair pm. Drzl, fog late			
N	6	1014.4	18.7	15.6	17.2	14.9	17.8	17.0	250	15	15.0	28	9.8	2.0	Rain or drzl. Thick fog mid am. Cloudy, mist bec haze. Slt rain late			
E	7	1008.9	18.1	15.4	16.8	14.9	17.5	16.9	230	13	14.7	31	3.2	1.4	Cloudy. Hvy rain, drzl & fog early & mid am. Cloudy pm, ocnl fair evng			
D	8	1007.8	18.2	14.6	16.4	12.4	17.0	16.9	240	17	16.0	29	6.4	9.6	Fair, ocnl cloudy am. Shwrs.			
U	9	1013.7	17.9	12.8	15.4	11.4	16.8	16.7	290	16	15.6	31	NIL	10.9	Cloudy. Hvy shwrs mid am. bec fair. Fine pm			
RI	10	1026.9	18.2	12.8	15.5	9.4	16.4	16.7	290	09	9.1	19	NIL	13.5	Fine bec fair. Fine again pm. Dew late			
T	11	1029.3	19.5	12.9	16.2	8.6	16.6	16.6	210	09	7.5	16	NIL	8.1	Fair, dew bec cloudy. Fair pm bec fine			
N	12	1022.2	19.3	14.7	17.0	11.3	16.7	16.5	220	11	13.0	26	TR	5.1	Fine, dew bec fair. Cloudy pm. Dzl & mist evng. Fog patch late			
N	13	1017.8	20.1	15.3	17.7	14.1	16.9	16.5	250	13	8.9	19	NIL	9.6	Cloudy, mist bec fair. Cloudy again. Fine pm			
E	14	1013.9	26.0	14.8	20.4	9.6	17.4	16.4	100	04	5.6	22	TR	10.5	Fair bec cloudy. Fog patches bec fair. Dry air pm. Slt T&L late			
D	15	1012.1	23.0	16.0	19.5	15.2	18.1	16.6	260	08	8.6	21	3.8	7.1	Lghtng early bec fair. Tempo thick fog mid am. Fair late am. Rain evng			
U	16	1017.4	19.1	14.6	16.9	11.9	18.0	16.8	240	13	11.5	21	NIL	13.1	Cludy bec fair or fine. Slt shwr am			
RI	17	1018.5	19.2	14.7	16.9	10.7	17.6	16.8	190	07	8.3	23	1.8	7.8	Fine, dew bec fair. Gradu cloudy pm			
T	18	1008.3	20.6	16.4	18.5	14.7	17.7	16.8	140	09	9.5	27	8.9	2.6	Cloudy, rain. Hvy rain late am, early pm. Fair evng			
N	19	1003.4	18.6	15.5	17.1	14.9	17.5	16.8	230	16	14.4	27	0.1	1.2	Mainly cloudy. Shwrs early. Ocnl drzl am. Slt rain pm			
N	20	1015.9	19.0	14.0	16.5	10.2	17.2	16.8	250	09	7.5	16	TR	9.1	Cloudy bec fair. Tempo cloudy late am, shwr. Fine by evng			
E	21	1017.4	21.8	13.9	17.9	7.7	16.9	16.8	150	07	5.4	15	NIL	11.3	Fine, dew. Tempo fair mid am. Ocnl cloudy by evng			
D	22	1023.1	22.6	15.1	18.9	8.5	17.4	16.8	060	04	5.3	15	NIL	4.2	Cloudy, ocnl fair			
U	23	1019.4	22.1	15.6	18.9	14.3	17.6	16.8	190	07	5.9	14	TR	5.2	Cloudy bec haze. Adj fog. Ocnl fair. Fog patches evng, tempo thick fog			
RI	24	1018.1	21.6	15.0	18.3	12.6	18.0	16.8	190	05	4.2	10	TR	6.3	Thick fog bec fair pm. Adj fog. Thick fog evening			
T	25	1014.1	24.5	14.4	19.5	13.1	18.1	16.9	070	06	6.2	15	TR	8.0	Thick fog bec fair, haze. Ocnl fine. Fog patch pm. Haze			
N	26	1015.9	20.3	16.8	18.5	14.8	18.5	17.0	040	09	7.7	21	0.7	1.2	Mainly cloudy, haze. Slt shwrs. T&L late am, mod rain. Fog late evng			
N	27	1022.6	19.9	15.5	17.7	14.2	18.0	17.1	040	12	10.6	20	NIL	10.7	Cloudy, mist. Slt rain mid am bec fair or fine. Dew later			
E	28	1019.9	21.6	15.3	18.5	12.0	17.7	17.2	080	13	11.1	22	NIL	11.6	Fine, dew bec fair. Ocnl dry air			
D	29	1013.2	20.8	15.5	18.2	12.6	17.6	17.2	070	06	5.7	14	0.2	1.2	Fine, dew bec cloudy. Ocnl fair late am. Slt shwrs. Slt rain & haze later			
U	30	1012.8	19.0	14.3	16.7	10.1	17.5	17.1	320	09	10.6	24	0.4	3.3	Cloudy, mist. Tempo slt rain. Mod rain am. Bec fair pm			
RI	31	1015.3	18.8	14.5	16.7	11.4	17.0	17.0	320	15	14.3	26	TR	6.0	Fair ocnl cloudy. Slight showers			
MEAN		1016.3	20.4	14.9	17.7	12.1	17.6	16.9	SW	10.0	9.9	TOTAL	64.0	209.3				
0 YEAR AVE. 1971-00		1017.8	19.5	13.7	16.6	11.0	17.9	17.0	W	10.0	9.7	////	45.8	235.0				
EXTREMES ARE IN BOLD TYPE		NUMBER OF DAYS WITH	RAIN ≥0.2mm 14	WET ≥1.0mm 10	SNOW/ SLEET 0	HAIL 0	THNDER 3	LGHTNG 4	AIR FROST 0	GROUND FROST 0	FOG FOG 9a.m. 10	FOG 9a.m. 1	GALE 0	NO SUN 0	TOTALS FOR YEAR TO DATE			
RECORDS FROM JANUARY 1947															RAINFALL	726.7 mm	SUNSHINE	1481.1 hrs
ETTEST DAY DAY/YEAR		55.8mm 22nd/1973	DRIEST MONTH YEAR		3.8mm 1955	LOWEST MIN DAY/YEAR		9.2°C 28th/1986	WARMEST MNTH YEAR		19.1°C 1995	SUNNIEST MNTH YEAR		323.0hrs 1955	RAIN DAYS	114	SUNLESS DAYS	22
TTEST MNTH DAY/YEAR		122.0mm 1951	HIGHEST MAX DAY/YEAR		32.8°C 3rd/1990	LOWEST GRASS DAY/YEAR		0.8°C 11th/1981	COLDEST MNTH YEAR		14.3°C 1956	DULLEST MNTH YEAR		139.2hrs 1992	WET DAYS	88		

METEOROLOGICAL OBSERVATIONS GUERNSEY AIRPORT SEPTEMBER 2001

Y	DATE	BAROMETER	TEMPERATURE deg C					WIND				RAIN	SUN	WEATHER			
			mb	AIR			GRASS	SOIL		DIR'N	SPEED(knots)						
				at 9a.m.	MAX	MIN		MEAN	MIN		30cm				100cm	9a.m.	9a.m.
T	1	1022.6	19.0	12.8	15.9	7.7	16.8	16.8	350	06	8.5	17	0.1	11.5	Fair or fine. Cloudy late		
N	2	1019.3	17.8	14.8	16.3	11.9	17.0	16.8	260	11	10.9	19	2.1	NIL	Cloudy. Slt drzl mid am. Mist. Tempo slt rain pm. Mod rain late		
N	3	1016.0	18.3	14.3	16.3	12.0	16.9	16.7	330	09	11.3	20	1.6	6.7	Cloudy, rain early. Shower am bec fair late am		
E	4	1018.1	18.0	15.0	16.5	12.1	16.7	16.7	340	17	12.3	29	NIL	10.1	Cloudy. Shower early bec fair or fine. Ocnl dry air pm		
D	5	1025.3	18.9	12.8	15.9	9.1	16.4	16.6	330	05	9.8	19	TR	10.8	Fine am. Fair pm bec cloudy evening		
U	6	1019.7	18.2	14.5	16.4	14.7	16.8	16.6	310	12	11.7	21	0.2	6.2	Cloudy, ocnl drzl am. Fair pm, tempo dry air		
I	7	1023.5	18.3	12.4	15.4	8.0	16.5	16.5	280	11	13.2	26	TR	4.6	Mainly fair am. Cloudy pm, tempo slt drzl		
T	8	1019.3	19.3	14.6	17.0	13.3	16.6	16.5	290	18	16.6	29	NIL	2.6	Cloudy bec fair by evening		
N	9	1022.0	17.0	12.1	14.6	8.9	16.2	16.4	340	14	11.7	26	NIL	9.2	Fair, tempo cloudy pm. Ocnl dry air		
N	10	1023.2	17.2	11.2	14.2	6.4	15.8	16.4	310	07	7.4	17	NIL	10.6	Fine bec fair. Dry air late am		
E	11	1022.3	18.5	11.7	15.1	7.1	15.9	16.2	310	09	8.7	17	NIL	6.0	Fair bec cloudy. Tempo fair, bec fair pm		
D	12	1020.9	18.4	13.5	16.0	9.3	16.0	16.2	270	15	15.6	35	1.1	7.1	Fair bec mainly cloudy pm. Rain late		
U	13	1010.6	17.3	13.5	15.4	9.8	16.1	16.1	280	17	20.1	38	0.4	3.8	Cloudy, rain early. Ocnl fair. Shwrs pm		
I	14	1014.9	17.0	12.6	14.8	10.0	15.6	16.1	350	11	12.7	29	0.5	10.7	Fair or fine. Cloudy later		
T	15	1017.5	16.8	13.1	15.0	9.5	15.6	16.0	320	15	15.9	27	NIL	7.0	Cloudy, rain & drzl early. Ocnl fair, tempo dry air		
N	16	1022.5	16.9	13.0	15.0	10.0	15.5	16.0	330	15	14.8	26	TR	9.4	Mainly fair, ocnl dry air		
N	17	1023.0	16.9	11.9	14.4	8.5	15.3	15.9	020	11	11.3	25	0.3	9.8	Fair. Slt shwr am. Dry air pm. Cloudy evng		
E	18	1018.0	15.4	11.5	13.5	9.8	15.1	15.8	010	13	13.7	26	0.1	NIL	Fair bec cloudy. Tempo slt rain		
D	19	1011.8	16.8	13.9	15.4	12.2	15.1	15.7	320	15	13.8	26	1.2	0.4	Cloudy tempo slt rain. Tempo fair evng		
U	20	1015.5	17.4	11.3	14.4	11.8	15.2	15.6	350	05	6.6	16	NIL	8.0	Cloudy, slt rain. Shwr am bec fair. Fine pm, dew later		
I	21	1019.2	17.9	10.8	14.4	3.1	14.9	15.5	060	05	6.3	14	NIL	9.8	Fine, dew. Shallow fog mid am. Fair bec fine pm		
T	22	1017.0	17.7	11.0	14.4	5.6	14.9	15.5	080	09	9.8	19	NIL	9.5	Fine, slight dew early. Ocnl fair		
N	23	1013.5	15.3	13.2	14.3	10.3	15.0	15.3	040	14	12.0	23	0.2	3.6	Fine bec fair. Cloudy, slt shwr late am. Tempo fair evng. Slt shwrs		
N	24	1014.2	17.1	11.1	14.1	9.4	14.8	15.3	020	08	5.7	14	0.2	4.8	Cloudy, slt shwrs bec fair late am		
E	25	1017.4	17.6	11.0	14.3	2.0	14.6	15.3	—	00	5.0	17	3.5	6.4	Fair or fine, dew. Ocnl cloudy am, slt shwrs. Cloudy late evng		
D	26	1013.9	18.1	12.6	15.4	8.6	14.7	15.2	250	14	13.0	27	0.1	2.4	Cloudy, rain or drzl am. Fog patch mid am. Ocnl fair pm		
U	27	1015.5	19.4	15.5	17.5	13.0	15.1	15.1	200	10	9.1	19	NIL	8.2	Cloudy, slt drzl bec fair mid am. Dew late		
I	28	1009.7	19.5	15.0	17.3	9.5	15.4	15.3	150	11	9.2	22	1.6	6.0	Fair or fine, dew early. Cloudy by evng, slt shwrs. Lghtng		
T	29	1008.5	18.5	15.2	16.9	14.4	15.7	15.3	280	11	8.8	18	0.7	8.5	Cloudy, rain early bec fair by late am. Bec fine pm. Cloudy later		
N	30	1008.8	17.1	14.9	16.0	10.6	15.6	15.3	180	12	15.1	36	7.2	NIL	Cloudy. Rain from mid am. Ocnl mod rain or drzl. Mist		
MEAN		1017.5	17.7	13.0	15.4	9.6	15.7	16.0	NW	11.0	11.4	TOTAL	21.1	193.7			
0 YEAR AVE. 1971-00		1017.1	17.6	12.5	15.1	9.6	16.0	16.2	W	11.5	11.1	////	66.8	174.0			
EXTREMES ARE IN BOLD TYPE	NUMBER OF DAYS WITH	RAIN	WET	SNOW/ SLEET	HAIL	THNDER	LGHTNG	AIR FROST	GROUND FROST	FOG	FOG 9a.m.	GALE	NO SUN	TOTALS FOR YEAR TO DATE			
		≥0.2mm	≥1.0mm														
		14	7	0	0	0	1	0	0	1	0	0	3				
RECORDS FROM JANUARY 1947														RAINFALL	747.8 mm	SUNSHINE	1674.8 hrs
ETTEST DAY	43.7mm	DRIEST MONTH	6.9mm	LOWEST MIN	5.8°C	WARMEST MNTH	17.5°C	SUNNIEST MNTH	266.5hrs	RAIN DAYS	128	SUNLESS DAYS	25				
DAY/YEAR	20th/1949	YEAR	1997	DAY/YEAR	28th/1974	YEAR	1949	YEAR	1959	WET DAYS	95						
TEST MNTH	194.5mm	HIGHEST MAX	30.6°C	LOWEST GRASS	-1.0°C	COLDEST MNTH	12.8°C	DULLEST MNTH	104.5hrs								
DAY/YEAR	1952	DAY/YEAR	2nd/1961	DAY/YEAR	23rd/1979	YEAR	1986	YEAR	1956								

METEOROLOGICAL OBSERVATIONS GUERNSEY AIRPORT OCTOBER 2001

Y	DATE	BAROMETER	TEMPERATURE deg C						WIND				RAIN	SUN	WEATHER				
			mb	AIR			GRASS	SOIL		DIR'N	SPEED(knots)								
				at 9a.m.	MAX	MIN		MEAN	MIN		30cm	100cm				9a.m.	9a.m.	MEAN	MAX
													mm	hrs					
JN	1	1004.4	18.1	16.2	17.1	14.3	15.6	15.4	230	18	16.8	32	20.0	0.1	Cloudy, slt rain am & late pm				
JE	2	1002.7	17.8	14.6	16.2	13.6	15.4	15.3	320	09	12.5	38	NIL	0.6	Cloudy, rain. Ocnl hvy rain to mid am bec slt rain. Cloudy				
ED	3	1013.1	17.5	14.0	15.8	10.8	15.3	15.3	250	12	12.5	22	0.5	8.3	Cloudy bec fair. Shwrs early pm. Fine evng				
IU	4	1015.2	18.1	13.7	15.9	10.6	15.1	15.3	200	12	11.1	21	0.5	2.6	Fair. Slt shwr mid am bec cloudy. Fair early pm. Shwrs by evng				
RI	5	1005.7	17.5	14.3	15.9	13.5	15.2	15.3	170	11	13.0	26	2.5	0.5	Cloudy. Rain & drzl evng, ocnl fair later				
AT	6	1003.1	18.2	14.9	16.6	12.0	15.2	15.3	180	12	14.5	30	TR	6.1	Fair or fine. Ocnl cloudy am, slt rain. Fine pm bec fair evng				
JN	7	997.2	15.1	12.3	13.7	10.8	15.0	15.2	180	16	22.7	48	25.1	0.1	Fine bec cloudy mid am. Hvy rain late am & early pm. Gale, fog patch				
JN	8	998.9	15.2	12.5	13.9	10.2	14.5	15.2	210	25	19.5	40	5.5	4.2	Cloudy, ocnl fair. Hvy shwr late am. Tempo shwrs pm				
JE	9	1011.2	16.3	10.7	13.5	10.1	14.2	15.0	290	09	9.6	21	TR	8.3	Fair, ocnl cloudy early, shwrs. Fair or fine, dew later				
ED	10	1025.4	16.5	10.2	13.4	4.2	14.1	15.0	220	10	9.5	20	NIL	9.3	Fine, dew bec fair. Ocnl cloudy late pm				
IU	11	1029.3	16.8	13.5	15.2	10.5	14.1	14.8	210	11	9.6	19	NIL	9.1	Fair, ocnl cloudy am. Mainly fine pm. Dew evng				
RI	12	1021.1	19.3	14.7	17.0	11.3	14.4	14.7	150	11	8.1	17	NIL	6.8	Fine, dew bec fair. Ocnl cloudy late afternoon				
AT	13	1019.4	20.7	16.5	18.6	13.5	14.9	14.7	140	08	7.9	17	TR	3.1	Fair, dew. Tempo fine early bec fair to cloudy				
JN	14	1013.2	18.8	15.0	16.9	14.1	15.4	14.8	190	09	10.7	24	6.7	NIL	Cloudy, haze bec mist. Fog patches. Drzl. Mod rain early pm				
JN	15	1006.0	17.5	12.8	15.2	13.1	15.3	14.9	150	12	12.2	29	1.7	1.7	Cloudy, hvy rain early. Mist, ocnl rain & drzl. Fair midday bec shwrs				
JE	16	1023.4	16.3	13.0	14.7	8.8	14.6	14.9	190	11	11.3	22	NIL	4.3	Fine bec fair. Cloudy pm bec fair late				
ED	17	1013.0	17.6	14.8	16.2	12.0	14.6	14.9	130	12	13.2	27	1.5	3.5	Fair ocnl cloudy. Slight rain evng. Tempo mod rain late				
IU	18	1009.6	17.4	13.7	15.6	10.8	14.7	14.7	200	12	11.0	24	0.2	9.0	Mod rain early. Cloudy bec fine mid am. Fair evng				
RI	19	1001.6	18.1	14.4	16.3	11.3	14.6	14.8	150	15	10.4	30	5.4	2.7	Bec cloudy, slight shwrs. Lghtng mid am & evng. Ocnl fair. Rain late				
AT	20	1000.9	17.5	12.9	15.2	11.7	14.7	14.8	030	02	3.4	10	6.3	0.6	Cloudy, rain early. Tempo mist				
JN	21	1002.9	15.8	11.5	13.7	9.4	14.6	14.7	320	04	4.7	13	1.1	6.5	Cloudy, hvy shwrs early. Fair				
JN	22	1009.9	16.1	12.2	14.1	5.9	14.4	14.7	170	08	8.5	23	17.9	NIL	Fair or fine, dew bec cloudy. Rain or drzl mid am. Mod or hvy rain pm, fog.				
JE	23	1010.9	16.2	13.8	15.0	11.6	14.4	14.6	210	13	15.3	30	1.9	7.8	Fair, ocnl cloudy early. Slt shwrs.				
ED	24	1017.6	15.3	11.6	13.5	11.1	14.3	14.7	230	17	17.9	34	1.0	1.5	Fair bec cloudy, tempo hvy rain early. Slt shwrs. Ocnl fair pm				
IU	25	1024.4	17.0	14.3	15.7	12.2	14.2	14.6	210	11	13.3	24	TR	5.3	Cloudy bec fair. Cloudy late evening, slt rain				
RI	26	1013.3	16.4	13.2	14.8	12.1	14.4	14.7	190	16	14.7	29	7.1	0.1	Cloudy, slt rain early. Rain pm, tempo hvy rain bec fair				
AT	27	1016.9	16.4	12.8	14.6	10.2	14.1	14.6	210	08	7.7	19	TR	3.2	Cloudy, tempo slt rain. Ocnl fair. Dew late evening				
JN	28	1024.0	17.2	13.3	15.3	10.0	14.2	14.6	090	04	5.3	12	0.1	7.7	Fair, mist & dew. Fog mid am. Fair bec fine				
JN	29	1029.0	17.1	11.5	14.3	5.9	14.1	14.5	250	03	6.2	18	TR	6.4	Fair or fine, shallow fog to mid am. Fair bec cloudy pm. Mist evng				
JE	30	1017.9	19.0	13.7	16.4	11.0	14.1	14.5	170	13	12.7	29	0.9	7.6	Fine, mist & dew early. Tempo haze pm. Ocnl cloudy late				
ED	31	1024.2	14.9	10.3	12.6	8.4	14.1	14.4	300	18	15.4	34	TR	7.8	Fair bec cloudy. Rain early then fair or fine				
MEAN		1013.1	17.2	13.3	15.2	10.8	14.6	14.9	S	11.4	11.7	TOTAL	105.9	134.8					
30 YEAR AVE. 1971-00		1015.6	14.7	10.5	12.6	7.7	13.3	14.3	W	12.6	12.5	////	89.1	118.3					
EXTREMES ARE IN BOLD TYPE	NUMBER OF DAYS WITH	RAIN ≥0.2mm	WET ≥1.0mm	SNOW/ SLEET	HAIL	THUNDER	LGHTNG	AIR FROST	GROUND FROST	FOG	FOG 9a.m.	GALE	NO SUN	TOTALS FOR YEAR TO DATE					
		18	14	0	0	0	1	0	0	4	1	1	2						
RECORDS FROM JANUARY 1947															RAINFALL	853.7 mm	SUNSHINE	1809.6 hrs	
VETTEST DAY DAY/YEAR	46.2mm 7th/1987	DRIEST MONTH YEAR	3.4mm 1978	LOWEST MIN DAY/YEAR	3.9°C 30th/1983	WARMEST MNTH YEAR	14.7°C 1995	SUNNIEST MNTH YEAR	176.4hr 1971							RAIN DAYS	146	SUNLESS DAYS	27
ETTEST MNTH DAY/YEAR	233.9mm 1960	HIGHEST MAX DAY/YEAR	23.3°C 4th,5th/1959	LOWEST GRASS DAY/YEAR	-4.0°C 30th/1983	COLDEST MNTH YEAR	9.6°C 1974	DULLEST MNTH YEAR	72.6hrs 1968							WET DAYS	109		

METEOROLOGICAL OBSERVATIONS GUERNSEY AIRPORT NOVEMBER 2001

DAY	DATE	BAROMETER	TEMPERATURE deg C						WIND				RAIN	SUN	WEATHER		
			AIR			GRASS	SOIL		DIR'N	SPEED(knots)							
			mb														
		at 9a.m.	MAX	MIN	MEAN	MIN	30cm	100cm	9a.m.	9a.m.	MEAN	MAX	mm	hrs			
HU	1	1040.5	13.8	7.9	10.9	0.6	13.2	14.4	360	05	4.6	13	NIL	7.8	Mainly fair. Ocnl dry air pm		
RI	2	1041.9	14.5	8.6	11.6	1.0	12.5	14.2	110	03	4.8	11	NIL	7.4	Fair, ocnl fine pm. Dew late		
AT	3	1034.8	14.2	8.4	11.3	1.9	12.3	14.0	080	04	5.0	11	NIL	7.9	Fine, dew. Shallow fog mid am bec fair		
JN	4	1027.3	14.0	8.4	11.2	0.6	12.1	13.9	340	04	7.0	17	TR	0.7	Fair, slt dew bec cloudy. Fair evening		
ON	5	1028.6	13.9	9.3	11.6	3.8	12.0	13.6	020	05	7.5	18	0.5	8.0	Fair bec cloudy; slt shower mid am bec fine. Mainly fair pm		
JE	6	1020.5	14.5	10.6	12.6	5.6	12.0	13.4	300	20	19.0	32	0.3	2.2	Cloudy, slt rain. Mod rain & drzl mid am. Ocnl fair late am. Shwrs pm		
ED	7	1018.3	13.8	12.3	13.1	10.6	12.4	13.3	290	17	21.3	41	4.7	0.1	Cloudy, tempo fair early. Ocnl showery rain		
HU	8	1004.7	12.9	5.3	9.1	6.1	12.4	13.3	300	26	23.6	51	0.7	2.8	Cloudy, tempo hvy rain. Gale early. Ocnl fair. Shwrs, rain or hail		
RI	9	1025.1	7.7	4.4	6.1	1.4	10.9	13.2	010	17	15.3	32	NIL	5.1	Fair, dry air early. Ocnl cloudy		
AT	10	1033.0	9.3	4.5	6.9	-1.8	10.2	13.1	020	02	4.4	13	TR	8.3	Fair bec fine. Dry air late am. Cloudy late pm		
JN	11	1028.7	13.9	5.9	9.9	-2.0	10.2	12.7	360	07	7.6	18	NIL	4.3	Cloudy, slt rain mid am bec fine. Cloudy pm. Fine late, dew		
ON	12	1020.0	12.8	9.5	11.2	3.9	10.8	12.4	270	08	10.6	24	4.8	0.2	Fine, dew bec cloudy. Rain or drzl pm, mist. Tempo fair evng		
JE	13	1022.3	12.7	6.8	9.8	7.4	11.3	12.3	030	14	14.4	31	NIL	0.9	Cloudy, rain am. Ocnl fair pm		
ED	14	1035.2	9.5	6.0	7.8	2.4	10.3	12.4	020	11	10.8	24	TR	2.3	Fair or fine bec cloudy. Slt shwr pm, bec fair		
HU	15	1038.9	10.6	7.5	9.1	3.3	10.0	12.1	090	12	11.5	23	NIL	7.5	Fair, slt shwr early. Tempo cloudy. Dry air midday		
RI	16	1038.4	11.0	8.5	9.8	4.1	9.9	12.0	080	15	16.8	33	NIL	1.7	Fair bec cloudy. Fair by evening. Cloudy later		
AT	17	1031.9	11.1	7.1	9.1	4.8	10.0	11.9	090	10	12.1	24	NIL	7.7	Cloudy bec fair then fine. Fair evng, slt dew		
JN	18	1024.9	9.9	6.4	8.2	3.1	9.8	11.8	080	08	8.3	26	7.9	NIL	Fair bec cloudy. Slt shwrs. Mod drzl & rain late evng, tempo hvy rain		
ON	19	1025.2	9.9	6.9	8.4	5.6	9.8	11.6	050	02	5.8	18	2.7	NIL	Cloudy, rain ocnl mod rain. Fair late		
JE	20	1033.3	9.8	5.0	7.4	2.6	9.7	11.5	140	06	6.3	23	NIL	7.8	Fair, tempo cloudy mid am bec fine. Fair later		
ED	21	1033.7	11.6	6.5	9.1	-1.3	9.2	11.4	210	11	11.4	24	TR	4.7	Fair or fine bec cloudy pm		
HU	22	1026.1	13.2	9.4	11.3	8.1	9.7	11.3	280	18	14.5	31	0.1	NIL	Cloudy, tempo slight rain or drizzle		
RI	23	1030.2	11.2	7.2	9.2	2.8	9.8	11.2	360	03	6.3	14	0.9	3.4	Cloudy bec fair. Cloudy pm. Rain or drzl evening. Mist		
AT	24	1027.3	13.6	9.6	11.6	7.9	10.0	11.2	310	08	8.8	17	TR	5.2	Cloudy bec fair. Cloudy late evng. Slt drzl late		
UN	25	1021.8	12.7	9.0	10.9	6.7	10.3	11.1	240	13	11.7	25	6.4	0.1	Cloudy, slt drzl early. Tempo fair mid am. Drzl & fog late am. Rain evng.		
ON	26	1018.0	10.0	5.7	7.9	1.3	10.3	11.2	020	05	5.9	17	1.3	6.5	Cloudy, slt rain early bec fine. Ocnl dry air		
UE	27	1012.8	11.6	6.0	8.8	-1.0	9.6	11.2	250	18	14.2	35	4.2	NIL	Fair to cloudy. Shwrs am. Hail shwr early. Rain by evng		
ED	28	1020.5	12.5	8.4	10.5	4.5	9.7	11.1	290	08	11.2	27	2.4	2.8	Cloudy, shwrs. Ocnl fair am. Cloudy pm. Slt rain late		
HU	29	1017.4	13.4	11.3	12.3	7.6	9.9	11.0	230	17	19.0	33	13.1	NIL	Cloudy, rain or drzl. Fog patches midday. Tempo hvy rain		
RI	30	1013.0	13.3	12.7	13.0	11.6	10.7	11.0	240	19	17.3	34	7.0	NIL	Cloudy. Ocnl rain or drizzle from mid am. Mist. Fog patches pm		
MEAN		1026.5	12.1	7.8	10.0	3.8	10.7	12.3	N	10.5	11.2	TOTAL	57.0	105.4			
30 YEAR AVE. 1971-00		1016.2	11.4	7.7	9.5	5.0	10.1	11.7	SW	13.4	13.5	////	97.9	74.9			
EXTREMES ARE IN BOLD TYPE	NUMBER OF DAYS WITH	RAIN ≥0.2mm	WET ≥1.0mm	SNOW/ SLEET	HAIL	THUNDER	LGHTNG	AIR FROST	GROUND FROST	FOG	FOG 9a.m.	GALE	NO SUN	TOTALS FOR YEAR TO DATE			
		14	10	0	2	0	0	0	4	3	0	1	6				
RECORDS FROM JANUARY 1947														RAINFALL	910.7 mm	SUNSHINE	1915.0 hrs
WETTEST DAY	39.4mm	DRIEST MONTH		16.1mm	LOWEST MIN		0.0°C	WARMEST MNTH		12.0°C	SUNNIEST MNTH		117.7hr	RAIN DAYS	160	SUNLESS DAYS	33
DAY/YEAR	15th/1975	YEAR		1978	18th/1952, 19th/1985, 22nd/1993		YEAR	1994		1994	YEAR		1988	WET DAYS	119		
ETTEST MNTH	192.5mm	HIGHEST MAX		16.8°C	LOWEST GRASS		-5.6°C	COLDEST MNTH		7.7°C	DULLEST MNTH		35.9hrs				
DAY/YEAR	1965	DAY/YEAR		1st/1999	DAY/YEAR		29th/1987	YEAR		1993	YEAR		1994				

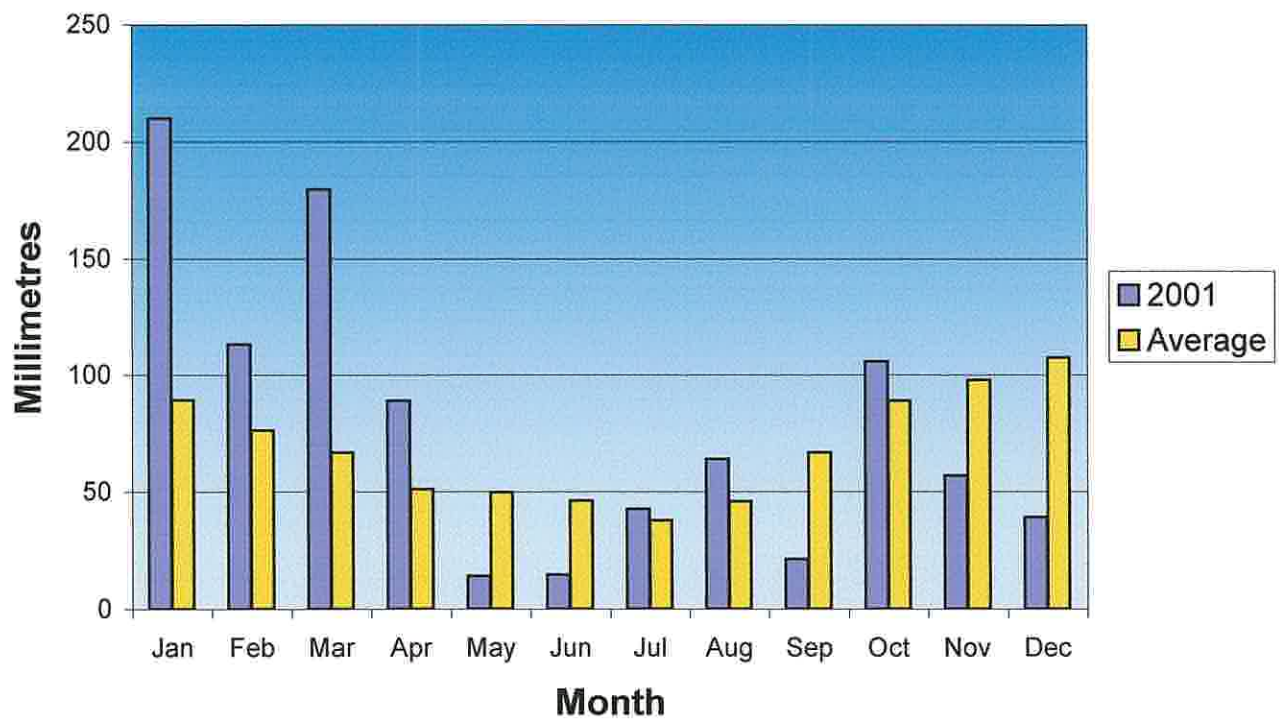
METEOROLOGICAL OBSERVATIONS GUERNSEY AIRPORT DECEMBER 2001

DAY	DATE	BAROMETER	TEMPERATURE deg C					WIND				RAIN	SUN	WEATHER				
			mb	AIR			GRASS	SOIL		DIR'N	SPEED(knots)							
				at 9a.m.	MAX	MIN	MEAN	MIN	30cm		100cm				9a.m.	9a.m.	MEAN	MAX
AT	1	1013.6	13.2	7.4	10.3	<u>9.2</u>	<u>11.0</u>	11.0	280	09	12.4	29	TR	5.1	Cloudy, rain bec fine late am. Fair or fine pm			
JN	2	1024.2	9.5	5.9	7.7	1.4	10.4	<u>11.2</u>	110	08	<u>5.2</u>	17	3.8	NIL	Cloudy, ocnl fair early. Rain pm, tempo mod rain			
ON	3	1022.5	10.7	7.0	8.9	4.8	10.0	<u>11.2</u>	---	00	8.6	34	2.1	0.1	Cloudy, rain & drizzle late pm			
JE	4	1014.9	12.5	9.5	11.0	6.2	10.1	11.1	270	17	16.0	35	1.0	2.5	Cloudy, rain & drzl early. Ocnl fair. Slt showers late			
ED	5	1016.7	<u>14.2</u>	<u>10.4</u>	<u>12.3</u>	6.0	10.2	11.0	230	20	17.7	37	0.5	2.1	Cloudy ,slt rain or drzl. Mist patches. Bec fair pm			
HU	6	1031.8	10.9	8.0	9.5	3.9	10.2	11.0	120	06	7.9	20	TR	NIL	Fair bec cloudy. Slt drizzle late			
RI	7	1034.9	11.1	7.8	9.5	6.1	10.2	11.0	130	09	10.5	21	NIL	<u>7.7</u>	Cloudy, slt rain or drizzle early bec fair or fine mid am			
AT	8	1036.8	9.5	5.7	7.6	2.7	9.7	11.0	090	11	11.3	21	NIL	<u>7.7</u>	Fine, slt dew early			
JN	9	1036.3	8.6	4.9	6.8	2.0	9.0	11.0	080	12	13.7	26	NIL	7.3	Fine, slt dew early. Tempo fair mid am			
ON	10	1035.6	8.1	4.8	6.5	1.9	8.5	10.7	100	14	15.5	28	NIL	<u>7.7</u>	Fine. Ocni dry air			
JE	11	1037.5	10.0	4.4	7.2	1.4	8.0	10.5	090	11	14.2	28	NIL	7.5	Fine. Ocni dry air. Cloudy evening			
ED	12	1031.7	10.3	6.8	8.5	1.3	8.1	10.2	040	11	16.4	35	NIL	5.4	Cloudy bec fine, dew. Cloudy by midday, ocnl fair pm			
HU	13	1030.2	8.6	5.8	7.2	5.3	8.3	10.1	080	19	19.3	34	NIL	0.1	Cloudy, ocnl fair late			
RI	14	1035.1	5.9	2.7	4.3	0.9	7.9	10.0	070	18	<u>21.2</u>	36	NIL	7.3	Fair bec fine. Dry air			
AT	15	1034.7	6.6	3.7	5.2	1.0	7.0	9.8	070	20	20.6	37	NIL	6.8	Fine. Dry air. Fair late evening			
UN	16	1033.9	6.7	3.5	5.1	2.7	6.9	9.6	080	18	17.7	34	NIL	0.6	Fair bec cloudy. Tempo fair evening			
ON	17	<u>1038.7</u>	7.4	3.2	5.3	0.8	6.6	9.3	070	12	13.0	26	TR	4.3	Cloudy bec fair. Cloudy pm. Slt drzl late			
UE	18	1037.3	7.6	5.9	6.8	3.2	6.9	9.2	080	13	13.3	27	NIL	4.5	Cloudy. Slt drzl or rain early. Ocni fair or fine			
ED	19	1035.6	6.6	3.3	5.0	-2.4	6.8	9.0	---	<u>00</u>	5.3	17	0.3	NIL	Fine bec cloudy mid am. Slt shwrs pm			
HU	20	1031.7	8.2	4.2	6.2	2.8	6.9	9.0	070	12	7.0	24	1.0	4.6	Cloudy, shwry rain mid am. Fair or fine late am. Cloudy evng. Rain late.			
RI	21	1023.7	9.4	4.3	6.9	-4.6	6.8	8.9	280	12	14.0	34	1.5	1.8	Cloudy, rain early bec fair. Cloudy late am. Shwrs			
AT	22	1016.6	9.2	2.6	5.9	0.4	7.0	8.9	350	07	9.4	24	TR	2.8	Fair to cloudy. Tempo slt shwrs. Ocni dry air. Fine evng			
UN	23	1023.5	<u>5.8</u>	<u>1.6</u>	<u>3.7</u>	-2.0	<u>6.3</u>	8.7	010	04	6.5	20	0.8	5.9	Fair or fine. Cloudy late evening. Slt rain late			
ON	24	1018.3	9.5	3.4	6.5	<u>-6.0</u>	<u>6.3</u>	8.6	270	15	17.4	38	5.2	0.5	Cloudy ocnl rain am. Tempo fair midday. Hvy shwrs evng			
MAS	25	1004.1	10.0	4.6	7.3	5.6	6.9	8.5	280	17	19.4	<u>40</u>	1.3	1.1	Cloudy, shwrs or slt rain. Ocni fair pm. Hail shwrs evng			
JAY	26	1014.2	6.6	2.3	4.5	-0.2	6.7	8.4	340	16	13.5	35	1.9	3.8	Fair to cloudy, shwrs am. Tempo hail. Fair pm. Hvy shwr late evng			
HU	27	1011.8	10.4	4.6	7.5	0.0	6.6	8.5	260	16	18.2	37	1.0	1.4	Mainly cloudy. Showers			
RI	28	1011.3	11.4	9.0	10.2	6.4	7.2	<u>8.4</u>	270	<u>22</u>	18.4	<u>40</u>	<u>15.3</u>	0.1	Slt shwrs early. Rain or drzl pm. Ocni mod rain. Tempo fog evng			
AT	29	<u>999.5</u>	10.3	3.2	6.8	5.0	7.7	8.5	050	10	10.5	24	3.4	NIL	Cloudy, drzl. Fog early bec mist. Rain & drzl bec slt rain. Fine late			
UN	30	1015.0	7.6	3.1	5.4	-0.5	6.9	8.5	320	13	11.8	24	TR	4.8	Fair ocnl fine. Ocni dry air. Slt shower late pm			
ON	31	1030.7	6.0	2.7	4.4	-1.0	<u>6.3</u>	8.5	050	10	10.0	22	NIL	5.4	Mainly fair. Dry air			
MEAN		1025.2	9.1	5.0	7.1	2.1	8.0	9.7	E	12.3	13.4	TOTAL	39.1	108.9				
30 YEAR AVE. 1971-00		1016.0	9.6	6.0	7.8	3.9	8.0	9.5	SW	14.3	14.5	////	107.3	52.2				
EXTREMES ARE IN BOLD TYPE	NUMBER OF DAYS WITH	RAIN	WET	SNOW/ SLEET	HAIL	THUNDER	LGHTNG	AIR FROST	GROUND FROST	FOG	FOG 9a.m.	GALE	NO SUN	TOTALS FOR YEAR TO DATE				
		≥0.2mm	≥1.0mm															
		14	11	0	2	0	0	0	7	2	0	0	4					
RECORDS FROM JANUARY 1947															RAINFALL	949.8 mm	SUNSHINE	2023.9 hrs
WETTEST DAY	42.2mm	DRIEST MONTH		28.1mm	LOWEST MIN		-3.8°C	WARMEST MNTH		10.1°C	SUNNIEST MNTH		98.5hrs	RAIN DAYS	174	SUNLESS DAYS	37	
DAY/YEAR	30th/1978	YEAR		1953	DAY/YEAR		24th/1963	YEAR		1953	YEAR		1962	WET DAYS	130			
ETTEST MNTH	249.6mm	HIGHEST MAX		15.6°C	LOWEST GRASS		-8.9°C	COLDEST MNTH		4.6°C	DULLEST MNTH		26.6hrs					
DAY/YEAR	1999	DAY/YEAR		6th/1953	DAY/YEAR		29th/1964	YEAR		1950	YEAR		1966					

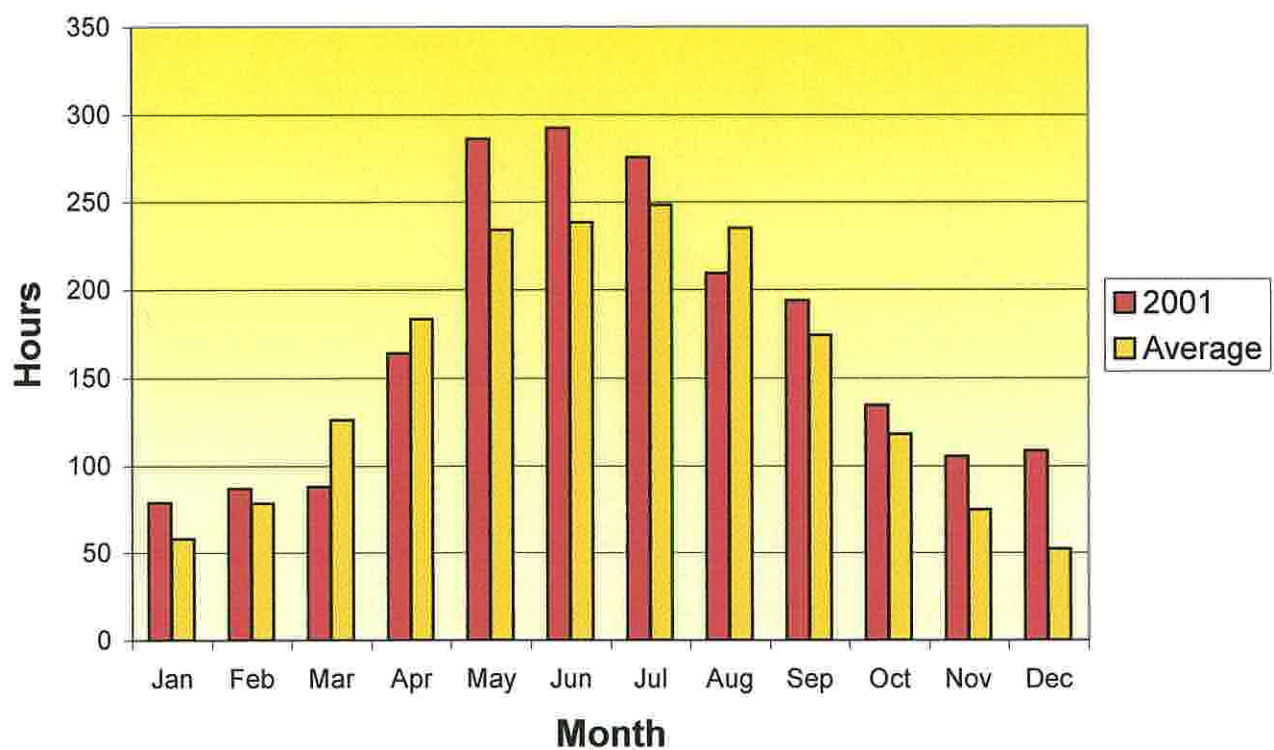
Guernsey Airport Met. Office

Appendix I

Monthly Rainfall



Monthly Sunshine



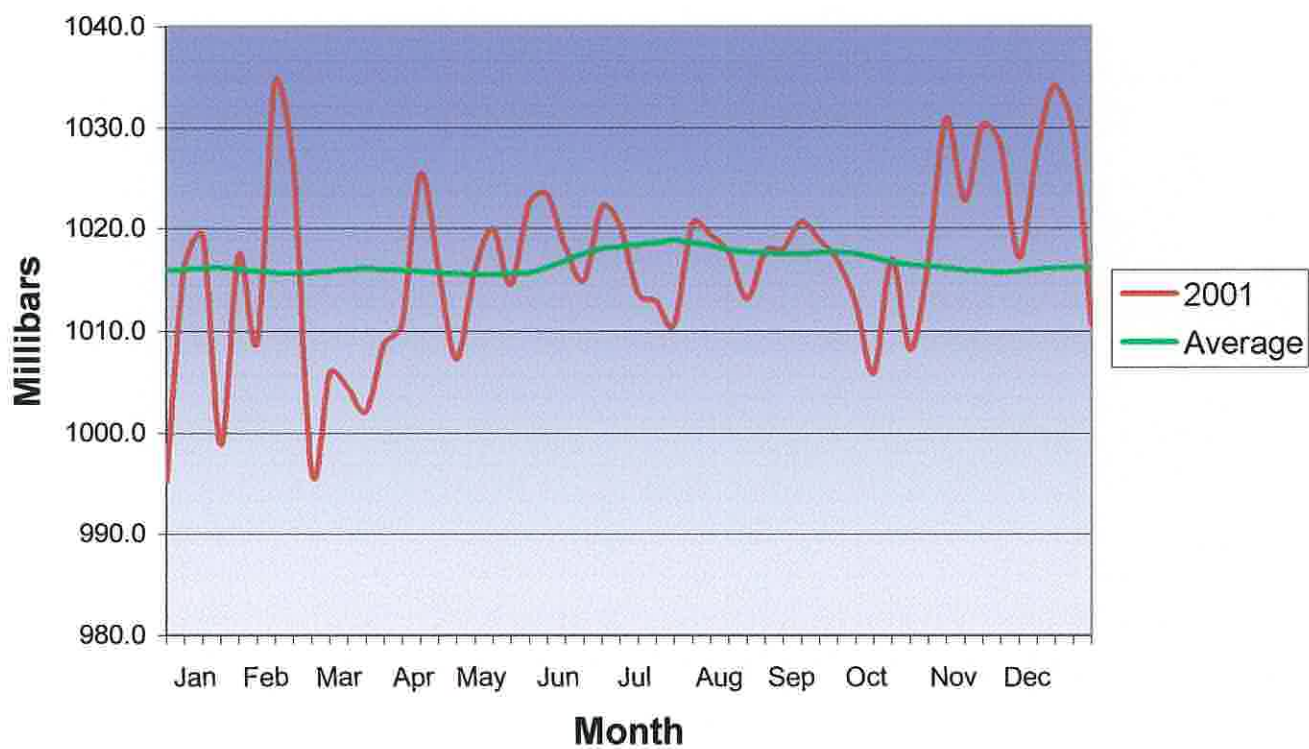
Guernsey Airport Met. Office

Appendix II

Weekly Mean Air Temperature



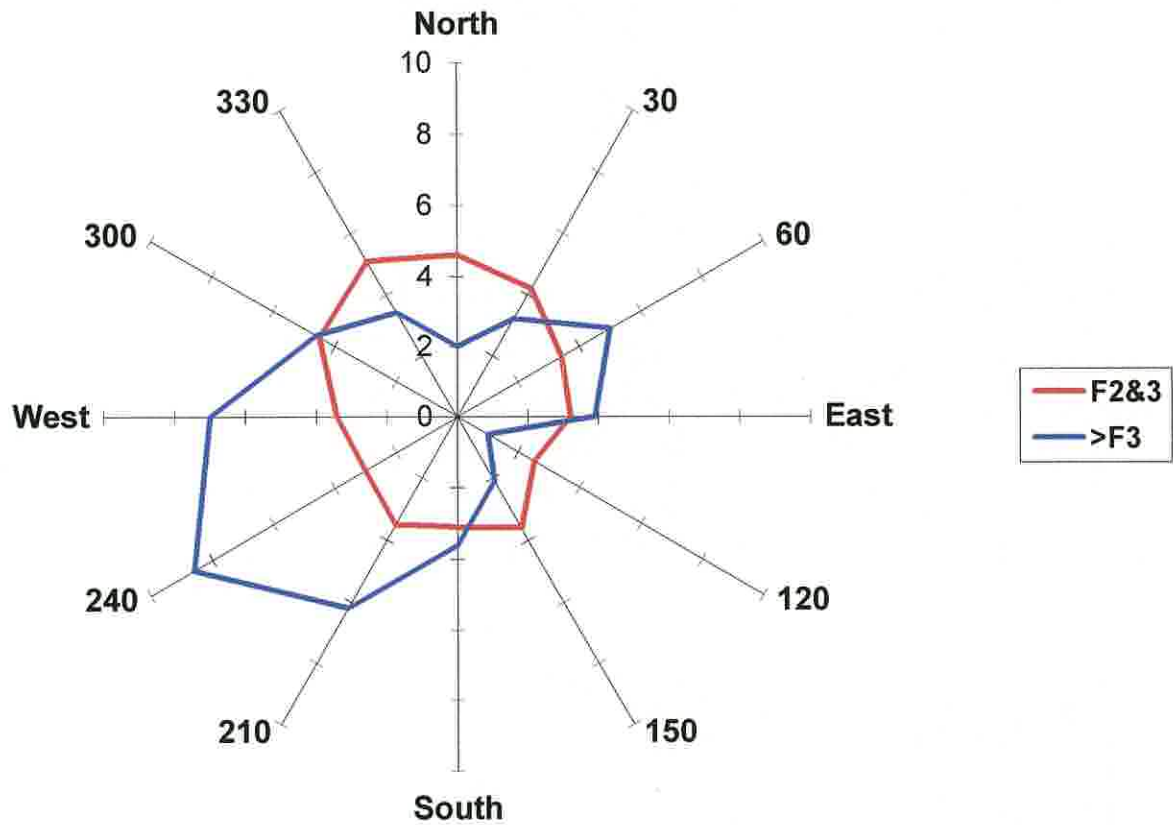
Weekly Mean Air Pressure



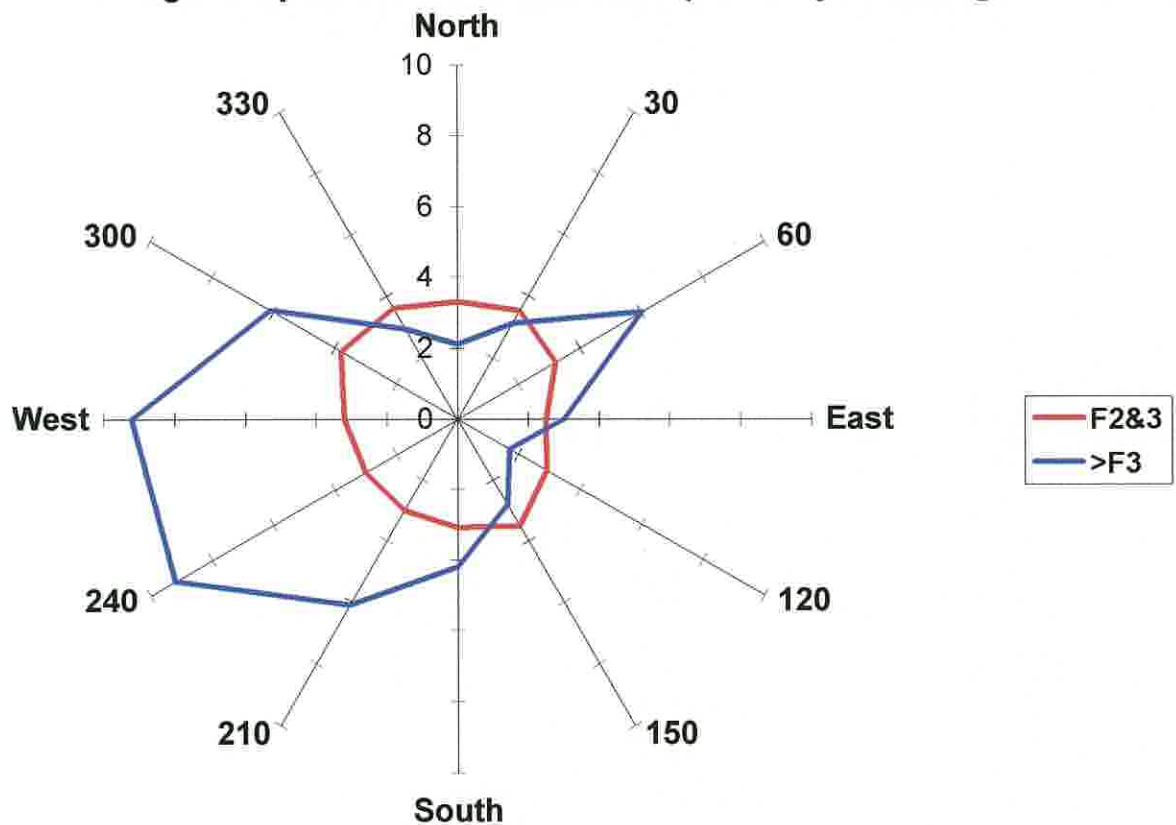
Guernsey Airport Met. Office

Appendix III

Percentage frequencies of direction and speed-2001



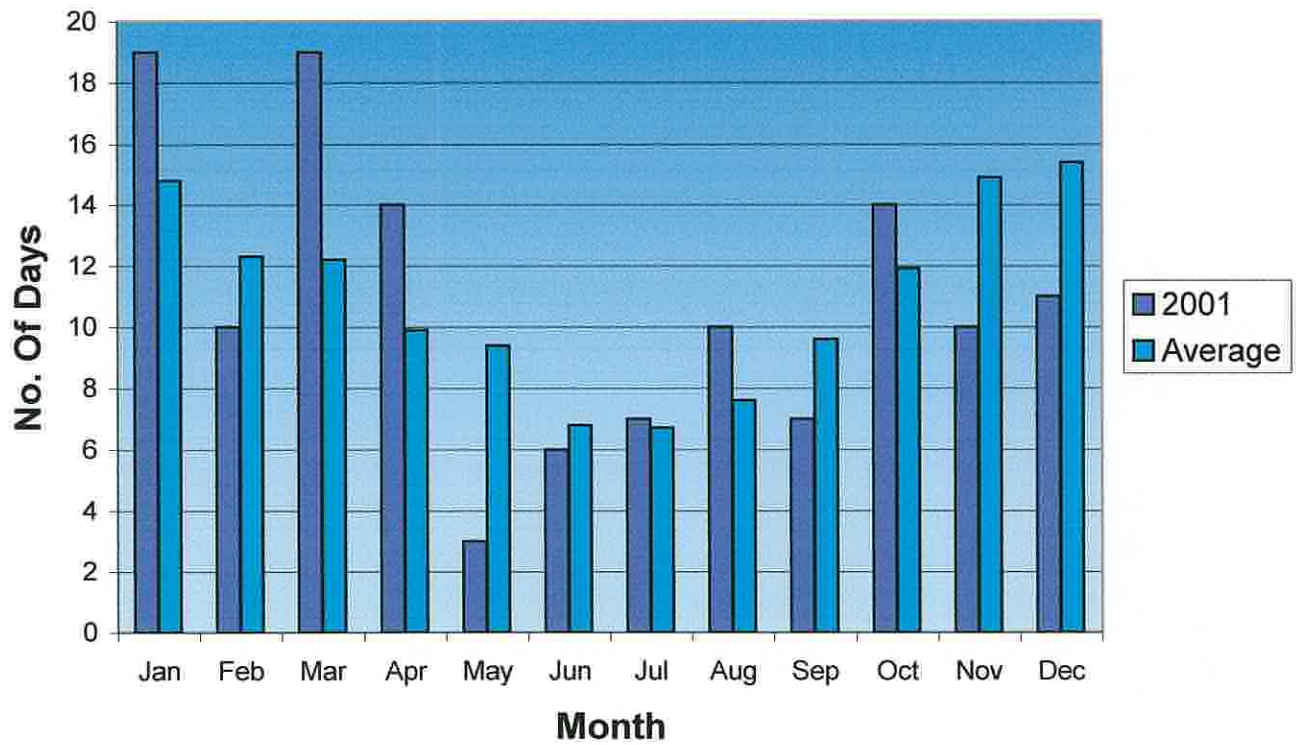
Percentages frequencies of direction and speed-30 year average



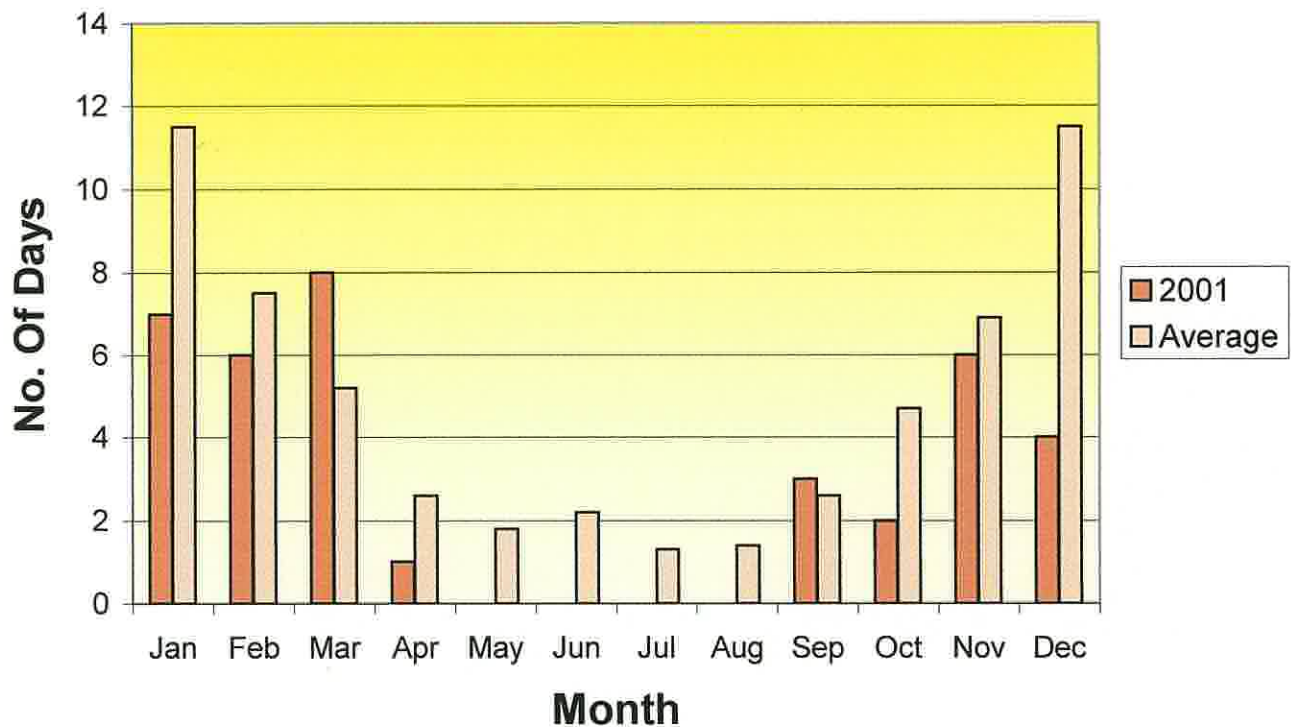
Guernsey Airport Met. Office

Appendix IV

Wet Days >1.0mm



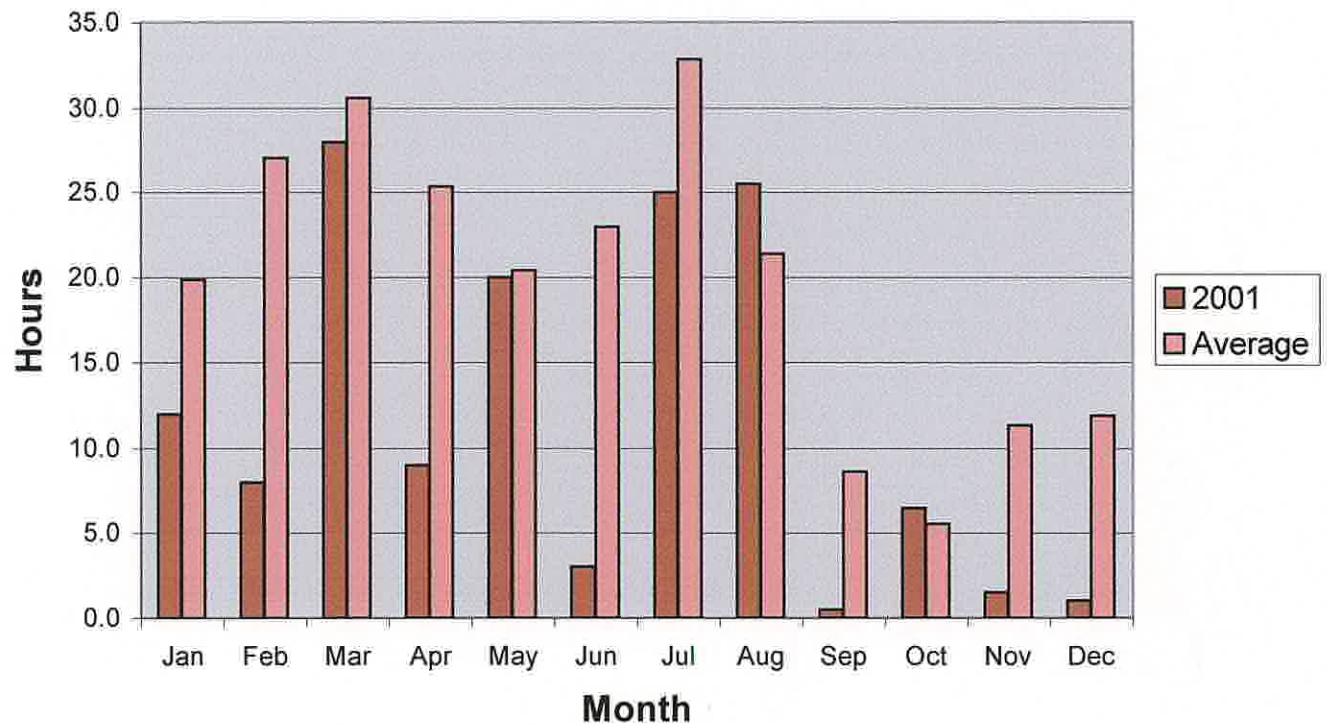
Sunless Days



Guernsey Airport Met. Office

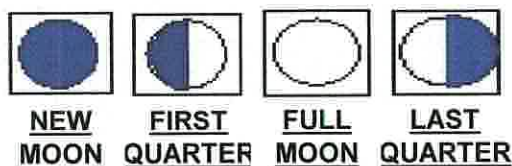
Appendix V

Monthly Hours of Fog



Weekly Sea Water Surface temperatures



PHASES OF THE MOON 2002

Jan	13	21	28	6	Jan
Feb	12	20	27	4	Feb
Mar	14	22	28	6	Mar
Apr	12	20	27	4	Apr
May	12	19	26	4	May
Jun	10	18	24	3	Jun
Jul	10	17	24	2	Jul
Aug	8	15	22	31/01	Aug
Sep	7	13	21	29	Sep
Oct	6	13	21	29	Oct
Nov	4	11	20	27	Nov
Dec	4	11	19	27	Dec

SUMMER WEEKEND TIDES - ST. PETER PORT

		High Water				Low Water			
Date		Time	Height	Time	Height	Time	Height	Time	Height
June	01 Sat	10:21	7.4	22:34	7.4	04:23	2.7	16:36	3.2
	02 Sun	11:11	7.0	23:28	7.0	05:12	3.2	17:27	3.7
	08 Sat	04:34	7.8	16:57	8.0	10:54	2.4	23:14	2.3
	09 Sun	05:17	8.1	17:38	8.3	11:36	2.1	23:56	2.0
	15 Sat	09:23	8.3	21:37	8.5	03:20	1.9	15:38	2.2
	16 Sun	10:12	8.0	22:28	8.2	04:07	2.1	16:27	2.5
	22 Sat	04:01	8.2	16:34	8.4	10:33	2.0	22:58	1.9
	23 Sun	04:58	8.5	17:25	8.7	11:26	1.8	23:50	1.7
	29 Sat	09:22	8.1	21:33	8.2	03:26	2.0	15:38	2.5
July	30 Sun	09:59	7.7	22:10	7.8	04:03	2.4	16:13	2.9
	06 Sat	02:51	7.0	15:24	7.2	09:17	3.2	21:44	3.2
	07 Sun	03:50	7.3	16:16	7.6	10:11	2.9	22:37	2.7
	13 Sat	08:34	8.9	20:47	9.2	02:33	1.3	14:51	1.5
	14 Sun	09:18	8.8	21:32	9.0	03:17	1.3	15:35	1.6
	20 Sat	02:32	7.5	15:13	7.6	09:07	2.9	21:41	2.8
	21 Sun	03:43	7.6	16:16	7.9	10:15	2.7	22:44	2.5
	27 Sat	08:27	8.6	20:38	8.8	02:31	1.6	14:44	1.9
	28 Sun	09:00	8.4	21:10	8.5	03:04	1.8	15:15	2.1
August	03 Sat	00:31	6.8	13:13	6.8	07:08	3.7	19:44	3.8
	04 Sun	01:52	6.8	14:33	6.9	08:27	3.6	21:02	3.5
	10 Sat	07:39	9.3	19:53	9.7	01:38	1.0	13:57	1.0
	11 Sun	08:22	9.4	20:36	9.8	02:23	0.7	14:40	0.9
	17 Sat	00:42	7.3	13:31	7.1	07:16	3.4	19:58	3.5
	18 Sun	02:13	7.0	14:59	7.1	08:50	3.5	21:32	3.4
	24 Sat	07:30	8.8	19:42	9.1	01:35	1.5	13:50	1.7
	25 Sun	08:03	8.8	20:14	9.0	02:08	1.5	14:20	1.7
	31 Sat	11:06	7.0	23:34	6.8	05:01	3.5	17:23	3.7

La Société Guernesiaise Astronomy Section**ASTRONOMICAL EVENTS IN 2002****PLANETS**

Jupiter will be visible in the evenings from January to June, and again in November and December.

Saturn will be well-placed for evening observation from January to May, and from September to December. It is at opposition on 17th December.

We can expect many events involving Jupiter's moons, and Saturn's rings will remain a beautiful sight.

Mars can be seen in the evenings from January to June, low in the west.

Venus will appear as the evening star from February to August. Its greatest eastern (evening) elongation is on 22nd August. It will be at its greatest brilliance on 26th September and again on 7th December.

Mercury will be visible in the evening in the second and third week of January (maximum elongation on the 12th), late April and early May (maximum elongation on the 4th May), and in the last half of December (maximum elongation on the 6th). It will be close to the Pleiades on 30th April.

Uranus is at opposition on 20th August, Neptune on 2nd August, and Pluto on 7th June.

OCCULTATIONS

Jupiter will be occulted by the Moon from 2:57 am to 3:40 am on 23 February. It will be close to the Moon at 5:50 pm on 26th January.

There is a grazing occultation of Saturn at 10:15 pm on 16 April, and there is another grazing occultation of this planet at 7:42 am on 14th May (but in daylight). The Moon passes close to Saturn at 1:30 am on 21st February.

At 2:03 am on 5th March the Moon will occult the 2.5 magnitude star *Graffias* in the constellation Scorpius. It will reappear at 3:09 am.

At 4:11 pm on 12th October the 2nd magnitude star *Nunki* in the constellation Sagittarius will be occulted, reappearing at 5:05 pm.

The Moon passes close to the open cluster M 35 at 8:45 pm on 22nd February.

CONJUNCTIONS

A major conjunction takes place during the first week of May, when all five naked eye planets (Mercury, Venus, Mars, Saturn and Jupiter) will be visible in the western sky in the evening after sunset, with the first four being very close to each other. It will be interesting watching them move with respect to each other night by night. It will be a good opportunity for photography. On 10th May, Venus and Mars approach within one-third of a degree.

METEORS

The 4-day old Moon should favour observations of the Perseid meteors on the night of 12/13 August this year. The peak is predicted for the early morning of the 13th.

However, the Leonids, about the 17th November, will be hampered by the almost full Moon. The Geminids (14th December) will also be affected by the Moon.

COMETS AND ASTEROIDS

Several faint comets and asteroids should be visible, as in most years. Comet Linear 2000 WM1 should reappear in the northern hemisphere in April and May.

ECLIPSES

No eclipses are visible from Guernsey this year, apart from a penumbral lunar eclipse On 24th June at 10:20 pm, just after moonrise. On the 11th June there is an annular solar eclipse (visible from the Pacific). And a total solar eclipse on 4th December will be visible from Africa and Australia.

WEA COURSE

The Astronomy Section is running a 6-week "Star Gazing" course at the Observatory from the end of January for the Workers Education Association.

© David Le Conte
La Société Guernesiaise Astronomy Section
Belle Etoile
Rue du Hamel
Castel
Guernsey
GY5 7QJ
Tel 01481 264847 Fax 01481 264871
Observatory telephone 01481 264252

Island - Causeway opening times

yr 2002 All times BST No responsibility can be accepted for any consequence arising out of the use of these tables

Opens	Closes	June	Opens	Closes	July	Opens	Closes	August	Opens	Closes	Sept.	Opens	Closes
15:25	17:30	1	CLOSED		1	CLOSED		1	CLOSED		1	CLOSED	
CLOSED		2	CLOSED		2	CLOSED		2	CLOSED		2	CLOSED	
CLOSED		3	CLOSED		3	CLOSED		3	CLOSED		3	CLOSED	
CLOSED		4	CLOSED		4	CLOSED		4	CLOSED		4	CLOSED	
CLOSED		5	CLOSED		5	CLOSED		5	CLOSED		5	11:25	12:45
CLOSED		6	CLOSED		6	CLOSED		6	CLOSED		6	11:35	14:10
CLOSED		7	CLOSED		7	CLOSED		7	11:40	13:00	7	12:00	15:20
CLOSED		8	11:10	12:20	8	11:25	12:20	8	12:05	14:20	8	12:30	16:20
11:10	12:35	9	11:30	13:20	9	11:50	13:25	9	12:25	15:30	9	13:05	17:10
11:25	13:30	10	12:00	14:10	10	12:20	14:30	10	13:00	16:25	10	13:55	17:45
11:45	14:20	11	12:30	15:00	11	12:50	15:30	11	13:40	17:10	11	14:50	18:10
12:10	15:00	12	13:10	15:35	12	13:30	16:15	12	14:30	17:50	12	16:00	18:20
12:45	15:35	13	13:55	16:10	13	14:15	17:00	13	15:20	18:35	13	CLOSED	
13:25	16:00	14	14:40	16:45	14	15:05	17:40	14	16:30	18:40	14	CLOSED	
14:05	16:25	15	15:40	17:15	15	16:05	18:15	15	17:55	18:50	15	CLOSED	
15:05	16:35	16	16:50	17:45	16	17:10	18:45	16	CLOSED		16	CLOSED	
CLOSED		17	CLOSED		17	CLOSED		17	CLOSED		17	CLOSED	
CLOSED		18	CLOSED		18	CLOSED		18	CLOSED		18	CLOSED	
CLOSED		19	CLOSED		19	CLOSED		19	CLOSED		19	12:00	12:50
CLOSED		20	08:50	09:50	20	CLOSED		20	CLOSED		20	12:05	14:00
CLOSED		21	09:40	11:05	21	CLOSED		21	12:10	13:15	21	12:30	14:50
09:25	10:25	22	10:20	12:20	22	11:35	12:30	22	12:30	14:20	22	12:55	15:25
09:45	12:00	23	11:05	13:25	23	12:05	13:35	23	12:55	15:05	23	13:20	16:00
10:20	13:10	24	11:50	14:15	24	12:40	14:35	24	13:25	15:45	24	13:55	16:20
10:55	14:20	25	12:30	15:05	25	13:10	15:25	25	13:55	16:20	25	14:35	16:30
11:40	15:05	26	13:20	15:45	26	13:50	16:05	26	14:30	16:45	26	15:20	16:40
12:25	15:50	27	14:05	16:20	27	14:30	16:35	27	15:15	16:55	27	CLOSED	
13:20	16:30	28	15:00	16:40	28	15:15	16:55	28	16:05	16:55	28	CLOSED	
14:10	16:45	29	16:05	16:55	29	16:00	17:10	29	CLOSED		29	CLOSED	
15:15	17:00	30	CLOSED		30	CLOSED		30	CLOSED		30	CLOSED	
CLOSED					31	CLOSED		31	CLOSED				

DANGER: Causeway closing times can vary by up to 20 minutes due to weather conditions.
Please be aware of the rapidly rising tide,
and do not attempt to cross the causeway if it is submerged at any point.

2002 Official Guernsey Ormering tides

		HW am	HW height	HW pm	HW height	LW am	LW height	LW pm	LW height
January	01 Tue	07:39	9.3	20:08	9.1	01:41	1.4	14:10	1.2
	13 Sun	06:19	8.7	18:43	8.5	00:24	2.1	12:49	1.9
	14 Mon	07:00	8.9	19:23	8.6	01:06	2.0	13:30	1.8
	15 Tue	07:38	8.9	20:00	8.5	01:43	1.9	14:06	1.7
	28 Mon	05:56	8.8	18:27	8.8			12:26	1.6
	29 Tue	06:44	9.3	19:15	9.2	00:45	1.5	13:16	1.1
	30 Wed	07:31	9.6	20:00	9.4	01:34	1.1	14:03	0.7
February	12 Tue	06:46	8.7	19:08	8.6	00:53	2.0	13:15	1.7
	13 Wed	07:22	8.9	19:43	8.7	01:28	1.8	13:49	1.5
	14 Thu	07:55	9.0	20:14	8.7	02:00	1.7	14:20	1.5
	27 Wed	06:31	9.5	19:01	9.5	00:33	1.2	13:03	0.7
	28 Thu	07:18	10.0	19:45	9.8	01:21	0.6	13:49	0.2
March	01 Fri	08:01	10.2	20:27	9.9	02:05	0.3	14:31	0.1
	14 Thu	06:59	9.0	19:18	8.9	01:06	1.6	13:25	1.4
	15 Fri	07:32	9.1	19:49	8.9	01:36	1.5	13:54	1.3
	16 Sat	08:01	9.0	20:17	8.8	02:03	1.4	14:21	1.4
	28 Thu	06:12	9.6	18:40	9.7	00:14	1.0	12:42	0.5
	29 Fri	06:57	10.1	19:23	10.0	01:01	0.5	13:27	0.1
	30 Sat	07:40	10.2	20:03	10.1	01:45	0.1	14:08	0.0
April	12 Fri	06:30	8.8	18:48	8.9	00:34	1.7	12:52	1.4
	13 Sat	07:03	9.0	19:19	9.0	01:05	1.5	13:22	1.3
	14 Sun	07:33	9.0	19:47	8.9	01:34	1.4	13:51	1.3
	27 Sat	06:32	9.8	18:57	9.9	00:36	0.6	13:01	0.4
	28 Sun	07:16	9.9	19:38	9.9	01:20	0.4	13:43	0.4
	29 Mon	07:57	9.8	20:17	9.7	02:02	0.4	14:23	0.6

Times are given in GMT and heights are in metres above chart datum.

High pressure will depress tide levels whereas Low pressure will raise tide levels.

Onshore winds will raise local tide levels whereas offshore winds will depress local tide levels.